

**\$1995<sup>00</sup>**

ADVERTISED DELIVERED PRICE  
Transportation, optional equipment,  
state and local taxes are extra



PONTIAC-JEEPS  
MORRISON MOTORS, INC.

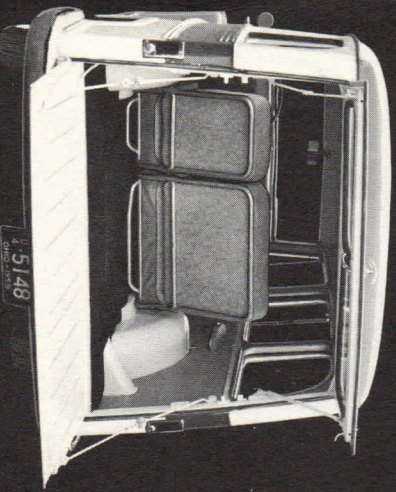
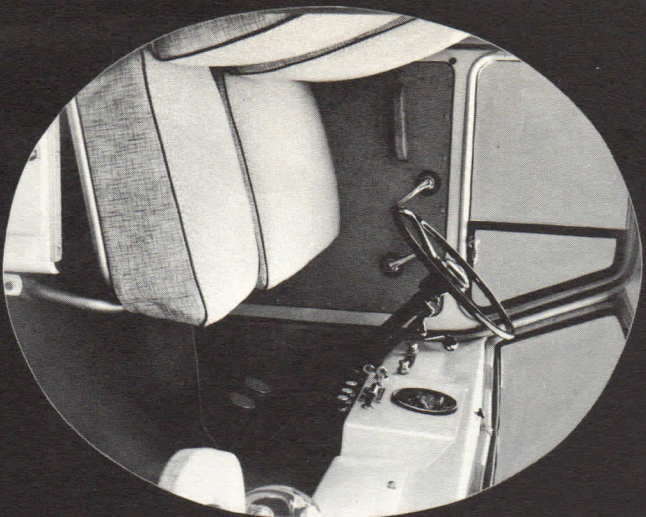
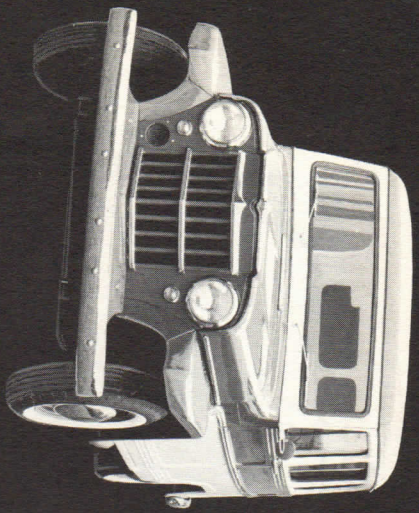
OLEAN RD. YORKSHIRE, N. Y.  
PHONE ARCADE 476

**A  
"MAVERICK"  
SPECIAL"**

*the new*  
**Jeep<sup>®</sup> Station Wagon**

Meet America's most useful new vehicle—it's a "Maverick Special," the new 'Jeep' Station Wagon! Here is the station wagon with the built-in budget—costs less to buy, less to own and operate, yet has higher resale value. You still get 'Jeep' performance, but at a price no other American-built station wagon can match.

The new 'Jeep' Station Wagon unites functional styling and convenience with rugged utility . . . has a new spring suspension system, spacious interiors combined with comfortable seating. Powered by the world-famous 'Jeep' 4-cylinder F-Head "Hurricane" engine. See reverse side for feature details and specifications.



# TOP PERFORMANCE AT LOWEST COST

Here's America's lowest priced station wagon. Only \$1995.00\* puts you in the beautiful new 'Jeep' Station Wagon. Perfect vehicle for business or pleasure, work or play, it features engineering and design advancements you would expect only in a more costly vehicle.

Here is a rugged new spring suspension for extra stamina and comfort, a wide 47 $\frac{3}{8}$  in. 1-piece windshield, attractive new interior carpeting and fabrics, and new exterior trim. In addition, you get Goodyear "Captive-Air" white sidewall tires and your choice of 8 two-tone color options as *standard equipment*—no extra cost!

To save you even more money, the world-famous 'Jeep' 4-cylinder "Hurricane" engine squeezes every ounce of power from your regular grade gasoline. Its unique F-Head design means longer, more maintenance-free engine life. The sturdy five-crossmember frame adds years of service to the chassis. Functional design of high clearance fenders eliminates many costly repair bills. And there is no need for costly "power" mechanisms. Cam and lever steering plus low center of gravity give stability, ease of handling and great maneuverability.

But, the 'Jeep' Station Wagon is no "stripped-down" model. On the inside you'll find the comfortable contour seats covered with a new vinyl coated fabric. This material has the strength and washability of vinyl plus the cooling, air-spaced "breathable" qualities of finest fabric. In addition, black Pompano carpeting lines the entire rear compartment.

You get all this and big station wagon capacity, too! Rides six adult passengers or a  $\frac{1}{2}$  ton of cargo. Loading is simple because the tailgate is flush with the floor and can carry the full weight of this payload.

See your 'Jeep' dealer soon and test drive the new 'Jeep' Station Wagon. You'll discover why Willys Motors consistently leads the field with vehicles of lasting value and economy.

\*Advertised Delivered Price, exclusive of transportation, state and local taxes and optional equipment.

**WILLYS MOTORS, INC.  
WILLYS-OVERLAND EXPORT CORP.  
TOLEDO 1, OHIO**

## SPECIFICATIONS

### OF THE 'Jeep' STATION WAGON

(Specifications subject to change without notice)

G. V. W.	4500 lbs.
Tread, Front & Rear	57 in.
Overall Width	71 $\frac{3}{8}$ in.
Wheelbase	104 $\frac{1}{2}$ in.
Overall Length	176 $\frac{1}{2}$ in.
Overall Height	70 $\frac{1}{2}$ in.
AXLES—Front: Reverse Elliptor "I" Beam. Rear: Semi-floating type with hypoid gears. Ratio: 4.89:1	
BRAKES—Service: Bendix Hydraulic, 11 in. x 2 in. drum; area: 176 $\frac{1}{2}$ sq. in.	
CLUTCH—Single plate, frictional area 72 sq. in.	
COOLING—Radiator capacity 11 qts. Radiator cap 7 lbs. pressure.	
ELECTRICAL—Battery: 50 amp. hour, 12 volt.	
ENGINE—"Hurricane", 4-cylinder F-Head, 2-in. intake valves in head, exhaust valves in block. Bore and stroke, 3 $\frac{1}{8}$ in. x 4 $\frac{3}{8}$ in. 114 lbs. ft. torque at 2000 R.P.M. Displacement, 134.2 cu. in. Max. H.P., 75 at 4000 R.P.M. Taxable H.P., 15.63. Compression ratio: 7.4:1.	
FRAME—Side members 1-piece pressed steel channels, five crossmembers.	
FUEL TANK—Capacity 15 gal. Fuel line $\frac{1}{4}$ in. Fuel filter in fuel tank. Safety vented cap.	
SHOCK ABSORBERS—Direct-acting, 2-way hydraulic control.	
SUSPENSION—Springs, front and rear semi-elliptical leaf type. Stabilizer bar standard front.	
STEERING—Cam and lever, overall ratio 26:1.	
TIRES—Goodyear "Captive-Air" white sidewall 6:70 x 15, 4-ply.	
TRANSMISSION—3 speed Synchromesh. Ratios: 1st, 2.605:1; 2nd, 1.630:1; 3rd, 1.000:1; Reverse, 3.536:1.	
OVERDRIVE—Extra cost option.	
WEIGHT, CURB—2993 lbs.	