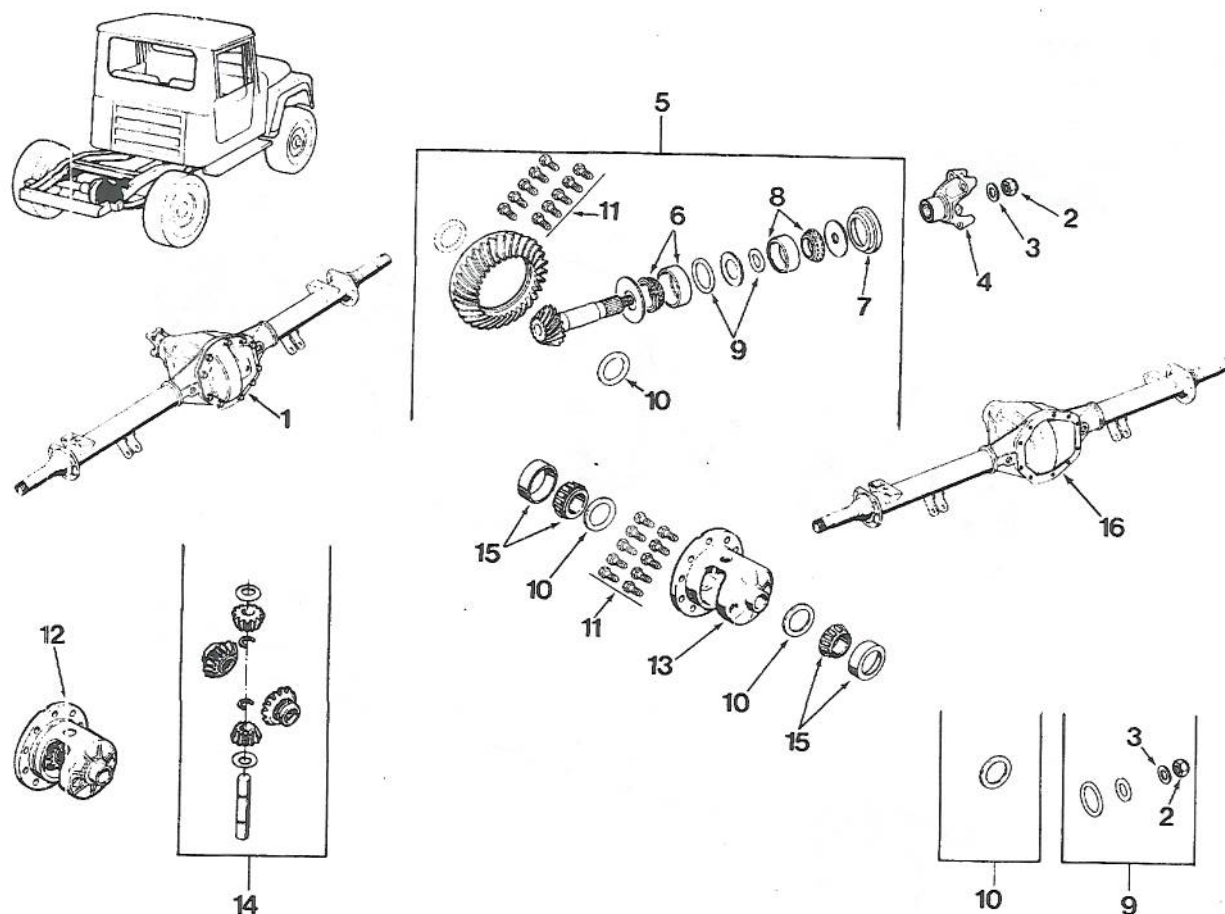


09909B

FIGURE 128. REAR AXLE SHAFTS GROUP

FIG. & INDEX NO.	PART NUMBER	FSCM	1234567	DESCRIPTION	UNITS USABLE PER ASSY.	ON CODE	SMR CODE
128-	NO NUMBER	92871		REAR AXLE SHAFTS GROUP	REF		
				(SEE FIGURE 2 FOR NHA)			
-1	36113 25	97271		. SHAFT, AXLE, RIGHT (8983501512)	1		XBFZZ
	36113 24	97271		. SHAFT, AXLE, LEFT (8983501513)	1		XBFZZ
-2	Q9419076	92871		. BOLT, HEX HEAD, SPECIAL	8		XBFZZ
				(9419076) (AP)			
-3	MS35338-47	96906		. WASHER, LOCK (AP)	8		XA
-4	B992000106	92871		. GASKET, AXLE TO HUB	1		XBFZZ
-5	D5UA-4A406-AA	23040		. WEDGE, LOCKING, REAR AXLE	1		PAFZZN
				(8992000096)			
-6	386017	23040		. NUT, HEX, LOCK (8992000095)	1		XBFZZ
-7	5357401	92871		. BEARING ASSEMBLY, CONE AND	1		PAFZZN
				ROLLER			
-8	14-14403-052	72540		. HUB AND DRUM ASSEMBLY, REAR.	2		XBFZZ
				(8992000081)			
-9	LM104911	60038		. . CUP, BEARING, OUTER, REAR WHEEL	2		PAFZZN
				(8983501506)			
-10	382A	60038		. . CUP, BEARING, INNER, REAR WHEEL	2		PAFZZN
				(8983501507)			
-11	09-001438	72540		. . STUD, MOUNTING, REAR WHEEL	8		XBFZZ
				(8983501480)			
-12	B992000098	92871		. BEARING ASSEMBLY, INNER, CONE	2		PAFZZN
				AND ROLLER			
-13	EDTA-1175-AA	23040		. RETAINER ASSEMBLY, GREASE, INNER.	2		PAFZZN
				REAR WHEEL (8992000094)			



099188

FIGURE 129. REAR AXLE ASSEMBLY AND REAR DIFFERENTIAL GROUP

FIG. & INDEX NO.	PART NUMBER	FSCM	1234567	DESCRIPTION	UNITS PER ASSY.	USABLE ON CODE	SMR CODE
129-	NO NUMBER	92871		REAR AXLE ASSEMBLY AND REAR DIFFERENTIAL GROUP (PARTS KIT AVAILABLE) (SEE FIGURE 2 FOR NHA)	REF		
-1	726962X	95019		AXLE ASSEMBLY, REAR, COMPLETE (8983501508)	1		XBFZZ
	NO NUMBER	95019		DIFFERENTIAL ASSEMBLY, REAR	1		XBFZZ
-2	30271	72447		NUT, PINION (919585)	1		XBFZZ
-3	919612	34623		WASHER, PINION NUT (919612)	1		XBFZZ
-4	3801	95019		YOKER ASSEMBLY, END (8134809)	1		XBFZZ
-5	706998 5X	95019		KIT, GEAR AND PINION ASSEMBLY, HYPOID DRIVE (8983501519) (K17)	1		PAFZZN
-6	706861	95019		KIT, BEARING ASSEMBLY, PINION REAR (8983501518) (K18)	1		XBFZZ
	HMB03110	60038		CUP, BEARING (NOT SERVICED SEPARATELY) (K18)	1		XBFZZ
	565986	95019		CONE, BEARING (NOT SERVICED SEPARATELY) (K18)	1		XBFZZ
-7	39439	95019		SEAL, OIL (8983501517)	1		XBFZZ
-8	706045	95019		KIT, BEARING ASSEMBLY, PINION FRONT (8124027) (K19)	1		XBFZZ
	HMB8510	60038		CUP, BEARING (NOT SERVICED SEPARATELY) (K19)	1		XBFZZ

FIG. & INDEX NO.	PART NUMBER	FSCM	1234567	DESCRIPTION	UNITS PER ASSY.	USABLE ON CODE	SMR CODE
129-	HM88542	60038	CONE, BEARING (NOT SERVICED SEPARATELY) (K19)	1		XBFZZ
-9	706603	95019	...	KIT, SHIM, ADJUSTING, PINION AND BEARING (8983501536) (K20)	1		XBFZZ
-10	706604	95019	...	KIT, DIFFERENTIAL ADJUSTING. SHIM (8983501570) (K21)	AR		XBFZZ
-11	30266	72447	...	SCREW, CAP, HEX HEAD (919586)	12		XBFZZ
-12	706609	95019	...	KIT, DIFFERENTIAL CASE (8983501520) (K24)	1		XBFZZ
-13	26308	95019	...	CASE, DIFFERENTIAL (NOT SERVICED SEPARATELY)	1		XBFZZ
-14	706602	95019	...	KIT, DIFFERENTIAL CASE INNER PARTS (8983501521) (K23)	1		PAFZZN
-15	8124028	92871	...	KIT, BEARING ASSEMBLY, SIDE, CARRIER (K22)	2		XBFZZ
	TCAA1244A	23040	CONE, BEARING (NOT SERVICED SEPARATELY) (K22)	1		XBFZZ
	550363	95019	CUP, BEARING (NOT SERVICED, SEPARATELY) (K22)	1		XBFZZ
-16	NO NUMBER	95019	...	HOUSING, REAR AXLE	1		XBFZZ

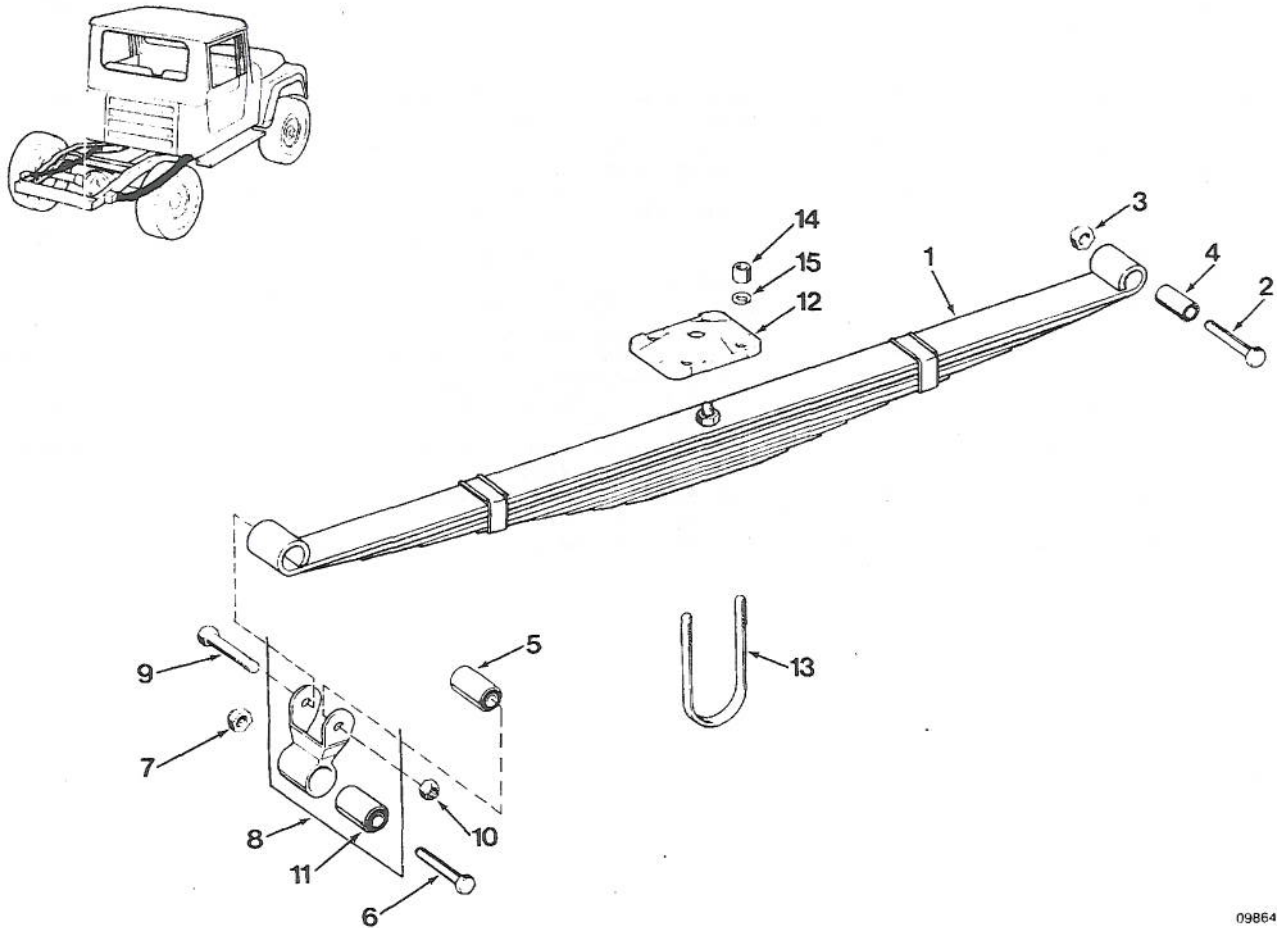


FIGURE 130. REAR SPRING GROUP

FIG & INDEX NO.	PART NUMBER	FSCM	1234567	DESCRIPTION	UNITS PER ASSY.	USABLE ON CODE	SMR CODE
130--	NO NUMBER	92871		REAR SPRING GROUP.		REF	
				(SEE FIGURE 2 FOR NHA)			
--1	8992000046	92871		SPRING ASSEMBLY, REAR.	2		XBFZZ
--2	4004120	92871		SCREW, CAP, HEX HD (AP)	2		XBFZZ
--3	4005198	92871		NUT, SELF-LOCKING, HEX (AP)	2		XBFZZ
--4	944870	92871		BUSHING, SPRING, FRONT.	2		XBFZZ
--5	5355369	92871		BUSHING, SPRING, REAR	2		XBFZZ
--6	4004120	92871		SCREW, CAP, HEX HD.	2		XBFZZ
--7	4005198	92871		NUT, SELF-LOCKING, HEX.	2		XBFZZ
--8	5352863	92871		SHACKLE ASSEMBLY, SPRING FRONT	2		XBFZZ
--9	4004120	92871		SCREW, CAP, HEX HD (AP)	2		XBFZZ
--10	4005198	92871		NUT, SELF-LOCKING, HEX (AP)	2		XBFZZ
--11	5352079	92871		BUSHING, SPRING	2		XBFZZ
--12	5352084	92871		PLATE, SPRING CLIP	2		XBFZZ
--13	8992000125	92871		CLIP, SPRING (AP).	4		XBFZZ
--14	69420350	92871		NUT, PLAIN, HEX (9420350) (AP).	8		XBFZZ
--15	4004806	92871		WASHER, LOCK (AP).	8		XBFZZ

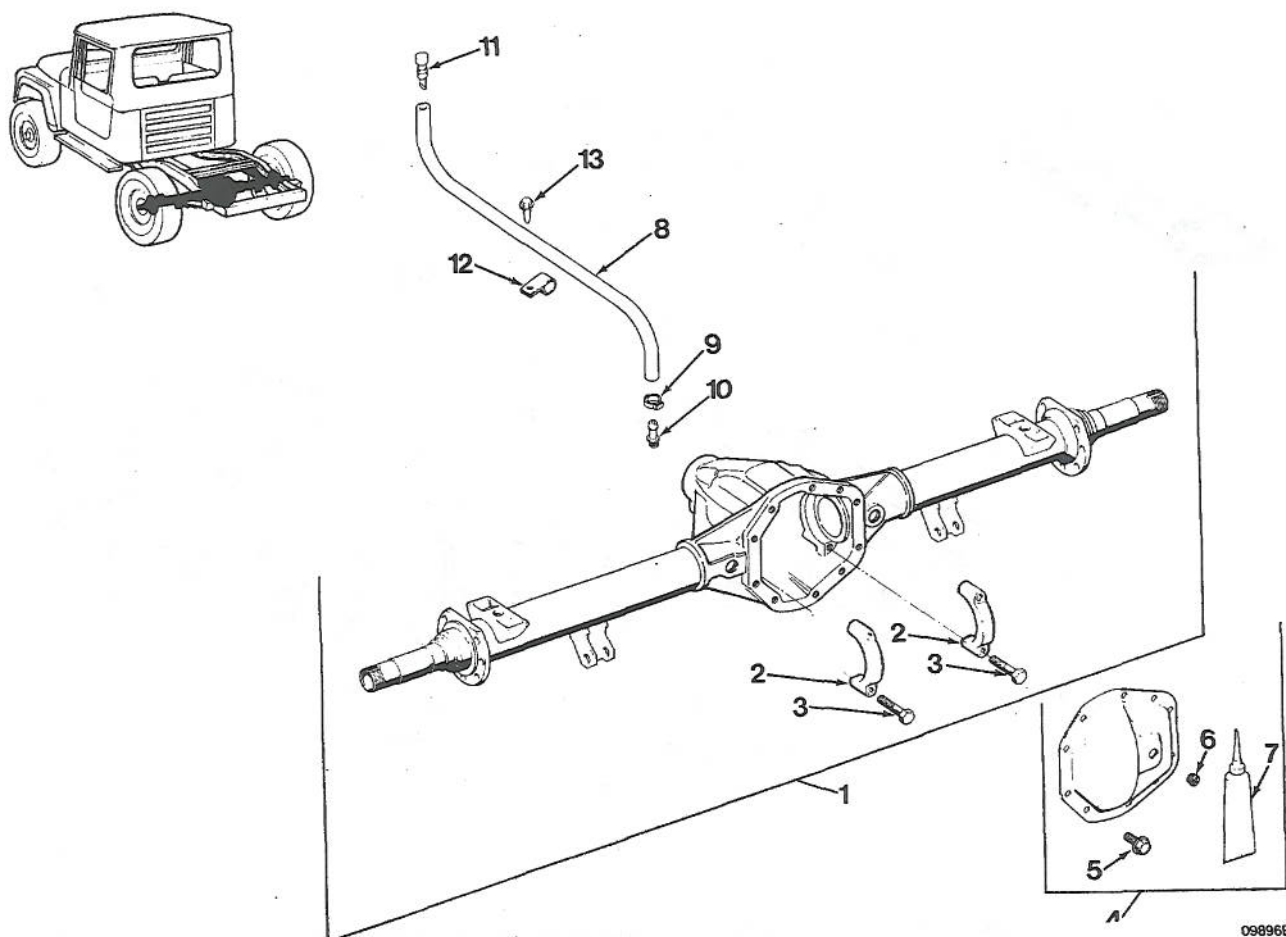
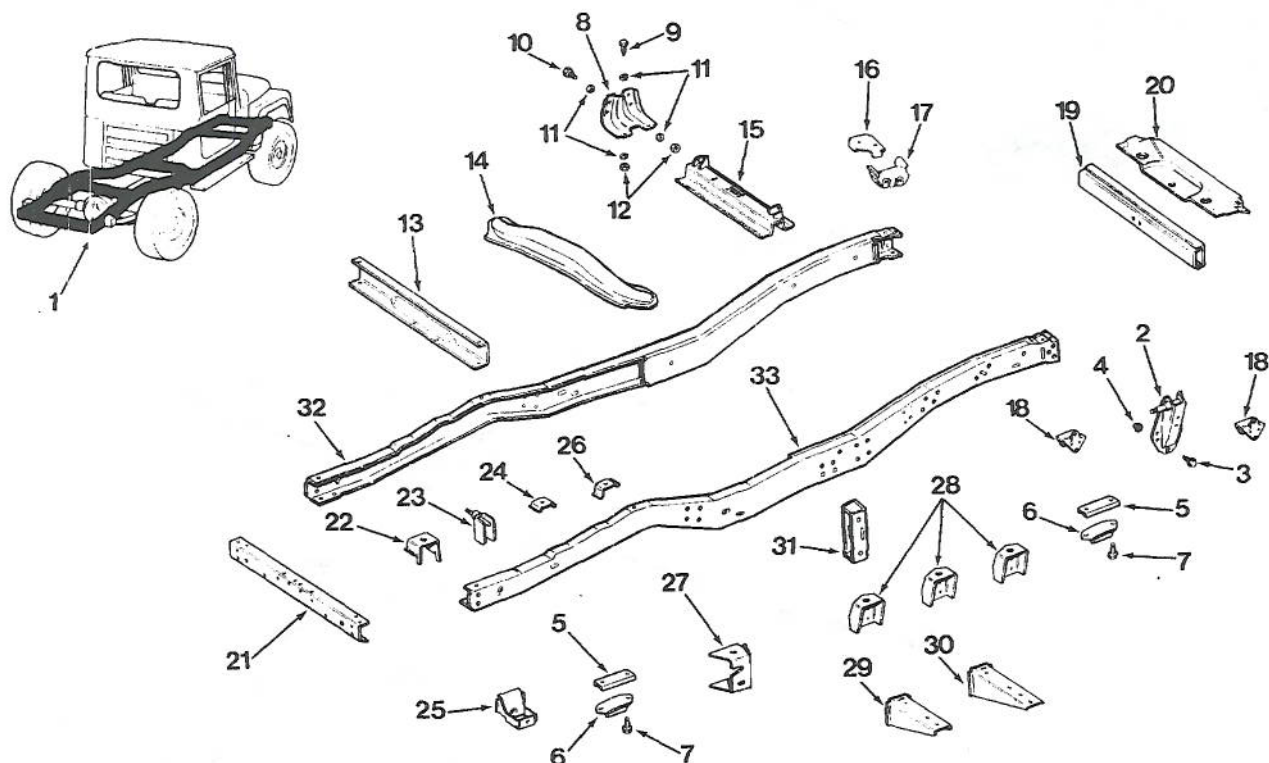


FIGURE 131. REAR AXLE HOUSING GROUP

FIG. & INDEX NO.	PART NUMBER	FSCM	1234567	DESCRIPTION	UNITS PER ASSY.	USABLE ON CODE	SMR CODE
131-	NO NUMBER	92871		REAR AXLE HOUSING GROUP.	REF		
				(SEE FIGURE 2 FOR NHA)			
-1	72684	97271		HOUSING, REAR AXLE (8983501514).	1		XBFZZ
-2	NO NUMBER	97271		CAP, CARRIER (NOT SERVICED.	2		XBFZZ
				SEPARATELY)			
-3	8983501515	92871		SCREW, CAP, HEX HEAD (AP).	4		XBFZZ
-4	29948	97271		COVER ASSEMBLY, CARRIER.	1		XBFZZ
				(8983501516)			
-5	650072	11862		SCREW, FLANGE HEAD (991106).	10		XBFZZ
				(AP)			
-6	36472	72447		PLUG, COVER (8983501571).	1		XBFZZ
-7	4269149	86403		SEALANT (8993317).	1		XA
-8	8125823	92871		HOSE, VENT.	1		XBFZZ
-9	3227851	92871		CLAMP, VENT HOSE (AP).	1		XBFZZ
-10	5353494	92871		FITTING, VENT HOSE.	1		XBFZZ
-11	5352955	92871		CAP ASSEMBLY, VENT.	1		XBFZZ
-12	6120526	92871		CLIP, CLOSED (120526).	1		XBFZZ
-13	69426241	92871		SCREW, CAP, HEX WSHR (9426241).	1		PAFZZN
				(AP)			



098808

FIGURE 132. FRAME ASSEMBLY AND FRAME COMPONENTS GROUP

FIG. & INDEX NO.	PART NUMBER	FSCM	1234567	DESCRIPTION	UNITS PER ASSY.	USABLE ON CODE	SMR CODE
132-	NO NUMBER	92871		FRAME ASSEMBLY AND FRAME COMPONENTS GROUP (SEE FIGURE 2 FOR NHA)	REF		
-1	8992000038	92871		FRAME ASSEMBLY, COMPLETE	1		XBFZZ
-2	5358051	92871		BRACKET ASSEMBLY, FRONT SHOCK ABSORBER, LEFT HAND	1		XBFZZ
	5358052	92871		BRACKET ASSEMBLY, FRONT SHOCK ABSORBER, RIGHT HAND	1		XBFZZ
-3	4005665	92871		SCREW, MACHINE (AP)	2		PAFZZN
	69421204	92871		SCREW, CAP, HEX HD (9421204) (AP)	4		XBFZZ
-4	4003909	92871		NUT, PLAIN, HEX (AP)	6		PAFZZN
-5	5361023	92871		SPACER, AXLE BUMPER	2		XBFZZ
-6	5355483	92871		BUMPER ASSEMBLY, AXLE	4		XBFZZ
-7	4005063	92871		SCREW, MACHINE (AP)	6		XBFZZ
	4003060	92871		SCREW, MACHINE (AP)	2		XBFZZ
	69424757	92871		SCREW, MACHINE (9424757) (AP)	2		XBFZZ
-8	5994017	92871		BRACKET, SUPPORT, TRANSMISSION CROSSMEMBER	2		XBFZZ
-9	4006863	92871		SCREW, MACHINE (AP)	14		XBFZZ
-10	4006864	92871		SCREW, MACHINE (AP)	8		XBFZZ
-11	62436163	92871		WASHER, FLAT (2436163) (AP)	24		XBFZZ
-12	69416532	92871		NUT, PLAIN, HEX (9416532) (AP)	12		XBFZZ
-13	5994061	92871		CROSSMEMBER ASSEMBLY, INTERMEDIATE	1		XBFZZ
-14	8992000077	92871		CROSSMEMBER ASSEMBLY, INTERMEDIATE	1		XBFZZ

FIG. & INDEX NO.	PART NUMBER	CAGE	1234567	DESCRIPTION	UNITS PER ASSY.	USABLE ON CODE	SMR CODE
132-15	5994431	92871	..	CROSSMEMBER ASSEMBLY,	1		XBFZZ
				TRANSMISSION SUPPORT			
-16	5994446	92871	..	BUSSET, STEERING GEAR MOUNTING. . .	1		XBFZZ
				BRACKET			
-17	5994444	92871	..	BRACKET, STEERING GEAR MOUNTING . .	1		XBFZZ
				LEFT HAND			
-18	8129561	92871	..	BRACKET, FRONT SPRING	4		XBFZZ
-19	5994600	92871	..	CROSSMEMBER ASSEMBLY, FRONT	1		XBFZZ
-20	5568070	92871	..	PANEL, MOUNTING, FRONT BODY.	1		XBFZZ
				RADIATOR			
-21	5994032	92871	..	CROSSMEMBER ASSEMBLY, REAR.	1		XBFZZ
-22	5568068	92871	..	BRACKET, PICKUP BOX MOUNTING,	1		XBFZZ
				RIGHT HAND			
	5568069	92871	..	BRACKET, PICKUP BOX MOUNTING,	1		XBFZZ
				LEFT HAND			
-23	8126859	92871	..	BRACKET AND SHAFT ASSEMBLY,	2		XBFZZ
				RIGHT REAR SHOCK			
-24	5568064	92871	..	BRACKET, PICKUP BOX SUPPORT,	2		XBFZZ
				REAR			
-25	8126861	92871	..	BRACKET, REAR SPRING.	2		XBFZZ
-26	5568065	92871	..	BRACKET, PICKUP BOX SUPPORT,	2		XBFZZ
				FRONT			
-27	8992000044	92871	..	BRACKET, REAR SPRING PIVOT.	2		XBFZZ
-28	5568062	92871	..	BRACKET, BODY MOUNT	6		XBFZZ
-29	5994140	92871	..	BRACKET, RUNNING BOARD MOUNTING . .	2		XBFZZ
				REAR			
-30	5994139	92871	..	BRACKET, RUNNING BOARD MOUNTING . .	2		XBFZZ
				FRONT			
-31	8992000039	92871	..	REINFORCEMENT ASSEMBLY, FRAME	2		XBFZZ
-32	8992000033	92871	..	SIDEMEMBER, FRAME, LEFT SIDE	1		XBFZZ
				(NOT SERVICED SEPARATELY)			
-33	8992000034	92871	..	SIDEMEMBER, FRAME, RIGHT SIDE.	1		XBFZZ
				(NOT SERVICED SEPARATELY)			

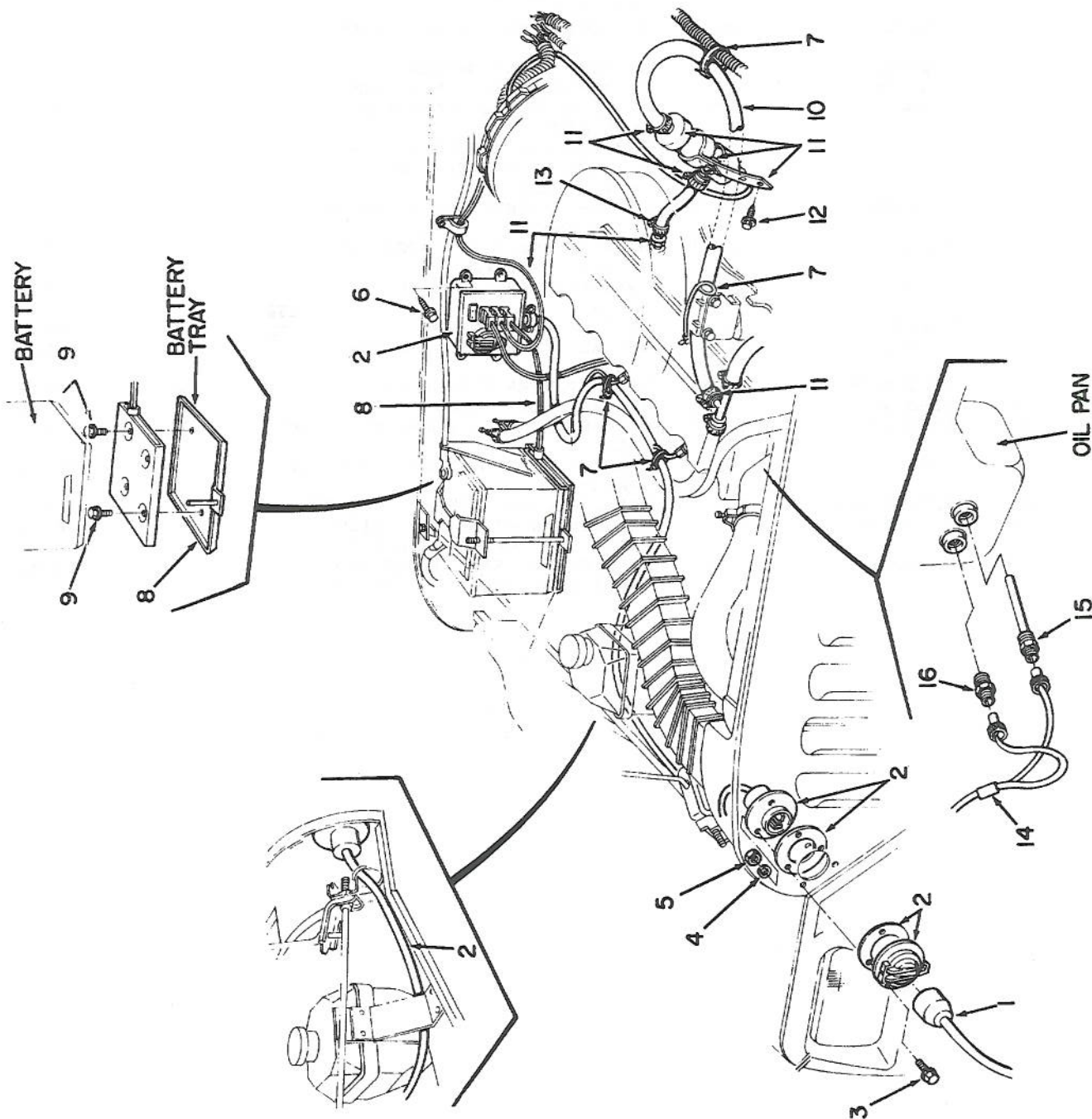
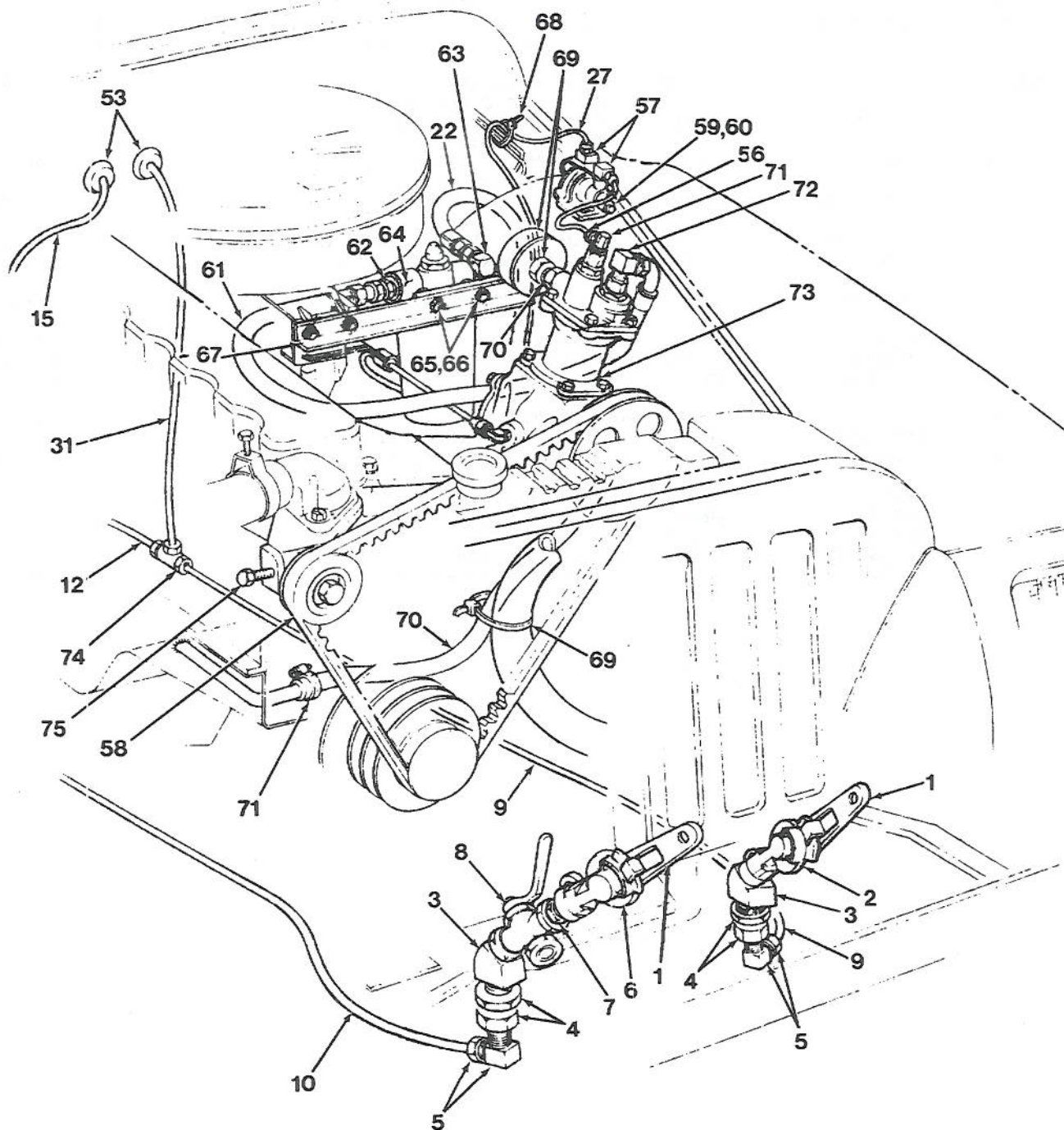


FIGURE 133. WINTERIZATION KIT

14241A

FIG. & INDEX NO.	PART NUMBER	CAGE	1234567	DESCRIPTION	UNITS PER ASSY.	USABLE ON CODE	SMR CODE
133-	0000-008430	31509		KIT, WINTERIZATION.	REF		AFFFF
				(SEE FIGURE 2 FOR NHA)			
-1	8500274	06991		. CABLE ASSEMBLY, 25 FT.	1		PAFZZN
				(0000-008435)			
-2	8500215	06991		. BOX ASSEMBLY, JUNCTION	1		PAFZZN
				(0000-008431)			
-3	MS90725-B	96906		. SCREW, CAP, HEX HD (FA02010398)	3		PAFZZN
				(AP)			
-4	MS35338-44	96906		. WASHER, LOCK (FA11010380) (AP)	3		PAFZZN
-5	MS51967-2	96906		. NUT, PLAIN, HEX (FA12010378)	3		PAFZZN
				(AP)			
-6	9419986	24617		. SCREW, SELF-TAPPING, HEX.	4		PAFZZN
				(00NO-008679) (AP)			
-7	MS3367-1	96906		. STRAP, TIEDOWN	4		PAFZZN
-8	8500320	06991		. WARMER, BATTERY (0000-008433)	1		PAFZZN
-9	9419986	24617		. SCREW, SELF-TAPPING, HEX.	2		PAFZZN
				(00NO-008679) (AP)			
-10	65004	73842		. HOSE, HEATER, 5/8 DIA, 48 IN	1		PAFZZN
-11	850-0045	06991		. HEATER, COOLER (0000-008432)	1		PAFZZN
-12	9419986	24617		. SCREW, SELF-TAPPING, HEX.	2		PAFZZN
				(00NO-008679) (AP)			
-13	MS35842-10	96906		. CLAMP, HOSE (HDO1-008297)	1		PAFZZN
	8500371	06991		. KIT, THERMOSTAT (0000-008434)	1		PAFFFFN
-14	32416502	06991		. . CORD ASSEMBLY.	1		PAFZZN
-15	90616204	06991		. . HEATER, OIL PAN	1		PAFZZN
-16	905029	06991		. . THERMOSTAT ASSEMBLY.	1		PAFZZN



13431A

FIGURE 134. AIR SYSTEM INSTALLATION (SHEET 1 OF 3)

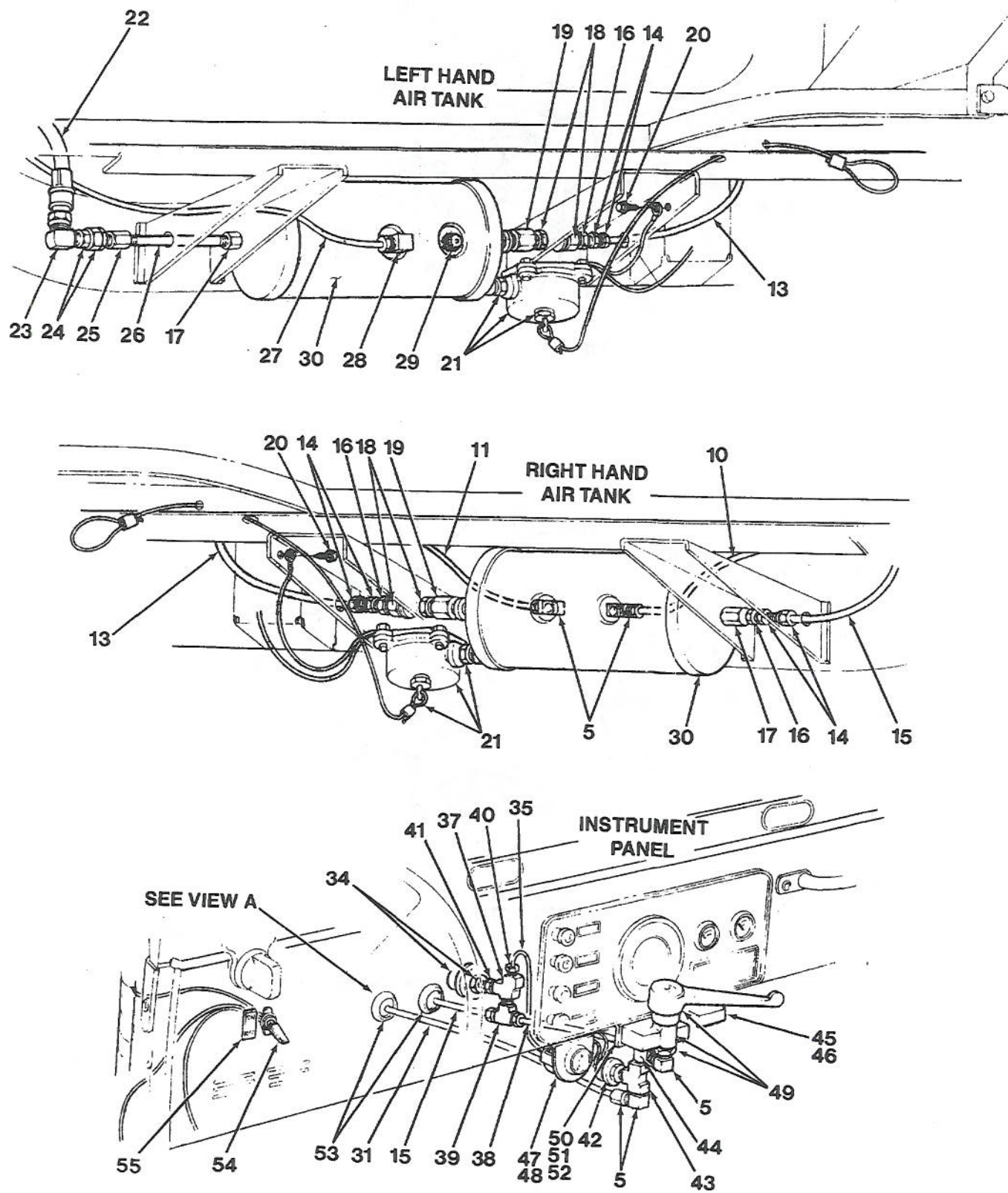
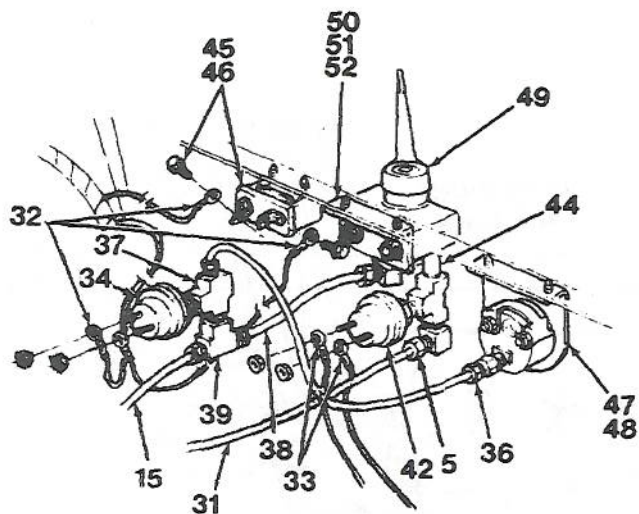
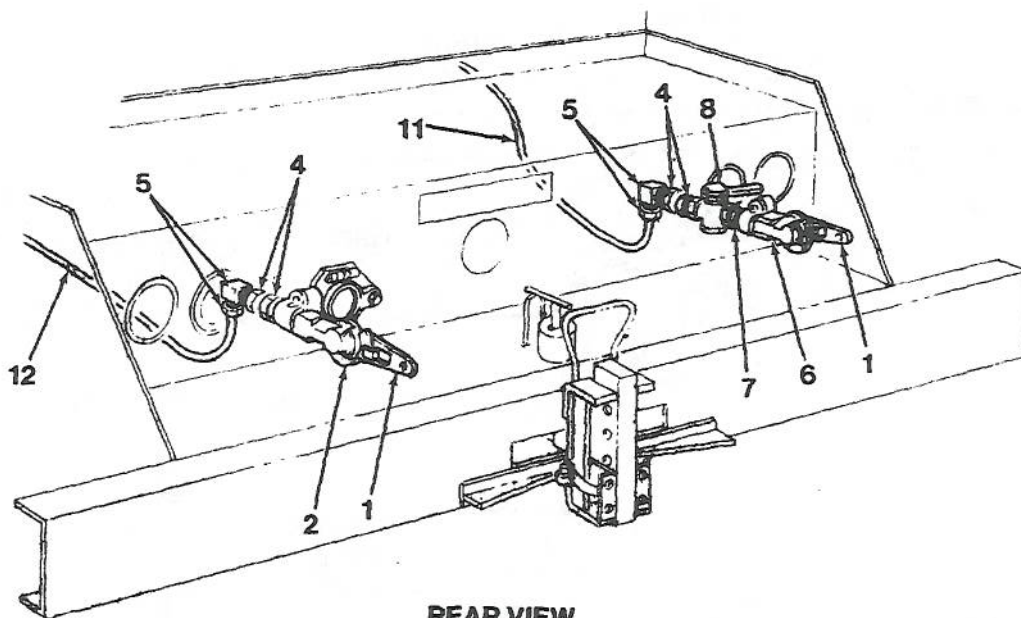


FIGURE 134. AIR SYSTEM INSTALLATION (SHEET 2 OF 3)

13432A



VIEW A



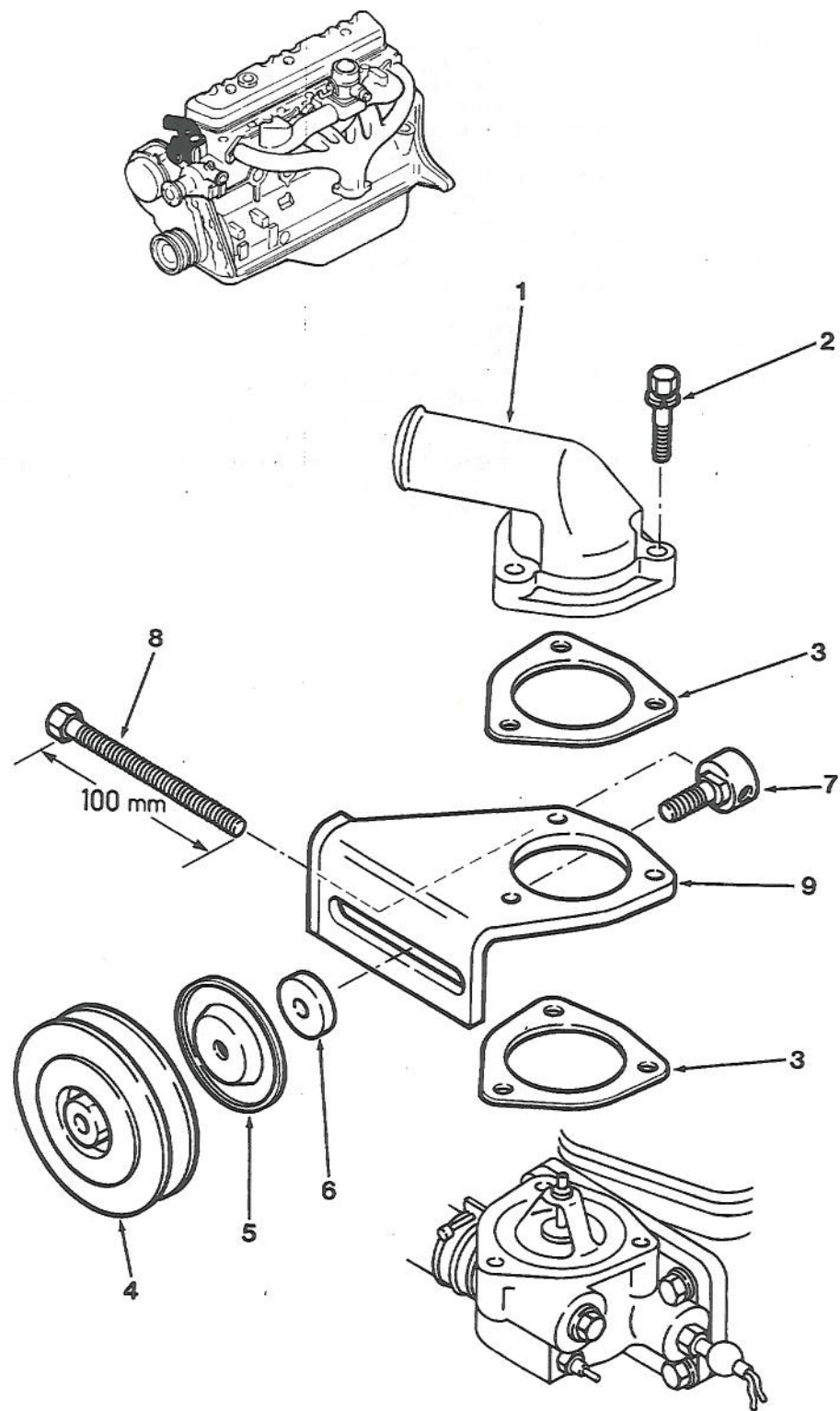
REAR VIEW
OF TRACTOR

13433A

FIGURE 134. AIR SYSTEM INSTALLATION (SHEET 3 OF 3)

FIG. & INDEX NO.	PART NUMBER	CAGE	1234567	DESCRIPTION	UNITS PER ASSY.	USABLE ON CODE	SMR CODE
134-	0000-008442	31509		AIR SYSTEM INSTALLATION.	REF		AF FFF
				(SEE FIGURE 2 FOR NHA)			
-1	90V-2583	79146		. COUPLING, DUMMY (BC10008459)	4		PA FZZN
-2	10452-S	06721		. GLAD HAND, SERVICE (BC10008457)	2		PA FZZN
-3	3350XB	79470		. ELBOW, STREET, 45 DEG	2		PA FZZN
				(BC10008474)			
-4	035079	79146		. STUD, CLAMPING, FRAME	4		PA FZZN
				(BC10008461)			
-5	1469X6	79470		. ELBOW, MALE, 90 DEG (BC10008466)	8		PA FZZN
-6	10451-E	06721		. GLAD HAND, EMERGENCY	2		PA FZZN
				(BC10008458)			
-7	3325XB	79470		. NIPPLE, HEX (BC10008478)	2		PA FZZN
-8	N13553	06721		. VALVE, SHUT-OFF, AIR.	2		PA FZZN
				(BC13008444)			
-9	952002-05B0	31509		. HOSE, NONMETALLIC, 56 IN. (MAKE	1		MFFZZ
				FROM NT10006BK)			
-10	952002-03B0	31509		. HOSE, NONMETALLIC, 69 IN. (MAKE	1		MFFZZ
				FROM NT10006BK)			
-11	952002-02B0	31509		. HOSE, NONMETALLIC, 79 IN. (MAKE	1		MFFZZ
				FROM NT10006BK)			
-12	952002-04B0	31509		. HOSE, NONMETALLIC, 100 IN. (MAKE	1		MFFZZ
				FROM NT10006BK)			
-13	952002-01B0	31509		. HOSE, NONMETALLIC, 80 IN. (MAKE	1		MFFZZ
				FROM NT10006BK)			
-14	1468X6	79470		. CONNECTOR, MALE (BC10008473)	3		PA FZZ
-15	952002-06B0	31509		. HOSE, NONMETALLIC, 55 IN. (MAKE	1		MFFZZ
				FROM NT10006BK)			
-16	3220X6X4	79470		. BUSHING (BC10008475)	3		PA FZZN
-17	C3239X6X6	79470		. ADAPTER (BC10008476)	2		PA FZZN
-18	N11246	06721		. COUPLER, FRAME (BC10008476)	2		PA FZZN
-19	C3209X8X6	79470		. ADAPTER	2		PA FZZN
-20	9615	70655		. SCREW, SELF-TAPPING, HEX.	2		PA FZZN
				(FA22008509)			
-21	12014	06721		. VALVE ASSEMBLY, DRAIN.	2		PA FFFN
				(BC13008448)			
	10027	06721		. KIT, CABLE.	1		PA FZZN
	121560018	06721		. VALVE, DRAIN.	1		PA FZZN
	10047	06721		. COIL, HEATER.	1		PA FZZN
-22	H10408-608-670-32	79470		. HOSE ASSEMBLY (HDO4008505)	1		PA FZZN
-23	C5405XB	79470		. ELBOW, 90 DEG (BC10008471)	1		PA FZZN
-24	KN23010	06721		. VALVE, CHECK (BC13008456)	1		PA FZZN
-25	3300X6	79470		. COUPLING, PIPE (BC10008472)	1		PA FZZN
-26	M851953-61	96906		. PIPE, STEEL, 3/8 X 5 IN.	1		PA FZZN
-27	952001-03B0	31509		. HOSE, NONMETALLIC, 54 IN (MAKE	1		MFFZZ
				FROM NT10004BK)			
-28	1469X4X4	79470		. ELBOW, 90 DEG (BC10008464)	1		PA FZZN
-29	12020	06721		. VALVE, RELIEF (BC13008443)	1		PA FZZN
-30	5000-AD	97109		. TANK ASSEMBLY, AIR (TA01008460)	2		PA FZZN
-31	952002-07B0	31509		. HOSE, NONMETALLIC, 7 IN. (MAKE	1		MFFZZ
				FROM NK10006BK)			
-32	WD08008488	31509		. HARNESS, WIRE, 8 IN.	1		PA FZZN
-33	WD08008487	31509		. HARNESS, WIRE, 15 IN.	1		PA FZZN
-34	13241A	06721		. SWITCH, LOW PRESSURE	1		PA FZZN
				(EB13008446)			
-35	952001-01B0	31509		. HOSE, NONMETALLIC, 10 IN. (MAKE	1		MFFZZ
				FROM NK10004BK)			
-36	1466X4	79470		. CONNECTOR (BC04008510)	1		PA FZZN
-37	3750X4	79470		. TEE, STREET (BC10008467)	1		PA FZZN
-38	952002-07B0	31509		. HOSE, NONMETALLIC, 7 IN. (MAKE	1		MFFZZ
				FROM NK10006BK)			
-39	1477X6	79470		. TEE, BRANCH (BC04008511)	1		PA FZZN
-40	1468X4X4	79470		. CONNECTOR (BC10008469)	1		PA FZZN
-41	3220X4X2	79470		. BUSHING (BC10008468)	1		PA FZZN
-42	3250	06721		. SWITCH, STOP LIGHT (FB13008445)	1		PA FZZN
-43	3700X4	79470		. TEE (BC10008480)	1		PA FZZN
-44	3328X4	79470		. NIPPLE, STREET (BC10008479)	1		PA FZZN
-45	4099	13345		. BUZZER, LOW AIR (013739-00A0)	1		PA FZZN

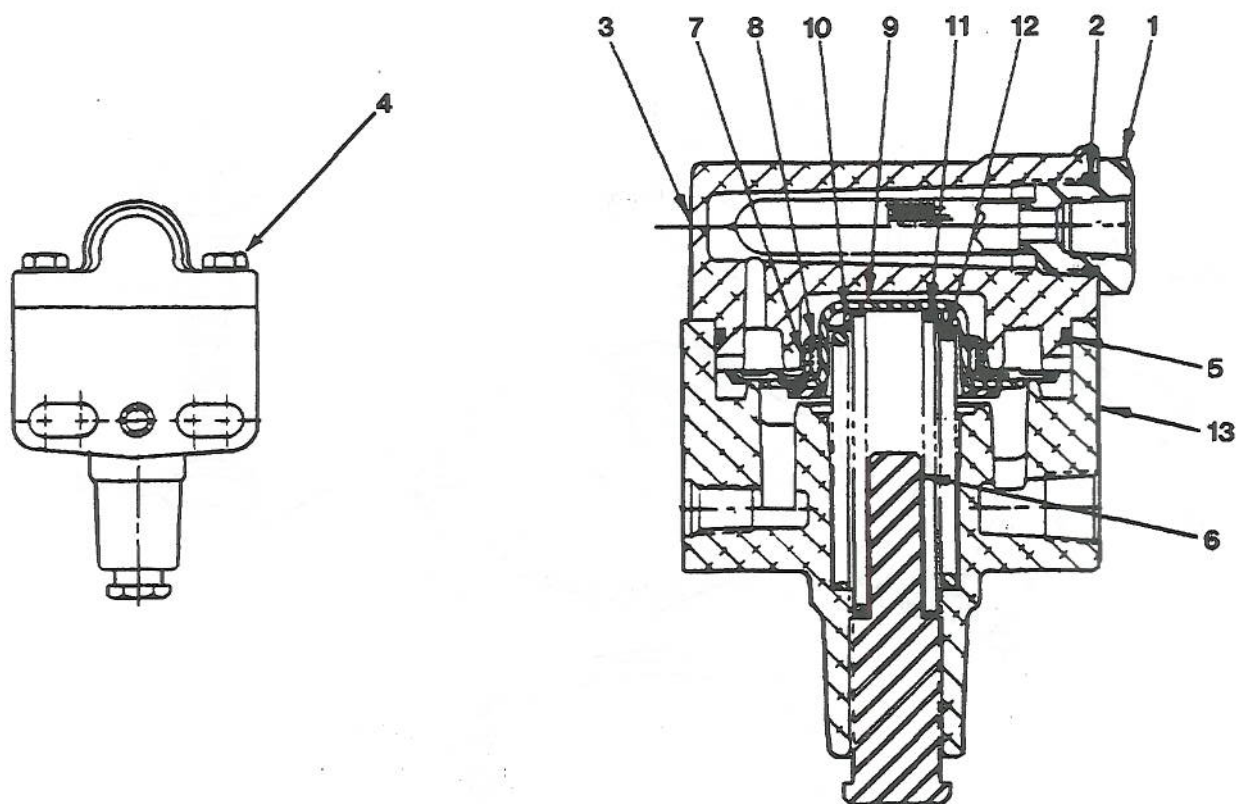
FIG. & INDEX NO.	PART NUMBER	CAGE	1234567	DESCRIPTION	UNITS PER ASSY.	USABLE ON CODE	SMR CODE
134-46	10181	70655		SCREW, MACHINE, PAN HD. (FA21008506) (AP)	2		PAFZZN
-47	82329	57733		GAUGE, AIR PRESSURE. (GA02008452)	1		PAFZZN
-48	2978	70655		SCREW, SELF-TAPPING, HEX. (FA43008508) (AP)	2		PAFZZN
-49	KN20561	06721		VALVE, HAND (BC13008449)	1		PAFZZN
-50	9137	70655		BOLT, HEX HD (FA02006060) (AP)	2		PAFZZN
-51	HA01008454	31509		BRACKET, MOUNTING.	1		PAFZZN
-52	5784	70655		SCREW, SELF-TAPPING, HEX. (FA22008507) (AP)	2		PAFZZN
-53	4423	70655		OROMMET (FA03008489).	2		PAFZZN
-54	5582	13445		SWITCH (EB13008485)	1		PAFZZN
-55	0000008486	31509		PLATE, IDENTIFICATION, ON/OFF	1		PAFZZN
-56	952001-02B0	31509		HOSE, NONMETALLIC, 12 IN. (MAKE FROM NK10004BK)	1		MFFZZ
-57	1469X4	79470		ELBOW, 90 DEG (BC10008465)	2		PAFZZN
-58	NO NUMBER	31509		PULLEY MOUNTING, IDLER (SEE FIGURE 135 FOR DETAILS)	1		
-59	KN-18511	06721		GOVERNOR ASSEMBLY, AIR COMPRESSOR (SEE FIGURE 136 FOR DETAILS)	1		PAFFFN
-60	9615	70655		SCREW, SELF-TAPPING, HEX. (FA22008509) (AP)	2		PAFZZN
-61	H10408-680-680- 39	79470		HOSE ASSEMBLY (HDO4008504).	1		PAFZZN
-62	C5205X8X8	79470		CONNECTOR (BC10008462).	1		PAFZZN
-63	C5405X8X8	79470		ELBOW, 90, DEG (BC10008463)	1		PAFZZN
-65	9137	70655		BOLT, HEX HD (FA02006060) (AP)	2		PAFZZN
-66	9302	70655		NUT, PLAN, HEX (FA06006064) (AP).	2		PAFZZN
-67	HA01008455	31509		BRACKET, MOUNTING.	1		PAFZZN
-68	090014	79146		TIE, NYLON (WD07008490).	15		PAFZZN
-69	KN19010	06721		FILTER ASSEMBLY (C903008450).	1		PAFZZN
	100696A	06721		ELEMENT.	1		PAFZZN
-70	BC10008482	31509		ADAPTER	1		PAFZZN
-71	BC10008484	31509		ADAPTER	1		PAFZZN
-72	BC10008483	31509		ADAPTER	1		PAFZZN
-73	NO NUMBER	31509		AIR COMPRESSOR INSTALLATION (SEE FIGURE 138 FOR NHA)	1		



14231A

FIGURE 135. IDLER PULLEY MOUNTING

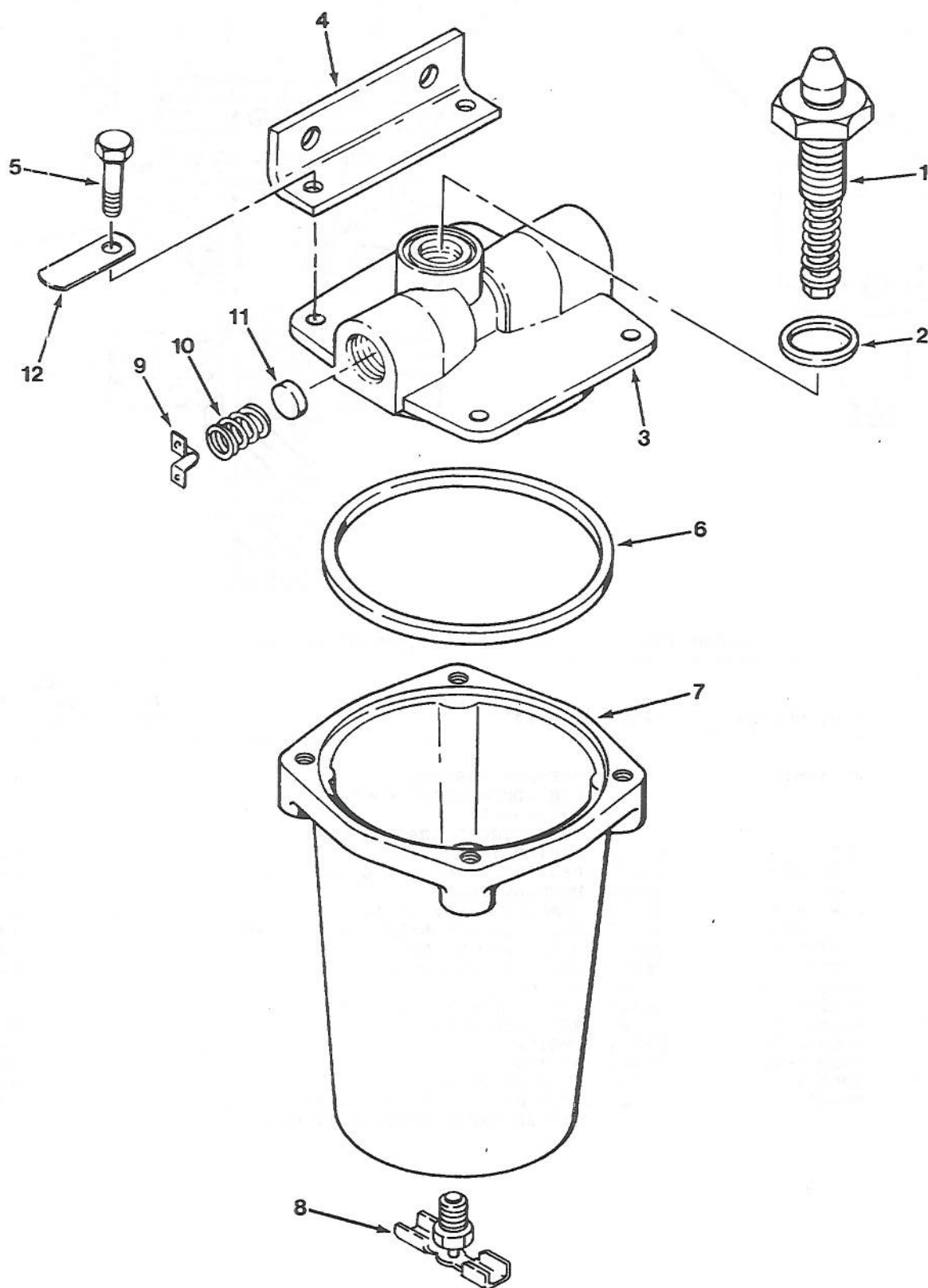
FIG. & INDEX NO.	PART NUMBER	CAGE	1234567	DESCRIPTION	UNITS PER ASSY.	USABLE ON CODE	SMR CODE
135-	NO NUMBER	31509		PULLEY MOUNTING, IDLER (PARTS REF KIT AVAILABLE) (SEE FIGURE 134 FOR NHA)			
-1	11060-C6801	S0356		OUTLET, WATER (8135143).	1		PAFZZN
-2	08110-83062	S0356		SCREW AND WASHER (LESS AIR. COMPRESOR) (8135271) (AP)	3		XBFZZ
	8135116	92871		SCREW AND WASHER (WITH AIR. COMPRESSOR) (AP)	3		XBFZZ
-3	11062-L6000	S0356		GASKET (8135230) (K1) (K2).	1		PAFZZN
	11062-L6000	S0356		GASKET (8135230) (K1) (K2).	2		PAFZZN
-4	8993000077	92871		PULLER, IDLER.	1		PAFZZN
-5	8993000081	92871		SHIELD, DUST, PULLEY.	1		PAFZZN
-6	8993000085	92871		SPACER.	1		PAFZZN
-7	8993000079	92871		BOLT, ADJUSTING, IDLER.	1		PAFZZN
-8	8993000078	92871		BOLT, MOUNTING, IDLER.	1		PAFZZN
-9	8993000074	92871		BRACKET, MOUNTING, IDLER.	1		PAFZZN
	10103-Z9129	S0356		KIT, GASKET, ENGINE (INCLUDES REF PARTS LISTED ABOVE DENOTED BY K1) (K1)			PAFZZN
	10101-Z9128	S0356		KIT, ENGINE, OVERHAUL (INCLUDES REF PARTS LISTED ABOVE DENOTED BY K2) (K2)			PAFZZN



13430A

FIGURE 136. AIR COMPRESSOR GOVERNOR ASSEMBLY

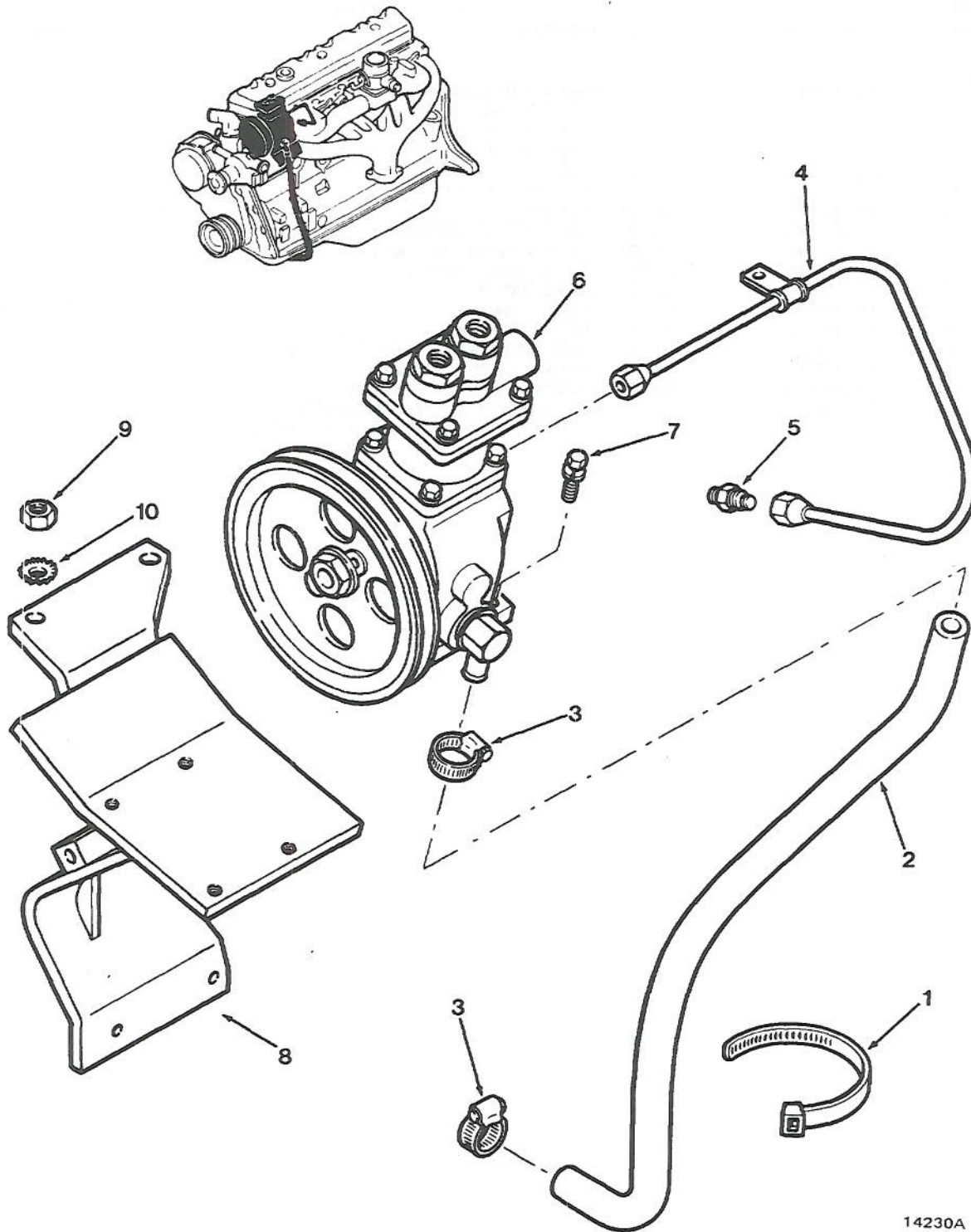
FIG. & INDEX NO.	PART NUMBER	CAGE	1234567	DESCRIPTION	UNITS PER ASSY.	USABLE ON CODE	SMR CODE
136-	KN-18511	06721		GOVERNOR ASSEMBLY, AIR COMPRESSOR (PARTS KIT AVAILABLE) (SEE FIGURE 134 FOR NHA)	REF		PAFFFN
-1	102351	06721		FILTER, INLET (K50).	1		PAFZZN
-2	N-11728-V	06721		PACKING, PREFORMED, O-RING (K50).	1		PAFZZN
-3	300475-A	06721		HOUSING, INLET	1		PAFZZN
-4	24W11614	06721		SCREW, CAP, HEX HD (AP)	4		PAFZZN
-5	N-11728-DW	06721		PACKING, PREFORMED, O-RING (K50).	1		PAFZZN
-6	101929-E	06721		SCREW, ADJUSTING	1		PAFZZN
-7	102350	06721		DIAPHRAGM, VALVE (K50)	1		PAFZZN
-8	600399-TX	06721		SPRING.	1		PAFZZN
-9	102349	06721		CAP ASSEMBLY, VALVE (K50).	1		PAFZZN
-10	600457-C	06721		RETAINER, SPRING	1		PAFZZN
-11	600399-TW	06721		SPRING.	1		PAFZZN
-12	600399-XT	06721		SPRING.	1		PAFZZN
-13	300476-E	06721		HOUSING, OUTLET.	1		XA
	RN-32-P	06721		KIT, REPAIR (CONTAINS PARTS LISTED ABOVE DENOTED BY K50) (K50)	1		PAFZZN



13429A

FIGURE 137. ALCOHOL INJECTOR ASSEMBLY

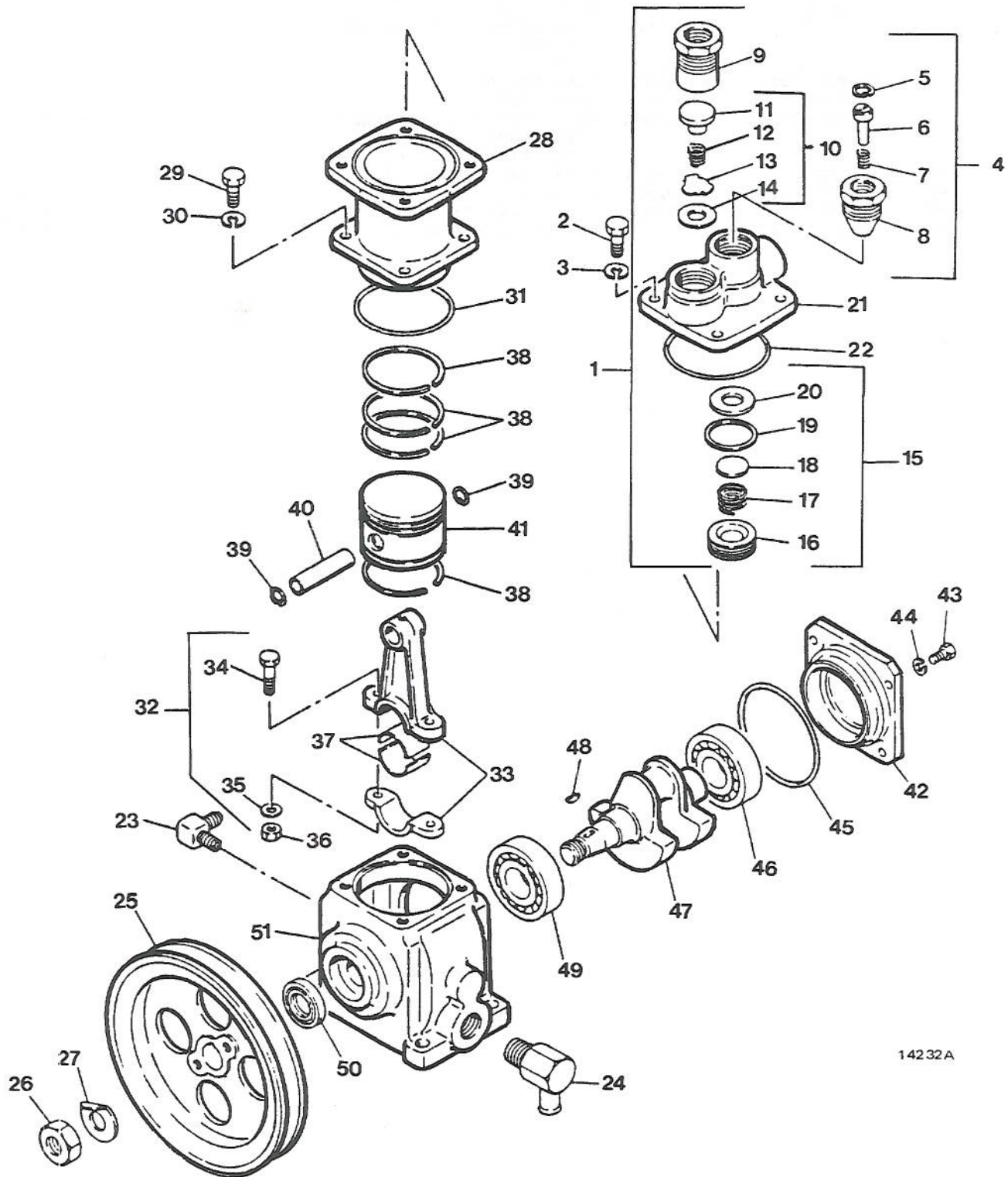
FIG. & INDEX NO.	PART NUMBER	CAGE	1234567	DESCRIPTION	UNITS PER ASSY.	USABLE ON CODE	SMR CODE
137-	AE-72420	06721		INJECTOR ASSEMBLY, ALCOHOL. (PARTS KIT AVAILABLE) (0000008447) (SEE FIGURE 134 FOR NHA)	REF		
-1	AC-75962	06721		. VALVE, SAFETY.	1		PAFZZN
-2	AC-48373	06721		. TETRASEAL (K51)	1		PAFZZN
-3	AE-73494	06721		. COVER	1		PAFZZN
-4	AC-37443	06721		. BRACKET, MOUNTING.	1		PAFZZN
-5	30-X-902	06721		. SCREW, SWAGING (AP).	4		PAFZZN
-6	AC-55710	06721		. TETRASEAL (K51)	1		PAFZZN
-7	AE-55708	06721		. RESERVOIR	1		PAFZZN
-8	AC-42150	06721		. COCK, DRAIN.	1		PAFZZN
-9	AC-55713	06721		. RETAINER (K51).	1		PAFZZN
-10	AC-55714	06721		. SPRING, RETURN (K51)	1		PAFZZN
-11	AC-102507	06721		. VALVE, CHECK (K51)	1		PAFZZN
-12	102241-WA	06721		. PLATE, IDENTIFICATION.	1		PAFZZN
	A-39219	06721		KIT, REPAIR (CONTAINS PARTS. LISTED ABOVE DENOTED BY K51)	1		PAFZZN



14230A

FIGURE 138. AIR COMPRESSOR INSTALLATION

FIG. & INDEX NO.	PART NUMBER	CAGE	1234567	DESCRIPTION	UNITS PER ASSY.	USABLE ON CODE	SMR CODE
138-	NO NUMBER	31509		AIR COMPRESSOR INSTALLATION. REF			
				(SEE FIGURE 134 FOR NHA)			
-1	3230270	31509		. STRAP, TIE	1		XBFZZ
-2	3203739	31509		. HOSE, NONMETALLIC, 28 IN, OIL.	1		XBFZZ
				RETURN			
-3	3203076	31509		. CLAMP	2		PAFZZN
-4	8953004018	92871		. TUBE, OIL SUPPLY	1		PAFZZN
-5	8135017	92871		. CONNECTOR	1		PAFZZN
-6	92600-90000	90356		. AIR COMPRESSOR ASSEMBLY	1		PAFFFN
				(8993000069)			
				(SEE FIGURE 139 FOR DETAILS)			
-7	8135355	92871		. SCREW, CAP, HEX HD (AP)	4		PAFZZN
-8	8953004019	92871		. BRACKET	1		PAFZZN
-9	893420104	92871		. NUT, PLAIN, HEX (AP).	2		PAFZZN
-10	7903056023	92871		. WASHER, LOCK, STAR (AP)	2		PAFZZN



14232A

FIGURE 139. AIR COMPRESSOR ASSEMBLY

FIG. & INDEX NO.	PART NUMBER	CAGE	1234567	DESCRIPTION	UNITS PER ASSY.	USABLE ON CODE	SMR CODE
139-	92600-90000	S0356		AIR COMPRESSOR ASSEMBLY. (8993000069) (SEE FIGURE 138 FOR NHA)	REF		PAFFFN
-1	92620-99000	S0356		HEAD ASSEMBLY, CYLINDER.	1		PAFZZN
-2	45121-99001	S0356		SCREW, CAP, HEX HD (AP).	4		PAFZZN
-3	08915-13810	S0356		WASHER, LOCK (AP).	4		PAFZZN
-4	14552-99000	S0356		VALVE ASSEMBLY, CYLINDER.	1		PAFZZN
-5	14533-90000	S0356		CLIP, RETAINER.	1		PAFZZN
-6	NO NUMBER	S0356		VALVE, UNLOADER.	1		
-7	14556-90001	S0356		SPRING, HELICAL, UNLOADER.	1		PAFZZN
-8	14555-90001	S0356		HOUSING, UNLOADER VALVE.	1		PAFZZN
-9	92624-99000	S0356		HOLDER ASSEMBLY, DELIVERY VALVE.	1		PAFZZN
	14581-90001	S0356		SPRING, HELICAL.	1		PAFZZN
	14554-99001	S0356		HOLDER, DELIVERY VALVE.	1		PAFZZN
-10	92630-99025	S0356		VALVE ASSEMBLY, DELIVERY. (8983502755)	1		PAFFFN
-11	92623-99000	S0356		SEAT, VALVE, DELIVERY.	1		PAFZZN
-12	14580-90002	S0356		SPRING, HELICAL, DELIVERY VALVE.	1		PAFZZN
-13	14569-90002	S0356		VALVE, DELIVERY.	1		PAFZZN
-14	14572-90004	S0356		PACKING, RING.	1		PAFZZN
-15	92629-99025	S0356		VALVE ASSEMBLY, SUCTION. (8983502754)	1		PAFZZN
-16	14577-90002	S0356		HOLDER, SUCTION VALVE.	1		PAFZZN
-17	14568-90003	S0356		SPRING, HELICAL, SUCTION VALVE.	1		PAFZZN
-18	92622-99000	S0356		VALVE, SUCTION.	1		PAFZZN
-19	14572-90002	S0356		PACKING, PREFORMED, O-RING.	1		PAFZZN
-20	14571-90002	S0356		SEAT, VALVE, SUCTION.	1		PAFZZN
-21	92621-99000	S0356		HEAD.	1		PAFZZN
-22	92619-99001	S0356		PACKING, PREFORMED, O-RING.	1		PAFZZN
-23	92627-99000	S0356		FITTING, ELBOW, 90 DEGREE.	1		PAFZZN
-24	92626-99000	S0356		FITTING, ELBOW, 90 DEGREE.	1		PAFZZN
-25	92625-99000	S0356		PULLEY.	1		PAFZZN
-26	14527-90000	S0356		NUT, HEX (AP).	1		PAFZZN
-27	14526-90000	S0356		WASHER, LOCK (AP).	1		PAFZZN
-28	92631-99000	S0356		LINER.	1		PAFZZN
-29	45121-99001	S0356		SCREW, CAP, HEX HD (AP).	4		PAFZZN
-30	08915-13800	S0356		WASHER, LOCK (AP).	4		PAFZZN
-31	92619-99000	S0356		PACKING, PREFORMED, O-RING.	1		PAFZZN
-32	92615-99000	S0356		ROD ASSEMBLY, CONNECTING.	1		PAFFFN
-33	NO NUMBER	S0356		ROD AND CAP.	1		
-34	92616-99001	S0356		SCREW, CAP, HEX HD.	2		PAFZZN
-35	92617-99000	S0356		WASHER, LOCK.	2		PAFZZN
-36	92616-99002	S0356		NUT, HEX.	2		PAFZZN
-37	92616-99000	S0356		BEARING, ROD.	1		PAFZZN
-38	92628-99025	S0356		RING SET, PISTON (8983502753).	1		PAFZZN
-39	14533-90000	S0356		CLIP, PIN.	2		PAFZZN
-40	14532-90001	S0356		PIN, PISTON.	1		PAFZZN
-41	92618-99000	S0356		PISTON.	1		PAFZZN
-42	92613-99000	S0356		HOLDER, BEARING.	1		PAFZZN
-43	08110-62020	S0356		SCREW, CAP, HEX HD (AP).	4		PAFZZN
-44	45528-29003	S0356		WASHER, LOCK (AP).	4		PAFZZN
-45	14514-29003	S0356		PACKING, PREFORMED, O-RING.	1		PAFZZN
-46	92611-99001	S0356		BEARING, BALL.	1		PAFZZN
-47	92614-99000	S0356		SHAFT, CRANK.	1		PAFZZN
-48	14636-90002	S0356		KEY, WOODRUFF.	1		PAFZZN
-49	92611-99000	S0356		BEARING, BALL.	1		PAFZZN
-50	92612-99000	S0356		SEAL, OIL.	1		PAFZZN
-51	92610-99000	S0356		CRANKCASE.	1		XA

