

09831A

- | | |
|------------------------------------|--------------------------|
| 1. Windshield Assembly | 4. Right-Hand Door Glass |
| 2. Right-Hand Vent Window Assembly | 5. Left-Hand Door Glass |
| 3. Left-Hand Vent Window Assembly | 6. Rear Window Assembly |

Figure 5-162. Glass Group

between window assembly and rubber window seal.

- (11) Push rear window assembly (6) and window seal toward outside of vehicle.
- (12) Remove rear window assembly (6) and window seal.

NOTE

Removal procedures for the left and right vent window assemblies and door glass are identical.

- (13) Remove right-hand vent window assembly (2), left-hand vent window assembly (3), right-hand door glass (4) and left-hand door glass (5) by performing steps (14) through (20).
- (14) Refer to paragraph 5-5.10.8 and remove door trim panel.

- (15) Refer to paragraph 5-5.9.5 and remove water-shield.
 - (16) Refer to paragraph 5-5.10.7 and remove glass down-stop, guide channel and plastic fasteners.
 - (17) Lower door glass to bottom of door.
 - (18) Refer to paragraph 5-5.9.15 and remove 3 inches of window seal from upper door frame.
 - (19) Lower right-hand vent window assembly (2) and left-hand vent window assembly (3) and remove.
 - (20) Slide right-hand door glass (4) and left-hand door glass (5) out of rear channel and remove by pulling up and out of door.
- b. Cleaning and inspection. Refer to paragraphs 5-4.3 and 5-4.4 for general cleaning and inspection procedures. In addition, perform the following step:

- (1) Refer to paragraph 5-5.9.15 and clean window seals from window assembly cavity and flange cavity using general purpose adhesive cleaner (33, table 5-1).
- c. Repair and replacement. Replace all worn or damaged parts.
- d. Assembly and installation. Assembly is accomplished during installation. Install glass as follows:

NOTE

Installation procedures for the left and right door glass and vent window assemblies are identical.

- (1) Install right-hand door glass (4), left-hand door glass (5), right-hand vent window assembly (2) and left-hand vent window assembly (3) by performing steps (2) through (10).
- (2) Lower right-hand door glass (4) and left-hand door glass (5) into door and position in rear channel.
- (3) Refer to paragraph 5-5.10.7 and install plastic fasteners.
- (4) Slide right-hand door glass (4) and left-hand door glass (5) down to bottom of door panel.
- (5) Lower right-hand vent window assembly (2) and left-hand vent window assembly (3) into door and position securely in channel.
- (6) Refer to paragraph 5-5.9.15 and install window seals in upper door frame.
- (7) Refer to paragraph 5-5.10.7 and install guide channel and glass down-stop.
- (8) Check operation of right-hand door glass (4), left-hand door glass (5), right-hand vent window assembly (2) and left-hand vent window assembly (3).
- (9) Refer to paragraph 5-5.9.5 and install windshield.
- (10) Refer to paragraph 5-5.10.8 and install door trim panel.
- (11) Install rear window assembly (6) by performing steps (12) through (17).
- (12) Refer to paragraph 5-5.9.15 and install window seals on rear window assembly (6).
- (13) Insert 1/4 inch cord completely around window seal in flange cavity.

NOTE

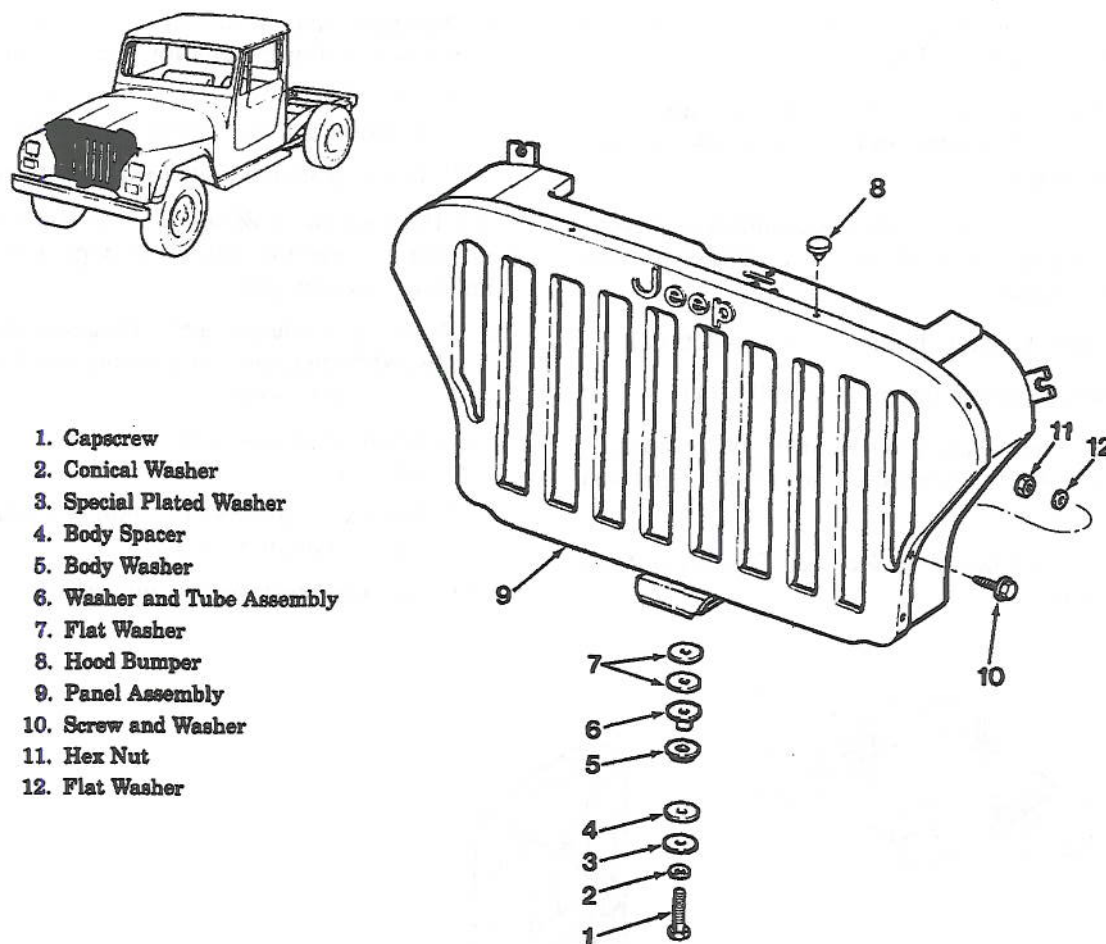
The ends of the cord should hang out over the outside surface of the window assembly approximately in the center of the upper window seal.

- (14) Place rear window assembly (6) and window seal into position in window opening with ends of cord hanging outside vehicle.
- (15) Pull on ends of cord until lip of window seal is over body panel. Remove cord.
- (16) Refer to paragraph 5-5.9.15 and install window seal. Clean excess window sealer from rear window assembly (6) and body surface.
- (17) Test rear window assembly (6) for water leaks.
- (18) Install windshield assembly (1) by performing steps (19) through (27).
- (19) Refer to paragraph 5-5.9.15 and install auto bedding and glazing compound sealer (36, table 5-1) and window seal around edge of windshield assembly. Split in window seal should be centered at bottom of windshield assembly (1) glass.
- (20) Beginning at bottom of windshield assembly (1), work window seal over flange using fiber or wooden wand.

WARNING

Adhesives are flammable and toxic. Avoid prolonged or repeated skin contact. Use only in well-ventilated areas.

- (21) Apply windshield sealer between window seal and outside of glass around entire perimeter of windshield assembly (1).
 - (22) Clean off excess sealer.
 - (23) Refer to paragraph 5-5.10.9 and install rear view mirror.
 - (24) Refer to paragraph 5-5.10.10 and install sun visors.
 - (25) Refer to paragraph 5-5.10.15 and install defroster ducts.
 - (26) Refer to paragraph 5-5.9.20 and install windshield wiper arms.
 - (27) Test windshield assembly (1) for water leaks.
- 5-5.9.17 *Grille Group*. Refer to figure 5-163, and perform the following steps to overhaul the grille group.



09779B

Figure 5-163. Grille Group

a. Removal and disassembly. Disassembly is accomplished during removal. Remove grille group as follows:

- (1) Remove screws and washers (10), hex nuts (11) and flat washers (12).
- (2) Remove cap screw (1), two flat washers (7), washer and tube assembly (6), body washer (4), special plated washer (3) and conical washer (2).
- (3) Remove hood bumper (8).
- (4) Loosen nuts attaching two radiator support rods to radiator grille guard support brackets.
- (5) Remove radiator support rods from brackets.
- (6) Remove grille panel assembly (9) from vehicle.

b. Cleaning and inspection. Refer to paragraphs 5-4.3

and 5-4.4 for general cleaning and inspection procedures.

c. Repair and replacement. Replace all worn or damaged parts.

d. Assembly and installation. Assembly is accomplished during installation. Install grille group as follows:

- (1) Position grille panel assembly (9) in vehicle.
- (2) Connect radiator support rods to grille guard support brackets using nuts.
- (3) Install hood bumper (8).
- (4) Install conical washer (2), special plated washer (3), body spacer (4), body washer (5), washer and tube assembly (6) and flat washer (7).
- (5) Secure grille panel assembly (9) using cap screw (1) and parts (2-7) listed in step (4).

- (6) Install screws and washers (10), hex nuts (11) and flat washers (12).

5-5.9.18 *Outside Mirrors Group*. Refer to figure 5-164 and perform the following steps to overhaul the outside mirrors group.

- a. Removal and disassembly. Disassembly is accomplished during removal. Remove outside mirrors group as follows:

- (1) Remove machine bolts (3) and nutserts (2).
- (2) Remove outside mirror assemblies (1).

- b. Cleaning and inspection. Refer to paragraphs 5-4.3 and 5-4.4 for general cleaning and inspection procedures.

- c. Repair and replacement. Replace all worn or damaged parts.

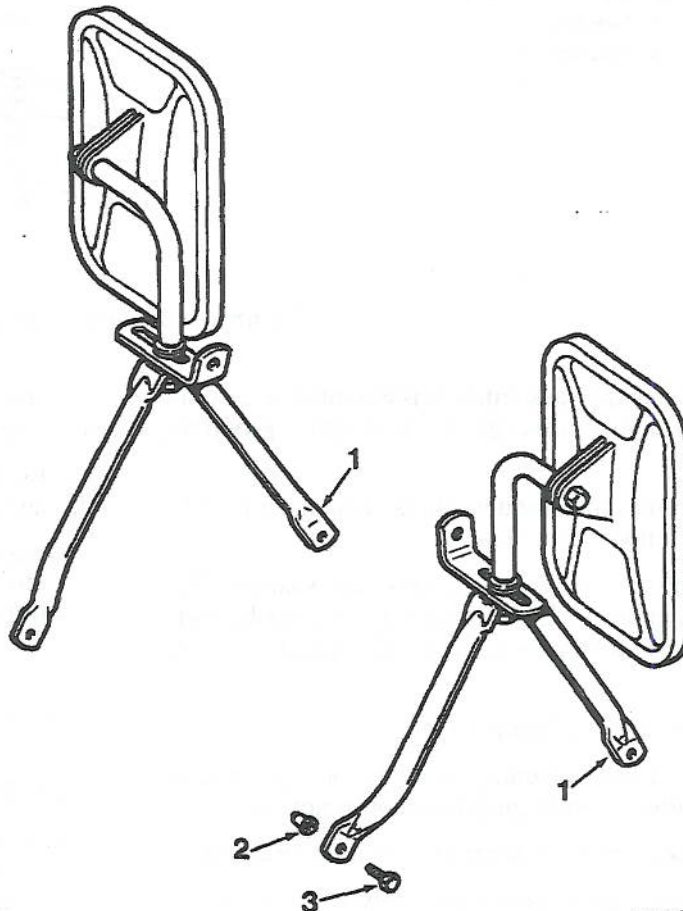
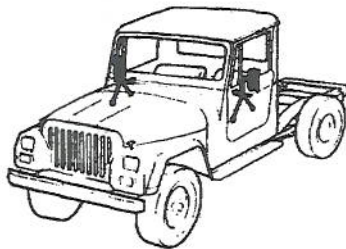
- d. Assembly and installation. Assembly is accomplished during installation. Install outside mirror group as follows:

- (1) Position outside mirror assemblies (1).
- (2) Install machine bolts (3) and nutserts (2).

5-5.9.19 *Windshield Washer Group*. Refer to figure 5-165, and perform the following steps to overhaul the windshield washer group.

- a. Removal and disassembly. Disassembly is accomplished during removal. Remove windshield washer group as follows:

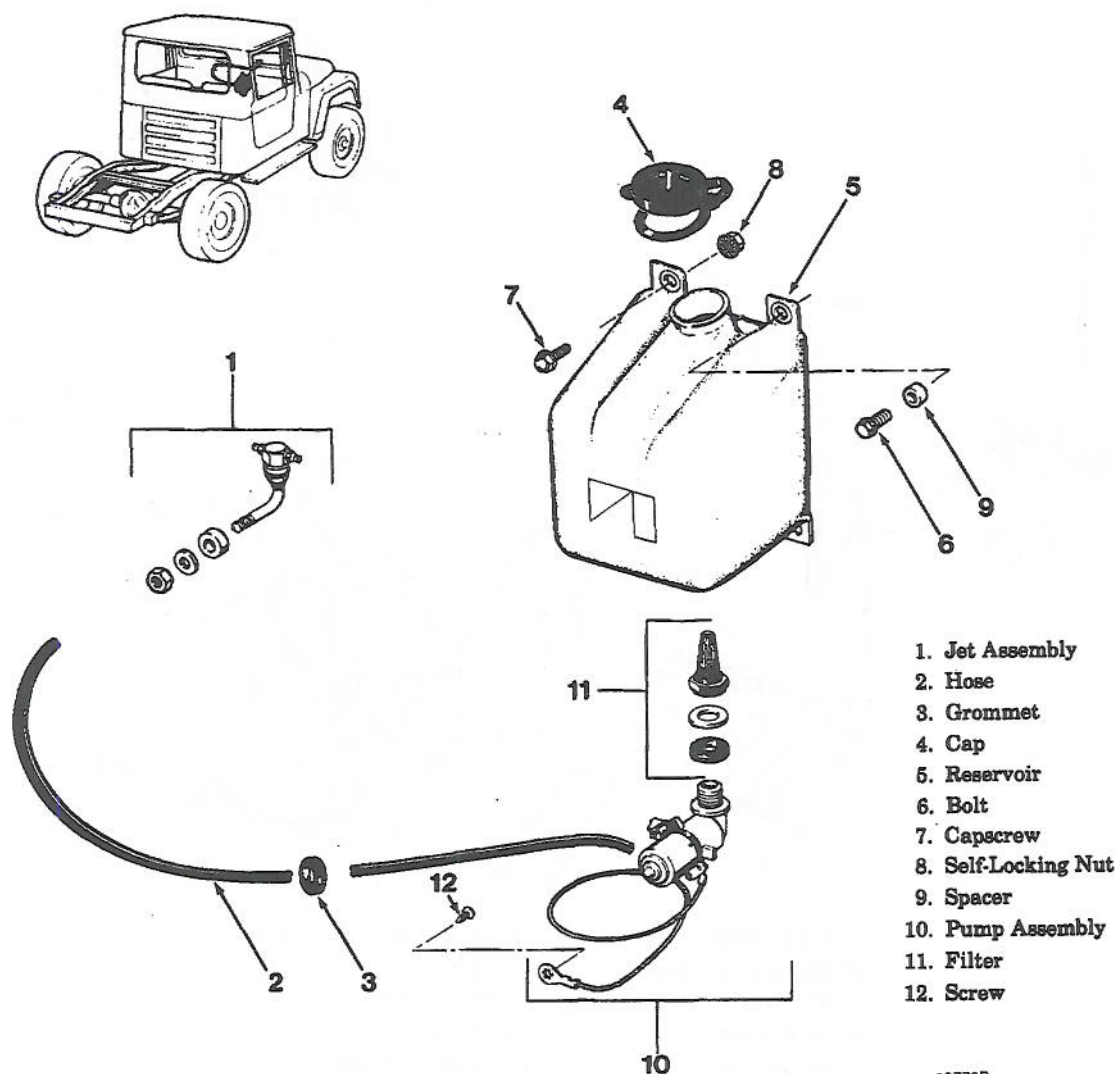
- (1) Remove jet assembly (1), hose (2) and grommet (3)
- (2) Remove capscrews (7), bolt (6), spacer (9) and self-locking nuts (8).
- (3) Remove reservoir (5) and cap (4).



1. Mirror Assembly
2. Nutsert
3. Machine Bolt

09839B

Figure 5-164. Outside Mirrors Group.



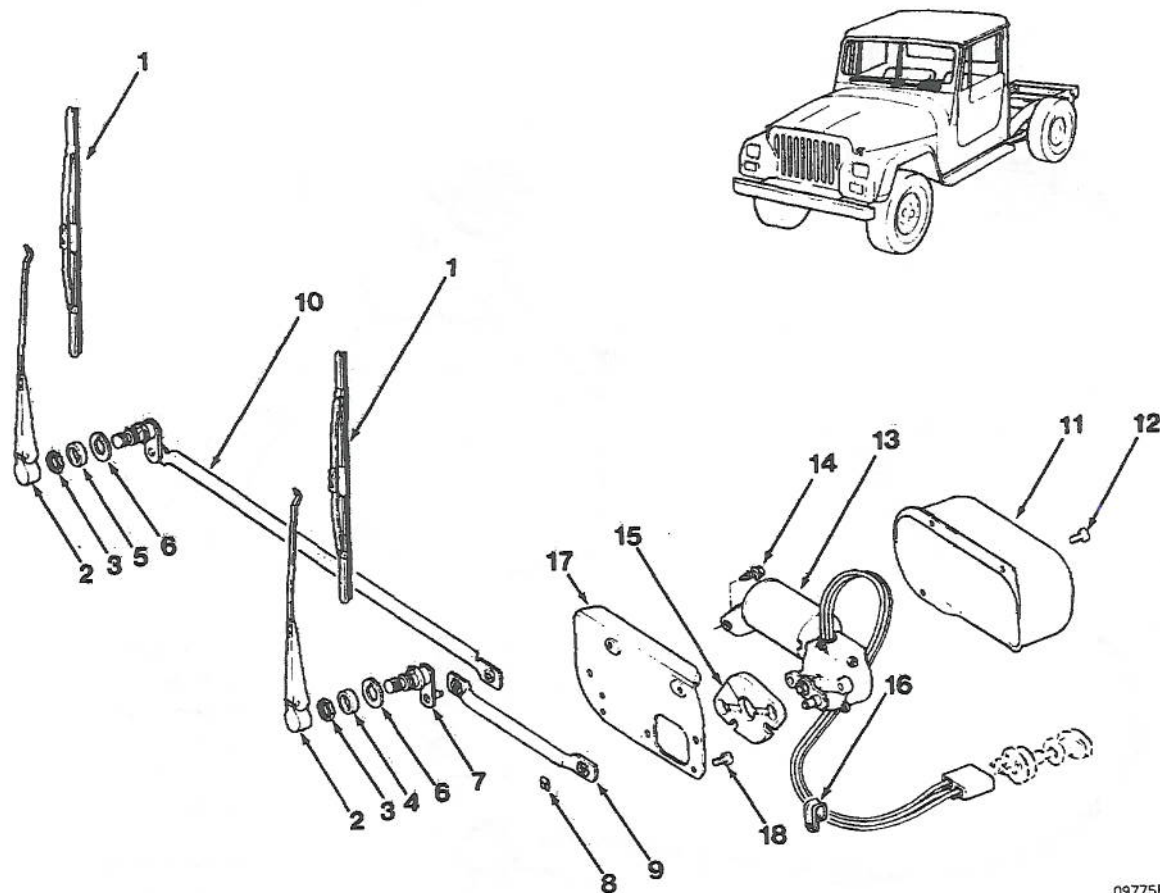
09776B

Figure 5-165. Windshield Washer Group

- (4) Remove filter (11), screw (12) and pump assembly (10).
- b. Cleaning and inspection. Refer to paragraphs 5-4.3 and 5-4.4 for general cleaning and inspection procedures.
- c. Repair and replacement. Replace all worn or damaged parts.
- d. Assembly and installation. Assembly is accomplished during installation. Install windshield washer group as follows:
 - (1) Install pump assembly (10), screw (12) and filter (11).
 - (2) Install reservoir (5) and cap (4).
 - (3) Install capscrews (7), bolt (6), spacer (9) and self-locking nuts (8).
 - (4) Install jet assembly (1), hose (2) and grommet (3).

5-5.9.20 *Windshield Wiper And Motor Group.* Refer to figure 5-166, and perform the following steps to overhaul the windshield wiper and motor group.

- a. Removal and disassembly. Disassembly is accomplished during removal. Remove windshield wiper group and motor as follows:
 - (1) Remove wiper arm assemblies (2) using remover tool #J-22128.
 - (2) Remove wiper blade (1) from wiper arm assemblies (2).



09775B

- | | |
|--------------------------|---------------------------|
| 1. Wiper Blades | 10. Windshield Wiper Body |
| 2. Wiper Arm Assembly | 11. Motor Cover |
| 3. Hex Nut | 12. Machine Screw |
| 4. Escutcheon | 13. Wiper Motor |
| 5. Escutcheon | 14. Machine Screw |
| 6. Outer Spacer | 15. Motor Gasket |
| 7. Pivot Link | 16. Clamp |
| 8. Spring Clip | 17. End Plate Assembly |
| 9. Windshield Wiper Link | 18. Machine Screw |

Figure 5-166. Windshield Wiper and Motor Group

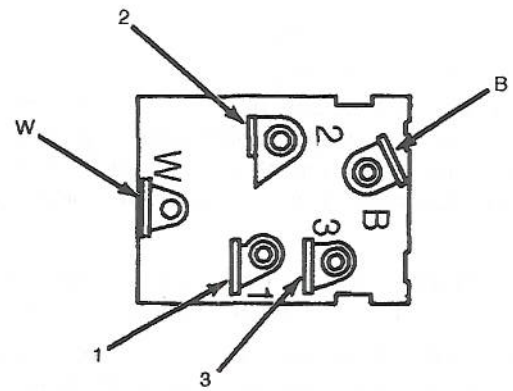
- (3) Remove hex nuts (3), escutcheons (4) and (5) and outer spacers (6).
 - (4) Fold windshield down.
 - (5) Remove machine screws (12) and wiper motor cover (11).
 - (6) Disconnect wiper motor (13) cable from wiper switch.
 - (7) Remove clamp (16).
 - (8) Remove machine screws (14), wiper motor (13) and motor gasket (15).
 - (9) Remove machine screws (18) and plate assembly (17).
 - (10) Raise windshield.
 - (11) Remove spring clip (8) and remove and disconnect windshield wiper link (9) and windshield wiper body (10).
 - (12) Separate pivot link (7) from connecting arm assembly.
- b. Cleaning and inspection. Refer to paragraphs 5-4.3 and 5-4.4 for general cleaning and inspection procedures.

- c. Repair and replacement. Replace all worn or damaged parts.
- d. Assembly and installation. Assembly is accomplished during installation. Install windshield wiper and motor group as follows:

- (1) Install pivot link (7); connect and position windshield wiper link (9) and windshield wiper body (10).
- (2) Lower windshield and install plate assembly (17) using machine screws (18).
- (3) Install motor gasket (15), wiper motor (13) and spring clip (8) using machine screws (14).
- (4) Install clamp (16).
- (5) Connect wiper motor (13) cable to wiper switch.
- (6) Install wiper motor cover (11) using machine screws (12).
- (7) Raise windshield.
- (8) Install outer spacers (6), escutcheons (4) and (5) and hex nuts (3).
- (9) Install wiper blades (1) in wiper arm assemblies (2).
- (10) Install wiper arm assemblies (2).

- e. Testing. Refer to figure 5-167 and perform the following test procedures:

- (1) With ignition switch on, check for 12 volts at switch terminal B.
- (2) If 12-volt test lamp lights, but wiper motor does not operate, connect jumper wire from ground strap on motor to good body ground.
- (3) If motor still does not operate, disconnect wiring from switch and connect terminals 2 and B with jumper wire.



Selector Position	
Off or Park	B-1
Low Speed	B-2
High Speed	B-3
Wash	B-W

Figure 5-167. Continuity Test for Wiper Switch

- (4) If motor fails to operate at low speed, green wire is broken, there is defective internal motor connection or a low-speed brush is stuck and motor must be replaced.
- (5) To check high-speed operation, connect a jumper wire between terminals 3 and B. If motor fails to operate, red wire is broken, there is a defective internal motor connection or a high-speed brush is stuck and motor must be replaced.
- (6) With wiper blades in a position other than park, connect a jumper wire between terminals 1 and B. The wipers should run on low speed and stop in park. Wiper motor conditions and causes are as follows:

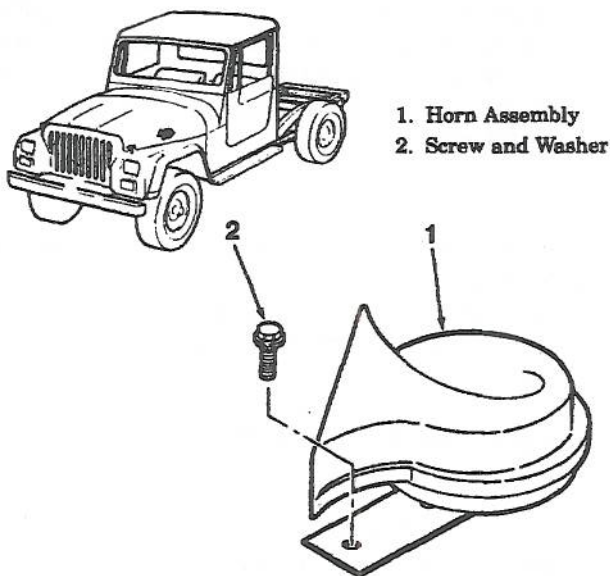
Condition	Cause
Motor doesn't run.	<ol style="list-style-type: none"> (1) Broken black wire. (2) Defective internal motor connection. (3) Defective park point set to low speed brush connection
Motor runs, but doesn't park.	Drive gear cam isn't sufficiently breaking contact point.
Motor operation is intermittent.	<ol style="list-style-type: none"> (1) Defective solder joint. (2) Defective wiring connection. (3) Body ground. (4) Worn brush.

NOTE

The two-speed wiper motor used on this vehicle is not a serviceable unit. Replace the wiper motor only if proper troubleshooting procedures and inspection of all components leads to the diagnosis of internal wiper motor problems.

5-5.9.21 *Horn Group*. Refer to figure 5-168, and perform the following steps to overhaul the horn group.

- a. Removal and disassembly. Disassembly is accomplished during removal. Remove horn group as follows:
 - (1) Disconnect wiring connector from horn assembly (1).
 - (2) Remove screw and washer (2).
 - (3) Remove horn assembly (1).
- b. Cleaning and inspection. Refer to paragraphs 5-4.3 and 5-4.4 for general cleaning and inspection procedures.
- c. Repair and replacement. Replace all worn or damaged parts.
- d. Assembly and installation. Assembly is accomplished during installation. Remove horn group as follows:
 - (1) Install horn assembly (1) using screw and washer (2). Tighten screw to torque specified by table 6-2.



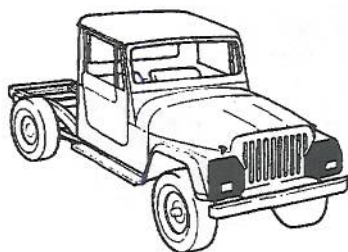
09619B

Figure 5-168. Horn Group

- (2) Connect wiring connector to horn assembly (1).

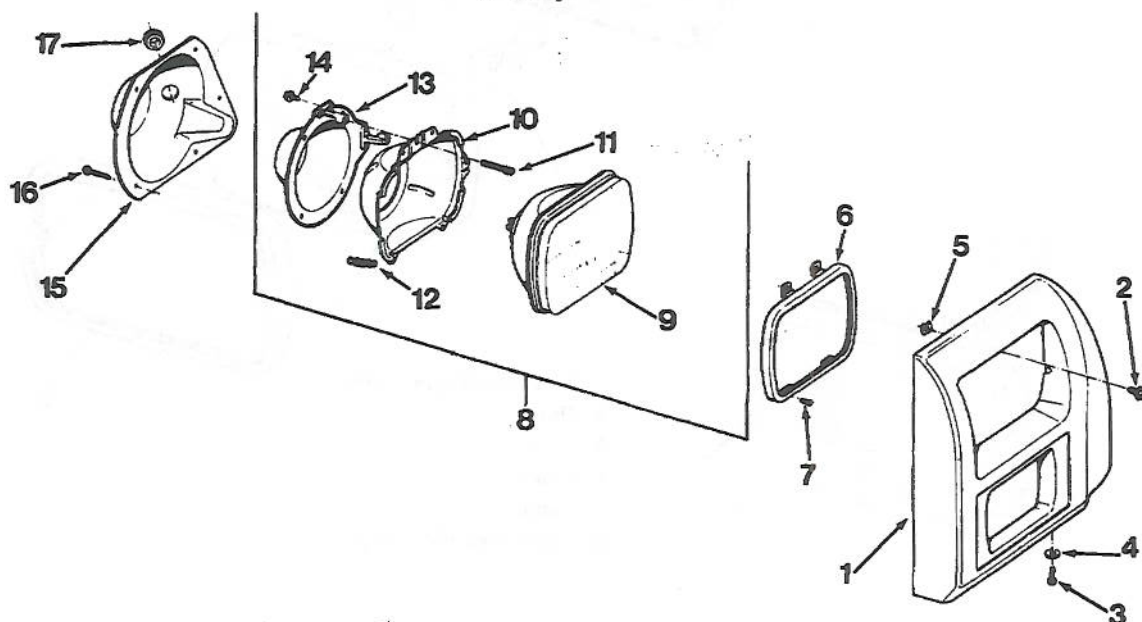
5-5.9.22 *Headlamps Group*. Refer to figure 5-169, and perform the following steps to overhaul the headlamps group.

- a. Removal. Remove headlamps group as follows:
 - (1) Remove oval head screws (2), J-type nuts (5), machine screws (3), nuts and lockwashers (4) and left headlamp bezel (1).
 - (2) Remove retainer screws (7) and retaining ring (6).
 - (3) Pull headlamp assembly (8) out and disconnect wiring assembly.
 - (4) Remove machine screws (16) and left rear cover (15).
 - (5) Remove grommet (17).
 - (6) Follow same procedure when removing right headlamp components.
- b. Disassembly. Disassemble headlamp group as follows:
 - (1) Remove adjusting screws (11) and lamp (9).
 - (2) Remove washer head capscrews (14).
 - (3) Remove mounting shell (10), adjusting spring (12) and mounting body (13).
 - (4) Follow same procedure when disassembling right headlamp assembly.
- c. Cleaning and inspection. Refer to paragraphs 5-4.3 and 5-4.4 for general cleaning and inspection procedures.
- d. Repair and replacement. Replace all worn or damaged parts.
- e. Assembly. Assemble headlamp group as follows:
 - (1) Install mounting body (13), adjusting spring (12) and mounting shell (10) using washer head capscrews (14).
 - (2) Install lamp (9) and adjusting screws (11).
 - (3) Follow same procedure when assembling right headlamp assembly.
- f. Installation. Install headlamp group as follows:
 - (1) Install grommet (17).
 - (2) Install left rear cover (15) using machine screws (16).
 - (3) Connect wiring assembly and install headlamp assembly (8).



1. Left Headlamp Bezel
2. Oval Head Screw
3. Machine Screw
4. Nut and Lockwasher
5. J-Type Nut
6. Retaining Ring
7. Retainer Screw
8. Headlamp Assembly
9. Lamp

10. Mounting Shell
11. Adjusting Screw
12. Adjusting Spring
13. Mounting Body
14. Washer Head Capscrew
15. Left Rear Cover
16. Machine Screw
17. Grommet



098908

Figure 5-169. Headlamps Group

- (4) Install retaining ring (6) using retainer screws (7).
- (5) Install left headlamp bezel (1) using oval head screws (2), J-type nuts (5) and machine screws (3) and nuts and lockwashers (4).
- (6) Follow same procedure when installing right headlamp components.

5-5.9.23 *Parking And Front Turn Lamps Group.* Refer to figure 5-170, and perform the following steps to overhaul the parking and front turn lamps group.

- a. Removal and disassembly. Disassembly is accomplished during removal. Remove parking and front turn lamps group as follows:

- (1) Remove screws and remove bezel (2) from left turn signal lamp (1).

- (2) Remove lens (3).

- (3) Remove lamps (4 and 5).

- (4) Remove lamp assembly body (6) and disconnect wire assembly.

- (5) Repeat procedure for right turn signal lamp.

- b. Cleaning and inspection. Refer to paragraphs 5-4.3 and 5-4.4 for general cleaning and inspection procedures.

- c. Repair and replacement. Replace all worn or damaged parts.

- d. Assembly and installation. Assembly is accomplished during installation. Install parking and front turn lamps as follows:

- (1) Connect wire assembly and install lamp assembly body (6).

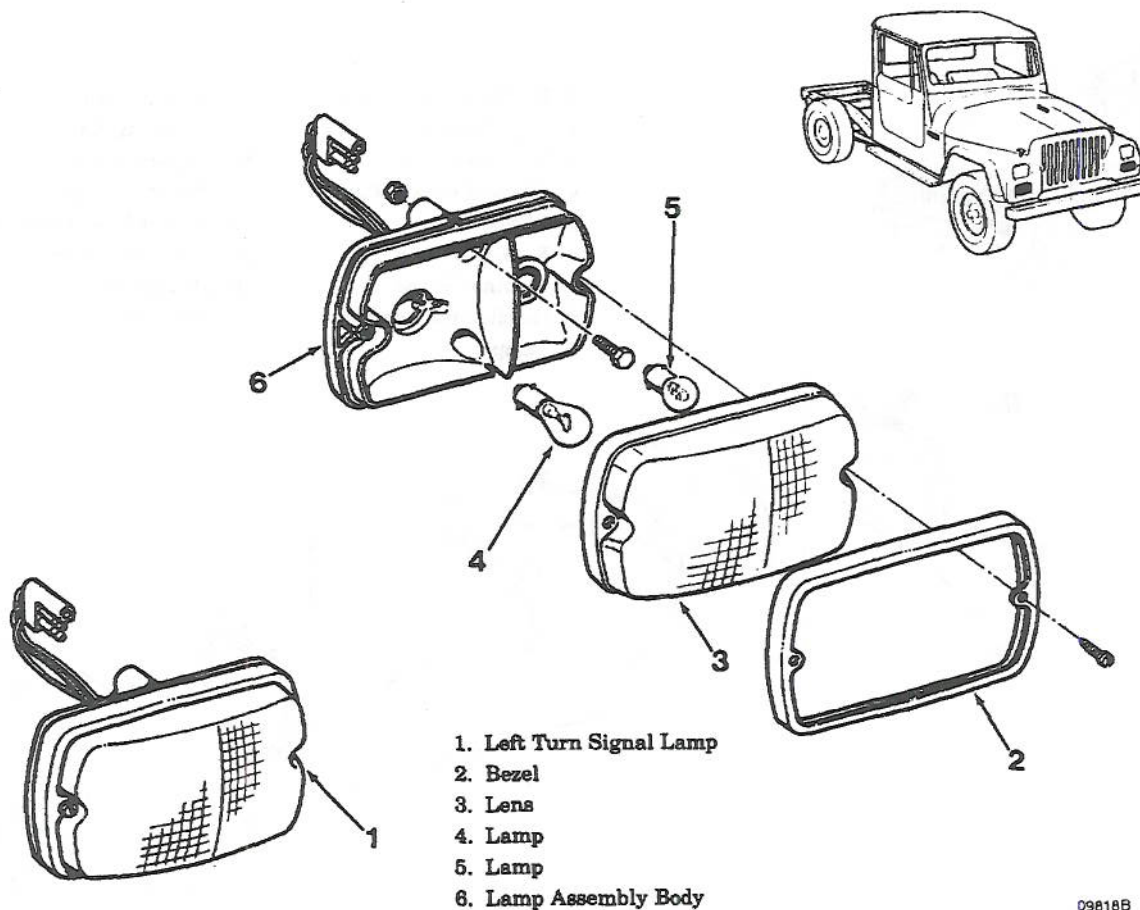
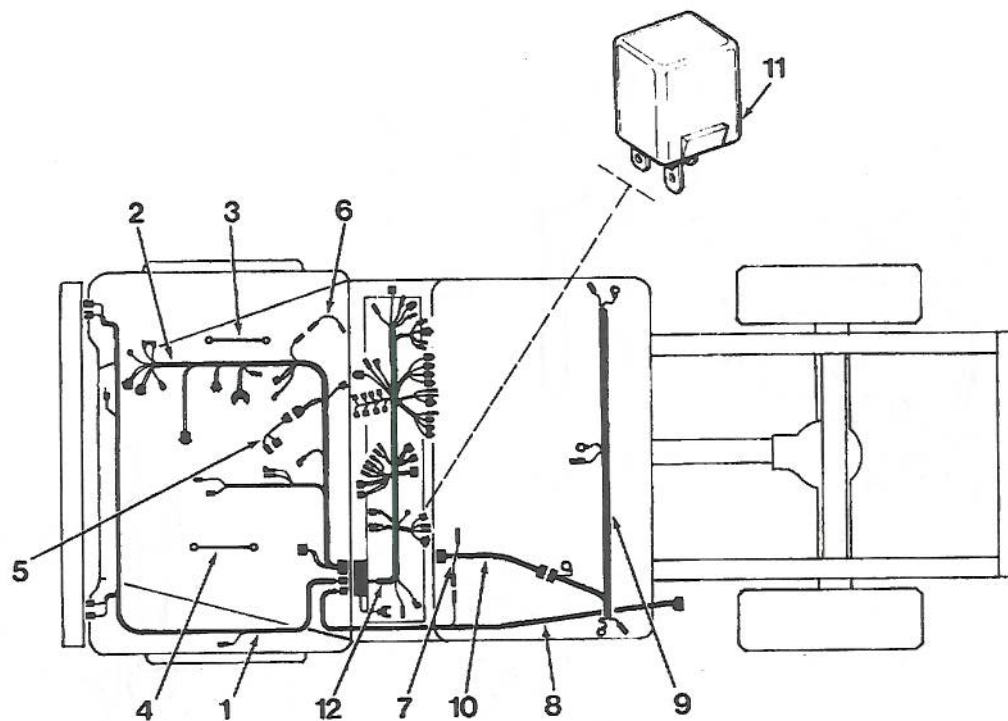


Figure 5-170. Parking and Front Turn Lamps Group

- (2) Install lamps (4 and 5).
 - (3) Install lens (3) and bezel (2) on left turn signal lamp (1).
 - (4) Repeat procedure for right turn signal lamp.
- 5-5.9.24 *Harnesses Group*. Refer to figure 5-171, and perform the following steps to overhaul the harnesses group.
- a. Removal and disassembly. Disassembly is accomplished during removal. Remove harnesses group as follows:
 - (1) Disconnect engine compartment harness (1) from head lamp assemblies and from main harness connector and remove.
 - (2) Disconnect engine harness (2) from engine components and from main harness connector and remove.
 - (3) Remove solenoid and starter cable assembly (3).

- (4) Remove ground strap (4).
- (5) Remove neutral, safety and backup lamp harness (5).
- (6) Remove heater feed cable assembly (6).
- (7) Remove fuel tank sending unit harness assembly (7).
- (8) Remove chassis harness (8).
- (9) Remove roof lamps harness (9).
- (10) Remove roof lamps jumper harness (10).
- (11) Remove horn relay (11).
- (12) Remove instrument relay harness (12).
- b. Cleaning and inspection. Refer to paragraphs 5-4.3 and 5-4.4 for general cleaning and inspection procedures.
- c. Repair and replacement. Replace all worn or damaged parts.



09914A

- | | |
|--|--|
| 1. Engine Compartment Harness | 7. Fuel Tank Sending Unit Harness Assembly |
| 2. Engine Harness | 8. Chassis Harness |
| 3. Solenoid and Starter Cable Assembly | 9. Roof Lamps Harness |
| 4. Ground Strap | 10. Roof Lamps Jumper Harness |
| 5. Neutral, Safety and Backup Lamp Harness | 11. Horn Relay |
| 6. Heater Feed Cable Assembly | 12. Instrument Relay Harness |

Figure 5-171. Harnesses Group

d. Assembly and installation. Assembly is accomplished during installation. Install harnesses group as follows:

- (1) Install instrument relay harness (12).
- (2) Install horn relay (11).
- (3) Install roof lamps jumper harness (10).
- (4) Install roof lamps harness (9).
- (5) Install chassis harness (8).
- (6) Install fuel tank sending unit harness assembly (7).
- (7) Install heater feed cable assembly (6).
- (8) Install neutral, safety and backup lamp harness (5).

(9) Install ground strap (4).

(10) Install solenoid and starter cable assembly (3).

(11) Connect engine harness (2) to engine components and main harness connector.

(12) Connect engine compartment harness (1) to headlamp assemblies and main harness connector.

5-5.9.25 *Extendable Hitch Connection Assembly*. Refer to figure 5-172, and perform the following steps to overhaul the extendable hitch connection assembly.

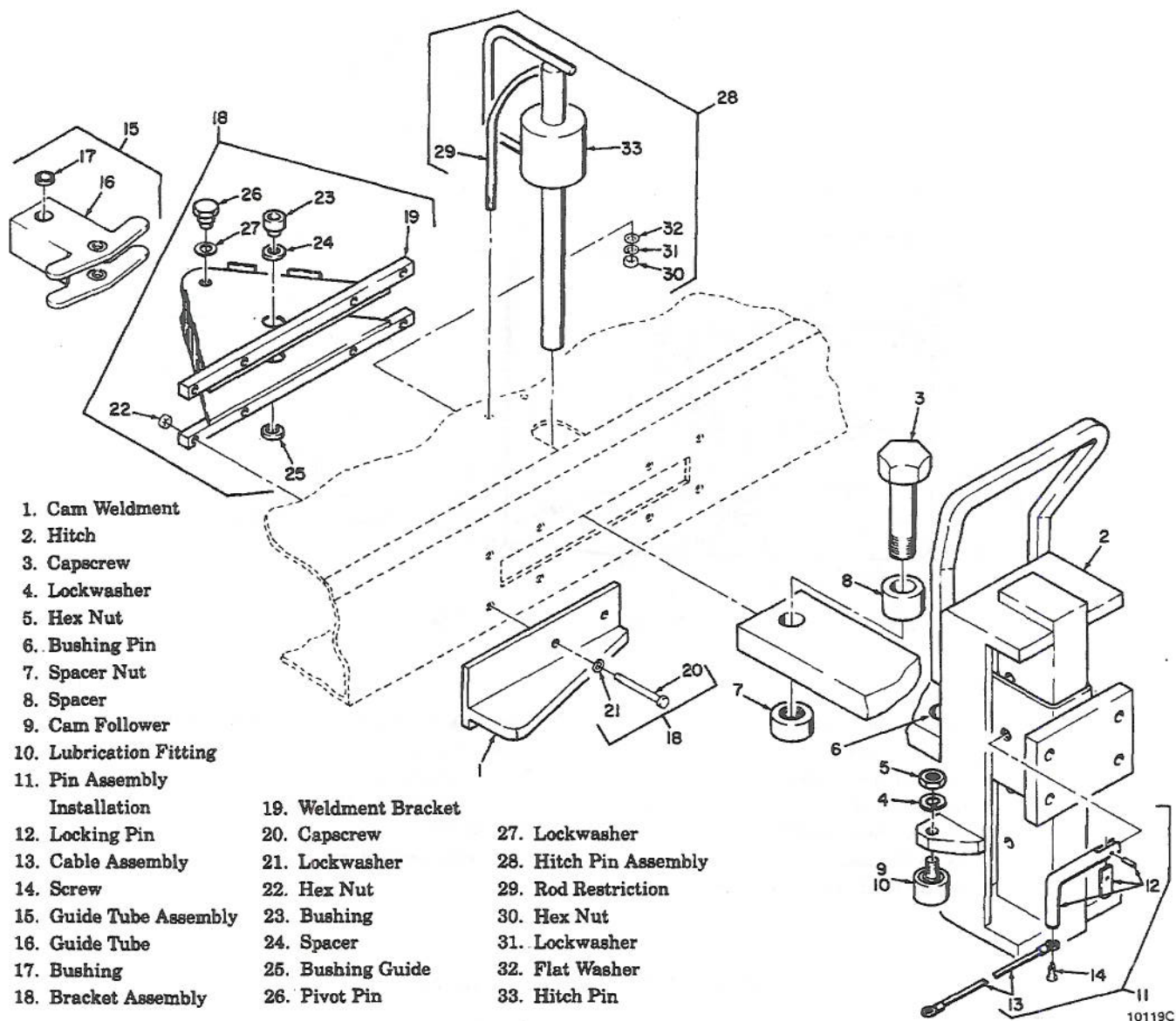


Figure 5-172. Extendable Hitch Connection Assembly

a. Removal and disassembly. Disassembly is accomplished during removal. Remove extendable hitch connection assembly as follows:

- (1) Remove nuts (30), lockwashers (31), washers (32), hitch pin (33) and restriction rod (29) to remove hitch pin assembly (28).
- (2) Remove spacer nut (7), spacer (8) and capscrew (3).
- (3) Remove pin assembly installation (11) by removing locking pin (12), screws (14) and cable (13).
- (4) Carefully slide tongue bar out of bracket assembly (18) and guide tube assembly (15). Remove bushing (6).
- (5) Remove two pivot pins (26), lockwashers (27) and guide tube assembly (15).
- (6) Remove bushing (17) from guide tube (16).
- (7) Remove two hex nuts (5), lockwashers (4) and cam followers (9) from hitch (2). Remove lubrication fittings (10) from cam followers (9).

- (8) Remove bracket assembly (18) by removing hex nuts (22), lockwashers (21) and capscrews (20) to separate weldment bracket (19) and cam weldment (1) from rear bumper.
- (9) Remove bushing (23), spacer (24) and guide (25) from bracket weldment (18).
- b. Cleaning and inspection. Refer to paragraphs 5-4.3 and 5-4.4 for general cleaning and inspection procedures.
- c. Repair and replacement. Replace all worn or damaged parts.
- d. Assembly and installation. Assembly is accomplished during installation. Install extendable hitch connection assembly as follows:
 - (1) Install bushing (23), spacer (24) and guide (25) in bracket weldment (18).
 - (2) Install bracket assembly (18) by attaching weldment bracket (19) and cam weldment (1) to bumper with capscrews (20), lockwashers (21) and hex nuts (22).
 - (3) Install guide tube assembly (15) with two pivot pins (26) and lockwashers (27).
 - (4) Install lubrication fittings (10) in cam followers (9) and install two cam followers (9) on hitch (2) with two hex nuts (5) and lockwashers (4).
 - (5) Install bushing (6) and slide tongue bar end of hitch (2) through bumper and into guide tube assembly (15).
 - (6) Install pin assembly installation (11), locking pin (12), cable (13) and screws (14).
 - (7) Install capscrew (3), spacer (8) and spacer nut (7).
 - (8) Install hitch pin assembly (28) by installing hitch pin (33) and restriction rod (29) with washers (32), lockwashers (31) and nuts (30).

5-5.9.26 *Chassis Conversion Assembly*. Refer to figure 5-173, and perform the following steps to overhaul the chassis conversion assembly.

- a. Removal and disassembly. Disassembly is accomplished during removal. Remove chassis conversion assembly as follows:
 - (2) Remove hex nuts (4), lockwashers (3), screws (2) and pintle assembly (1).
 - (2) Remove hex nuts (8), lockwashers (7), screws (6) and pintle assemblies (5).
 - (3) Remove hex nut (10), lockwasher (11) and eye bolt (9).

- (4) Remove hex nuts (15), lockwashers (14), capscrews (13) and pintle assembly (12).
- (5) Loosen nuts on hanger (17) and remove elbow (18) and spark arrestor (16).
- (6) Support front bumper (20) with suitable blocking or lifting device and remove hex nuts, lockwashers, capscrews and front bumper (20).
- (7) Support rear bumper (21) with suitable blocking or lifting device and remove capscrews (36). Remove rear bumper (21).
- (8) Refer to paragraph 5-5.9.25 and remove extendable hitch connection assembly (19).
- (9) Raise hood and remove relay (22) located under horn mounting bolt.

WARNING

Do not work under the body weldment while it is detached or raised from vehicle without first supporting it with safety jack stands device, or personal injury may result.

- (10) Attach suitable lifting device to body weldment portion of body assembly (23) and remove all attaching nuts, lockwashers, washers and capscrews.
- (11) Lift body weldment from vehicle using lifting device, place in suitable work area and remove lifting device.
- (12) Remove sending unit cover (24).
- (13) Remove hex nuts, lockwashers, washers, capscrews and front steps (25) and (26).
- (14) Remove attaching rivets and separate tool box lid (27).
- (15) Refer to paragraph 5-5.1.32 and remove fuel tank assembly (32).
- (16) Refer to paragraph 5-5.10.29 and remove electrical assembly installations (33).
- (17) Remove tool box and remove ballast assembly (30) and ballast mounting assembly (31).
- (18) Remove capscrews (36) and rub rails (34) and (35).
- (19) Remove blind rivets (29) and skid plate (28).
- (20) Refer to appropriate paragraphs in Chapter 5 of this manual and remove cab and chassis components (37) as required.

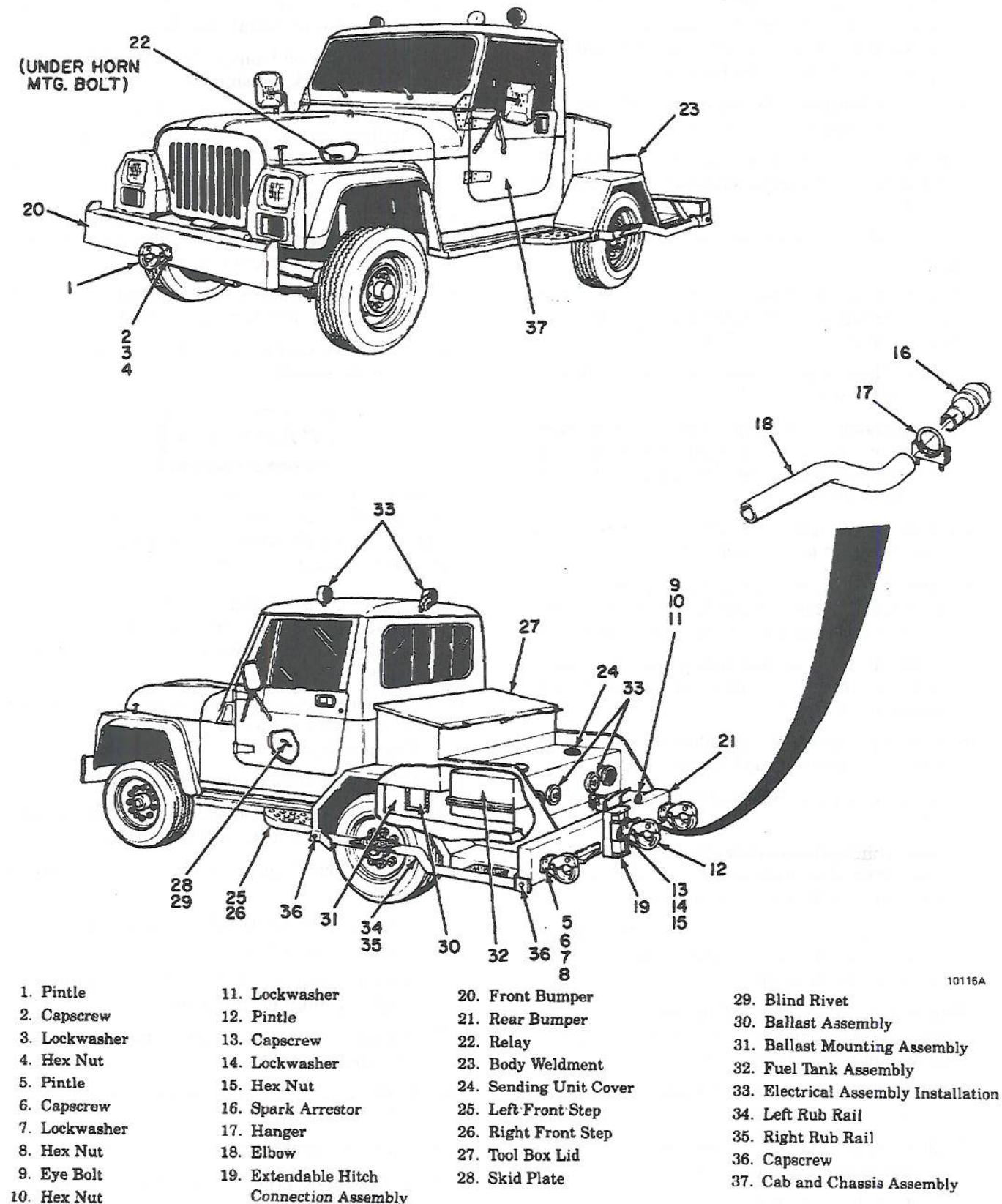


Figure 5-173. Chassis Conversion Assembly

- b. Cleaning and inspection. Refer to paragraphs 5-4.3 and 5-4.4 for cleaning and inspection procedures. In addition, check to see that pintles (5) and (12) lock securely and are free of excessive wear or damage.
- c. Repair and replacement. Replace all worn or damaged parts.
- d. Assembly and installation. Assembly is accomplished during installation. Install chassis conversion kit as follows:
 - (1) Refer to appropriate paragraphs of Chapter 5 of this manual and install cab and chassis components (37) as required.
 - (2) Install skid plate (28) using blind rivets (29).
 - (3) Install subrails (34) and (35) using capscrews (36).
 - (4) Install ballast assembly (30) and ballast mounting assembly (31) and install tool box.
 - (5) Refer to paragraph 5-5.10.29 and install electrical assembly installations (33).
 - (6) Refer to paragraph 5-5.1.32 and install fuel tank assembly (32).
 - (7) Install tool box lid (27) using rivets.
 - (8) Install steps (25) and (26) using capscrews, washers, lockwashers and hex nuts.
 - (9) Install sending unit cover (24).
 - (10) Position body weldment portion of body assembly (23) using suitable lifting device and install using capscrews, washers, lockwashers and nuts.
 - (11) Raise hood and install relay (22) under horn mounting bolt.
 - (12) Refer to paragraph 5-5.9.25 and install extendable hitch connection assembly (19).
 - (13) Position rear bumper (21) using suitable lifting device and install using capscrews (36).

- (14) Position front bumper (20) using lifting device and install using capscrews, lockwashers and hex nuts.
- (15) Install spark arrester (16) and elbow (18) using hanger (17).
- (16) Install pintle assembly (12) using capscrews (13), lockwashers (14) and hex nuts (15).
- (17) Install eyebolt (9), lockwasher (11) and hex nut (10).
- (18) Install pintle assemblies (5) using screws (6), lockwashers (7) and hex nuts (8).
- (19) Install pintle assembly (1) using screws (2), lockwashers (3) and hex nuts (4).

5-5.10. Cab Interior

5-5.10.1 *Front Seat Frame And Pad Group.* Refer to figure 5-174, and perform the following steps to overhaul the front seat frame and pad group.

- a. Removal and disassembly. Disassembly is accomplished during removal. Remove front seat frame and pad group as follows:
 - (1) Remove screws attaching passenger seat frame (1) and driver seat frame (2) to front seat tracks.
 - (2) Remove passenger seat frame (1) and driver seat frame (2).
- b. Cleaning and inspection. Refer to paragraphs 5-4.3 and 5-4.4 for general cleaning and inspection procedures.
- c. Repair and replacement. Replace all worn or damaged parts.
- d. Assembly and installation. Assembly is accomplished during installation. Install front seat frame and pad group as follows:
 - (1) Install passenger seat frame (1) and driver seat frame (2) using screws.
 - (2) Tighten screws to torque specified in table 6-2.

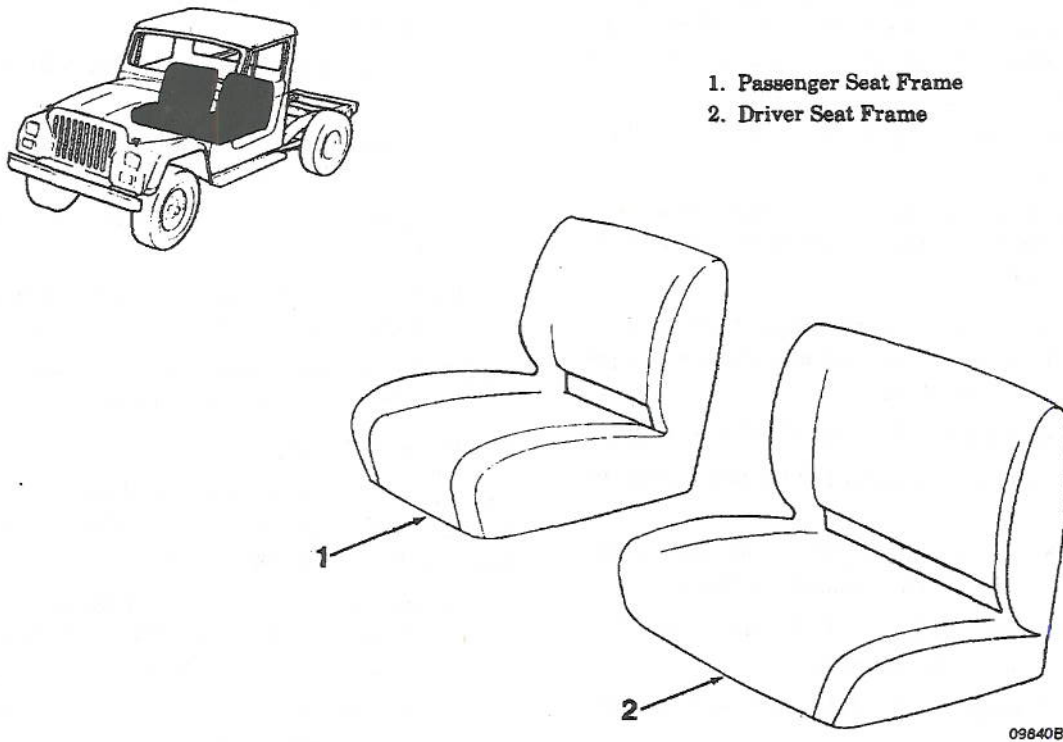


Figure 5-174. Front Seat Frame and Pad Group

5-5.10.2 *Front Seat Track Group*. Refer to figure 5-175, and perform the following steps to overhaul the front seat track group.

a. Removal and disassembly. Disassembly is accomplished during removal. Remove front seat track group as follows:

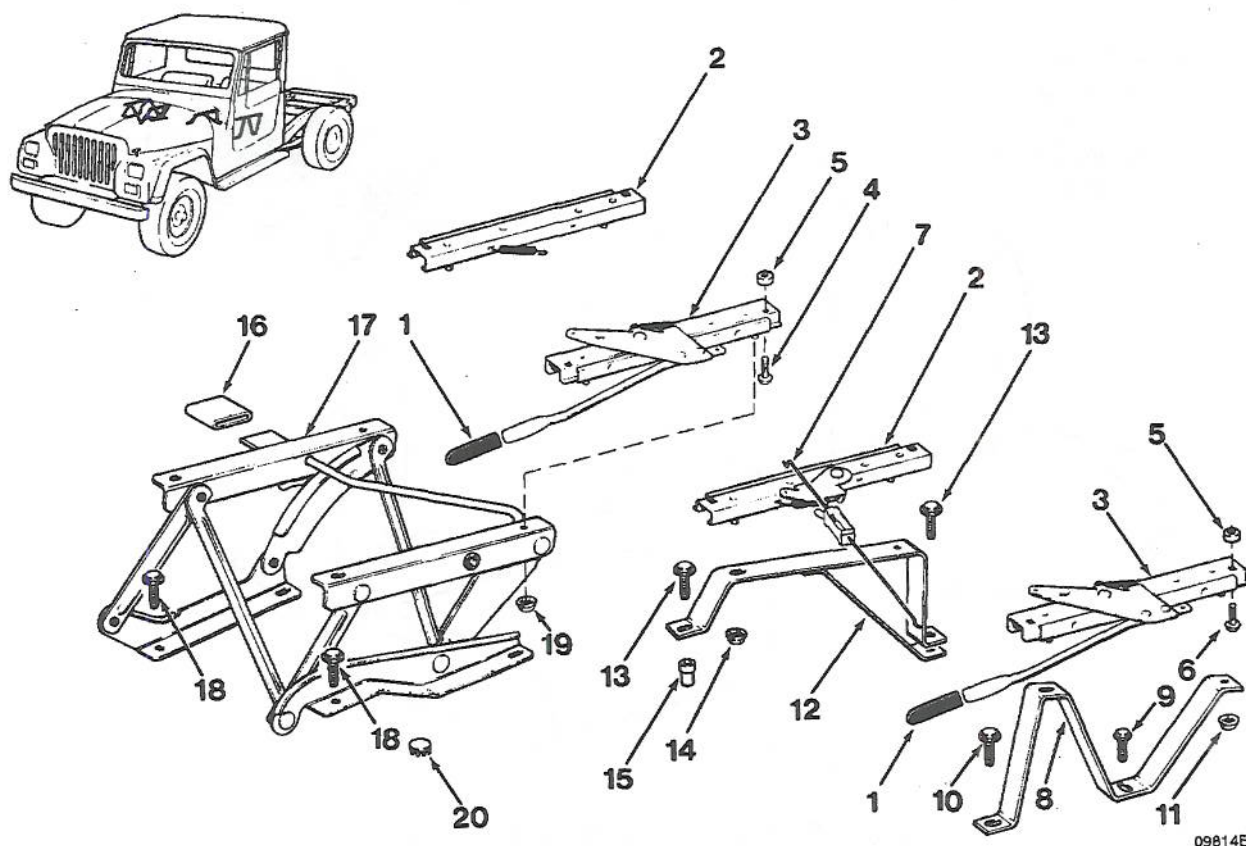
- (1) Remove screws (9), (10), (13) and (18) and remove plug nut (15) securing support assemblies (8) and (12) to floor of vehicle; remove front seat and front seat track group.
- (2) Remove hex nuts (11), (14) and (19); remove seat adjusters (3) and slave seat adjusters (2) from support assemblies (8) and (12).
- (3) Remove machine screws (6) and (4), seat adjusters (3), slave seat adjusters (2) and spacers (5) from seats.
- (4) Remove connector assembly (7).
- (5) Remove support assemblies (8) and (12).
- (6) Remove linkage assembly (17) and seat latch protector (16).
- (7) Remove lever protectors (1).
- (8) Remove plug (20).

b. Cleaning and inspection. Refer to paragraphs 5-4.3 and 5-4.4 for general cleaning and inspection procedures.

c. Repair and replacement. Replace all worn or damaged parts.

d. Assembly and installation. Assembly is accomplished during installation. Install front seat track group as follows:

- (1) Install plug (20).
- (2) Install lever protectors (1).
- (3) Install linkage assembly (17) and seat latch protector (16).
- (4) Install support assemblies (8) and (12).
- (5) Install connector assembly (7).
- (6) Install spacers (5), slave seat adjusters (2) and seat adjusters (3) on seats using machine screws (6) and (4).
- (7) Install slave seat adjusters (3) and seat adjusters (2) on support assemblies (8) and (12) using hex nuts (11), (14) and (19).



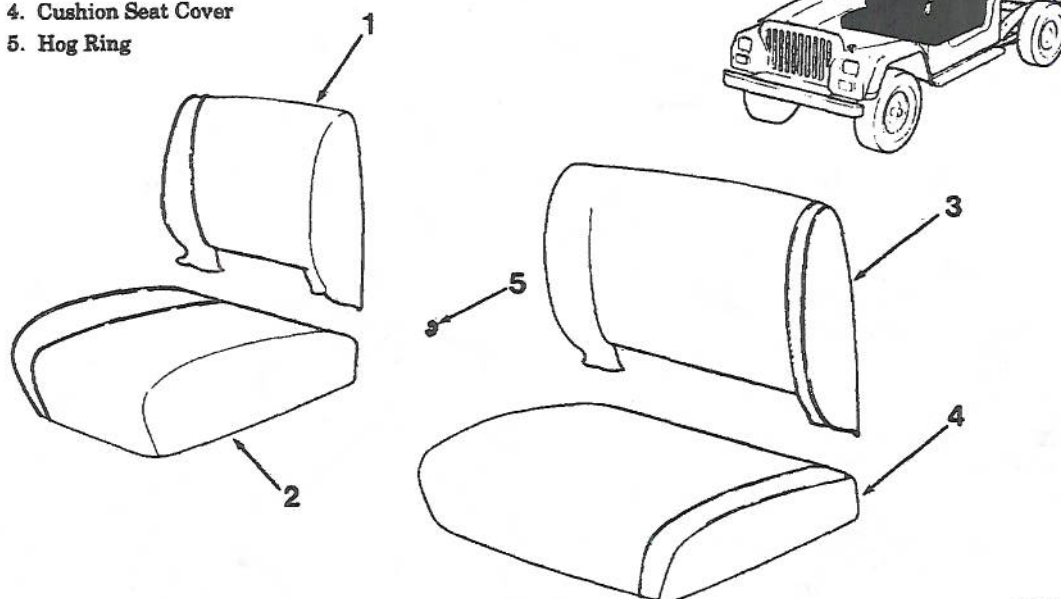
09814B

- | | | |
|------------------------|----------------------|--------------------------|
| 1. Lever Protector | 8. Support Assembly | 15. Plug Nut |
| 2. Slave Seat Adjuster | 9. Screw and Washer | 16. Seat Latch Protector |
| 3. Seat Adjuster | 10. Screw and Washer | 17. Linkage Assembly |
| 4. Machine Screw | 11. Hex Nut | 18. Screw and Washer |
| 5. Spacer | 12. Support Assembly | 19. Hex Nut |
| 6. Machine Screw | 13. Screw and Washer | 20. Plug |
| 7. Connector Assembly | 14. Hex Nut | |

Figure 5-175. Front Seat Track Group

- (8) Secure support assemblies (8) and (12) and plug nut (15) to floor using screws and washers (9), (10), (13) and (18). Tighten screws to torque specified by table 6-2.
- 5-5-10.3 *Front Seat Upholstery Group*. Refer to figure 5-176, and perform the following steps to overhaul the front seat upholstery group.
- Removal and disassembly. Disassembly is accomplished during removal. Remove front seat upholstery group as follows:
 - Remove hog rings (5) from seat cover (1) and seat cover (1).
 - Remove hog rings (5) and cushion seat cover (2).
 - Remove hog rings (5) and seat cover (3).
 - Remove hog rings (5) and cushion seat cover (4).
 - Cleaning and inspection. Refer to paragraphs 5-4.3 and 5-4.4 for general cleaning and inspection procedures.
 - Repair and replacement. Replace all worn or damaged parts.

1. Seat Cover
2. Cushion Seat Cover
3. Seat Cover
4. Cushion Seat Cover
5. Hog Ring



098158

Figure 5-176. Front Seat Upholstery Group

d. Assembly and installation. Assembly is accomplished during installation. Install front seat upholstery group as follows:

- (1) Install cushion seat cover (4) and secure with hog rings (5).
- (2) Install seat cover (3) and secure with hog rings (5).
- (3) Install cushion seat cover (2) and secure with hog rings.
- (4) Install seat cover (1) and secure with hog rings (5).

5-5.10.4 *Seat And Shoulder Belts Group*. Refer to figure 5-177, and perform the following steps to overhaul the seat and shoulder belts group.

a. Removal and disassembly. Disassembly is accomplished during removal. Remove seat and shoulder belts group as follows:

- (1) Remove covers (7) and remove pan head bolts (3) using tool #J-25359-C, spacers (4) and washers (5).
- (2) Remove seat and shoulder belts (1) and (12) from side panels.
- (3) Remove bolt covers (8).

(4) Remove pan head bolts (6) and (2) using tool #J-25359-C and remove seat and shoulder belts (1) and (12) from floor.

(5) Remove pan head bolts (2) using tool #J-25359-C and remove belt assemblies (9), (11) and (13).

(6) Remove pan head bolt (6) using tool #J-25359-C and remove belt assembly (10).

b. Cleaning and inspection. Refer to paragraphs 5-4.3 and 5-4.4 for general cleaning and inspection procedures.

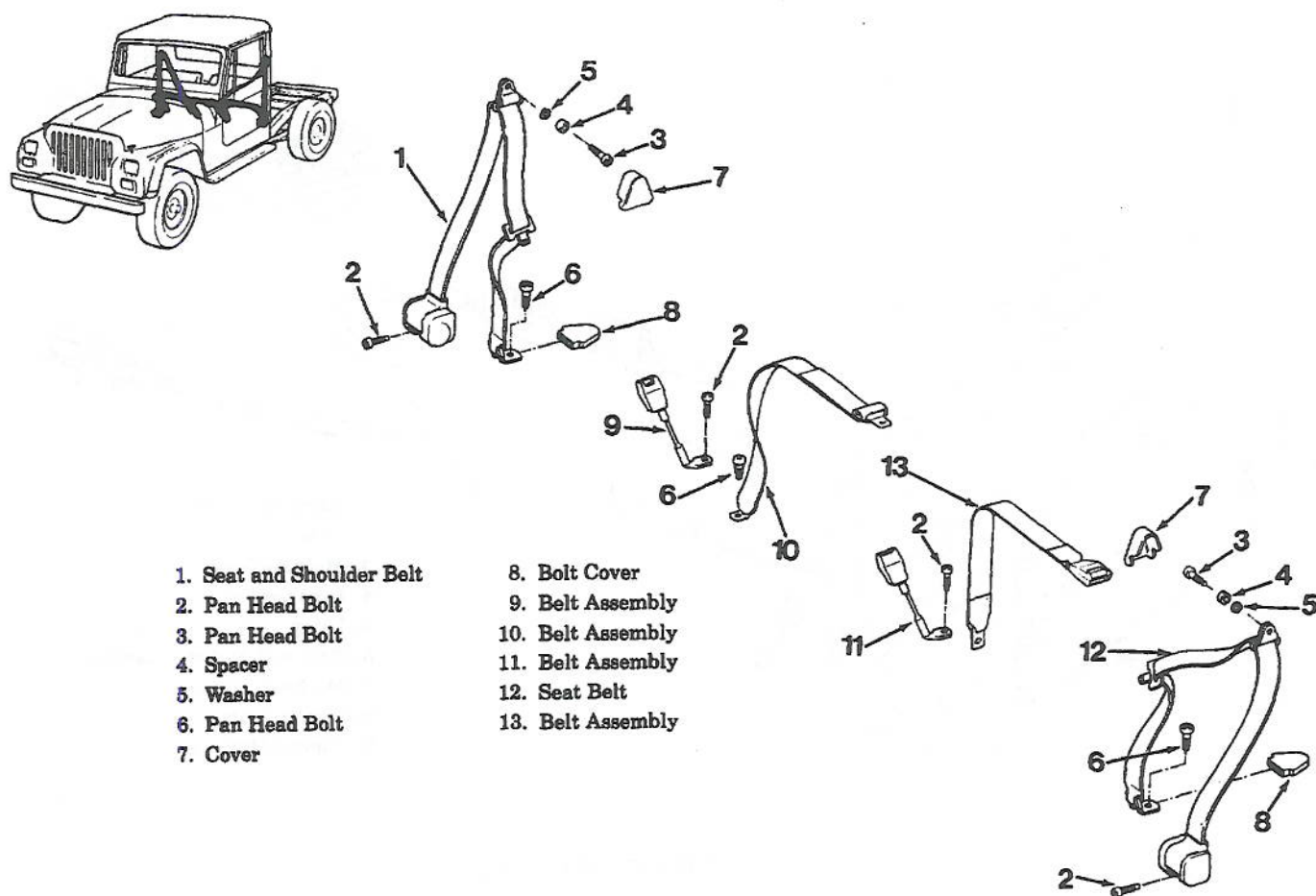
c. Repair and replacement. Replace all worn or damaged parts.

d. Assembly and installation. Assembly is accomplished during installation. Install seat and shoulder belts group as follows:

NOTE

Tighten all pan head bolts to torque specified in table 6-2.

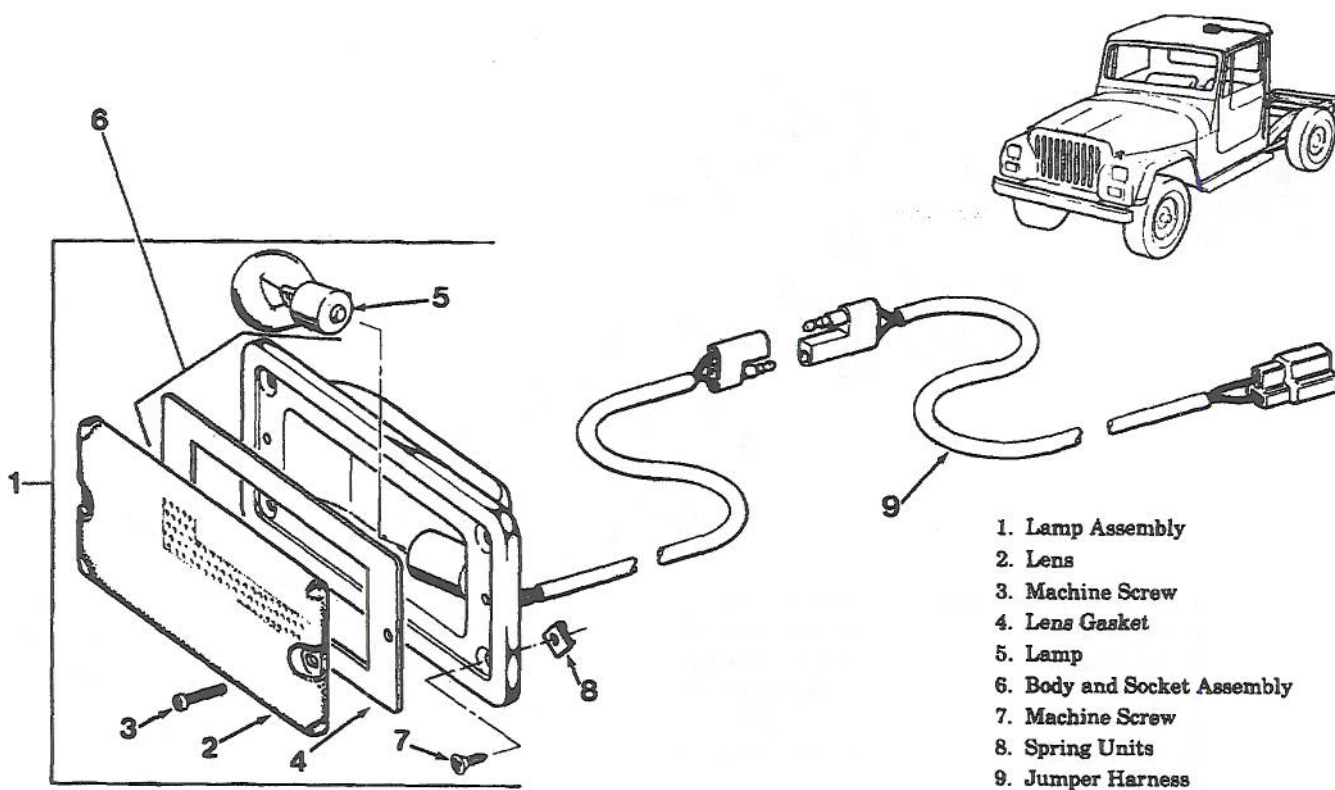
- (1) Install belt assembly (10) using pan head bolt (6). Tighten bolt with tool #J-25359-C.



09888B

Figure 5-177. Seat and Shoulder Belts

- (2) Install belt assemblies (9), (11) and (13) using pan head bolts (2). Tighten bolts with tool #J-25359-C.
 - (3) Install seat and shoulder belts (1) and (12) on floor using pan head bolts (6) and (2). Tighten bolts with tool #J-25359-C.
 - (4) Install bolt covers (8).
 - (5) Install seat and shoulder belts (1) and (12) on side panels using pan head bolts (3), spacers (4) and washers (5). Tighten bolts using tool #J-25359-C.
 - (6) Install covers (7).
- 5-5.10.5 *Dome Lamp Group*. Refer to figure 5-178, and perform the following steps to overhaul the dome lamp group.
- a. Removal and disassembly. Disassembly is accomplished during removal. Remove dome lamp group as follows:
 - (1) Remove machine screws (3) from lamp assembly; remove lens (2) and lens gasket (4).
 - (2) Remove machine screws (7) and pull body and socket assembly (6) away from ceiling.
 - (3) Disconnect jumper harness (9) connectors and remove body and socket assembly (6) and spring units (8).
 - (4) Remove light bulb from body and socket assembly (6).
 - (5) Remove wiring connector on jumper harness (9) and remove jumper harness (9).



09884B

Figure 5-178. Dome Lamp Group

b. Cleaning and inspection. Refer to paragraphs 5-4.3 and 5-4.4 for general cleaning and inspection procedures.

c. Repair and replacement. Replace all worn or damaged parts.

d. Assembly and installation. Assembly is accomplished during installation. Install dome lamp group as follows:

- (1) Connect wiring connector of jumper harness (9) to vehicle.
- (2) Install light bulb in body and socket assembly (6).
- (3) Connect jumper harness (9) connectors and install body and socket assembly (6) using machine screws (7) and spring units (8).
- (4) Install lens (2) and lens gasket (4) to lamp assembly using machine screws (3).

5-5.10.6 *Headliner And Molding Group*. Refer to figure 5-179, and perform the following steps to overhaul the headliner and molding group.

a. Removal and disassembly. Disassembly is accomplished during removal. Remove headliner and molding group as follows:

- (1) Remove fasteners (3) by cutting off heads.
- (2) Support headliner (10) and remove screws (4) and molding (2).
- (3) Remove headliner (1).

b. Cleaning and inspection. Refer to paragraphs 5-4.3 and 5-4.4 for general cleaning and inspection procedures.

c. Repair and replacement. Replace all worn or damaged parts.

d. Assembly and installation. Assembly is accomplished during installation. Install headliner and molding group as follows:

- (1) Position headliner (1) and install fasteners (3).