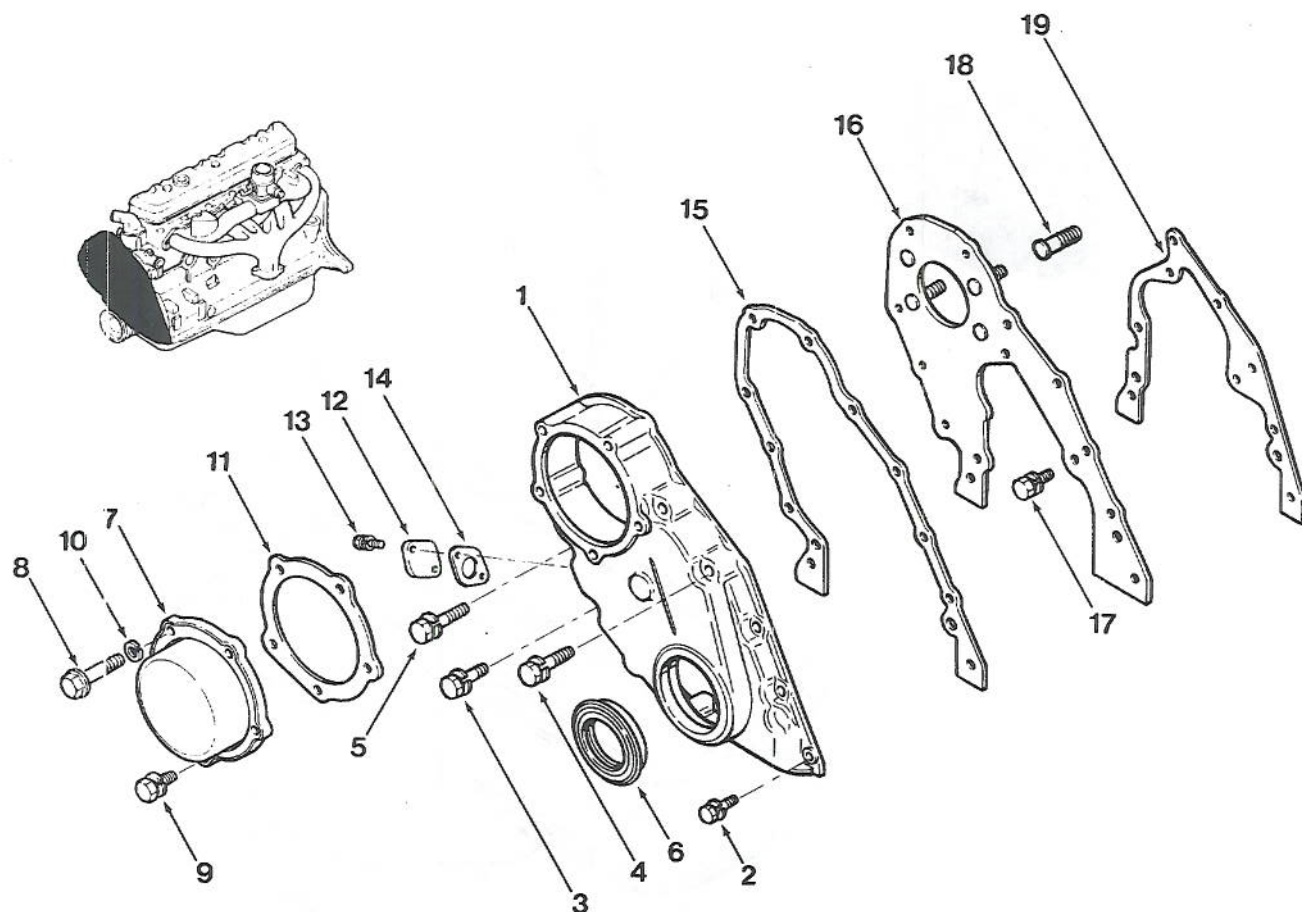


FIGURE 97. ENGINE OIL PAN GROUP

FIG. & INDEX NO.	PART NUMBER	FSCM	1234567	DESCRIPTION	UNITS PER ASSY.	USABLE ON CODE	SMR CODE
97-	NO NUMBER	92871		ENGINE OIL PAN GROUP (PARTS KIT AVAILABLE) (SEE FIGURE 2 FOR NHA)	REF		
-1	11110-90070	S0356		PAN ASSEMBLY, OIL (8135278)	1		PAFBZN
-2	08120-61228	S0356		SCREW AND WASHER (8135280) (AP)	33		XBFZZ
-3	08120-62528	S0356		SCREW AND WASHER (8135283) (AP)	1		
-4	11121-61502	S0356		GASKET, OIL PAN (8135213) (K2)	1		PAFZZN
-5	11128-69200	S0356		PLUG, DRAIN (8135279)	1		PAFZZN
-6	11026-61000	S0356		WASHER, DRAIN PLUG (8135212) (K2)	1		PAFZZN
-7	15140-C6800	S0356		GAUGE, LIQUID INDICATOR (8135281)	1		PAFZZN
-8	15147-37500	S0356		RING, RUBBER (8135214) (K2)	1		PAFZZN
-9	15150-90002	S0356		GUIDE ASSEMBLY (8135282)	1		PAFZZN
	10101-Z9128	S0356		KIT, ENGINE OVERHAUL (INCLUDES PARTS LISTED ABOVE DENOTED BY K2) (8135200) (K2)	REF		PAFZZN

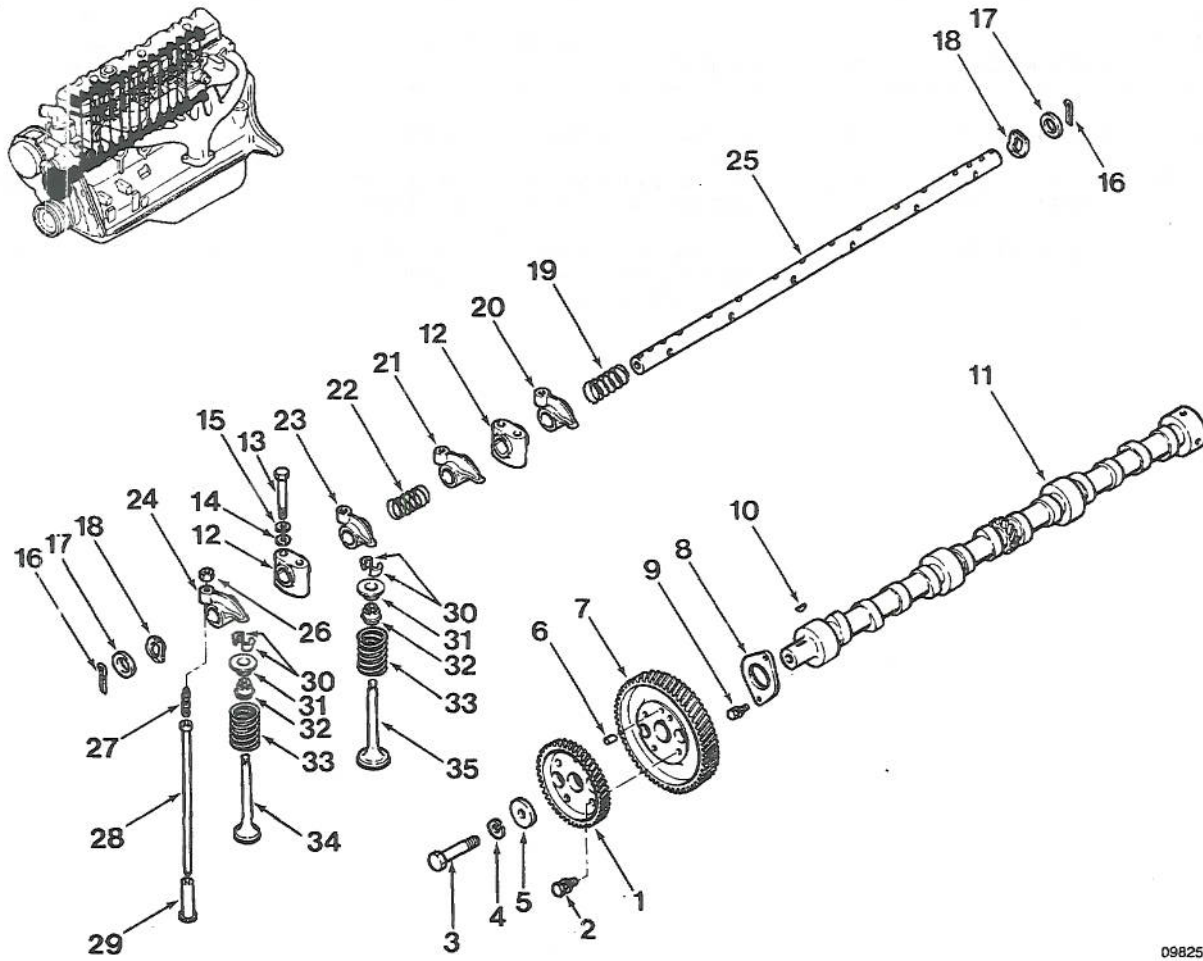


09827B

FIGURE 9B. ENGINE FRONT COVER GROUP

FIG. & INDEX NO.	PART NUMBER	FSCM	1234567	DESCRIPTION	UNITS PER ASSY.	USABLE ON CODE	SMR CODE
98-	NO NUMBER	92871		ENGINE FRONT COVER GROUP	REF		
				(PARTS KIT AVAILABLE)			
				(SEE FIGURE 2 FOR NHA)			
-1	13034-Y7503	S0356		. CASE, TIMING GEAR (8135267)	1		PAFBZN
-2	08110-83062	S0356		. SCREW AND WASHER (8135271)	4		XBFZZ
				(AP)			
-3	08110-82062	S0356		. SCREW AND WASHER (8135270)	1		XBFZZ
				(AP)			
-4	08110-85562	S0356		. SCREW AND WASHER (8135272)	2		XBFZZ
				(AP)			
-5	08110-84562	S0356		. SCREW AND WASHER (8135273)	1		XBFZZ
				(AP)			
-6	13043-76200	S0356		. SEAL, OIL (8135208) (K2)	1		PAFZZN
-7	13036-34W00	S0356		. COVER, TIMING GEAR (8135274)	1		PAFBZN
-8	08110-86562	S0356		. SCREW AND WASHER (8135275)	3		XBFZZ
				(AP)			
-9	08110-81662	S0356		. SCREW AND WASHER (8135277)	2		XBFZZ
				(AP)			
-10	08915-13810	S0356		. WASHER, SPRING (8135276) (AP)	3		XBFZZ
-11	13044-Y5201	S0356		. GASKET, COVER (8135211) (K2)	1		PAFZZN
-12	13036-J2001	S0356		. COVER (8135471)	1		MFFFZ
-13	08110-61262	S0356		. SCREW AND WASHER (8135472)	2		XBFZZ
				(AP)			
-14	13044-J2001	S0356		. GASKET (8135437) (K2)	1		PAFZZN
-15	13041-Y5201	S0356		. GASKET (8135210) (K2)	1		PAFZZN
-16	13031-90004	S0356		. PLATE ASSEMBLY (8135268)	1		PAFBZN

FIG. & INDEX NO.	PART NUMBER	FSCM	1234567	DESCRIPTION	UNITS PER ASSY.	USABLE ON CODE	SMR CODE
98-17	08110-82062	S0356		SCREW AND WASHER (8135270). (AP)	3		XBZZ
-18	16702-37501	S0356		SCREW, INJECTOR PUMP (8135269)	4		XBZZ
-19	13037-90002	S0356		GASKET, FRONT PLATE (8135209). (K2)	1		PAZZN
	10101-29128	S0356		KIT, ENGINE OVERHAUL (INCLUDES. PARTS LISTED ABOVE DENOTED BY K2) (8135200) (K2)	REF		PAZZN

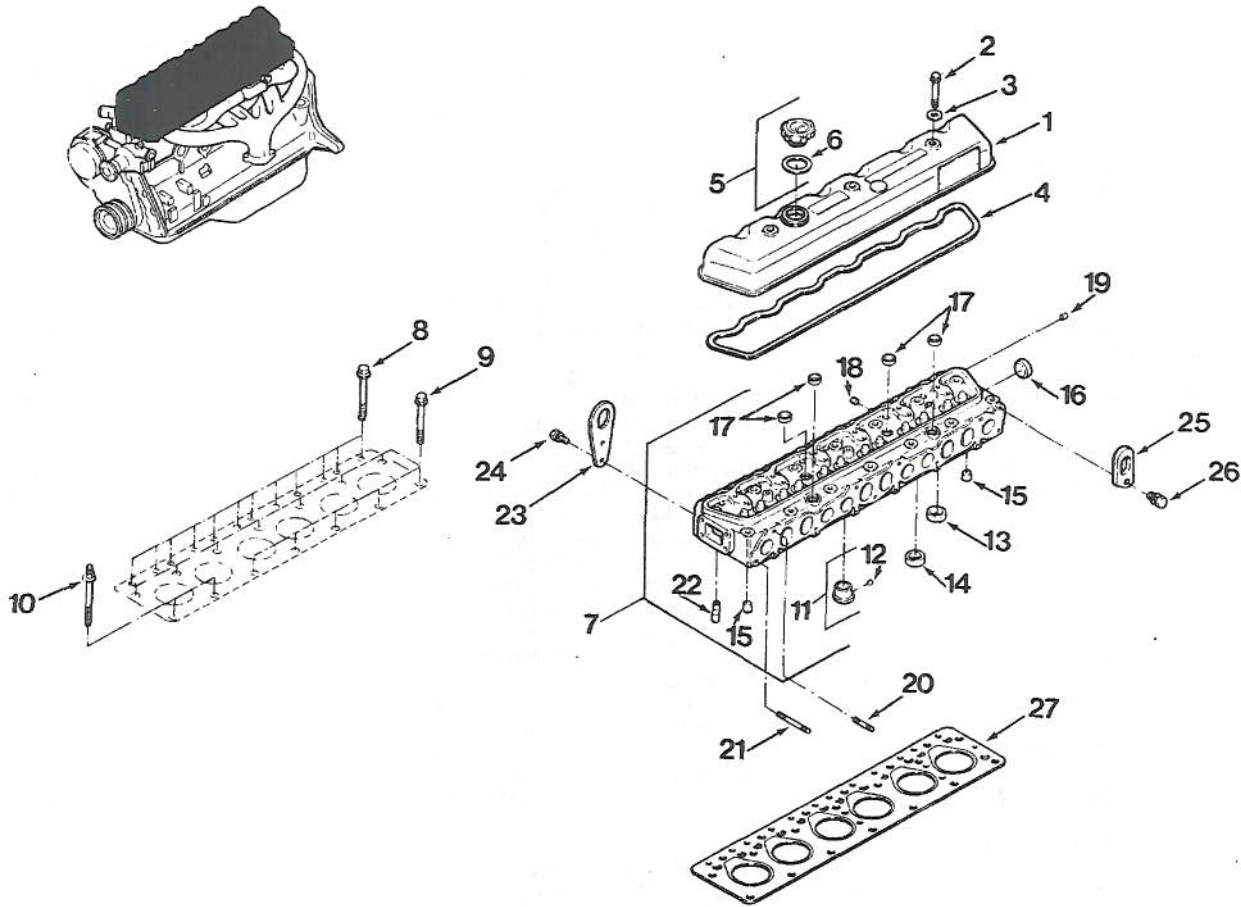


09825B

FIGURE 99. CAMSHAFT AND VALVE TRAIN GROUP

FIG. & INDEX NO.	PART NUMBER	FSCM	1234567	DESCRIPTION	UNITS USABLE		
					PER ASSY.	ON CODE	SMR CODE
99-	NO NUMBER	92871		CAMSHAFT AND VALVE TRAIN GROUP	REF		
				(PARTS KIT AVAILABLE)			
				(SEE FIGURE 2 FOR NHA)			
-1	13014-37500	S0356		. GEAR, IDLER (8135052).	1		PAFBZN
-2	08110-82062	S0356		. SCREW AND WASHER (8135270).	4		XBFZZ
				(AP)			
-3	08131-06510	S0356		. SCREW, CAP, HEX HEAD (8135058).	1		XBFZZ
				(AP)			
-4	08915-14010	S0356		. WASHER, SPRING (8135057) (AP).	1		XBFZZ
-5	13030-37500	S0356		. WASHER, PLAIN (8135056) (AP).	1		XBFZZ
-6	01522-05104	S0356		. PIN, STRAIGHT (8135001).	1		PAFZZN
-7	13024-37502	S0356		. GEAR, CAMSHAFT (8135051).	1		PAFBZN
-8	13010-90002	S0356		. PLATE, LOCATING (8135049).	1		PAFBZN
-9	08110-61662	S0356		. SCREW AND WASHER (8135050).	2		XBFZZ
				(AP)			
-10	00926-41600	S0356		. KEY, WOODRUFF (8135055).	1		XBFZZ
-11	13001-90109	S0356		. CAMSHAFT (8135048).	1		PAFBZN
-12	13222-37504	S0356		. BRACKET, ROCKER (8135062).	6		PAFBZN
-13	13224-76200	S0356		. SCREW, CAP, HEX HEAD (8135074).	12		PAFZZN
				(AP)			
-14	08915-43810	S0356		. WASHER, PLAIN (8135075) (AP).	12		XBFZZ
-15	08915-13810	S0356		. WASHER, SPRING (8135276) (AP).	12		XBFZZ
-16	08921-32510	S0356		. PIN, SPLIT (8135069).	2		PAFZZN
-17	13289-58000	S0356		. WASHER, ROCKER (8135068).	2		PAFZZN

FIG. & INDEX NO.	PART NUMBER	FSCM	1234567	DESCRIPTION	UNITS PER ASSY.	USABLE ON CODE	SMR CODE
99-18	13255-58000	S0356		. SPRING, OUTSIDE (8135067)	2		PAFZZN
-19	13256-58000	S0356		. SPRING, INSIDE (8135071)	2		PAFZZN
-20	13285-37503	S0356		. ROCKER, VALVE D (8135066)	3		PAFBZN
-21	13284-37503	S0356		. ROCKER, VALVE C (8135065)	3		PAFBZN
-22	13256-18010	S0356		. SPRING, INSIDE (8135070)	3		PAFZZN
-23	13258-37503	S0356		. ROCKER, VALVE B (8135064)	3		PAFBZN
-24	13257-37503	S0356		. ROCKER, VALVE A (8135063)	3		PAFBZN
-25	13252-61502	S0356		. SHAFT, ROCKER (8135061)	1		PAFBZN
-26	13288-37500	S0356		. NUT, HEX (8135073)	12		PAFZZN
-27	13287-37501	S0356		. SCREW, ADJUSTING (8135072)	12		PAFZZN
-28	13238-37502	S0356		. ROD, PUSH (8135060)	12		PAFBZN
-29	13231-78201	S0356		. LIFTER, VALVE (8135059)	12		PAFBZN
-30	13208-Y1400	S0356		. COLLAR, SPLIT (8135088)	24		PAFZZN
-31	13209-37501	S0356		. RETAINER (8135087)	12		PAFZZN
-32	13207-C8700	S0356		. SEAL, VALVE STEM, STANDARD SIZE (8135084) (K1) (K2)	12		PAFZZN
	13207-C8701	S0356		. SEAL, VALVE STEM, OVERSIZE, 0. 2. MILLIMETER (8135085)	12		PAFZZN
	13207-C8702	S0356		. SEAL, VALVE STEM, OVERSIZE 0. 4. MILLIMETER (8135086)	12		XA
-33	13203-T7200	S0356		. SPRING, VALVE (8135083)	12		PAFZZN
-34	13202-C8700	S0356		. VALVE, EXHAUST, STANDARD SIZE (8135080)	6		PAFZZN
	13202-C8701	S0356		. VALVE, EXHAUST, OVERSIZE 0. 2. MILLIMETER (8135081)	6		PAFBZN
	13202-C8702	S0356		. VALVE, EXHAUST, OVERSIZE 0. 4. MILLIMETER (8135082)	6		XA
-35	13201-Y5200	S0356		. VALVE, INLET, STANDARD SIZE (8135077)	6		PAFBZN
	13201-Y5201	S0356		. VALVE, INLET, OVERSIZE 0. 2. MILLIMETER (8135078)	6		PAFBZN
	13201-Y5202	S0356		. VALVE, INLET, OVERSIZE 0. 4. MILLIMETER (8135079)	6		XA
	10103-Z9129	S0356		KIT, ENGINE GASKET (INCLUDES PARTS LISTED ABOVE DENOTED BY K1) (8139231) (K1)	REF		PAFZZN



09816B

FIGURE 100. ROCKER COVER AND CYLINDER HEAD GROUP

FIG. & INDEX NO.	PART NUMBER	FSCM	1234567	DESCRIPTION	UNITS PER ASSY.	USABLE ON CODE	SMR CODE
100-	NO NUMBER	92871		ROCKER COVER AND CYLINDER HEAD GROUP (PARTS KIT AVAILABLE) (SEE FIGURE 2 FOR NHA)	REF		
-1	13265-C6800	S0356		COVER, ROCKER (8135043)	1		PAFBZN
-2	13240-37502	S0356		SCREW, CAP, HEX HEAD (8135044) (AP)	3		XBFFZ
-3	15266-C6800	S0356		WASHER, SEALING (8135435) (K1) (K2)	3		PAFZZN
-4	13270-C6800	S0356		GASKET (8135205) (K1) (K2)	1		PAFZZN
-5	15255-W1100	S0356		CAP ASSEMBLY, OIL FILLER (8135046)	1		PAFZZN
-6	15270-78500	S0356		GASKET, OIL FILLER CAP. (8135436) (K2)	1		PAFZZN
-7	11041-C6800	S0356		HEAD, DIESEL CYLINDER (8135027)	1		PAFFFFP
-8	11056-37502	S0356		SCREW, CYLINDER HEAD (8135040) (AP)	12		PAFZZN
-9	11059-76201	S0356		SCREW, CYLINDER HEAD (8135041) (AP)	12		PAFZZN
-10	11056-T3400	S0356		STUD, CYLINDER HEAD (8135470) (AP)	2		PAFZZN
-11	11076-76203	S0356		CHAMBER, CYLINDER HEAD (8135028)	6		PAFBZN
-12	11075-37501	S0356		DOWEL (8135047)	6		PAFZZN
-13	13215-Y5200	S0356		SEAT, VALVE, EXHAUST, STANDARD SIZE (8135032)	6		PAFZZN
	13215-Y5201	S0356		SEAT, VALVE, EXHAUST, OVERSIZE 0.2 MILLIMETER (8135033)	6		PAFZZN

FIG. & INDEX NO.	PART NUMBER	FSCM	1234567	DESCRIPTION	UNITS PER ASSY.	USABLE ON CODE	SMR CODE
100-	13215-Y5202	S0356		SEAT, VALVE, EXHAUST, OVERSIZE. 0.4 MILLIMETER (8135034)	6		XA
-14	13214-Y5200	S0356		SEAT, VALVE, INTAKE (8135035)	6		PAFZZN
-15	11050-76200	S0356		PLUG, TAPER (8135031)	2		XB
-16	01648-00084	S0356		PLUG, WELCH (8135002)	1		PAFZZN
-17	11019-76200	S0356		PLUG, WELCH (8135029)	4		PAFZZN
-18	00933-20650	S0356		PLUG, BLIND (8135010)	6		XB
-19	00933-20650	S0356		PLUG, BLIND (8135010)	2		PAFZZN
-20	01151-01004	S0356		STUD (8135037)	8		PAFZZN
-21	14018-90016	S0356		STUD (8135045)	1		PAFZZN
-22	11052-76203	S0356		PIPE, PUSH ROD (8135036)	12		PAFZZN
-23	10005-04000	S0356		SLINGER (8135038)	1		PAFZZN
-24	08120-82028	S0356		SCREW AND WASHER (8135285) (AP)	2		XBZZ
-25	10006-37500	S0356		SLINGER (8135039)	1		PAFZZN
-26	08124-02028	S0356		SCREW AND WASHER (8135030) (AP)	1		XBZZ
-27	11044-61514	S0356		GASKET, HEAD (8135204) (K1) (K2)	1		PAFZZN
	10103-Z9129	S0356		KIT, ENGINE GASKET (INCLUDES PARTS LISTED ABOVE DENOTED BY K1) (8135231) (K1)	REF		PAFZZN
	10101-Z9128	S0356		KIT, ENGINE OVERHAUL (INCLUDES PARTS LISTED ABOVE DENOTED BY K2) (8135200) (K2)	REF		PAFZZN

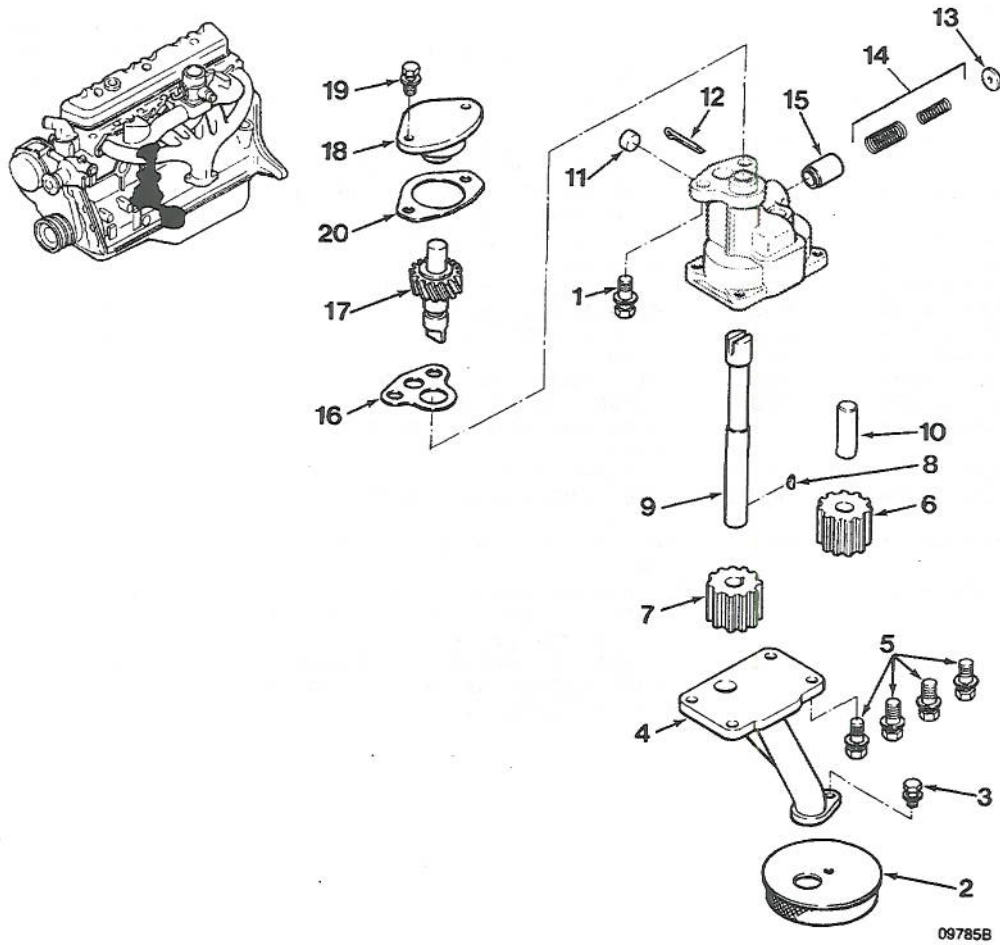
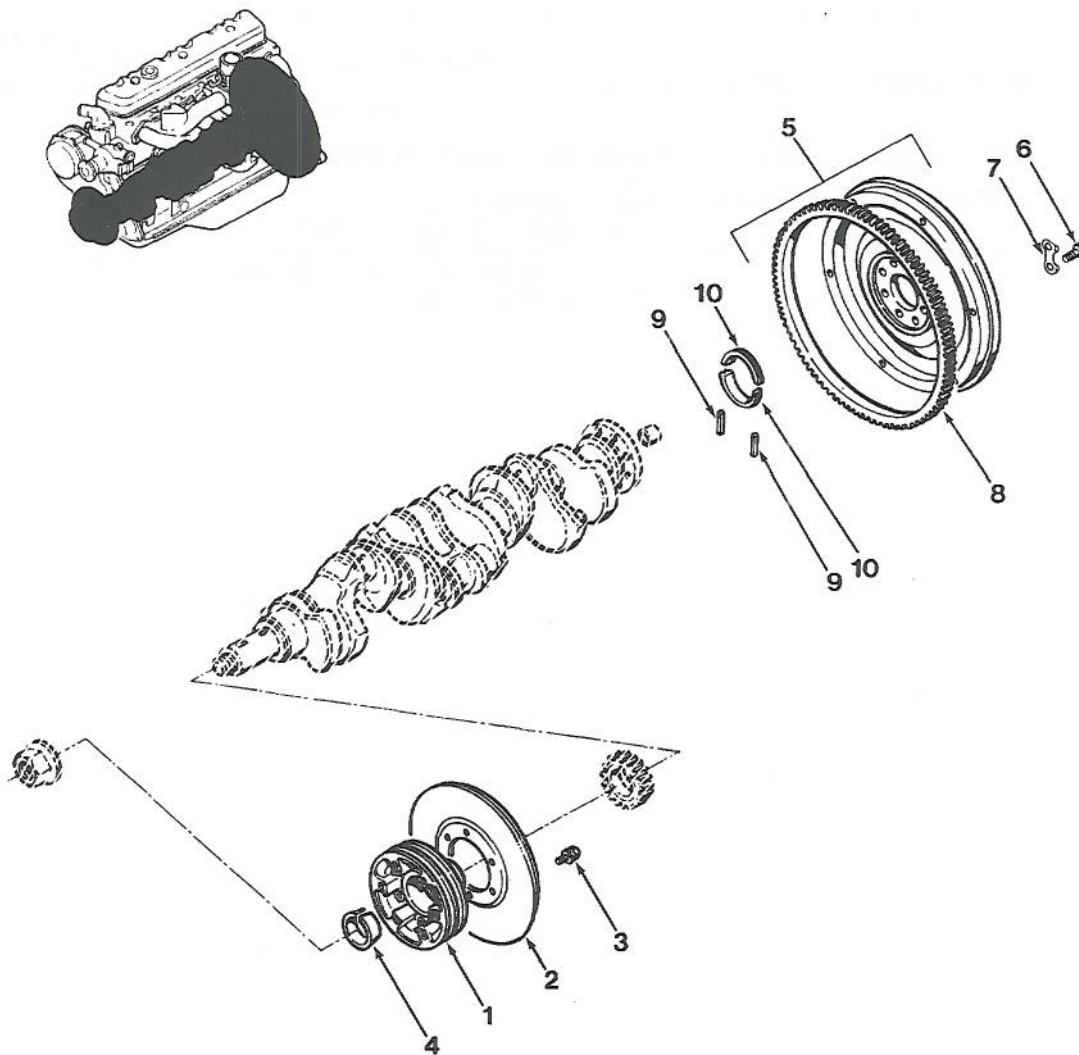


FIGURE 101. OIL PUMP GROUP

FIG. & INDEX NO.	PART NUMBER	FSCM	1234567	DESCRIPTION	UNITS USABLE PER ASSY.	ON CODE	SMR CODE
101-	NO NUMBER	92871		OIL PUMP GROUP (PARTS KIT. AVAILABLE) (SEE FIGURE 2 FOR NHA)	REF		
-1	15010-90065 08120-82028	S0356 S0356		. PUMP ASSEMBLY, OIL (8135286) . SCREW AND WASHER (8135285). (AP)	1 2		PAFFFP XBFZZ
-2	15050-J5301	S0356		. STRAINER ASSEMBLY (8135309).	1		PAFBZN
-3	08120-61662	S0356		. SCREW AND WASHER (8135308). (AP)	1		XBFZZ
-4	15015-90010	S0356		. COVER (8135307).	1		PAFBZN
-5	08120-88062	S0356		. SCREW AND WASHER (8135306). (AP)	4		XBFZZ
-6	15023-61503	S0356		. GEAR, DRIVEN (8135305).	1		PAFBZN
-7	15021-61503	S0356		. GEAR, DRIVE (8135474).	1		PAFBZN
-8	00926-31300	S0356		. KEY, WOODRUFF (8135304).	1		XBFZZ
-9	15027-C6800	S0356		. SHAFT, DRIVE (8135303).	1		PAFBZN
-10	15028-61502	S0356		. SHAFT, DRIVEN GEAR (8135473).	1		PAFBZN
-11	15199-04000	S0356		. PLUG, BLIND (8135314).	1		PAFZZN
-12	00921-43510	S0356		. PIN, COTTER (8135313).	1		XBFZZ
-13	15136-37500	S0356		. WASHER, FLAT (8135312).	1		XBFZZ
-14	15133-37500	S0356		. SPRING SET (8135311).	1		PAFBZN
-15	15132-37501	S0356		. VALVE (8135310).	1		PAFZZN
-16	15066-90007	S0356		. GASKET, OIL PUMP (8135215) (K2).	1		PAFZZN
-17	15040-90003	S0356		. SPINDLE ASSEMBLY (8135024).	1		PAFBZN
-18	22178-90004	S0356		. SUPPORT, SPINDLE (8135025).	1		PAFBZN

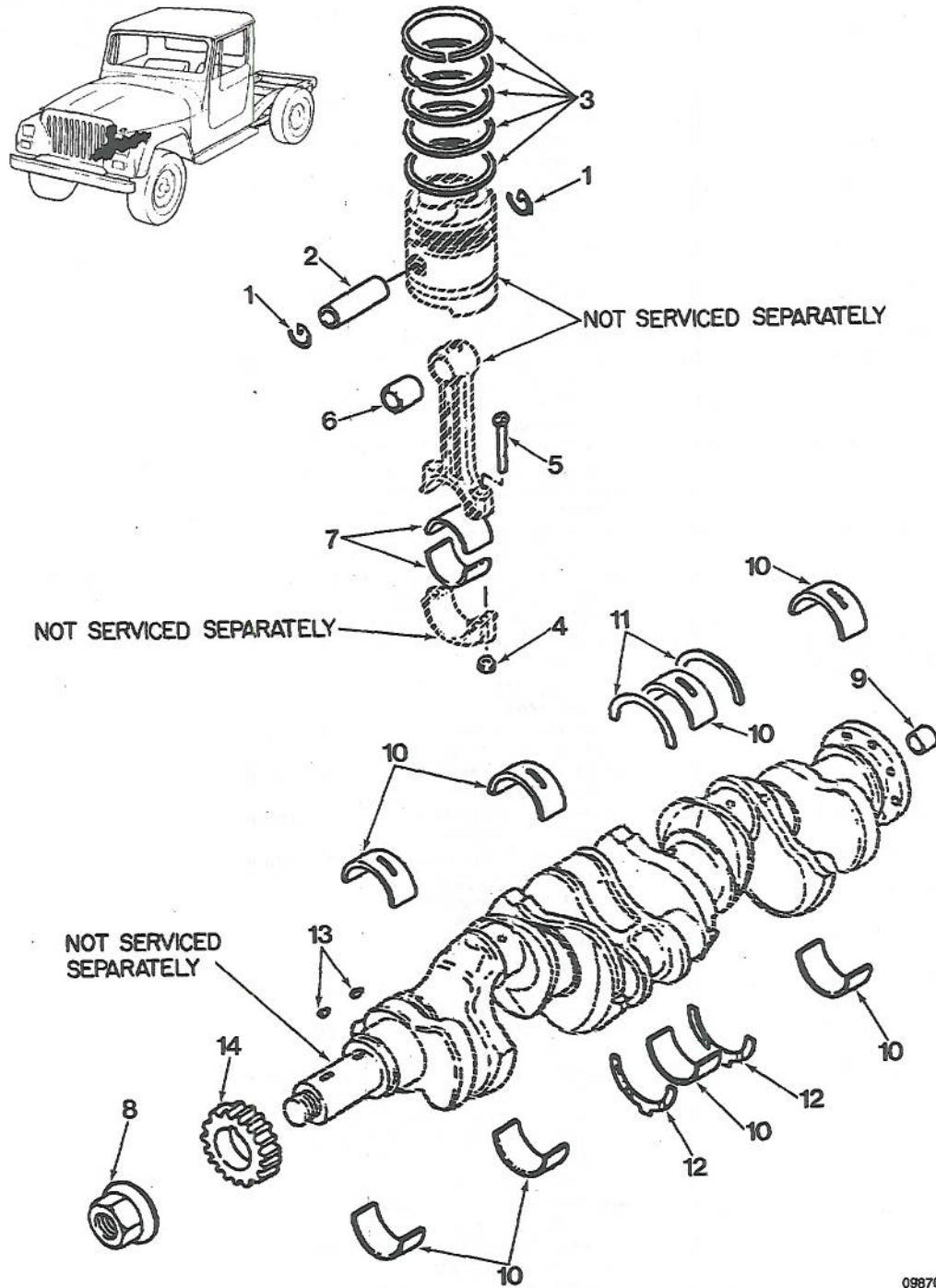
FIG. & INDEX NO.	PART NUMBER	FSCM	1234567	DESCRIPTION	UNITS PER ASSY.	USABLE ON CODE	SMR CODE
101-19	08120-61628	S0356		SCREW AND WASHER (8135026). (AP)	2		XBFZZ
-20	22179-90001	S0356		GASKET, SUPPORT (PARTS KIT AVAILABLE) (8135203) (K2)	1		PAFZZN
	10101-29128	S0356		KIT, ENGINE OVERHAUL (INCLUDES PARTS LISTED ABOVE DENOTED BY K2) (8135200) (K2)	REF		PAFZZN



09766B

FIGURE 102. CRANKSHAFT PULLEY AND FLYWHEEL GROUP

FIG. & INDEX NO.	PART NUMBER	CAGE	DESCRIPTION	UNITS PER ASSY.	USABLE ON CODE	SMR CODE
102--	NO NUMBER	S0356	CRANKSHAFT PULLEY AND FLYWHEEL GROUP (PARTS KIT AVAILABLE) (SEE FIGURE 2 FOR NHA)	REF		
-1	12305-90060	S0356	PULLEY, CRANKSHAFT (LESS AIR COMPRESSOR) (8135315)	1		PAFBZN
	12305-90300	S0356	PULLEY, CRANKSHAFT (WITH AIR COMPRESSOR) (8993000072)	1		PAFBZN
-2	12306-61503	S0356	DAMPER, CRANKSHAFT (8135318)	1		PAFBZN
-3	08120-81628	S0356	SCREW AND WASHER (8135319) (AP)	6		XBFZZ
-4	12307-61501	S0356	BUSHING, CONE (8135316)	1		PAFBZN
-5	12310-90167	S0356	FLYWHEEL ASSEMBLY (8993000033)	1		PAFBZN
-6	12316-76200	S0356	SCREW, CAP, HEX HEAD, FLYWHEEL (8135324) (AP)	8		PAFZZN
-7	12314-61500	S0356	PLATE, LOCK (8135325) (AP)	4		PAFZZN
-8	12312-61500	S0356	GEAR, RING (8135321)	1		PAFZZN
-9	12289-14600	S0356	SEAL, OIL, BEARING CAP (8135201) (K2)	2		PAFZZN
-10	12279-76200	S0356	SEAL, OIL, BEARING CAP (8135202) (K2)	2		PAFZZN
	10101-79128	S0356	KIT, ENGINE OVERHAUL (INCLUDES PARTS LISTED ABOVE DENOTED BY K2) (8135200) (K2)	REF		PAFZZN

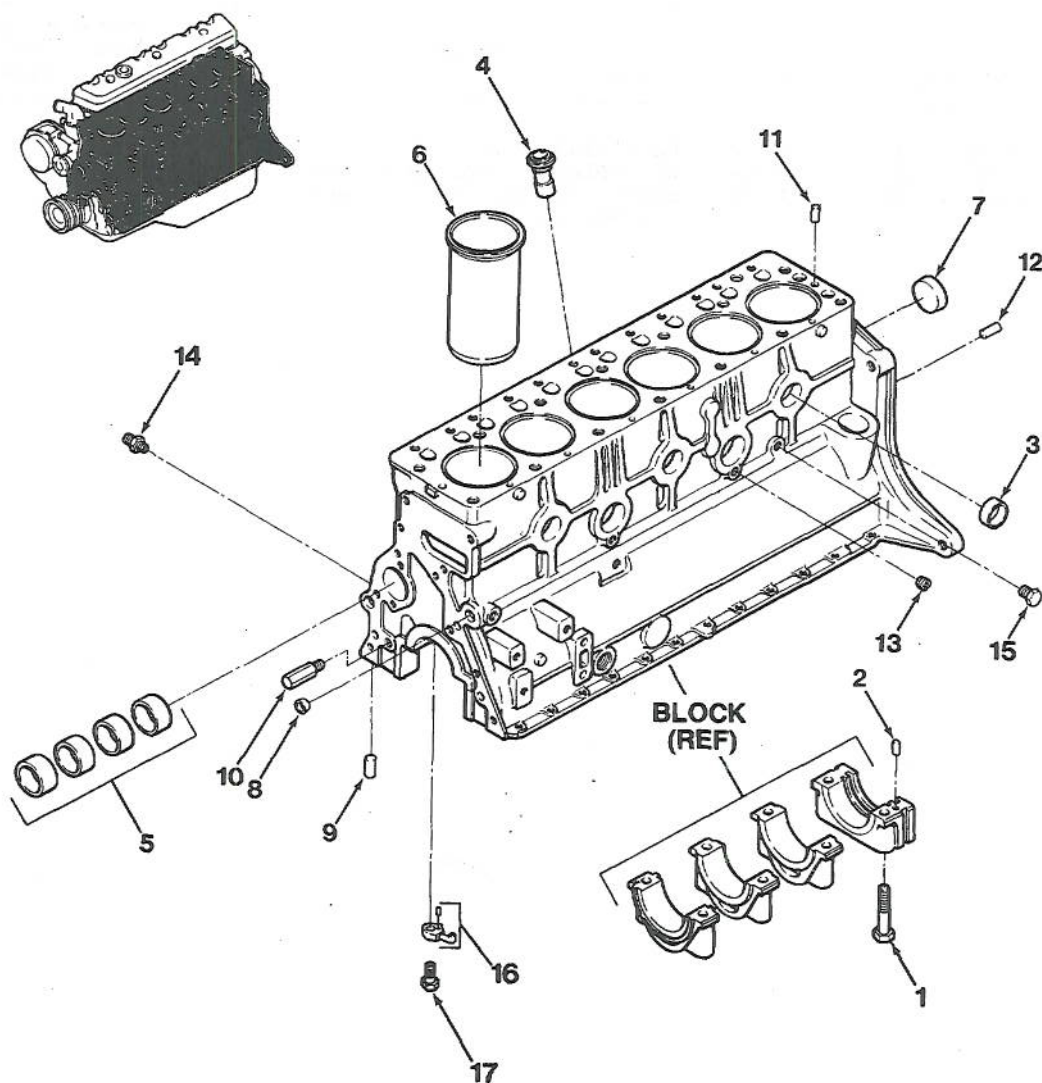


09870B

FIGURE 103. PISTON, CONNECTING ROD AND CRANKSHAFT GROUP

FIG. & INDEX NO.	PART NUMBER	FSCM	1234567	DESCRIPTION	UNITS USABLE PER ASSY.	USABLE ON CODE	SMR CODE
103-	NO NUMBER	S0356		PISTON, CONNECTING ROD AND CRANKSHAFT GROUP (SEE FIGURE 2 FOR NHA)	REF		
	12010-J5312	S0356		PISTON SET (8135233)	6		PAFBZN

FIG. & INDEX NO.	PART NUMBER	FSCM	1234567	DESCRIPTION	UNITS PER ASSY.	USABLE ON CODE	SMR CODE
103-1	12032-37500	S0356		.. RING, RETAINING (8135241)	2		PAFZZN
-2	12024-37501	S0356		.. PIN, PISTON (8135240)	1		PAFZZN
	NO NUMBER	S0356		.. PISTON (NOT SERVICED SEPARATELY)	1		
-3	12033-J2204	S0356		.. RING SET, 6 CYLINDER (8135239)	1		PAFZZN
	12100-37502	S0356		.. ROD ASSEMBLY, CONNECTING (8135235)	6		PAFBZN
-4	12113-37501	S0356		.. NUT, HEX, CONNECTING ROD (8135238)	2		PAFZZN
-5	12109-37502	S0356		.. SCREW, CAP, CONNECTING ROD (8135237)	2		PAFZZN
-6	12030-37500	S0356		.. BUSHING (8135236)	1		PAFZZN
	NO NUMBER	S0356		.. ROD, CONNECTING (NOT SERVICED SEPARATELY)	1		
-7	12117-Y5200	S0356		.. BEARING, CONNECTING ROD, STANDARD SIZE (8135242)	2		PAFZZN
	12117-Y5201	S0356		.. BEARING, CONNECTING ROD, UNDERSIZE 0.25 (8135243)	2		PAFZZN
	12117-Y5202	S0356		.. BEARING, CONNECTING ROD, UNDERSIZE 0.50 (8135244)	2		PAFZZN
	12117-Y5203	S0356		.. BEARING, CONNECTING ROD, UNDERSIZE 0.75 (8135245)	2		PAFZZN
	12117-Y5204	S0356		.. BEARING, CONNECTING ROD, UNDERSIZE 1.0 (8135246)	2		PAFZZN
-8	12200-90063	S0356		.. CRANKSHAFT ASSEMBLY (8135247)	1		PAFFFFP
	12309-61503	S0356		.. NUT, CRANKSHAFT (8135249)	1		PAFZZN
-9	32202-90004	S0356		.. BUSHING (8135248)	1		PAFZZN
	NO NUMBER	S0356		.. CRANKSHAFT (NOT SERVICED SEPARATELY)	1		
-10	12207-61506	S0356		.. BEARING, CRANKSHAFT, STANDARD SIZE (8135250)	1		PAFZZN
	12209-61506	S0356		.. BEARING, CRANKSHAFT, 0.25 UNDER SIZE (8135251)	1		PAFZZN
	12210-61506	S0356		.. BEARING, CRANKSHAFT, 0.50 UNDER SIZE (8135252)	1		PAFZZN
	12211-61506	S0356		.. BEARING, CRANKSHAFT, 0.75 UNDER SIZE (8135253)	1		XBFZZ
	12212-61506	S0356		.. BEARING, CRANKSHAFT, 1.0 UNDER SIZE (8135254)	1		XBFZZ
-11	12281-37502	S0356		.. WASHER, THRUST, UPPER, SIZE A. 2.325 (8135255)	2		PAFZZN
	12281-37503	S0356		.. WASHER, THRUST, UPPER, SIZE B. 2.350 (8135256)	2		PAFZZN
	12281-37504	S0356		.. WASHER, THRUST, UPPER, SIZE C. 2.375 (8135257)	2		PAFZZN
	12318-37502	S0356		.. WASHER, THRUST, UPPER, OVERSIZE, 0.2 MILLIMETER (8135258)	2		PAFZZN
	12320-37502	S0356		.. WASHER, THRUST, UPPER, OVERSIZE, 0.40 MILLIMETER (8135259)	2		PAFZZN
-12	12280-37503	S0356		.. WASHER, THRUST, LOWER, SIZE A. 2.325 (8135260)	2		PAFZZN
	12280-37504	S0356		.. WASHER, THRUST, LOWER, SIZE B. 2.350 (8135261)	2		PAFZZN
	12280-37505	S0356		.. WASHER, THRUST, LOWER, SIZE C. 2.375 (8135262)	2		PAFZZN
	12319-37503	S0356		.. WASHER, THRUST, LOWER, OVERSIZE, 0.20 MILLIMETER (8135263)	2		PAFZZN
	12321-37503	S0356		.. WASHER, THRUST, LOWER, OVERSIZE, 0.40 MILLIMETER (8135264)	2		PAFZZN
-13	12205-76200	S0356		.. KEY, WOODRUFF (8135265)	2		PAFZZN
-14	13021-37501	S0356		.. GEAR, CRANKSHAFT (8135266)	1		PAFZZN

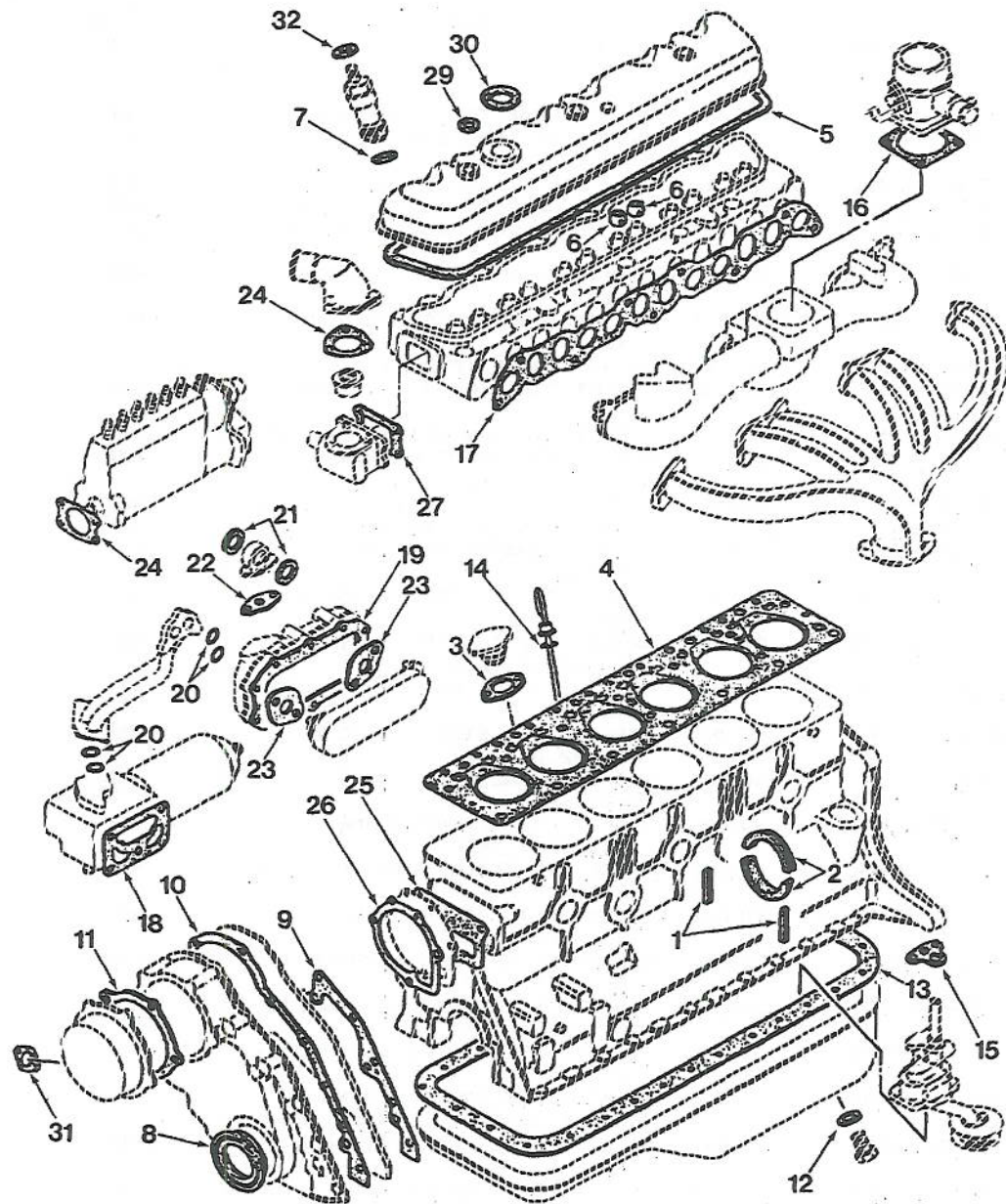


09764B

FIGURE 104. ENGINE BLOCK GROUP

FIG. & INDEX NO.	PART NUMBER	FSCM	1234567	DESCRIPTION	UNITS USABLE PER ASSY.	ON CODE	SMR CODE
104-	NO NUMBER	S0356		ENGINE BLOCK GROUP	REF		
	11009-C6801	S0356		. . BLOCK, ENGINE (8135000).	1		PAFFFP
-1	12293-37501	S0356		. . SCREW, CAP, HEX HEAD, BEARING CAP (8135003)	8		PAFZZN
-2	01522-05104	S0356		. . PIN, STRAIGHT (8135001)	1		PAFZZN
-3	01648-00084	S0356		. . PLUG, WELCH (8135002)	9		PAFZZN
-4	15042-90001	S0356		. . BUSHING, OIL PUMP (8135004)	1		PAFZZN
-5	13002-90010	S0356		. . BUSHING SET, CAMSHAFT (8135005)	1		PAFZZN
-6	11012-76201	S0356		. . LINER, CYLINDER (8135006)	6		PAFZZN
-7	11019-90002	S0356		. . PLUG, WELCH (8135011)	1		XBFZZ
-8	00933-11800	S0356		. . PLUG, WELCH (8135009)	4		XBFZZ
-9	00933-20650	S0356		. . PLUG, BLIND (8135010)	1		PAFZZN
-10	13081-76201	S0356		. . JET, OIL (8135012)	1		PAFZZN
-11	00929-51400	S0356		. . PIN, STRAIGHT (8135008)	2		PAFZZN
-12	30412-P5100	S0356		. . DOWEL, CYLINDER (8135007)	4		PAFZZN
-13	01642-02114	S0356		. . PLUG, SCREW (8135013)	5		PAFZZN
-14	08712-14205	S0356		. . CONNECTOR, STRAIGHT (8135017)	1		PAFZZN

FIG. & INDEX NO.	PART NUMBER	FSCM	1234567	DESCRIPTION	UNITS PER ASSY.	USABLE ON CODE	SMR CODE
104-15	08931-30410	S0356		PLUG (8135015)	1		PAFZZN
-16	12121-Y5201	S0356		JET ASSEMBLY, OIL (8135019)	6		PAFZZN
-17	12123-Z5000	S0356		SCREW ASSEMBLY, CAP, HEX HEAD (8135020)	6		XBFZZ



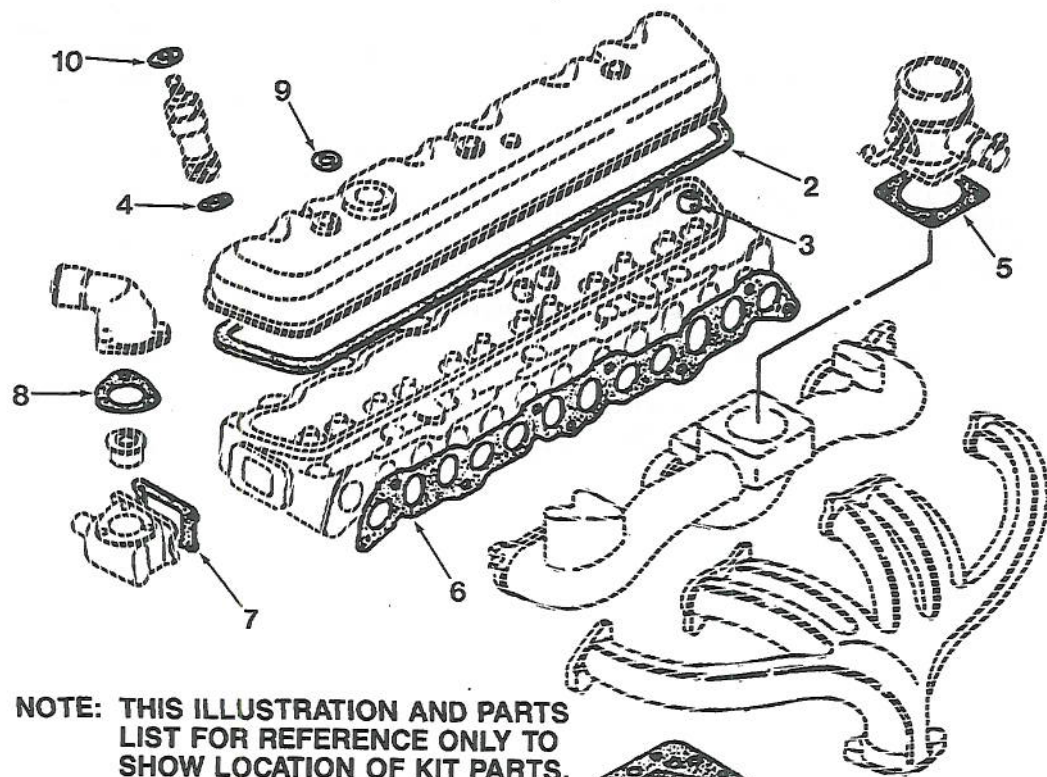
NOTE: THIS ILLUSTRATION AND PARTS LIST FOR REFERENCE ONLY TO SHOW LOCATION OF KIT PARTS.

09798B

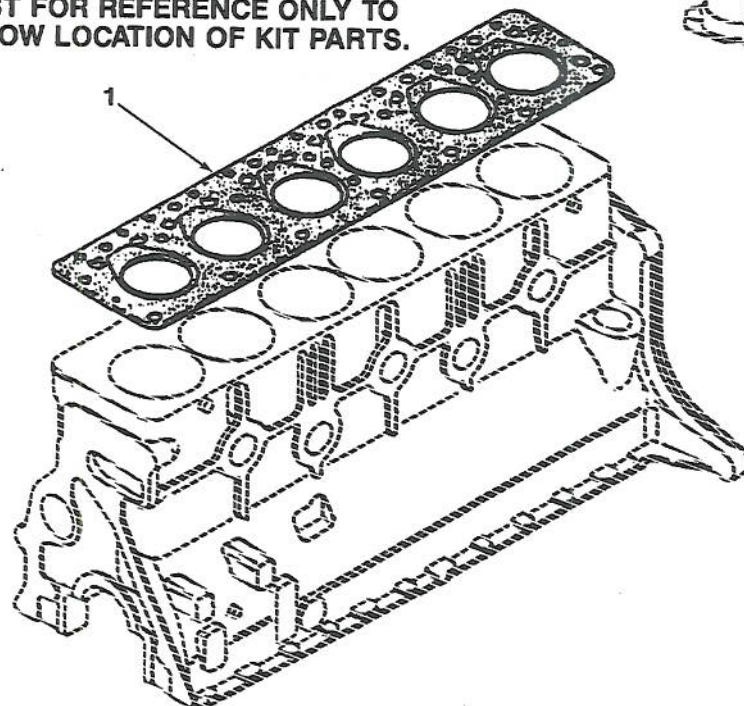
FIGURE 105. ENGINE OVERHAUL KIT

FIG. & INDEX NO.	PART NUMBER	FSCM	1234567	DESCRIPTION	UNITS USABLE PER ASSY.	ON CODE	SMR CODE
105-	10101-29128	S0356		OVERHAUL KIT, ENGINE (8135200). (SEE FIGURE 2 FOR NHA)	REF		
-1	12289-14600	S0356		SEAL, OIL, BEARING CAP (8135201). (K2)	REF		
-2	12279-76200	S0356		SEAL, OIL, BEARING CAP (8135202). (K2)	REF		
-3	22179-90001	S0356		GASKET, SUPPORT (8135203) (K2)	REF		

FIG. & INDEX NO.	PART NUMBER	FSCM	1234567	DESCRIPTION	UNITS	USABLE	SMR CODE
					PER ASSY.	ON CODE	
105-4	11044-61514	S0356		GASKET, HEAD (8135204) (K2)			REF
-5	13270-C6800	S0356		GASKET, ROCKER COVER (8135205) (K2)			REF
-6	13207-C8700	S0356		SEAL, VALVE STEM (8135084) (K2)			REF
-7	16635-J2000	S0356		GASKET, NOZZLE (8135207) (K2)			REF
-8	13043-76200	S0356		SEAL, OIL, FRONT COVER (8135208) (K2)			REF
-9	13037-90002	S0356		GASKET, FRONT PLATE (8135209) (K2)			REF
-10	13041-Y5201	S0356		GASKET, FRONT COVER (8135210) (K2)			REF
-11	13044-Y5201	S0356		GASKET, COVER (8135211) (K2)			REF
-12	11026-61000	S0356		GASKET, DRAIN PLUG (8135212) (K2)			REF
-13	11121-61502	S0356		GASKET, OIL PAN (8135213) (K2)			REF
-14	15147-37500	S0356		RING, GAUGE GUIDE, RUBBER (8135214) (K2)			REF
-15	15066-90007	S0356		GASKET, OIL PUMP (8135215) (K2)			REF
-16	14327-61500	S0356		GASKET, VENTURI (8135216) (K2)			REF
-17	14035-90000	S0356		GASKET, EXHAUST MANIFOLD (8135218) (K2)			REF
-18	15239-V1700	S0356		GASKET, OIL FILTER (8135220) (K2)			REF
-19	21307-61520	S0356		GASKET, OIL COOLER HOUSING (8135221) (K2)			REF
-20	21306-61520	S0356		RING, OIL PIPE RUBBER (8135222) (K2)			REF
-21	21331-76201	S0356		GASKET, HEAD SIDE CONNECTOR (8135223) (K2)			REF
-22	21310-90011	S0356		GASKET, CONNECTOR (8135224) (K2)			REF
-23	21303-61520	S0356		GASKET, OIL COOLER ELEMENT (8135225) (K2)			REF
-24	16701-37504	S0356		GASKET, INJECTOR PUMP (8135226) (K2)			REF
-25	21074-37502	S0356		GASKET, WATER PUMP COVER (8135227) (K2)			REF
-26	21014-61503	S0356		GASKET, WATER PUMP HOUSING (8135228) (K2)			REF
-27	11045-76201	S0356		GASKET, THERMOSTAT HOUSING (8135229) (K2)			REF
-28	11062-L6000	S0356		GASKET, WATER OUTLET (8135230) (K2)			REF
-29	15266-C6800	S0356		PACKING, PREFORMED, O-RING, ROCKER COVER (8135435) (K2)			REF
-30	15270-78500	S0356		GASKET, FILLER CAP (8135436) (K2)			REF
-31	13044-J2001	S0356		GASKET, FRONT COVER SIDE (8135437) (K2)			REF
-32	16635-J5570	S0356		GASKET, SPILL TUBE (8135438) (K2)			REF



NOTE: THIS ILLUSTRATION AND PARTS LIST FOR REFERENCE ONLY TO SHOW LOCATION OF KIT PARTS.

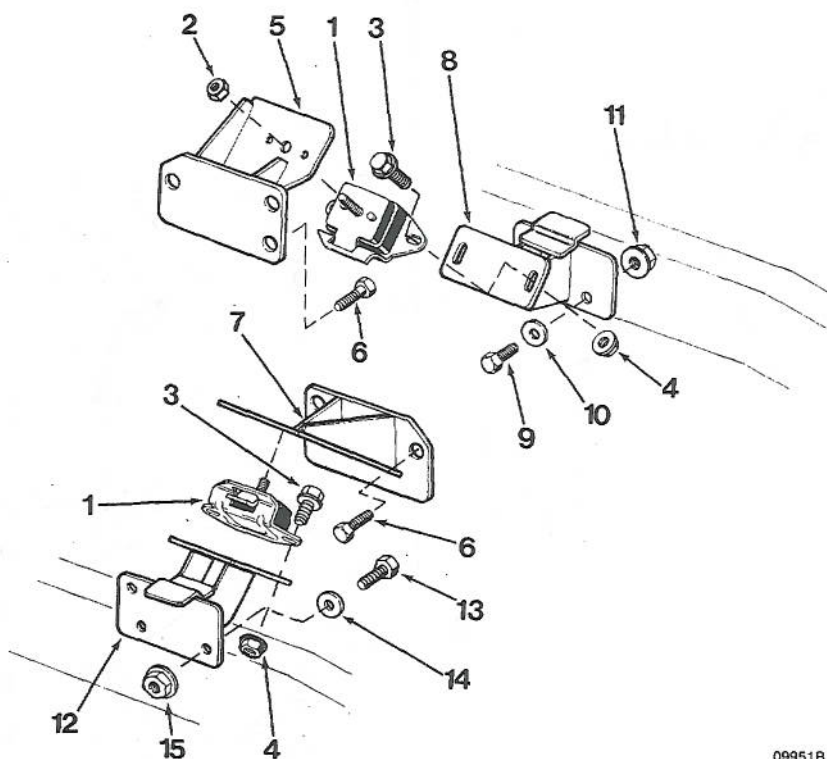
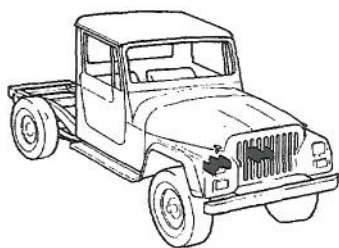


09799B

FIGURE 106. ENGINE GASKET KIT

FIG. & INDEX NO.	PART NUMBER	FSCM	1234567	DESCRIPTION	UNITS PER ASSY.	USABLE ON CODE	SMR CODE
106-	10103-29129	S0356		GASKET KIT, ENGINE (8135231).	REF		
-1	11044-61514	S0356		. GASKET, HEAD (8135204) (K1).	REF		

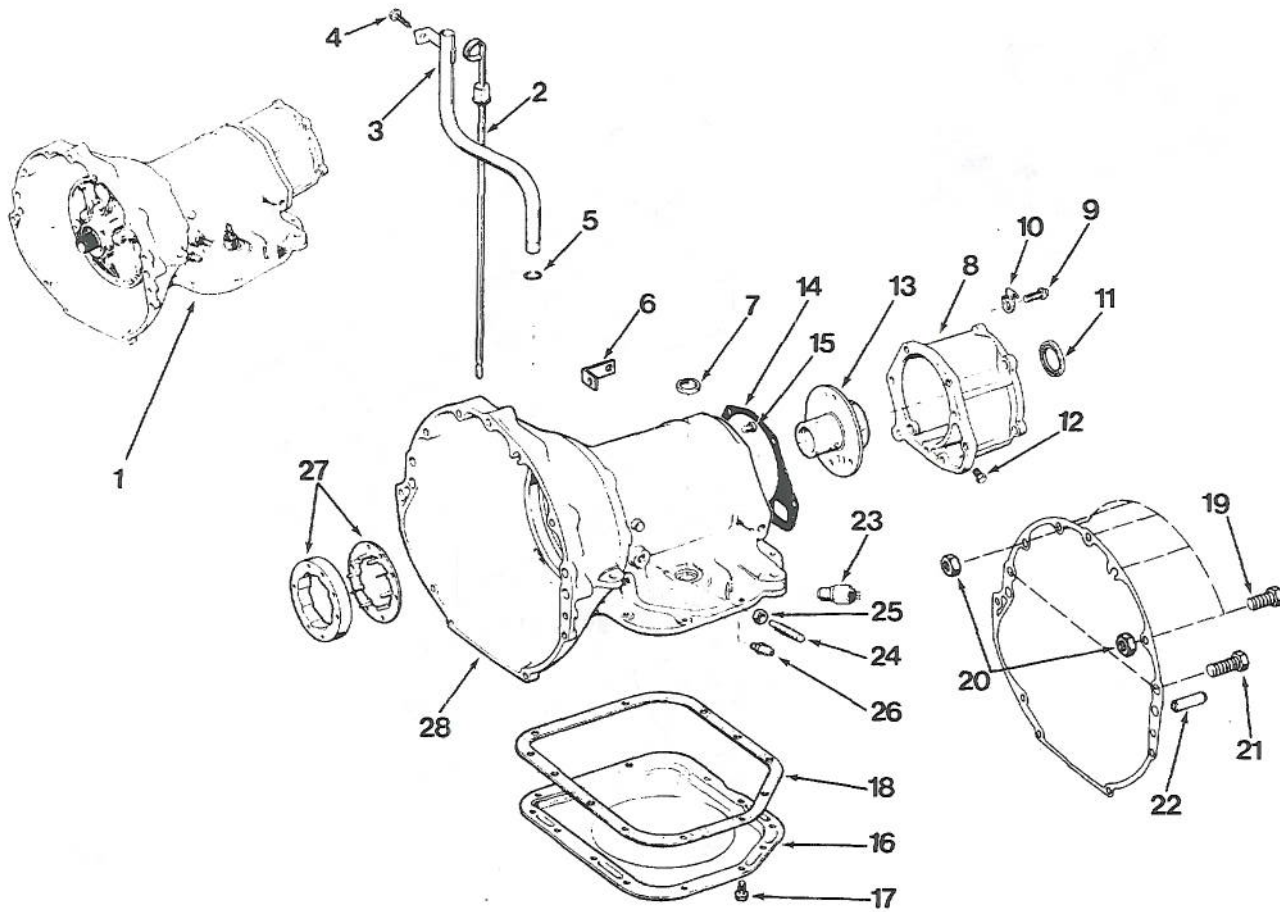
FIG. & INDEX NO.	PART NUMBER	FSCM	1234567	DESCRIPTION	UNITS PER ASSY.	USABLE ON CODE	SMR CODE
106-2	13270-C6800	S0356		GASKET, ROCKER COVER (8135205) (K1)	REF		
-3	13207-C8700	S0356		SEAL, VALVE STEM (8135084) (K1)	REF		
-4	16635-J2000	S0356		GASKET, NOZZLE (8135207) (K1)	REF		
-5	14327-61500	S0356		GASKET, VENTURI (8135216) (K1)	REF		
-6	14035-90000	S0356		GASKET, EXHAUST MANIFOLD (8135218) (K1)	REF		
-7	11045-76201	S0356		GASKET, THERMOSTAT HOUSING (8135229) (K1)	REF		
-8	11062-L6000	S0356		GASKET, WATER OUTLET (8135230) (K1)	REF		
-9	15266-C6800	S0356		PACKING, PREFORMED, O-RING, ROCKER COVER (8135435) (K1)	REF		
-10	16635-J5570	S0356		GASKET, SPILL TUBE (8135438) (K1)	REF		



09951B

FIGURE 107. FRONT ENGINE MOUNTS GROUP

FIG. & INDEX NO.	PART NUMBER	FSCM	1234967	DESCRIPTION	UNITS USABLE PER ASSY.	ON CODE	SMR CODE
107-	NO NUMBER	92871		FRONT ENGINE MOUNTS GROUP. (SEE FIGURE 2 FOR NHA)		REF	
-1	8128488	92871		. PAD, MOUNTING.	2		PAFZZN
-2	4003975	92871		. NUT, HEX, LOCKING (AP).	2		XBFZZ
-3	6273773	92871		. BOLT, SELF-LOCKING (273773). (AP)	2		XBFZZ
-4	4003909	92871		. NUT, HEX, FLANGED (AP).	2		PAFZZN
-5	11232-90000	80356		. BRACKET, MOUNTING, LEFT HAND. (8135466)	1		XBFZZ
-6	08121-22528	80356		. SCREW AND WASHER (8135468). (AP)	3		XBFZZ
-7	11233-90002	80356		. BRACKET, MOUNTING, RIGHT HAND (8135467)	1		XBFZZ
-8	8135529	92871		. MOUNT ASSEMBLY, FRONT, LEFT HAND.	1		XBFZZ
-9	4005665	92871		. SCREW, CAP, HEX HEAD, 1 INCH LONG. (AP)	4		PAFZZN
	69421204	92871		. SCREW, CAP, HEX HEAD, 3 INCH LONG. (9421204) (AP)	4		XBFZZ
-10	69419871	92871		. WASHER, LOCK (9419871) (AP).	4		XBFZZ
-11	4003909	92871		. NUT, HEX, FLANGED (AP).	4		PAFZZN
-12	8135600	92871		. MOUNT ASSEMBLY, FRONT, RIGHT. HAND	1		XBFZZ
-13	4005665	92871		. SCREW, CAP, HEX HEAD, 1 INCH LONG. (AP)	4		PAFZZN
	69421204	92871		. SCREW, CAP, HEX HEAD, 3 INCH LONG. (9421204) (AP)	4		XBFZZ
-14	69419871	92871		. WASHER, LOCK (9419871) (AP).	4		XBFZZ
-15	4003909	92871		. NUT, HEX, FLANGED (AP).	4		PAFZZN

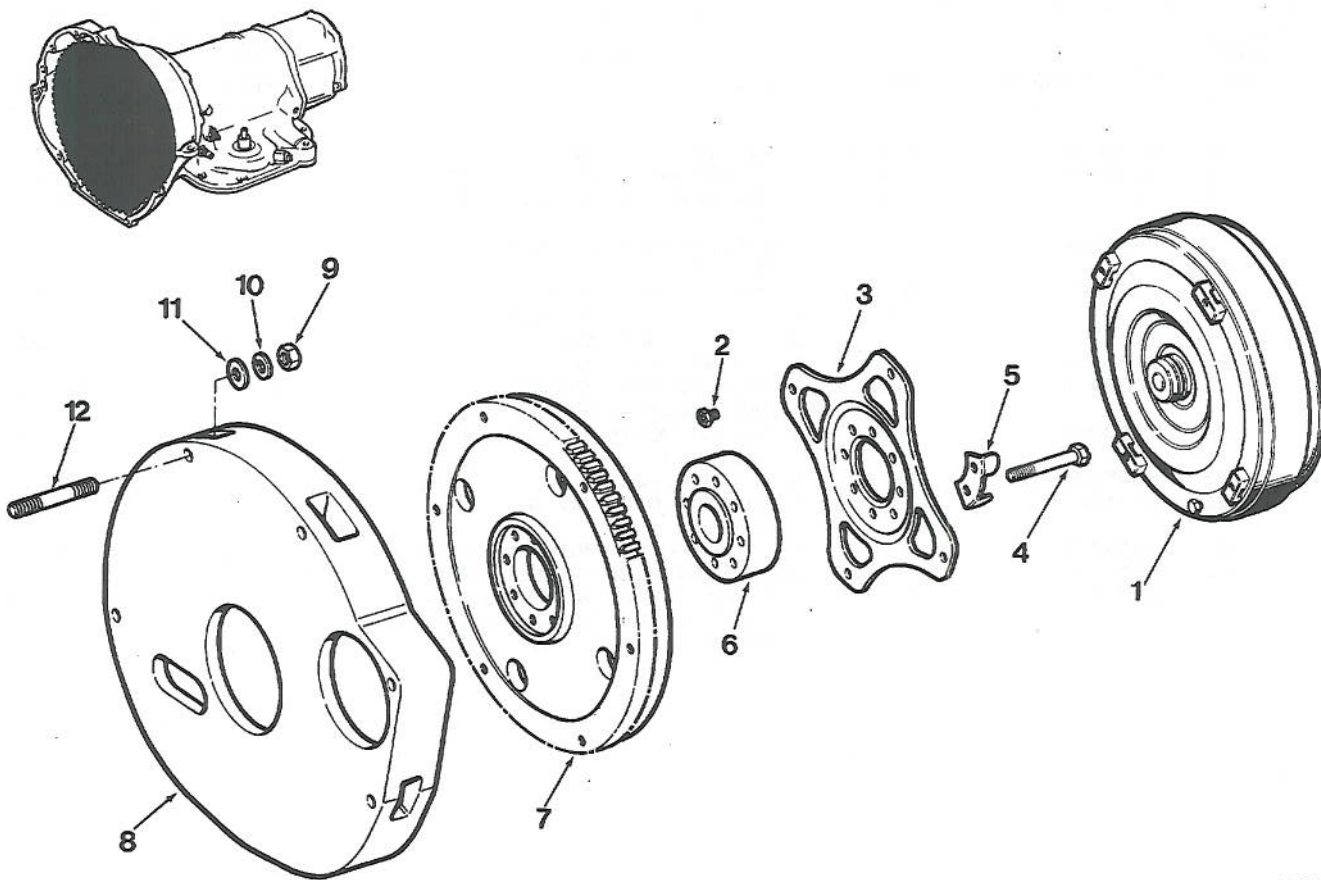


099498

FIGURE 108. TRANSMISSION ASSEMBLY AND CASE ASSEMBLY GROUP

FIG. & INDEX NO.	PART NUMBER	FSCM	1234567	DESCRIPTION	UNITS PER ASSY.	USABLE ON CODE	SMR CODE
108-	NO NUMBER	92871		TRANSMISSION ASSEMBLY AND CASE ASSEMBLY GROUP (PARTS KIT AVAILABLE) (SEE FIGURE 2 FOR NHA)	REF		
-1	3836058	86403		TRANSMISSION ASSEMBLY, MODEL A727 (8993000026)	1		PBFFFP
-2	5363757	92871		GAGE ROD, DIPSTICK	1		XBFFZZ
-3	8993000048	92871		TUBE, OIL FILLER	1		XBFFZZ
-4	89426241	92871		SCREW, CAP, HEX WSHR (9426241) (AP)	1		PAFFZZN
-5	940298	92871		PACKING, PREFORMED, TUBE, OIL FILLER	1		XBFFZZ
-6	5994391	92871		BRACKET, CLIP, VENT LINE	1		XBFFZZ
-7	3878447	86403		SEAL, SHAFT, MANUAL VALVE (8128797) (K3)	1		XBFFZZ
-8	4269957	86403		ADAPTER, XMSN (8134761)	1		XBFFZZ
-9	6030849	86403		SCREW AND WASHER (8132505) (AP)	6		XBFFZZ
-10	8121160	92871		CLIP, WIRING	1		XBFFZZ
-11	4269958	86403		SEAL, ADAPTER (8134680) (K3)	1		XBFFZZ
-12	6028095	93334		PLUG, PIPE (8120840)	1		XBFFZZ
-13	2466882	86403		SUPPORT, OUTPUT SHAFT (8120842)	1		XBFFZZ
-14	2466954	93334		GASKET, EXTENSION (8120979) (K3)	1		XBFFZZ

FIG. & INDEX NO.	PART NUMBER	FSCM	1234567	DESCRIPTION	UNITS PER ASSY.	USABLE ON CODE	SMR CODE
108-15	6028095	93334		PLUG, PIPE (812084)	1		
-16	4058997	86403		PAN, TRANSMISSION OIL (8128965)	1		XBFZZ
-17	6023355	93334		SCREW AND WASHER (8121145) (AP)	14		XBFZZ
-18	2644324	93334		GASKET, TRANSMISSION PAN (8120984) (K3)	1		PAFZZN
-19	4001885	92871		SCREW, CAP, HEX HEAD	5		XBFZZ
-20	6219422	92871		NUT, HEX, THICK (219422)	2		XBFZZ
-21	4004370	92871		SCREW, CAP, HEX HEAD	2		XBFZZ
-22	6141281	92871		PIN, DOWEL (141281)	2		XBFZZ
-23	3232844	92871		SWITCH, NEUTRAL SAFETY (SEE FIGURE 60-7)	REF		PAFZZN
-24	2400389	93334		SCREW, ADJUSTING, KICKDOWN BAND (8121086)	1		XBFZZ
-25	MS35691-37	96906		NUT, PLAIN, HEX	1		XBFZZ
-26	6031621	86403		CONNECTOR, OIL COOLER TUBE (8132511)	2		XBFZZ
-27	8122438	92871		KIT, CLUTCH OVERRUNNING (K29)	1		XBFZZ
-28	4058527	86403		CASE, TRANSMISSION (8983501544)	1		XA
	8134763	92871		KIT, TRANSMISSION OVERHAUL (INCLUDES PARTS LISTED ABOVE DENOTED BY K3) (K3)	1		PAFZZN



099049

FIGURE 109. TORQUE CONVERTER GROUP

FIG. & INDEX NO.	PART NUMBER	FSCM	1234567	DESCRIPTION	UNITS PER ASSY.	USABLE ON CODE	SMR CODE
109-	NO NUMBER	92871		TORQUE CONVERTER GROUP	REF		
-1	8993000042	92871		. CONVERTER, TORQUE.	1		PBFFFP
-2	3214097	92871		. BOLT, DRIVE PLATE TO CONVERTOR (AP)	4		XBFZZ
-3	8993000035	92871		. PLATE, DRIVE	1		XBFZZ
-4	8993000040	92871		. BOLT, DRIVE PLATE TO FLYWHEEL (AP)	8		XBFZZ
-5	8993000041	92871		. PLATE, LOCK, FLYWHEEL BOLT (AP)	4		XBFZZ
-6	8993000032	92871		. ADAPTER, FLYWHEEL.	1		XBFZZ
-7	12310-90167	80356		. FLYWHEEL ASSEMBLY (SEE FIGURE 102-5) (8993000033)	REF		PAFBZN
-8	8993000034	92871		. HOUSING, FLYWHEEL.	1		XBFZZ
-9	8993000037	92871		. NUT, HEX (AP).	4		XBFZZ
-10	8993000038	92871		. WASHER, LOCK (AP).	4		XBFZZ
-11	8993000039	92871		. WASHER, FLAT (AP).	4		XBFZZ
-12	8993000036	92871		. STUD, MOUNTING (AP).	4		XBFZZ