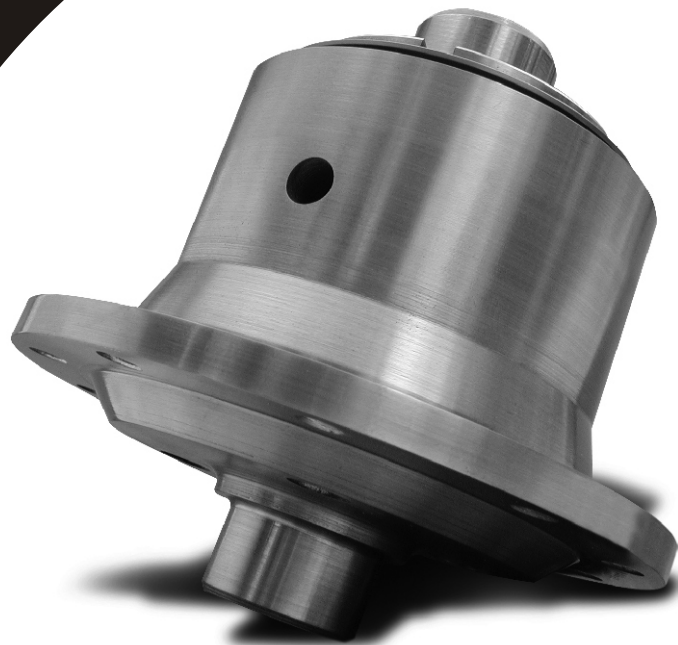


# *Detroit* **ELECTRAC**<sup>®</sup>

**Legendary Traction**  
**Smooth Operation**  
***One Differential!***



**Limited Slip to Locker**  
**with the Push of a Button!**



*Detroit* **ELECTRAC**<sup>®</sup>

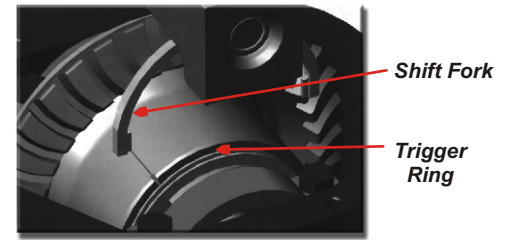
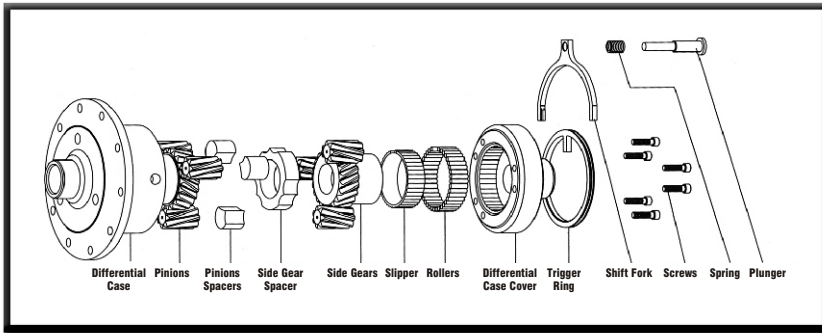
# It's ELECTRIFYING!

The Detroit Electrac functions as a heavy-duty limited slip differential and a driver-activated fully locked performance differential.

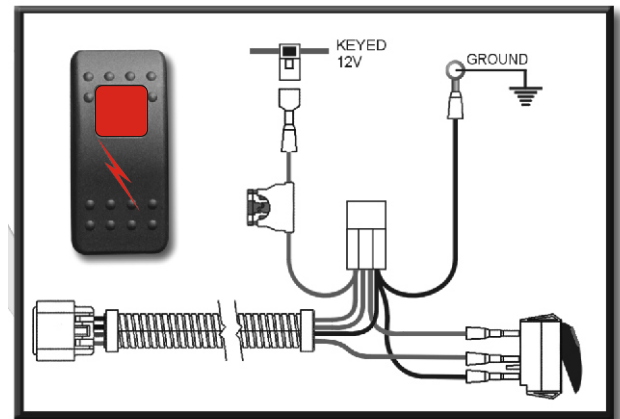
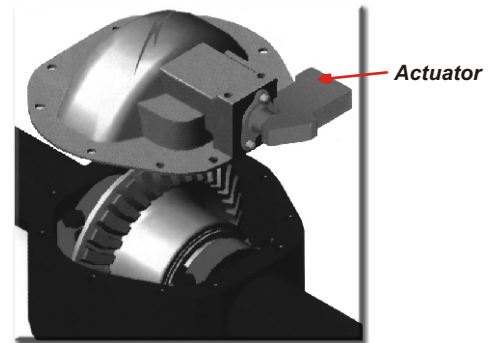
With a simple push of the dash mounted button, the Detroit Electrac becomes a 100% locked differential. When activated, the unit provides maximum traction for off-road or high performance operation.

When not activated, the Detroit Electrac provides the traction of a high performance limited slip differential. As a limited slip differential, the Detroit Electrac offers continuous torque biased traction with the flexibility to operate effectively in a wide variety of both normal and performance driving conditions.

Detroit Electrac is a differential that delivers options unlike any other.



The Detroit Electrac's shift fork engages the trigger ring to either lock or unlock the unit.



The Detroit Electrac is designed for vehicles with a 12-volt, negative ground electrical system. A wiring harness, ground wire and switch are provided with the Detroit Electrac.

- ⚡ **High Performance Limited Slip**
- ⚡ **Easily Engaged via Dash Button**
- ⚡ **Full Traction when Locked**
- ⚡ **Shift on the Fly**
- ⚡ **Front or Rear Applications**
- ⚡ **Maintenance Free**
- ⚡ **One Year Warranty**



© Detroit Electrac is a registered trademark of Tractech, Inc.



800-328-3850 • [www.tractech.com](http://www.tractech.com)

Tractech Inc. • 11445 Stephens Drive • Warren, MI 48089