

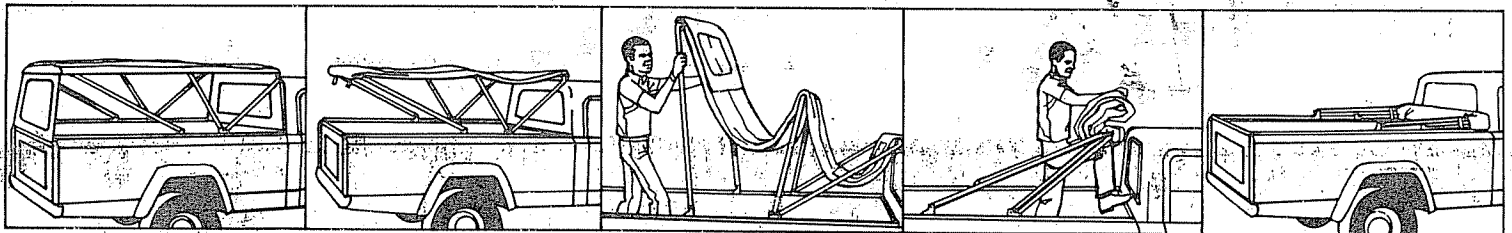
INSTALLATION INSTRUCTIONS
FOR
"WHITCO" CONVERTIBLE PICKUP TOPS

Model 908
For
'Long' Wheelbase
"Jeep" Trucks

Model 907
For
'Short' Wheelbase
"Jeep" Trucks

You can put your WHITCO top down in 2 minutes.

- | | | | | |
|--|--|--|---|---|
| <p>Step 1. Open all zippers. Unsnap both side curtains and lay curtains as far as possible.</p> | <p>Step 2. Unsnap rear and front curtains and lay curtains on top as far as possible.</p> | <p>Step 3. Telescope front bow down. While standing in pickup bed, fold rear bow forward allowing top to fold between bows.</p> | <p>Step 4. Lower front telescoping bow and fold all bows forward. Wrap top fabric up and over bows toward cab. Then fold entire top down in final down position.</p> | <p>Step 5. Fasten side hold-down straps. A top boot (optional accessory) is recommended for protection on converted top. If boot is used, fasten side straps after boot is put in place.</p> |
|--|--|--|---|---|



You can put your WHITCO top up in 2 minutes.

- Step 1.** Unsnap side straps. **Step 2.** Pull rear bow fully back and position center bow support brace. **Step 3.** Telescope front bow to open position. Lower front curtain and snap in place. **Step 4.** Lower rear curtain but do not snap in place. Lower either side curtain and zip front zipper. Snap front corner snaps first, then rear corner snaps. Then snap all remaining side snaps. Repeat procedure with other side curtain. **Step 5.** Zip rear curtain and snap in position.

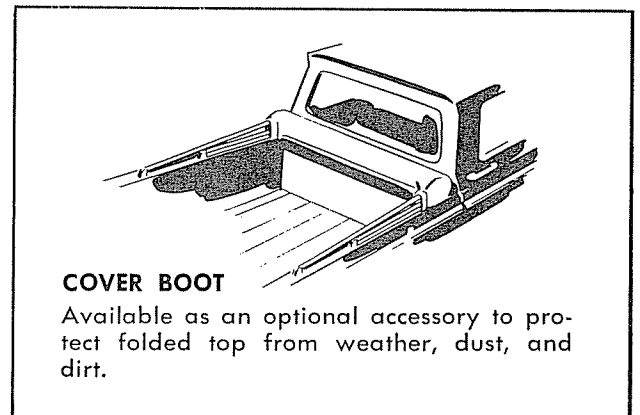
CARE AND MAINTENANCE OF TOP

Wash your top frequently using a non-detergent soap, a soft bristle brush, and plenty of water. Don't be afraid to really scrub the material, but keep your brush off the windows—they will scratch. Don't spare the water when rinsing the top as "left-in" soap will tend to yellow any material.

Should you accidentally scratch your vinyl windows—scratch removal compounds are available and can be purchased from your local automotive parts supply dealer.

CAUTION:

Like many materials the fabric on WHITCO tops contract in extremely cold weather. The fabric will become more taut than usual. Extra care should be taken during installation and putting top up or down. If possible, this should be done in a warm enclosure. See Back Page.



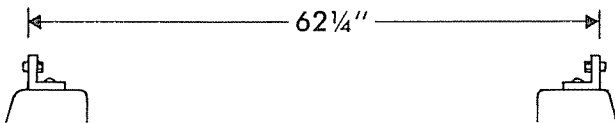
COVER BOOT

Available as an optional accessory to protect folded top from weather, dust, and dirt.

READ THRU ONCE BEFORE STARTING INSTALLATION

INSTALLATION INSTRUCTIONS FOR

1. Install the #10-32 x 1/4" studs, lockwashers, and nuts, Nos. 64, 69 and 66 respectively, in slotted holes in the five aluminum rails. Do not tighten nuts until Step 14. NOTE: Front rail studs are installed on inside of rail while side rail studs are on outside. SEE FIGURE 1.
2. Center No. 152 front rail on top of front bulkhead of truck bed (studs facing to rear) and flush with forward edge of bulkhead. Using holes in rail as templates, drill 5/32" diameter through top surface of bulkhead and secure rail using No. 60, #10 x 1/2" self-tapping screws.
3. Position No. 153-L left front and No. 153-R right front rails (identified by 3" x 1/4" notch in middle of rails) on top flange of side panels so that curved ends are even with and touching front rail ends. SEE FIGURE 1. This should place side rails 62 1/4" apart (measured from outside edge to outside edge).



This distance must be maintained, front to rear, to assure that rails are parallel. Using holes in rails as templates, drill 5/32" diameter through top surface of side panels and secure rails using #10 x 1/2" self-tapping screws. NOTE: In hole shown, SEE FIGURE 1, attach No. 158 hold-down-strap to each rail using a #8 x 5/8" self-tapping stud.

On 1973 Jeep Trucks, the tailgate has been widened with the result that the tailgate extends under the rear corners of rails No. 154-L and 154-R by approximately 1 1/4". This means that the last screw hole in the rails cannot be used. Drill a 3/16" hole through the rails in the last seration before the tailgate opening. Then proceed with Step 4.

4. Position and install No. 154-L left rear and No. 154-R right rear rails using #10 x 1/2" self-tapping screws as in Step 3. Butt notched ends against rear of front rails. Maintain the 62 1/4" dimension.

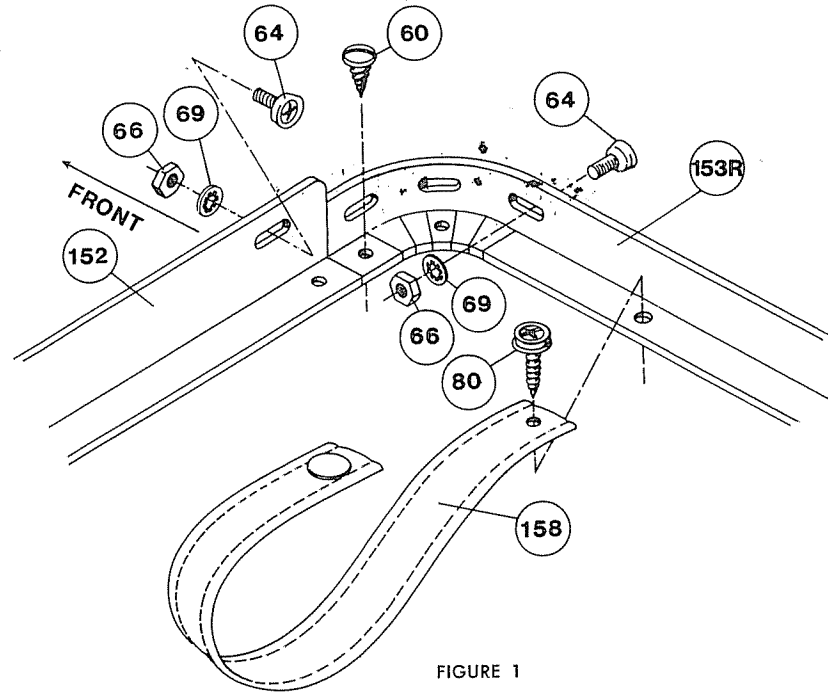


FIGURE 1

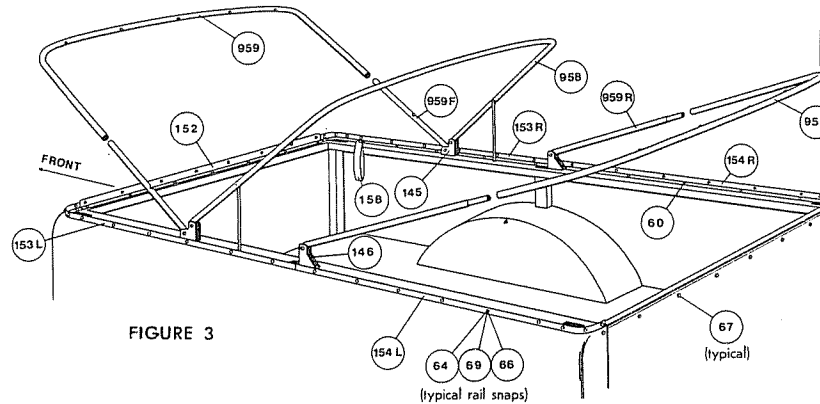


FIGURE 3

5. Position No. 145 front-bow-mounting-brackets, with lower step forward, in 3" x 1/4" slots provided in middle of each front-side-rail. SEE FIGURE 2. Using holes in base of bracket as a guide, drill 3/16" diameter holes through top surface of side panel and secure using #14 x 1/2" self-tapping screws.
6. Position and mount No. 146 rear-bow-mounting brackets as in Step 5, using notches at forward end of rear-side-rails. Place straight edge of bracket forward.

NOTE: It is normal for a top to contract a few days after installation on vehicle.

PARTS LIST

Illustration No.	Description	Model No. 908 Convertible Top For Long Wheelbase Jeep Truck			Model No. 907 Convertible Top For Short Wheelbase Jeep Truck		
		Quan.	Jeep Part No.	Whitco No.	Quan.	Jeep Part No.	Whitco No.
957	Top-Cover-Assembly-White	1	8123507-R	FRGT958-1	1	8123506-R	FRGT957-1
152	Rail-Front	1	SE2 074 202	142	1	SE2 074 181	152
153-L	Rail-Front Side-Left	1	SE2 074 203	143-L	1	SE2 074 182	153 - L
153-R	Rail-Front Side-Right	1	SE2 074 204	143-R	1	SE2 074 183	153 - R
154-L	RailRear Side-Left	1	SE2 074 205	144-L	1	SE2 074 184	154 - L
154-R	Rail-Rear Side-Right	1	SE2 074 206	144-R	1	SE2 074 185	154 - R
959	Front or Rear-Bow	2	SE2 074 207	949	2	SE2 074 192	959
958	Center-Bow	1	SE2 074 208	948	1	SE2 074 193	958
959-F	Front-Bow-Extension	2	SE2 074 209	949-F	2	SE2 074 194	959 - F
959-R	Rear-Bow-Extension	2	SE2 074 210	949-R	2	SE2 074 195	959 - R
145	Front-Bow-Mounting-Bracket	2	SE2 074 190	145	2	SE2 074 190	145
146	Rear-Bow-Mounting-Bracket	2	SE2 074 191	146	2	SE2 074 191	146
157	Rear-Bow-Covers-White	2	8123508-R	FR147-1	2	8123509-R	FR157-1
158	Hold Down Straps	2	SE2 074 199	158	2	SE2 074 199	158
64	#10-32x5/16" Stud	46	SE2 074 033	64	42	SE2 074 033	64
69	#10 Lockwasher	46	SE2 074 036	69	42	SE2 074 036	69
66	#10-32 Hex Nut	46	SE2 074 035	66	42	SE2 074 035	66
60	#10x1/2" Self-Tapping Screw	35	SE2 074 029	60	35	SE2 074 029	60
68	#8x3/8" Self-Tapping Screw	2	SE2 074 038	68	2	SE2 074 038	68
59	#14x1/2" Self-Tapping Screw	8	8123598	59	8	8123598	59
80	#9x5/8" Self-Tapping Stud	2	SE2 083 030	80	2	SE2 083 030	80
67	#8x3/8" Self-Tapping Stud	9	SE2 074 037	67	9	SE2 074 037	67
141	1/4" Spacer Washer	4	SE2 074 189	141	4	SE2 074 189	141
229	1/4"x1 1/4" Grooved Pivot-Pin	6	8123599	229	6	8123599	229
230	Retaining Snap Ring	7	SE2 077 031	230	7	SE2 077 031	230

Manufactured by WHITE AUTOMOTIVE CORP., Colorado Springs, Colo. 80907
For service and replacement parts, see your authorized 'JEEP' dealer

PROPER TEMPERATURE: For ease in installation, it is important that tops be installed where the temperature is above 70 degrees F. Below this temperature, the tops will contract an inch or more, which makes snapping the top down difficult. If the work area temperature is below 70 degrees F, the top should be artificially heated. Place the top on the bows and close all zippers. Then place a small electric heater under the top. (A 1500 — 2000 watt heater is sufficient). As the fabric warms, the top can then gradually be pulled down and snapped in place.

HITCO" CONVERTIBLE PICKUP TOP

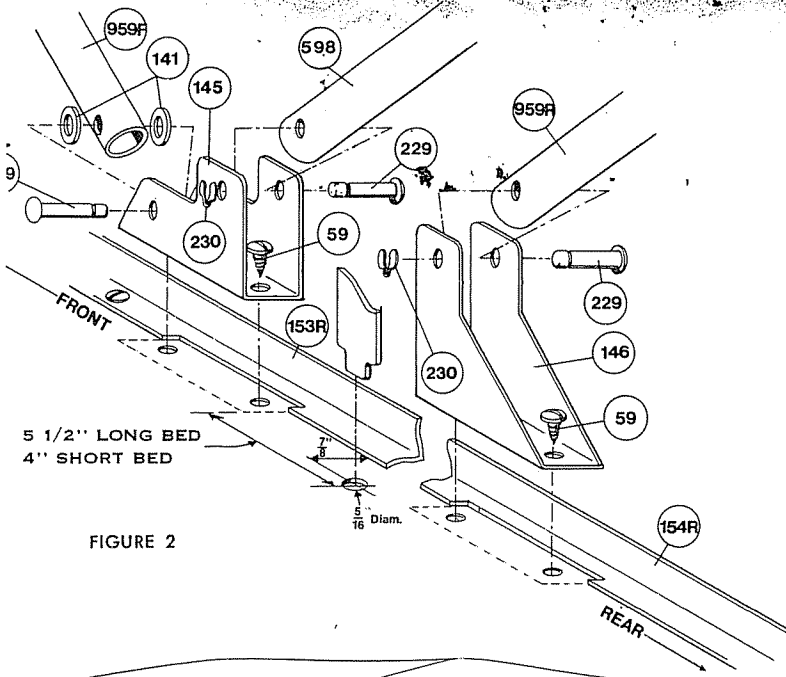


FIGURE 2

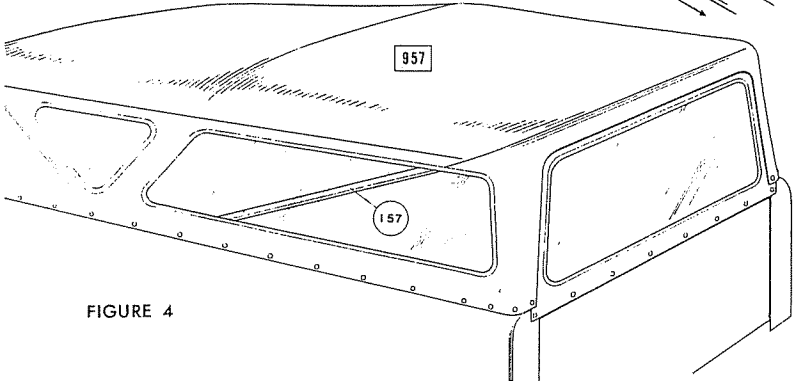


FIGURE 4

7. Attach No. 959-F front-bow-extensions ($\frac{3}{4}$ " diameter), with telescoping release buttons facing upward, to lower set of holes in each front-bow-mounting bracket using No. 229 grooved-pivot-pins and No. 230 retaining-snap-rings. Insert pins with heads toward inside of vehicle and place one No. 141 washer on each side of bow-extension and inside mounting-bracket. SEE FIGURE 2. Slide ends of front-bow (either short bow) over telescoping sections attached to front-bow-mounting-brackets.
8. Attach No. 959-R rear-bow-extensions (1" diameter with reduced end) to rear-bow-mounting brackets using grooved pivot-pins and snap-rings. Insert pins with heads toward outside of vehicle.

9. Slide No. 157 rear-bow-covers on rear-bow (remaining short bow) so that both bow ends are exposed. Slide rear-bow on rear-bow-extensions. Place a piece of wood against each corner of bow and tap with hammer until bow is firmly seated on extensions. Secure by drilling $\frac{1}{8}$ " diameter hole, from inside of vehicle, one inch up from each end of bow and install #8 x $\frac{3}{8}$ " self-tapping screws. Pull bow covers down to rear-bow-mounting-brackets.

10. Measure $5\frac{1}{2}$ " long (long bed vehicles) or 4" (short bed vehicles) back from front-bow-mounting bracket and $\frac{7}{8}$ " in from inner edge of left and right front rails: drill a $\frac{5}{16}$ " diameter hole through the top of each side panel. SEE FIGURE 2.

11. Insert No. 958 center-bow through bow loops in top-cover. Attach center-bow to front-bow-mounting brackets using pivot-pins and snap rings. Insert pin with head toward outside of vehicles. Insert bow-support-rods (attached to center-bow) in holes drilled in Step 10.

12. Lay ends of top-cover over front and rear-bows. Fasten short bow straps to studs attached to bows.

13. Snap front curtain and front corners only of side curtains.

14. Snap rear corner snaps of side curtains by a slow, steady downward pull on rear bow until snaps and studs line up. Close front and rear zippers and fasten all remaining side curtain snaps. After studs have been positioned in slotted holes, tighten one at a time.

15. Pull rear curtain down firmly -- locate, mark and drill $\frac{1}{8}$ " diameter holes in tail-gate and install #8 x $\frac{3}{8}$ " self-tapping studs to mate with snaps in rear curtain. Work out from center.

dryly and wrinkle when stored for a period of time. Relax and the wrinkles will disappear within

LEAVE IN VEHICLE WHEN COMPLETE