



How to Dual Boot a Dell Laptop to use Microsoft & Linux

prepared by
John Meister
April 2006

To Dual Boot

Objective: Identify the steps to dual boot a Dell Latitude D510

Purpose: To enhance technical experience by using Windows XP & SUSE 10.0 on the same laptop

Process: easy as 1-2-3

- 1) Obtain SUSE 10.0 CDs (5)
- 2) Insert CD, reboot, press F12, select Installation, choose components, install
- 3) Configure system and enjoy

Questions?




additional information available at
wagoneers.com or

<http://tech-meister.com/CS/LINUX/DualBootLaptop.pdf>







the following are details
not covered in the initial
presentation

Obtain SUSE 10.0

- 1) Download SUSE 10.0 isos, burn images to CDs (5)

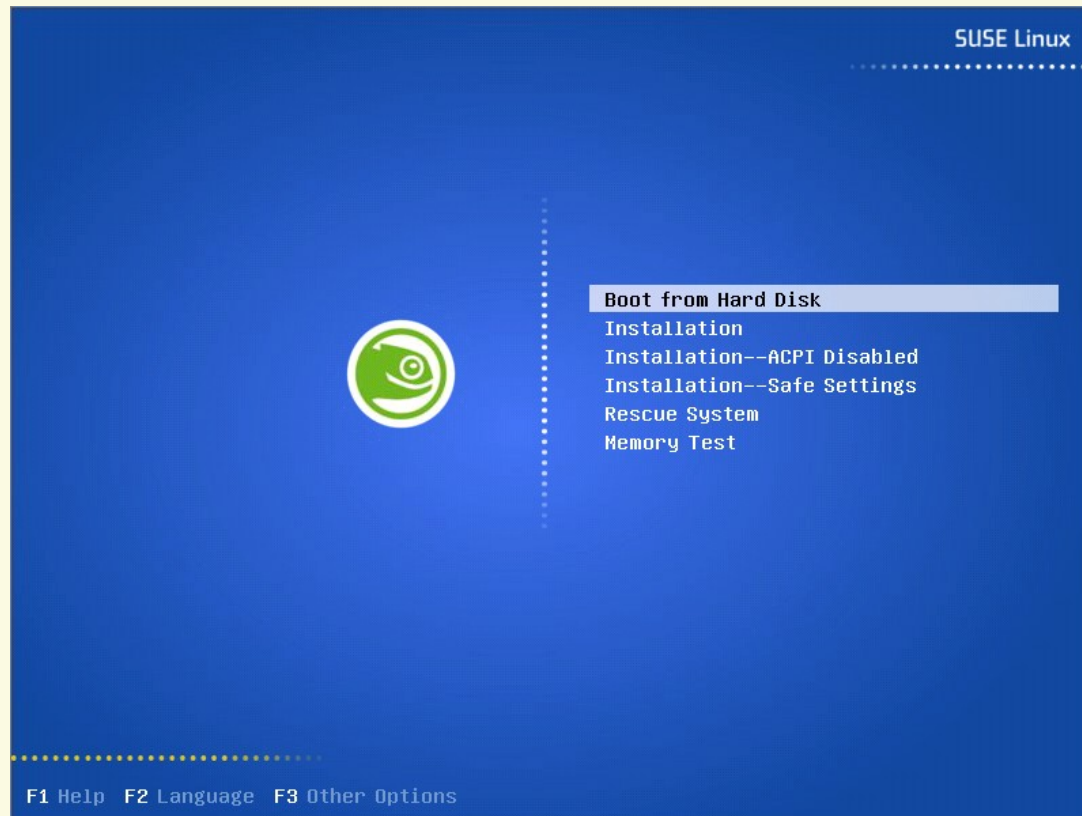
http://en.opensuse.org/Making_a_DVD_from_CDs

- 3) Borrow a set from a friend, foe or fellow student
- 4) Optional: Buy CD/DVDs – on line, ebay, Fry's or Amazon.com:

<http://www.amazon.com/gp/search/103-5265089-3741411?search-alias=aps&keywords=SUSE>

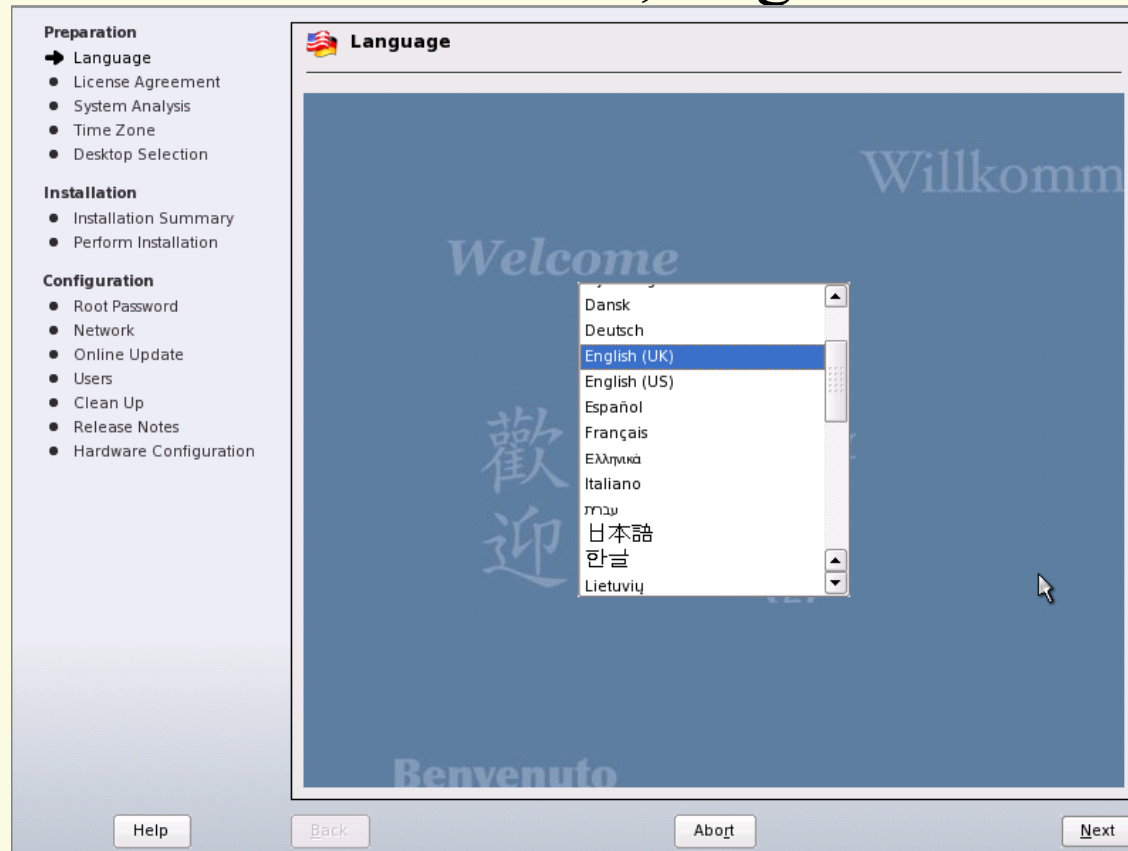
Installation Process – 1

- ✓ Insert CD #1, reboot Dell, press F12, select installation



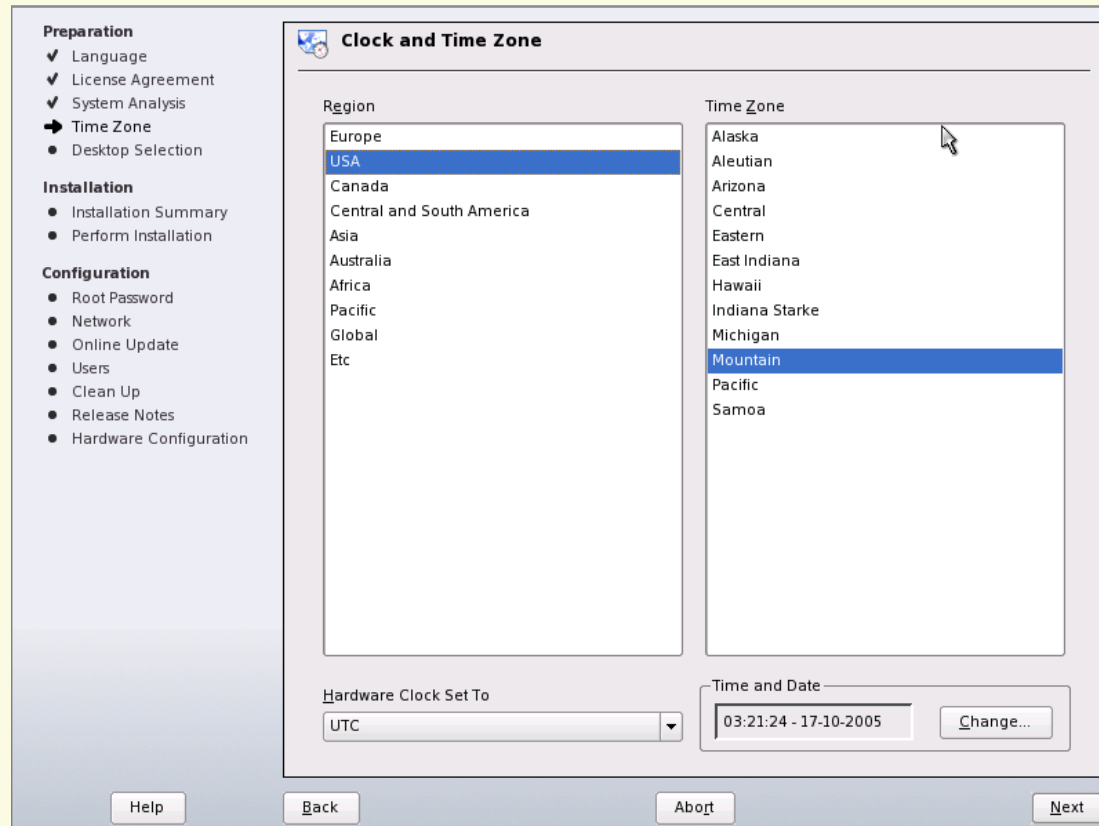
Installation Process – 2a

- ✓ Select configuration items: file systems, software to be loaded, or go with defaults!



Installation Process – 2b

- ✓ Select configuration items: file systems, software to be loaded, or go with defaults!



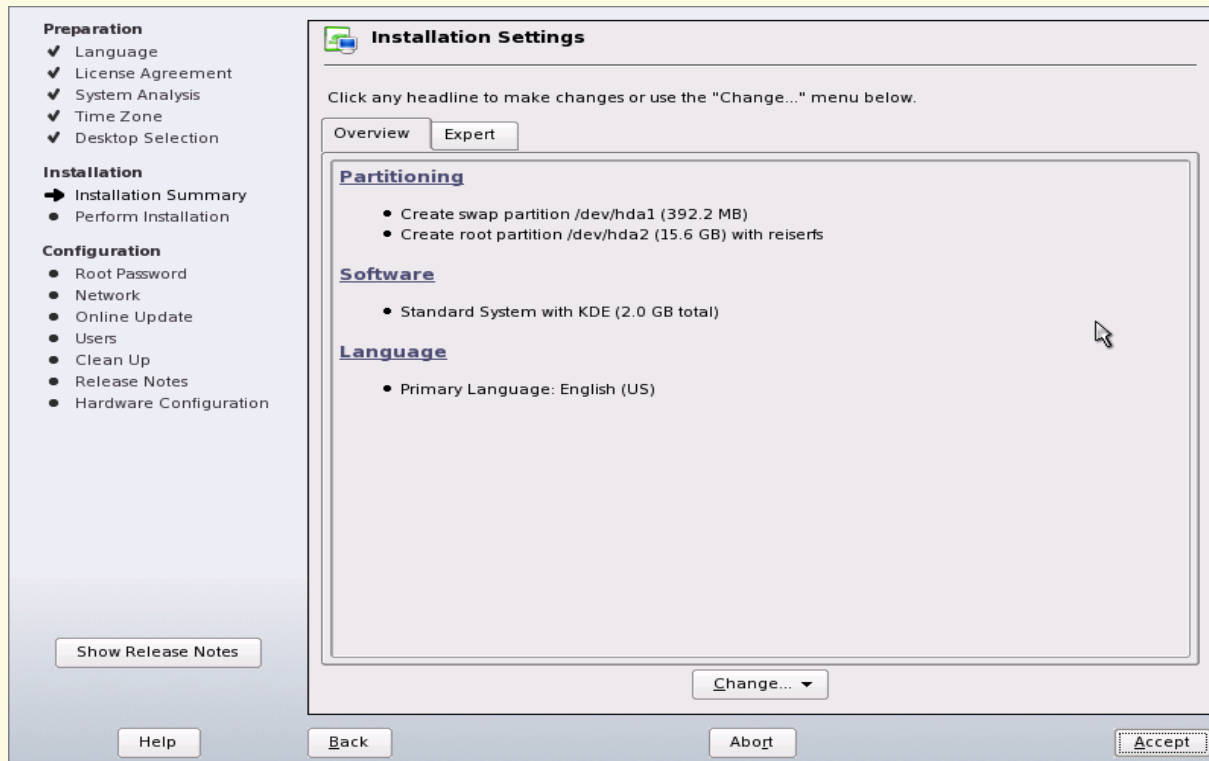
Installation Process – 2c

- ✓ Select configuration items: file systems, software to be loaded, or go with defaults!



Installation Process – 2d

- ✓ Select configuration items: file systems, software to be loaded, or **go with defaults!**



Installation Process – 2e

✓ **OPTIONAL** file system configuration: (sample fdisk information)

/dev/sda1 * 1 4000 32129968+ c W95 Fat32 (LBA)

/dev/sda2 4001 12411 68364607+ f W95 Ext'd (LBA)

/dev/sda3 12512 14469 15727635 83 Linux

/dev/sda4 14470 14593 996030 82 Linux swap / Solaris

/dev/sda5 4001 12511 68364576 b W95 FAT32

/dev/hda1 * 1 1275 10241405 c W95 fat32(lba)

/dev/hda2 1276 5099 30716280 f W95 Ext'd (LBA)

/dev/hda3 5100 7198 16860217+ 83 Linux

/dev/hda4 7199 7296 787185 82 Linux swap / Solaris

/dev/hda5 1276 5099 30716248+ b W95 FAT32

DELL D510 LAPTOP DETAILS: (need to add the Linux 83 & 82)

/dev/sda1 1 6 48163+ de Dell Utility

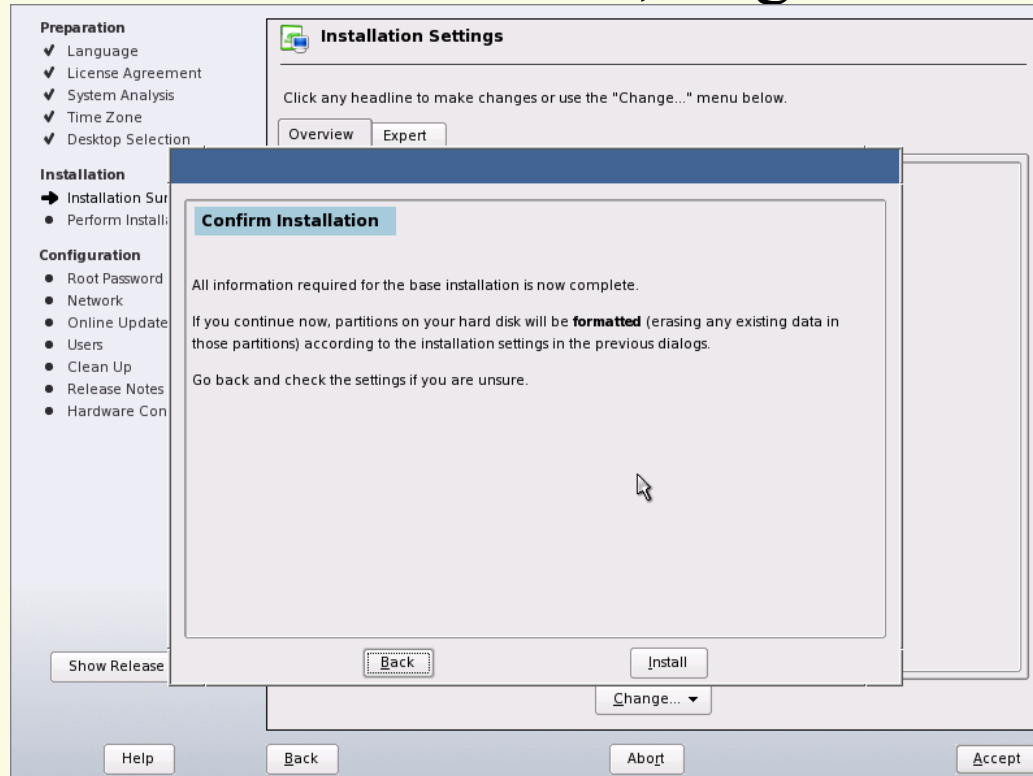
/dev/sda2 * 7 4863 39013852+ 7 HPFS/NTFS

/dev/sda3 4864 13500 69376702+ f W95 Ext'd (LBA)

/dev/sda5 4864 13500 69376702+ b W95 FAT32 (66GB)

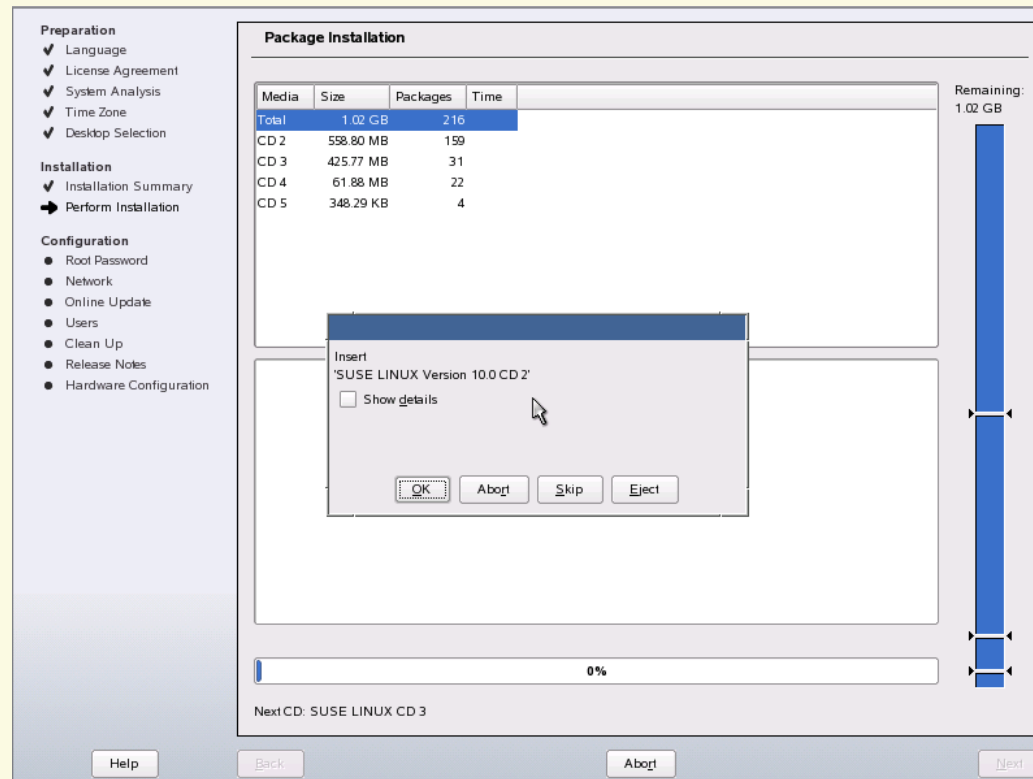
Installation Process – 2f

- ✓ Select configuration items: file systems, software to be loaded, or go with defaults!



Installation Process – 3

- ✓ load CDs as directed



Configure Root Password

Preparation

- ✓ Language
- ✓ License Agreement
- ✓ System Analysis
- ✓ Time Zone
- ✓ Desktop Selection

Installation

- ✓ Installation Summary
- ✓ Perform Installation

Configuration

- ➔ Root Password
- Network
- Online Update
- Users
- Clean Up
- Release Notes
- Hardware Configuration

Password for the System Administrator "root"

Do not forget what you enter here.

Password for root User
[password field]

Confirm Password
[password field]

Expert Options...

Help Back Abort Next

Configure Network

The screenshot shows a network configuration window titled "Network Configuration". On the left is a sidebar with a list of steps: Preparation (Language, License Agreement, System Analysis, Time Zone, Desktop Selection), Installation (Installation Summary, Perform Installation), and Configuration (Root Password, Network, OnLine Update, Users, Clean Up, Release Notes, Hardware Configuration). The "Network" step is selected with a mouse cursor. The main window has two radio buttons: "Skip Configuration" (unselected) and "Use Following Configuration" (selected). Below this is a scrollable area with sections: "Firewall" (enabled, SSH disabled), "Network Interfaces" (Digital DECchip 21140 [FasterNet] configured with DHCP), "DSL Connections" (Not detected), "ISDN Adapters" (Not detected), "Modems" (Not detected), "VNC Remote Administration" (Remote administration is disabled), and "Proxy". A "Change..." button is at the bottom of the scrollable area. At the bottom of the window are "Help", "Back", "Abort", and "Next" buttons.

Preparation

- ✓ Language
- ✓ License Agreement
- ✓ System Analysis
- ✓ Time Zone
- ✓ Desktop Selection

Installation

- ✓ Installation Summary
- ✓ Perform Installation

Configuration

- ✓ Root Password
- ➔ Network
- OnLine Update
- Users
- Clean Up
- Release Notes
- Hardware Configuration

Network Configuration

Skip Configuration

Use Following Configuration

Firewall

Firewall is [enabled](#)
SSH is [disabled](#)

Network Interfaces

- Digital DECchip 21140 [FasterNet]
Configured with DHCP.

DSL Connections

- Not detected.

ISDN Adapters

- Not detected.

Modems

- Not detected.

VNC Remote Administration

- Remote administration is disabled.

Proxy

Change... ▼

Help Back Abort Next

Online Updates

The screenshot displays the YaST Control Center interface on a Linux system. The main window is titled "YaST Control Center @ linux <2>" and features a sidebar with categories like Software, Hardware, System, and Network Services. The "Online Update" option is selected, opening a configuration window titled "Welcome to YaST Online Update".

The "Welcome to YaST Online Update" window contains the following information:

- System Information:** There was no update executed up to now. Product: SUSE LINUX, Version: 10.0.
- Update Configuration:** Installation source is set to "Germany: Host B". The location is "http://ftp.hosteurope.de/mirror/ftp.suse.com/pub/suse/".
- Options:** "Manually Select Patches" is checked, and "Reload All Patches from Server" is unchecked.
- Buttons:** "New Server...", "Edit Server...", and "Configure Fully Automatic Update..." are visible.

A smaller dialog box titled "Retrieving information about new updates.." is overlaid on the main window, showing a progress bar at 0% and an "Abort" button.

The YaST2 window also contains explanatory text:

YaST Online Update (YOU) is the easy way to get all recommended patches and security fixes from a SuSE update server.

If **Manually Select Patches** is checked, all available patches will be shown from which to select the patches to install.

If **Reload All Patches from Server** is checked, all patches will be fetched from the server even when they already are locally available from a previous download.

After clicking **New Server**, select a local installation source instead of an FTP or HTTP server or select another FTP or HTTP server. Click **Edit Server** to edit the location of the selected server.

The desktop background features a green and yellow lizard. The taskbar at the bottom shows the system clock at 19:24 on 2005-10-17, along with icons for XMMS, Konqueror, and YaST2.

Configure User Password

Preparation

- ✓ Language
- ✓ License Agreement
- ✓ System Analysis
- ✓ Time Zone
- ✓ Desktop Selection

Installation

- ✓ Installation Summary
- ✓ Perform Installation

Configuration

- ✓ Root Password
- ✓ Network
- ✓ Online Update
- ➔ Users
 - Clean Up
 - Release Notes
 - Hardware Configuration

New Local User

User's Full Name
anyweb

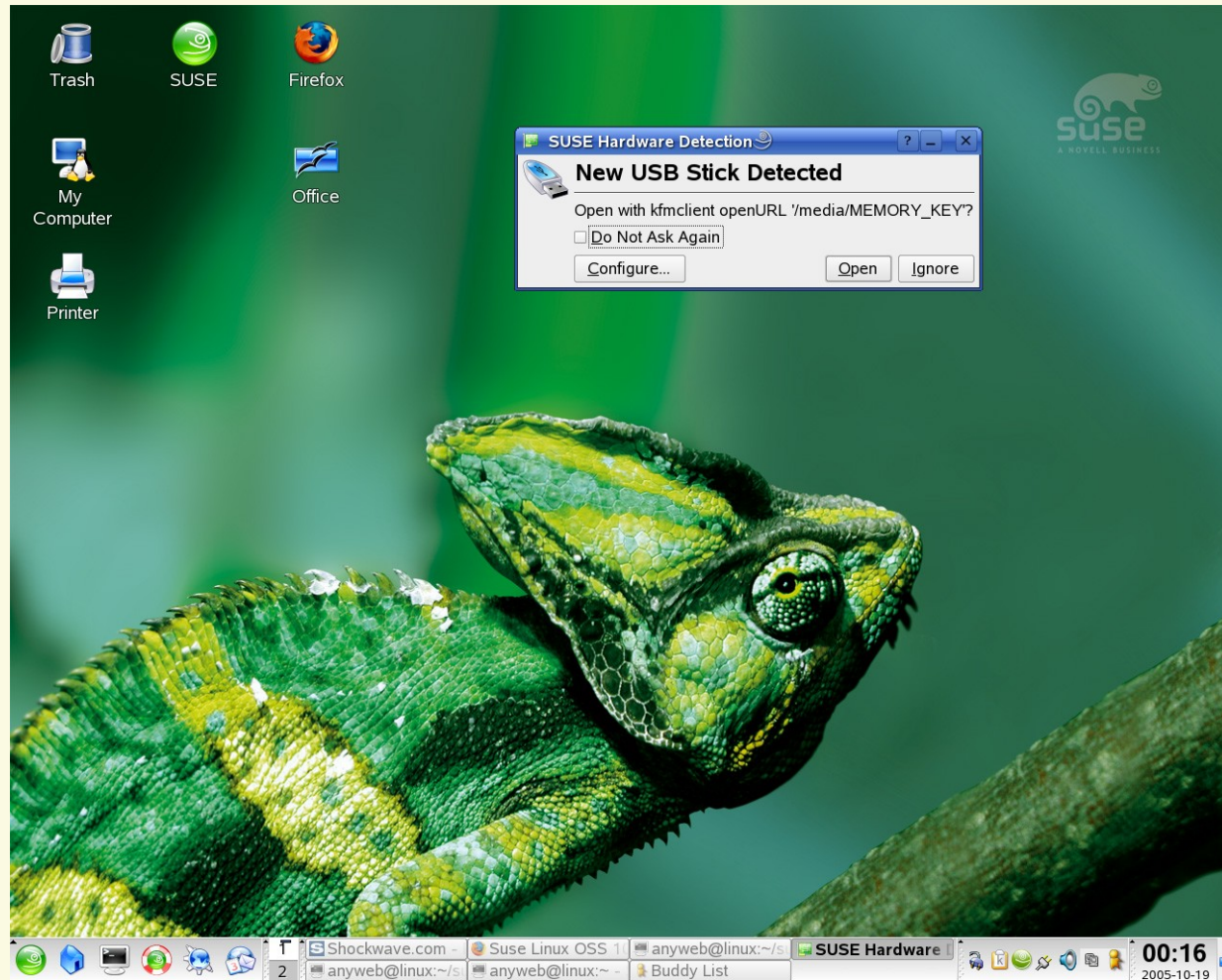
Username
anyweb

Password

Confirm Password

Receive System Mail
 Automatic Login

Hardware Updates



Welcome to Linux

