

Nikon Capture NX "How To..." Series

Article 8 - How to use Control Points to make brown, withered looking grass a more vibrant green.



Before enhancement: The grass appears brown and withered.

After enhancement: The color of the grass is a more vibrant green.



Procedure:

Step 1 - Position a Color Control Point over the grass portion.

Step 2 - Change the enhancement mode to RGB.

Step 3 - Enhance green using the "G" slider.

Step 4 - Duplicate the Color Control Point

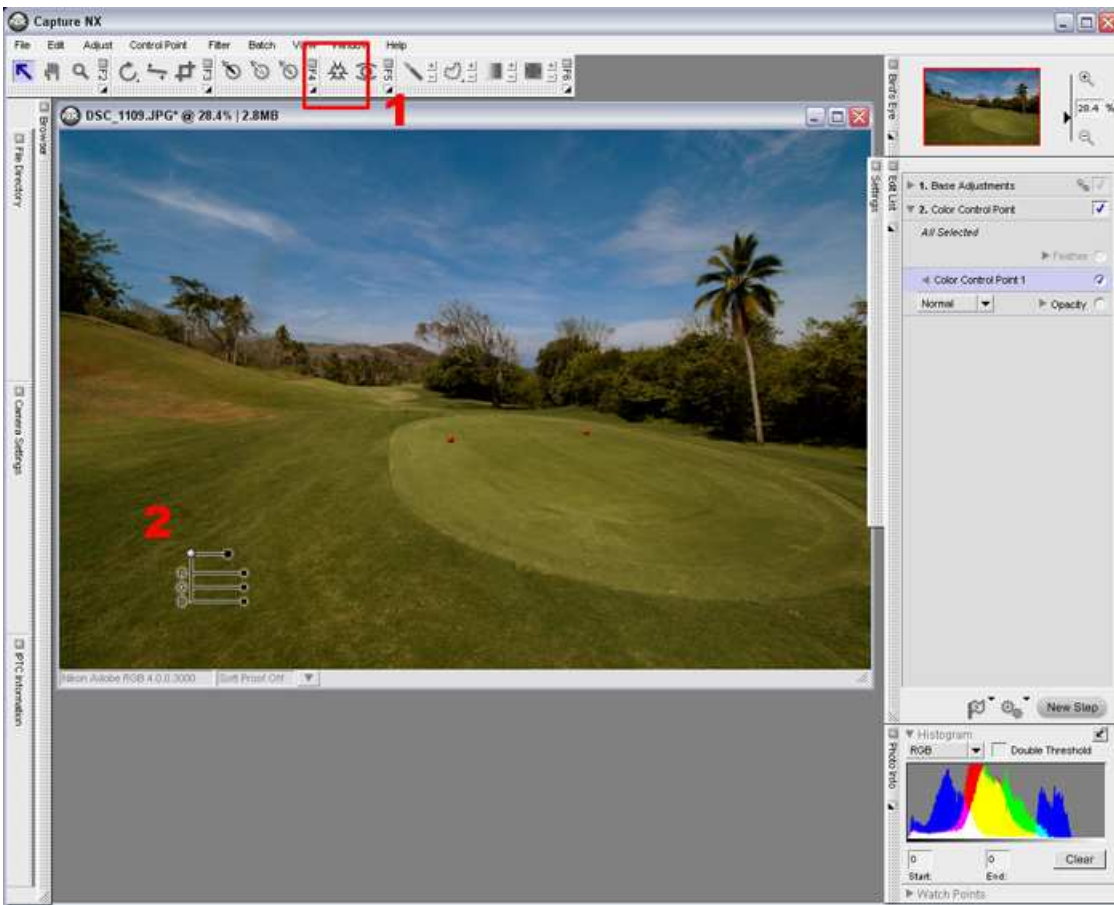
Step 5 - Remove the effects of the Color Control Point

Step 6 - Check results.

Step 1 - Position a "Color Control Point" over the grass portion.

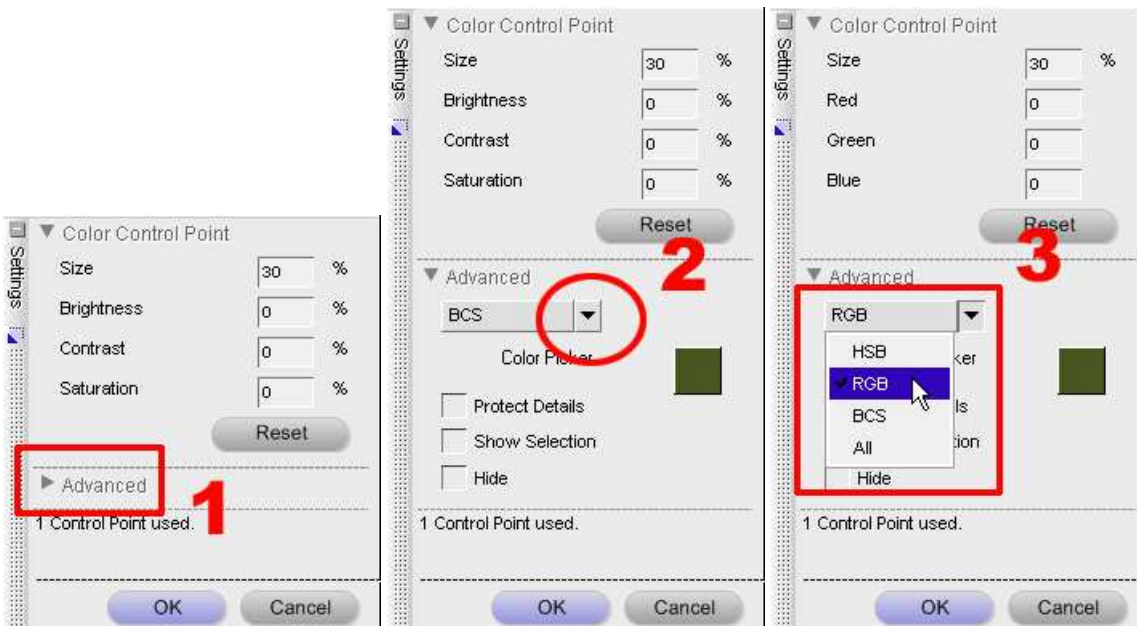
1) Select the Color Control Point Tool

2) Position the Color Control Point over the grass portion.



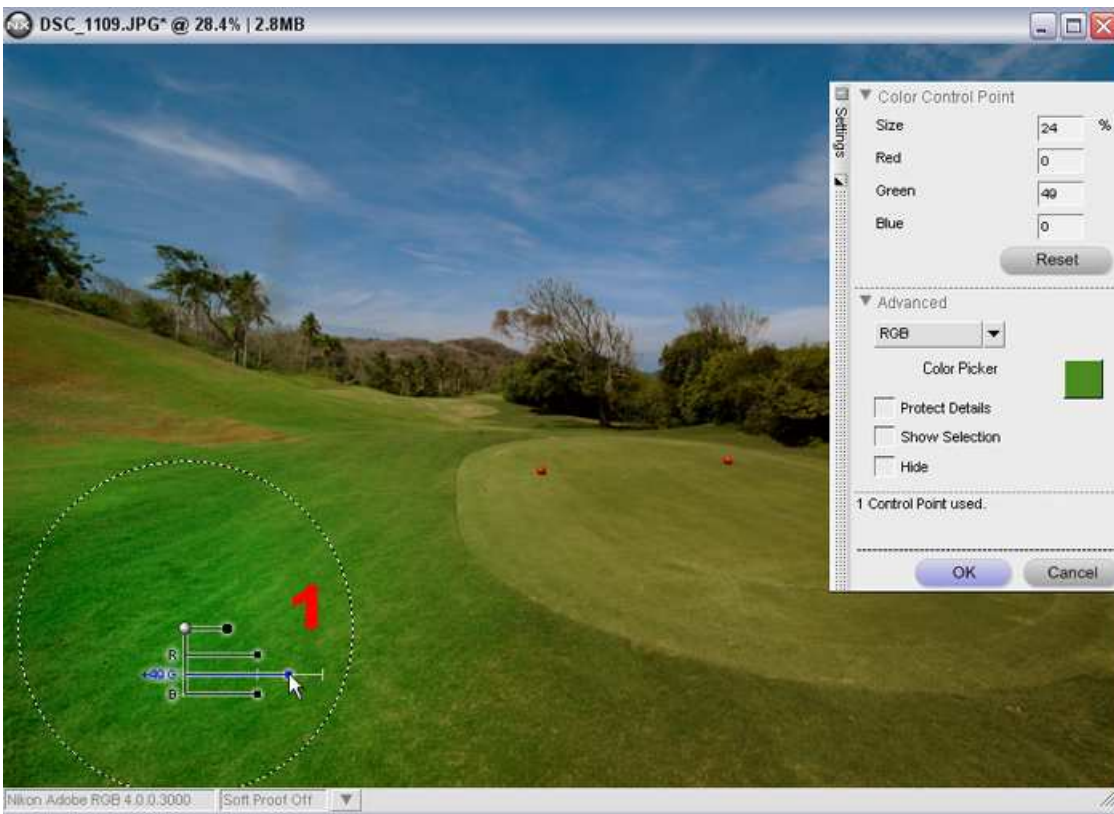
Step 2 - Change the enhancement mode to RGB

- 1) Click the "Advanced" triangle in the "Color Control Point" dialog.
- 2) Click "BCS" and select "RGB" from the pulldown menu.
- 3) "RGB" mode is selected

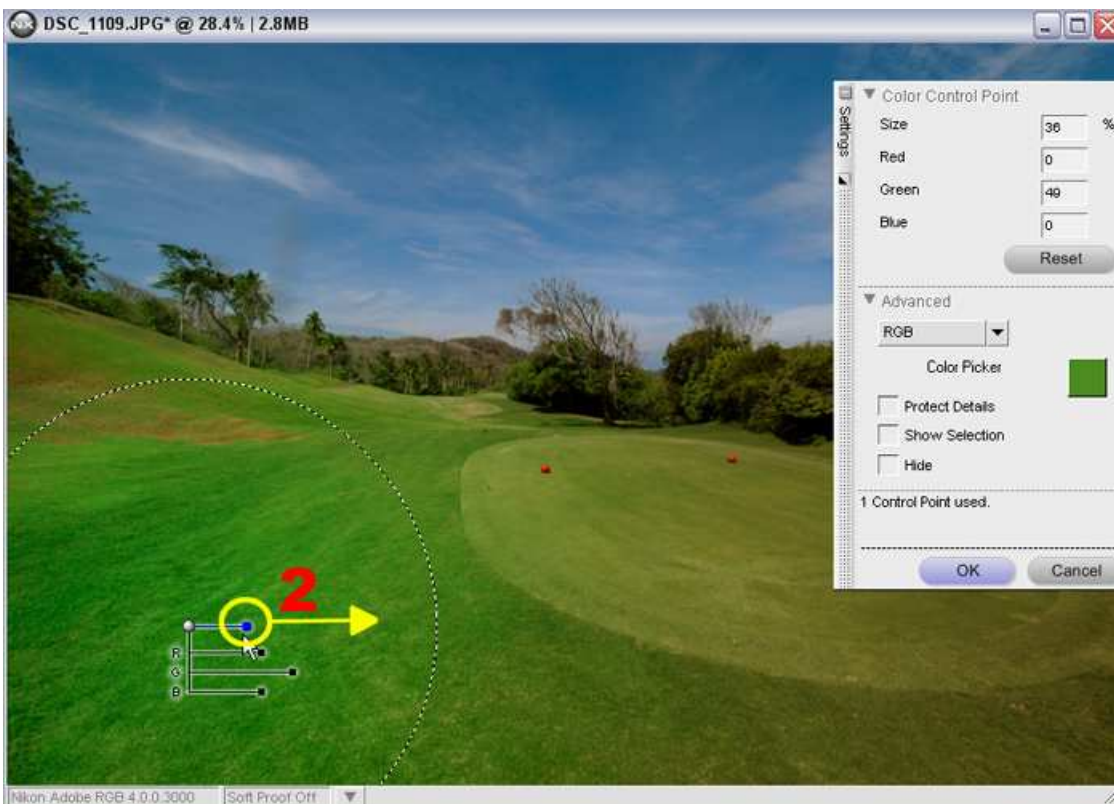


Step 3 - Enhance the green using the "G" slider.

- 1) Drag the handle on the "Color Control Point"'s "G" slider to the right to enhance green.



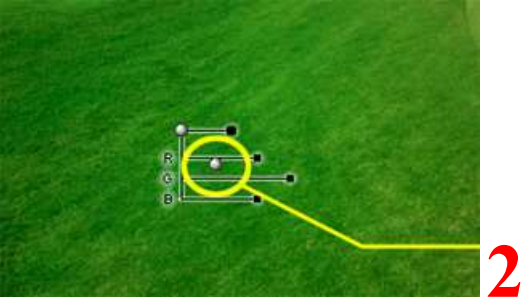
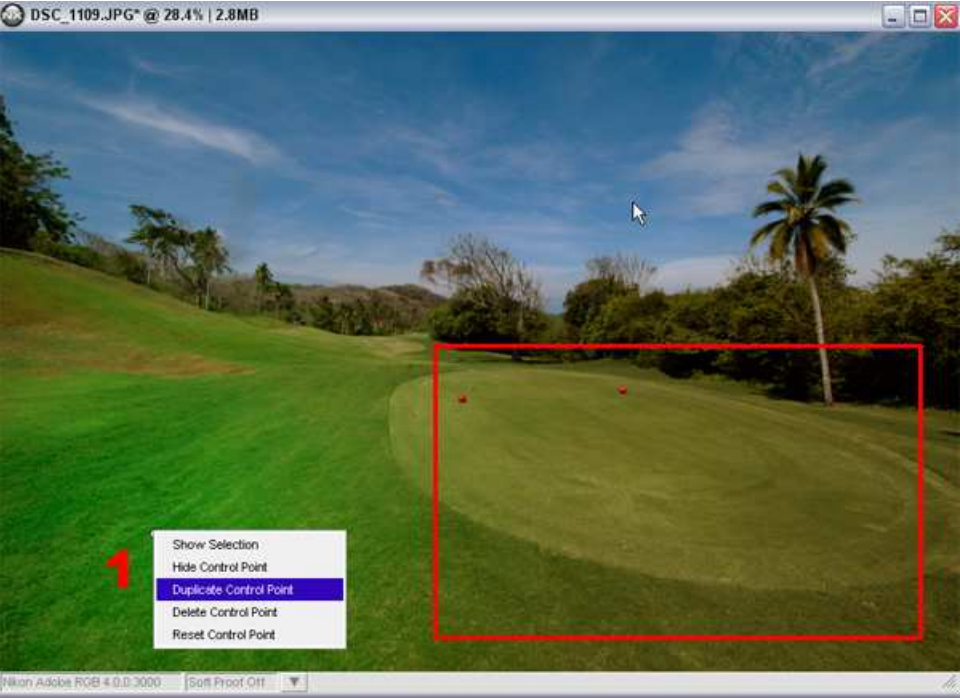
2) Slide the "Color Control Point"'s uppermost "Size" slider to specify the effective range of green enhancement.



Step 4 - Duplicate the Control point

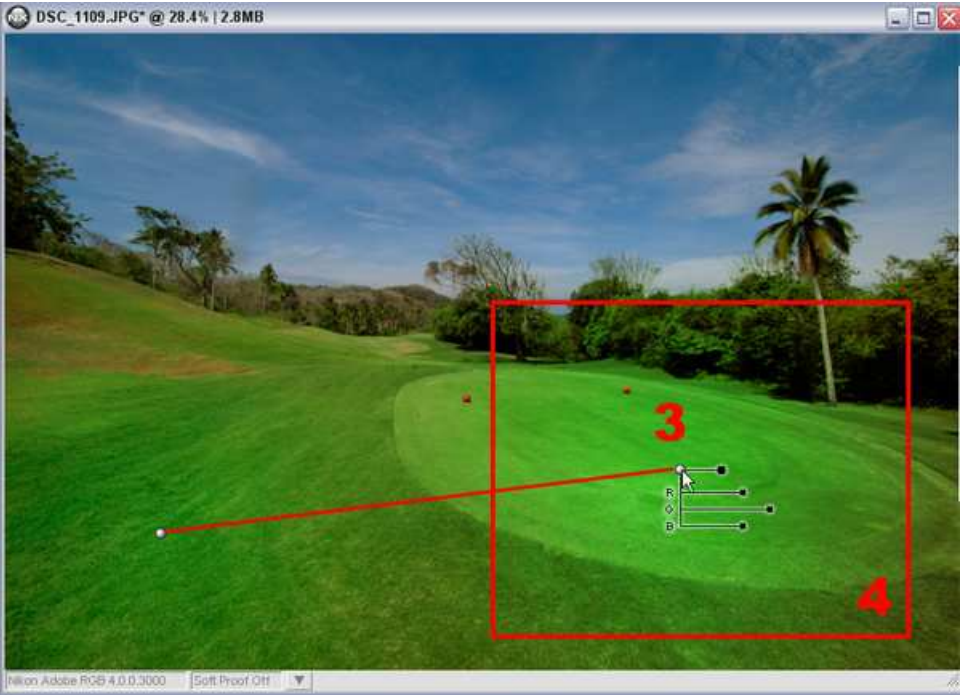
1) Duplicate the "Color Control Point" to enhance the dull color of the green (shorter grass surrounding the hole) on the right side of the image. Position the mouse cursor over the "Color Control Point" and Right-Click (hold down the CONTROL key on a Macintosh). Select "Duplicate Control Point" from the menu.

2) A new Color Control Point with the same settings applied as the original Color Control Point, will be placed near the original.



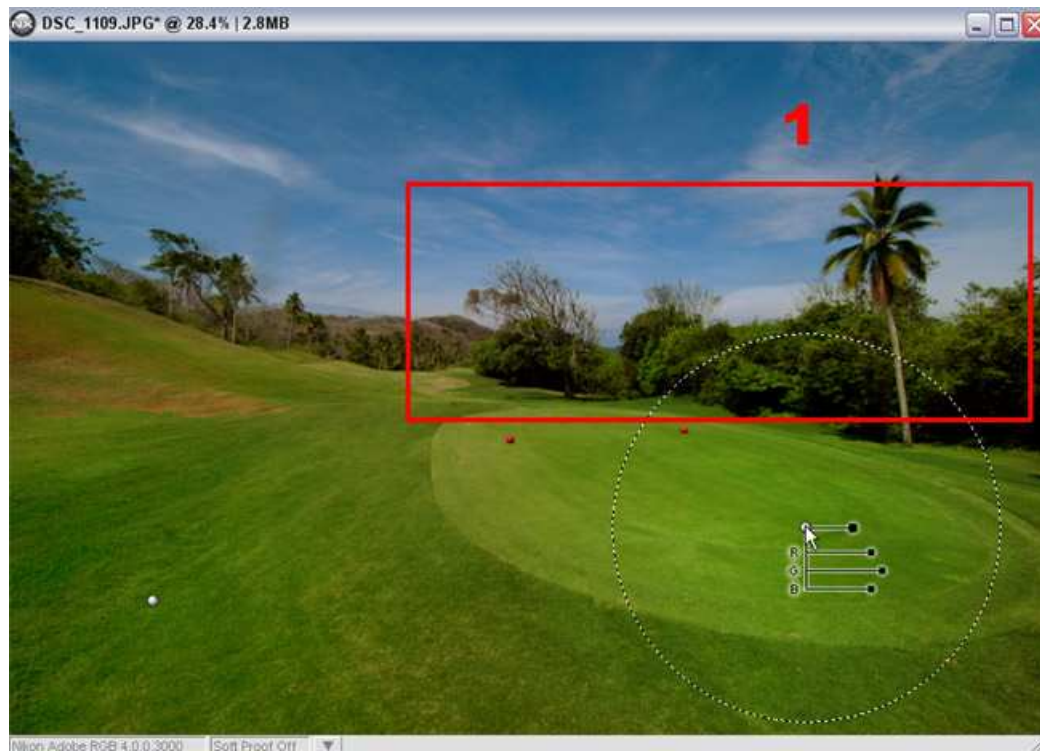
3) Move the second Color Control Point so that it is positioned over the green on the right side of the image. Click, Drag, and Drop.

4) The color of the green becomes more vivid.



Step 5 - Remove the effects of the Color Control Point.

1) The second Color Control Point also enhances the color of the trees in the background.



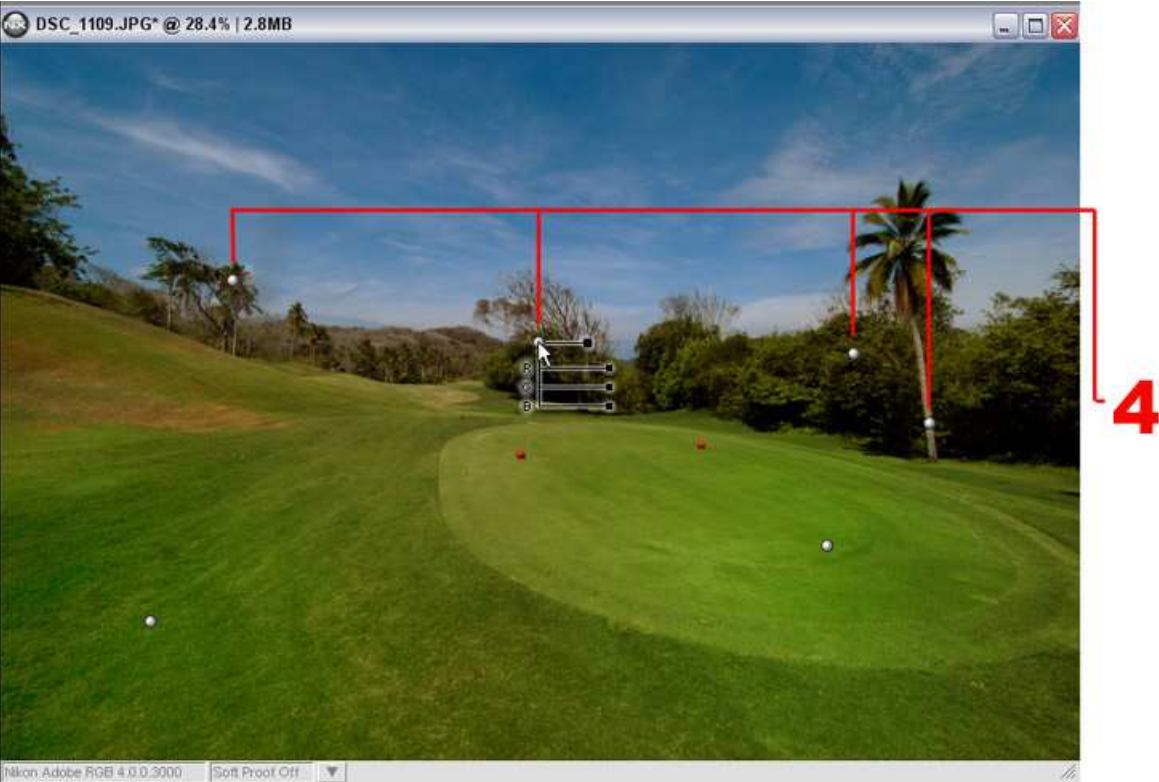
2) Color in this portion of the image can be reverted to the original colors by positioning an additional Color Control point that removes enhancement effects.



(3) Adjust the Size slider for the additional Color Control Point to include the range in which enhancements applied with previous Color Control Points will be removed.

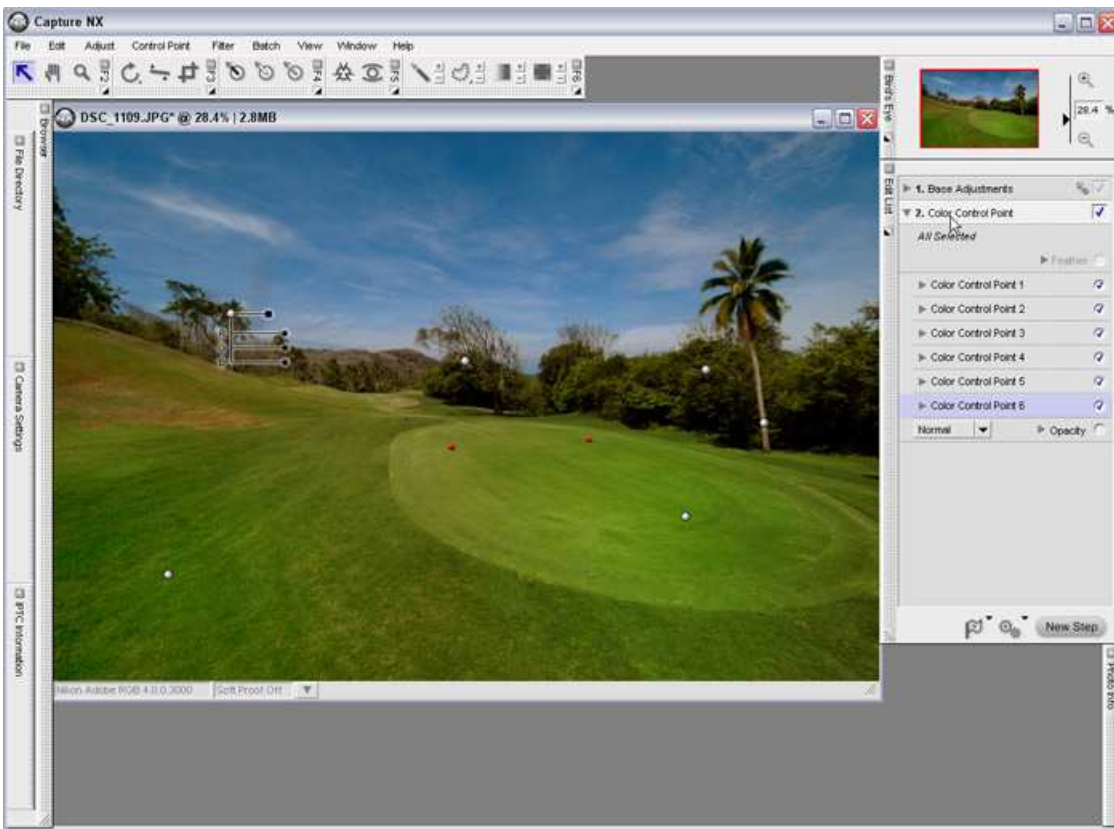


(4) As many Color Control Points as necessary can be positioned over the background area, which should not be enhanced or affected by enhancements applied with previous Color Control points. We have positioned 3 additional Color Control points (4 altogether) over the green tree line to control this color.



Step 6 - Check Results

The image below shows the results of enhancement. A step is added to the "Edit List" for each Color Control Point used on the image.



Another use for Color Control Points - Preventing the effects of other Color Control Points.

"Color Control Points" affect all other colors similar to the color over which they are placed within the specified range. Therefore, enhancements are sometimes applied to portions of the image where they are not wanted. To avoid this, "Color Control Points" at their default settings may be placed over areas that should not be enhanced, as shown here. Further, by enabling, (checking) the "**Protect Details**" option in the "Advanced" portion of the "Color Control Point" dialog, enhancement errors can be prevented as all sliders except for "Size" are hidden.



To confirm the range that is not affected by other Color Control point enhancements, enable (check) the Show Selection option in the Advanced portion of the Color Control Point (in this case, the range that is not affected by enhancements with other Color Control Points).

