

## Nikon Capture NX "How To..." Series

### Article 10 - How to use the Zoom tool and Light Table views in the Browser.

#### Options:

- 1 - Use the "Zoom Tool" to change thumbnail size.
- 2 - View thumbnails with the "Light Table" view.

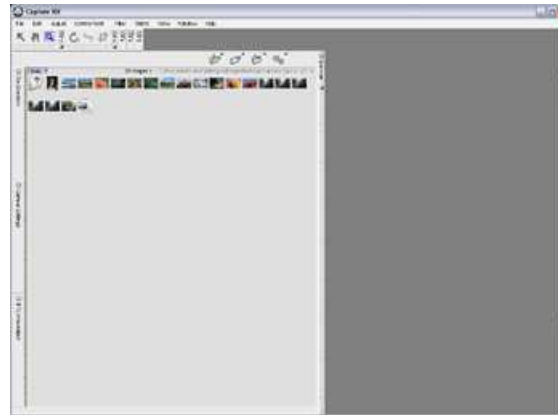
#### Option 1 - Use the "Zoom Tool" to change thumbnail size.

You can change the size of thumbnails by selecting the "Zoom Tool" and clicking anywhere in the "Browser" window.

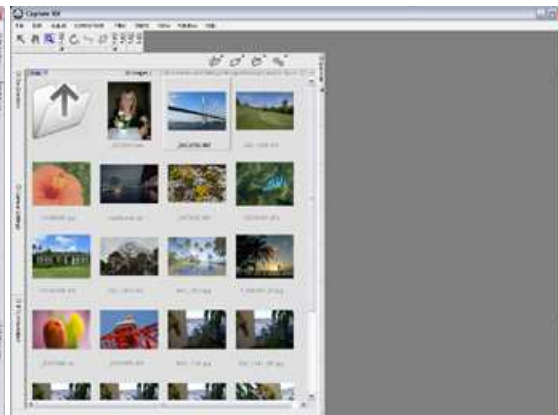
Enlarge thumbnail size: (1) Select the Zoom Tool, and click in the Browser Window

Reduce thumbnail size: Select the Zoom Tool, hold down the ALT key (CONTROL key on a Macintosh) and click in the Browser window.

Minimum size thumbnail



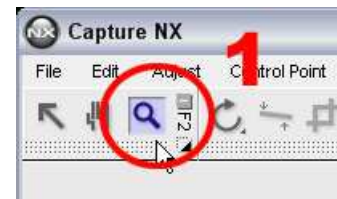
Medium size thumbnail



Maximum size thumbnail



Zoom Tool

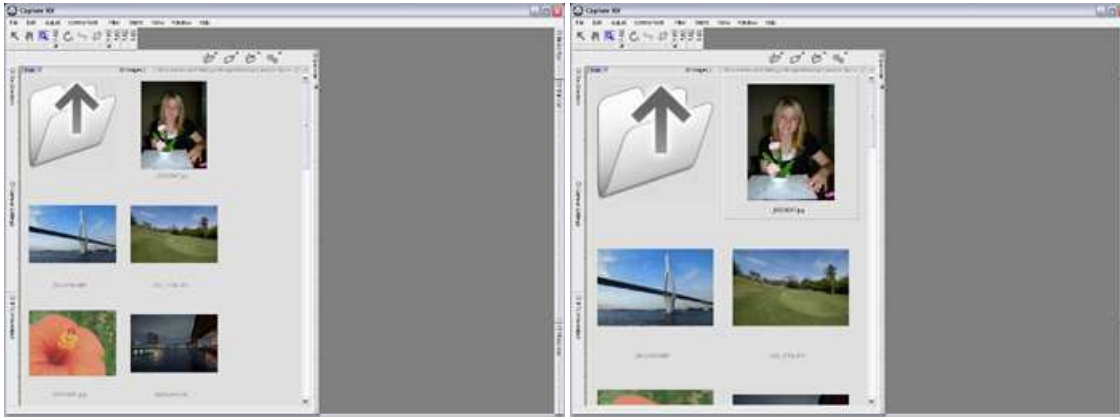


Small size thumbnail



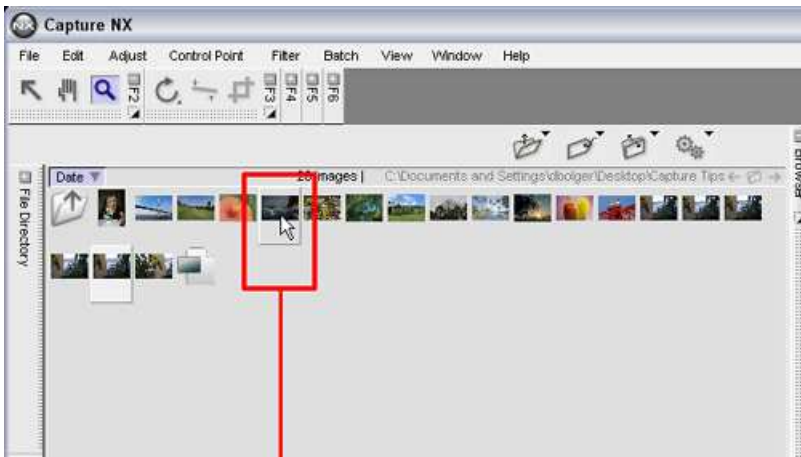
Large size thumbnail



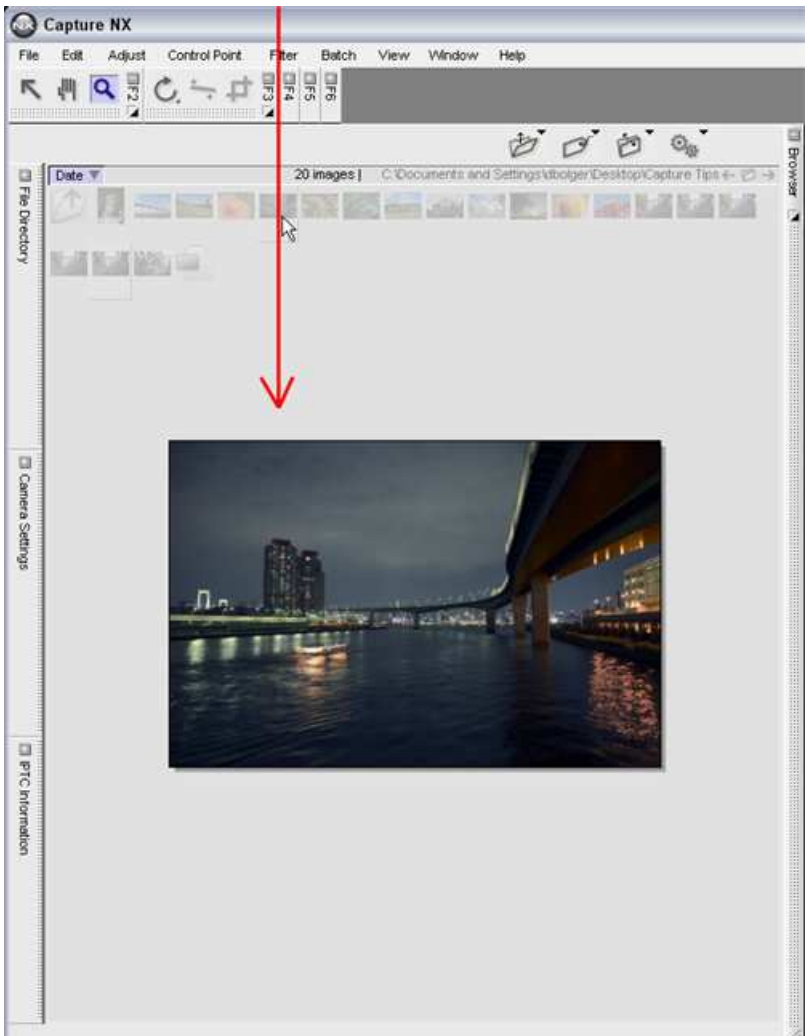


### Enlarging a selected image in the Browser.

This feature is convenient for showing an enlarged display of a single thumbnail when a large number of thumbnails require a smaller size.



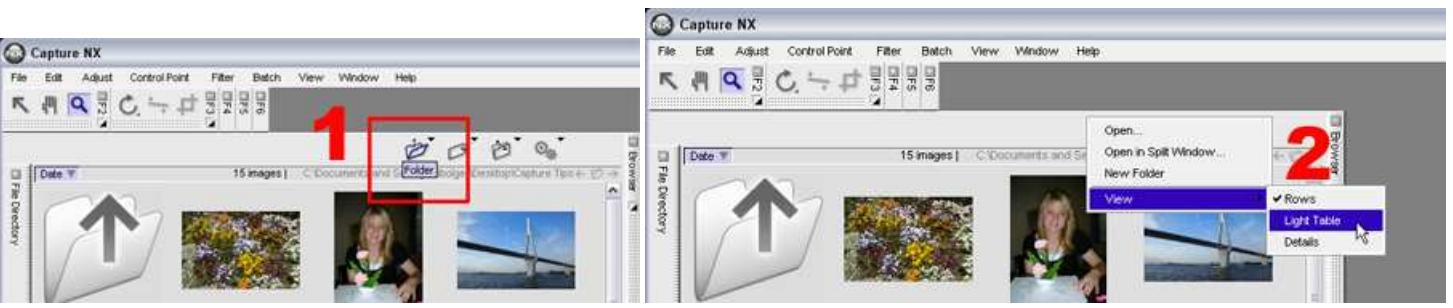
When the Zoom Tool is positioned over a thumbnail displayed in the Browser for 1 second or more, an enlargement of that thumbnail is displayed. This feature is convenient for showing an enlarged display of a single thumbnail when a large number of thumbnails requires smaller individual thumbnail sizes in the browser.



**Option 2 - View thumbnails with the Light table**

You can change from Thumbnail view to Light table view by clicking the Folder menu and selecting Light Table from the View submenu. The Light Table view allows you to view overall thumbnail layout, to change the portion of the Light table that is visible within the Browser, and to change the size of the thumbnails.

- (1) Select the Folder option in the Browser.
- (2) Choose View / Light table

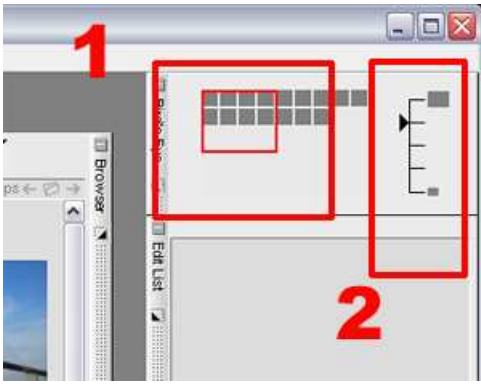


**The Bird's Eye Palette:**

Located in the upper right hand portion of the window when "Light Table" view is selected.

- (1) The "Bird's Eye Palette" is an effective tool available in "Light Table" view. The area indicated by the red border shows the current location in relation to all thumbnails on the light table. You can drag the red border to display thumbnails not currently displayed.

(2) The vertical slider in the "Bird's Eye Palette" allows you to choose 1 of 5 thumbnail sizes.



#### **Advantages of Light Table View:**

The Light table view is convenient for use with a large number of thumbnails. The Bird's Eye Palette gives you quick overview of all thumbnails, allows you to increase or decrease thumbnail size, and to change relative display position instantaneously.