

# Nikon Capture NX "How To..." Series

## Article 12 - How to use the Edit List.

**Purpose:** To have a better understanding of how to use the "Edit List".

**Option 1** - Add a step to the "Edit List".

**Option 2** - Enable or disable the effects of image enhancement.

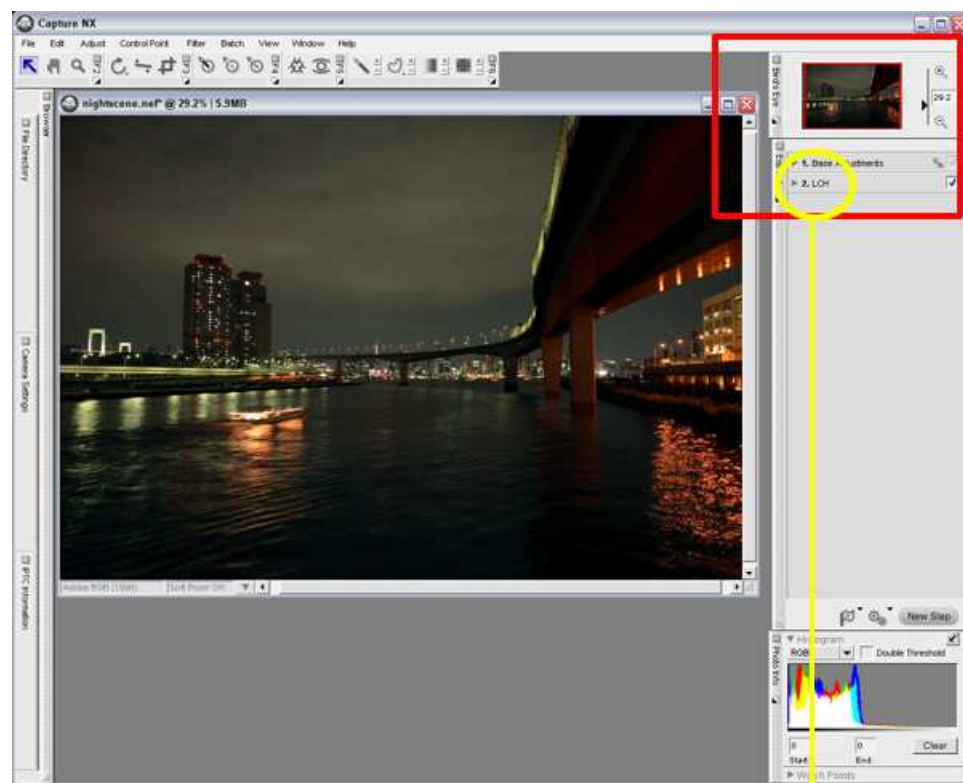
**Option 3** - Modify a step.

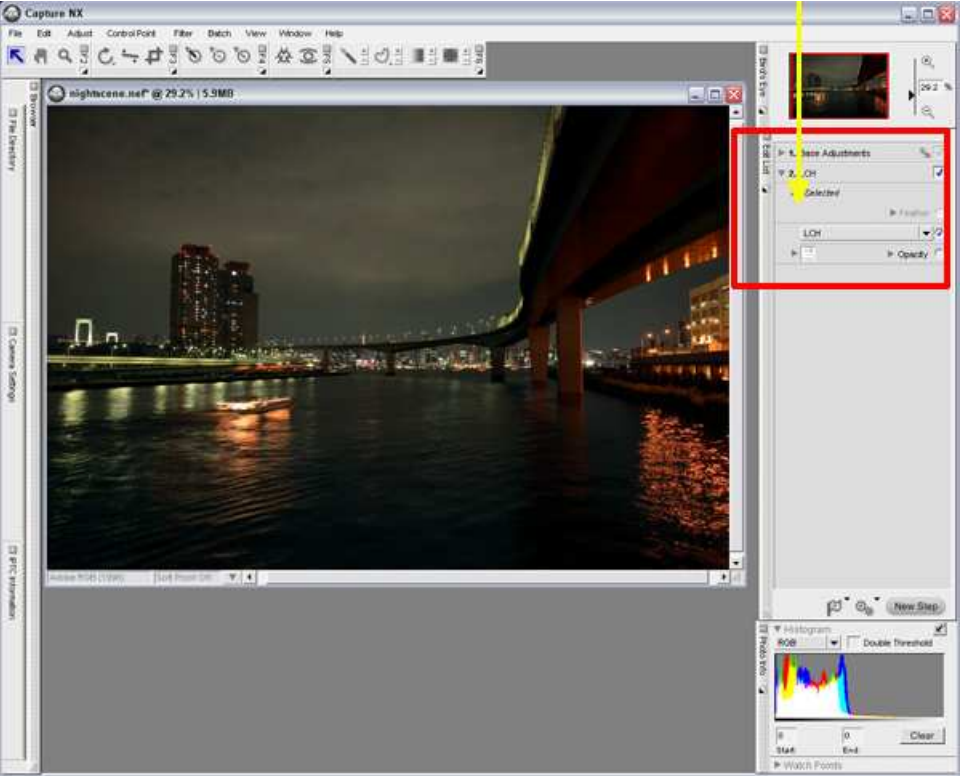
**Option 4** - Adjust enhancement strength using the "Opacity" setting.

**Option 5** - "Feather" partial enhancement area boundaries.

**Option 1** - Add a step to the "Edit List".

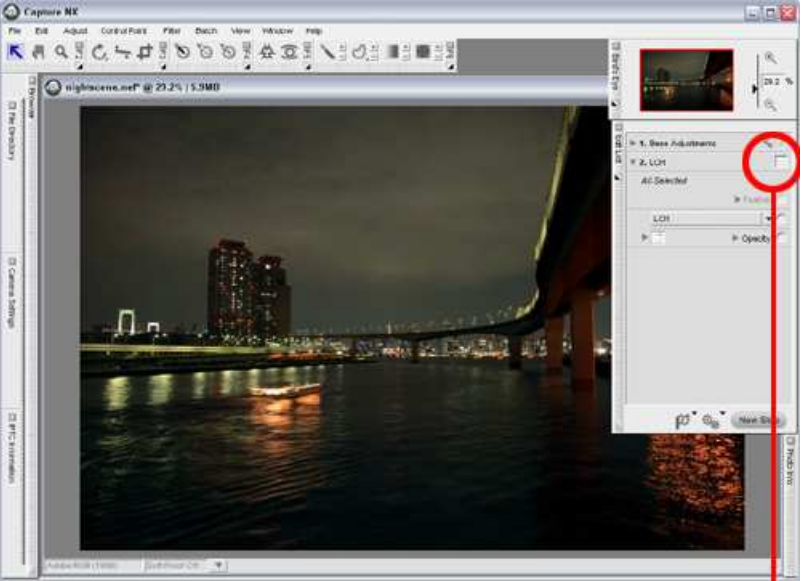
A "step" is added to the "Edit List" each time some type of enhancement is applied to an image. Clicking the show / hide triangle next to the step shows or hides details for the particular enhancement.

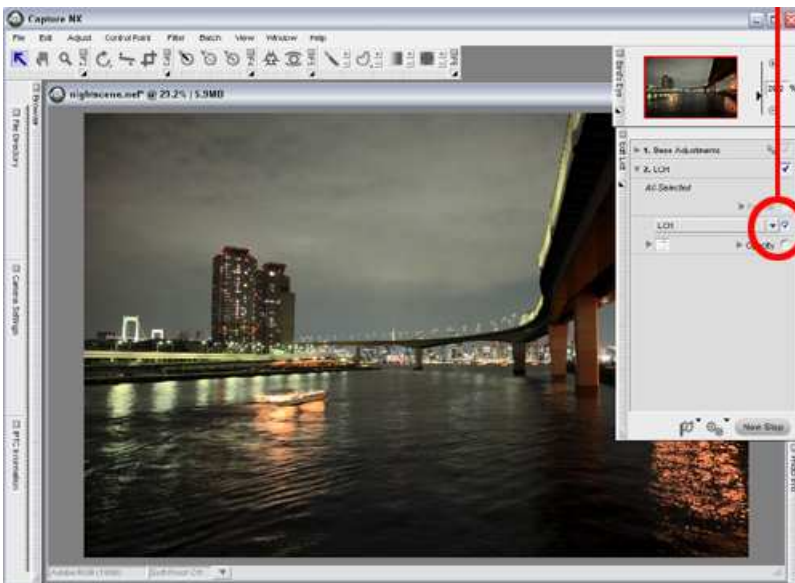




**Option 2 - Enable or Disable the effects of image enhancement.**

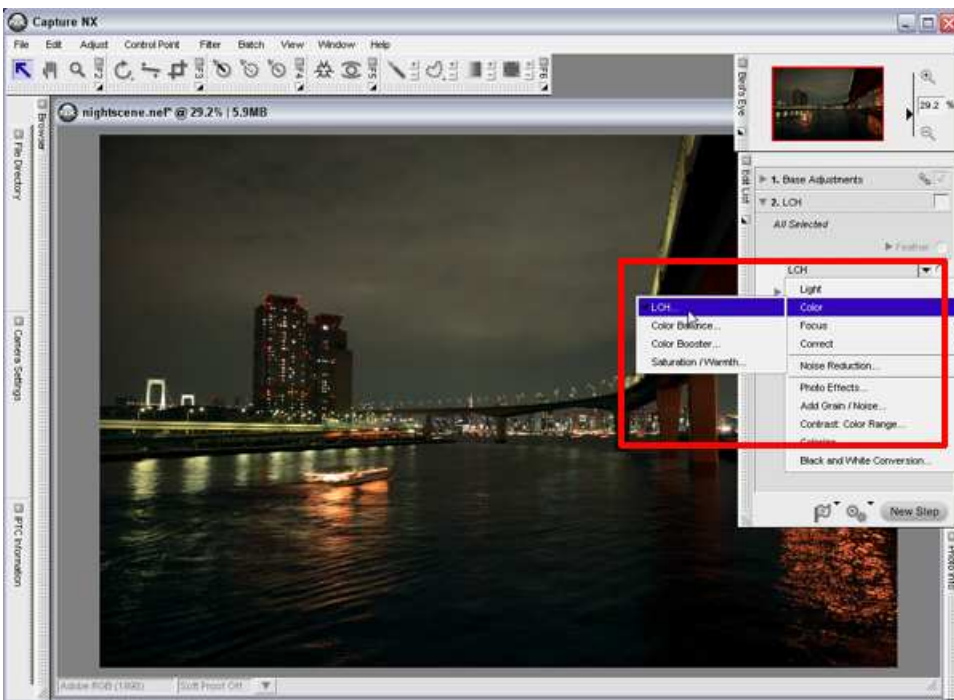
The checkbox displayed with each step allows the effects of a particular enhancement to be enabled (checked ) or disabled (unchecked).





### Option 3 - Modify a Step

A step can be modified by opening the step and selecting a new type of enhancement from the drop down menu. Only enhancement steps and "Control Point" steps, can be modified.



### Differences between Base and Enhancements Steps:

**1. Base Adjustments** is automatically added when an image is opened, and is always displayed at the top of the Edit List. The **1. Base Adjustments** step cannot be deleted or moved. Image enhancements applied by the user are added to the Edit List as Enhancement Steps below **1. Base Adjustments**.

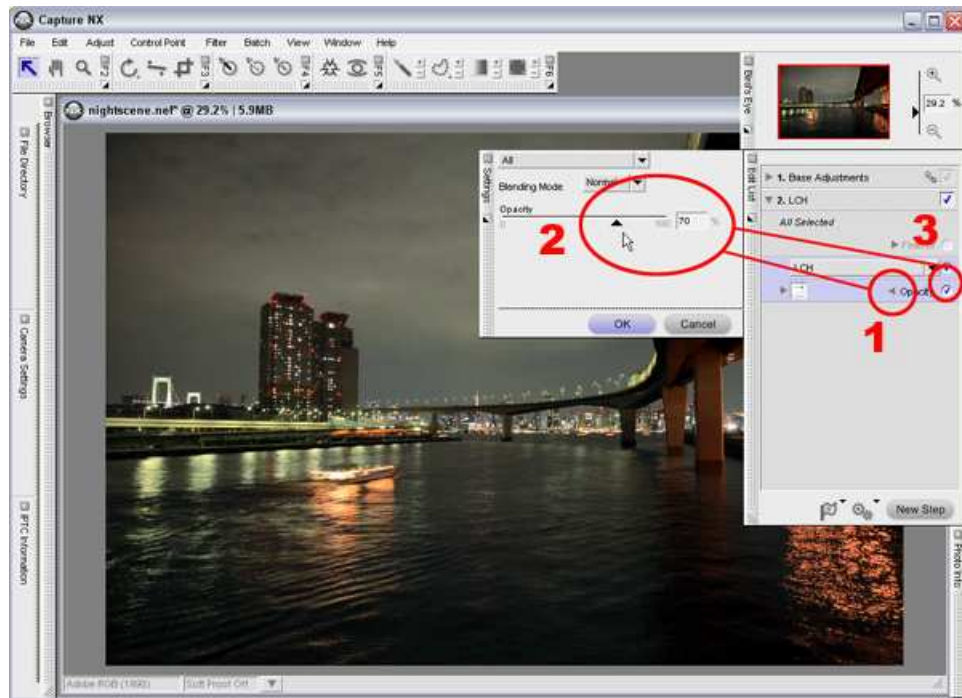
### Option 4 - Adjust enhancement strength using the "Opacity" setting.

Click the show / hide triangle next to a step's "Opacity" option to open the "Opacity Mixer" and adjust the strength of the enhancement. "Opacity" can be adjusted for enhancement steps only.

1) Click the Show/Hide triangle next to a step's "Opacity" option to open the "Opacity Mixer".

2) Adjust opacity from the "Opacity Mixer". Here we have reduced opacity from the default setting of 100% to 70%.

3) The strength of the image enhancement is reduced and a check is added to the "Opacity" option.

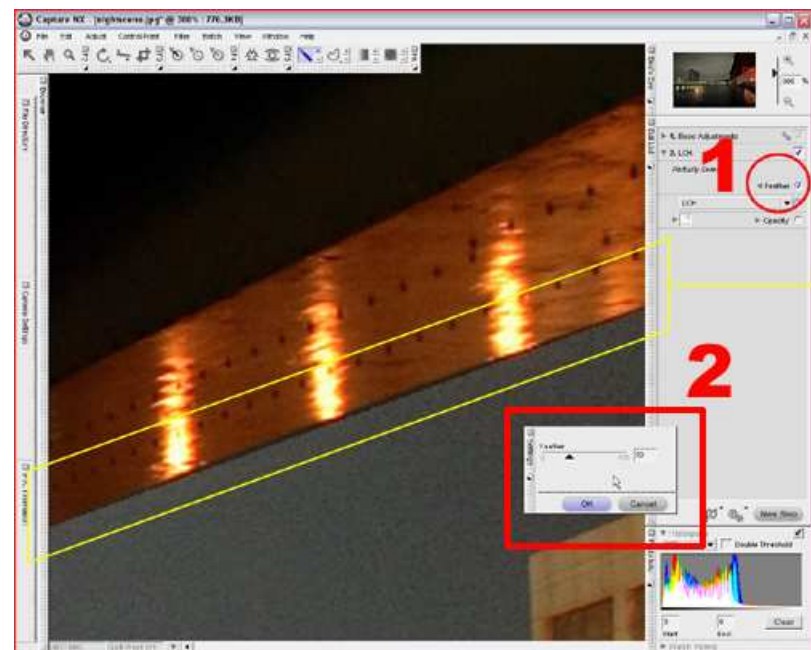


**Option 5 - Feather partial enhancement boundaries.**

When enhancements are applied to a selected portion of an image, and the boundary between the enhanced area and a non-enhanced area appears unnatural, these edges can be feathered to appear more natural. Edge feathering is only possible with enhancement steps.

1) Click the "Feather" show/hide triangle.

2) Move the slider to adjust the degree of feathering, and reduce the 'jaggedness' of the edge.



Enhancement edges are feathered, or blurred, to reduce the jagged appearances for more natural enhancement.

**"All Selected" and "Partially Selected" displayed with steps.**

"All Selected" or "Partially Selected" is displayed with each enhancement Step. "All Selected" means that step enhancements are applied to the entire image, while "Partially Selected" means that step enhancements are applied to only a selected portion of the image. When the effects of step

enhancements have not been applied, "**Nothing Selected**" is displayed .