

Nikon Capture NX "How To..." Series

Article 19: How to Crop an image and print to that size.

Purpose: To use the Crop Tool to crop an image to a specific aspect ratio, then print that image so that it fits perfectly. We will use a 3.5" x 5" aspect ratio for this demonstration.

Process:

Step 1 - Open the image you would like to print.

Step 2 - Specify crop settings for a 3.5" x 5" aspect ratio.

Step 3 - Crop the image to the 3.5" x 5" aspect ratio.

Step 4 - Select "Print..." from the "File" menu.

Step 5 - Specify paper size in the "Print Layout" dialog.

Step 6 - Modify print orientation if necessary.

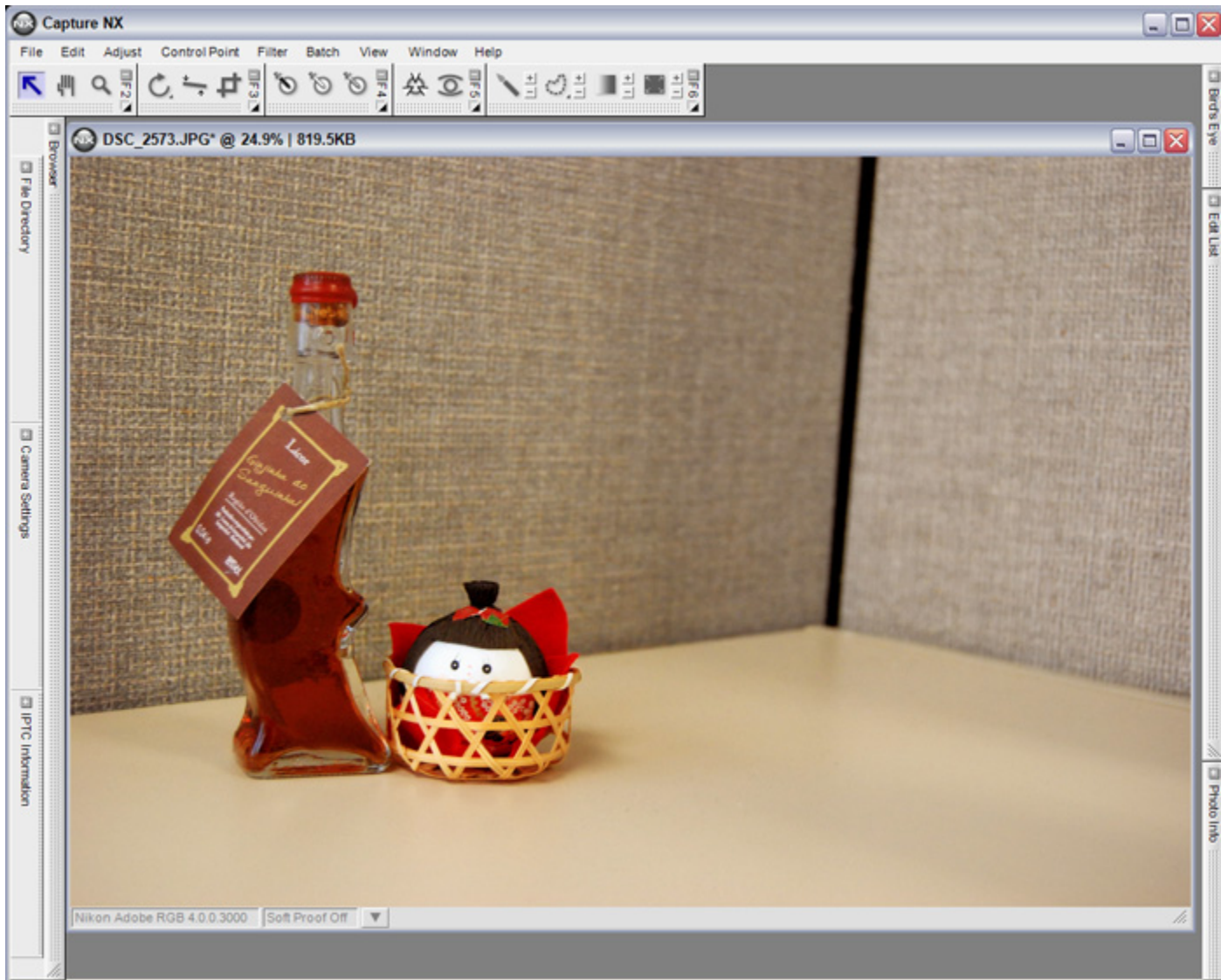
Step 7 - Be sure that the maximum printable area possible with your printer is utilized.

Step 8 - Begin printing.

Step 1 - Open the image you would like to print.

Before attempting to print, be sure that the printer is connected to the computer, that paper is loaded in the printer, and that the printer is on and ready.

Open the image you would like to print.



Step 2 - Specify crop settings for a 3.5" x 5" aspect ratio.

1) Double - click the "Crop" Tool.

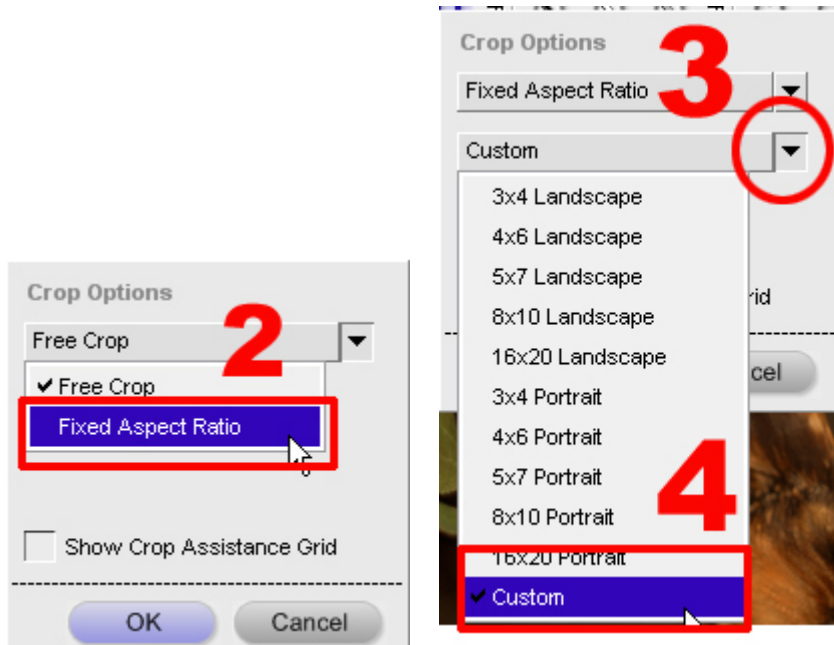


2) The "Crop Options" dialog is displayed. Select "Fixed Aspect Ratio" from the pulldown menu.

3) Select "Custom" from the aspect ratio pulldown menu (lower).

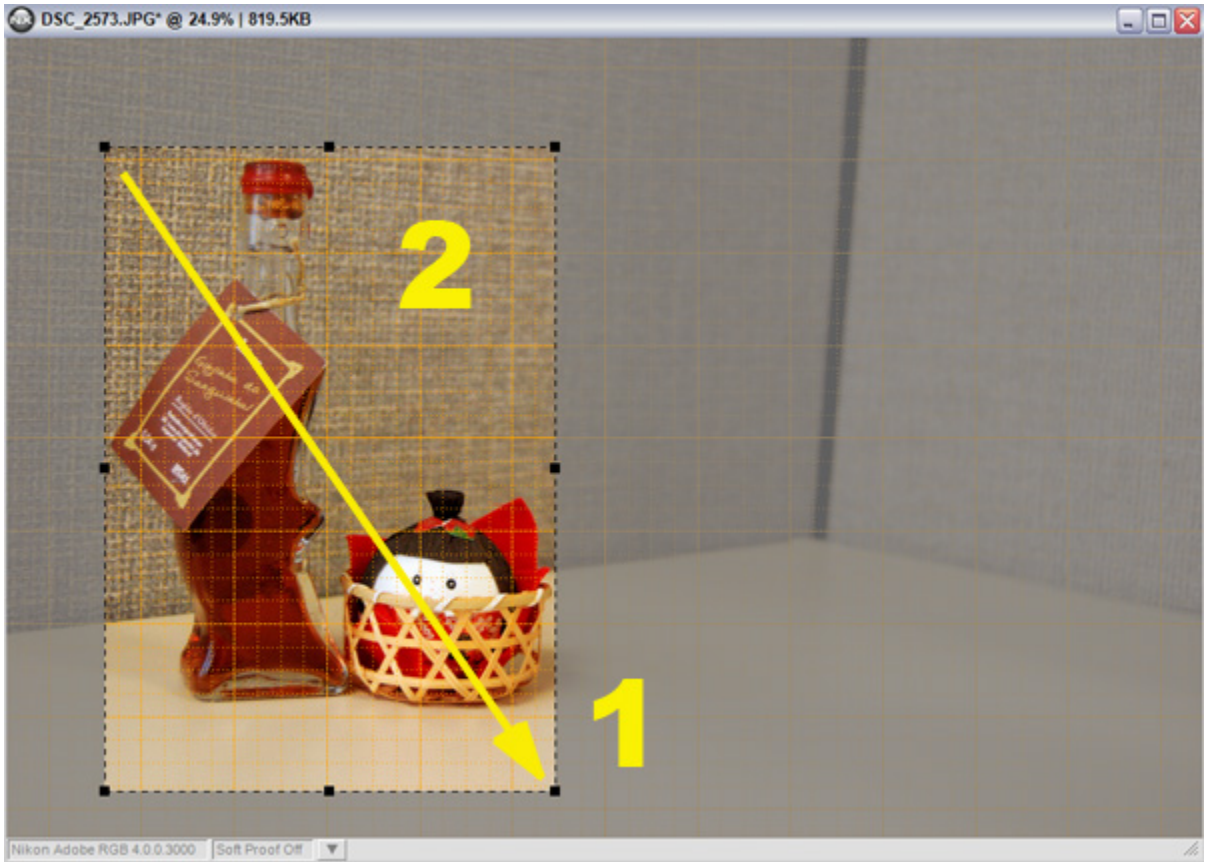
4) Enter dimensions "5" and "3.5" in the custom size text boxes.

5) Select "OK".



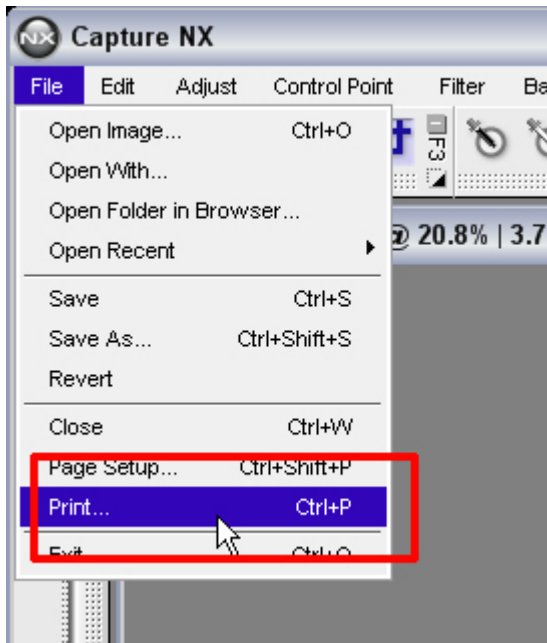
Step 3 - Crop the image to the 3.5" x 5" aspect ratio.

- 1) Drag the Crop Tool cursor across the portion of the image you would like to keep.
- 2) Once you have selected the portion you would like to keep, double-click inside the selected area.
- 3) The image is cropped to a 3.5" x 5" aspect ratio.



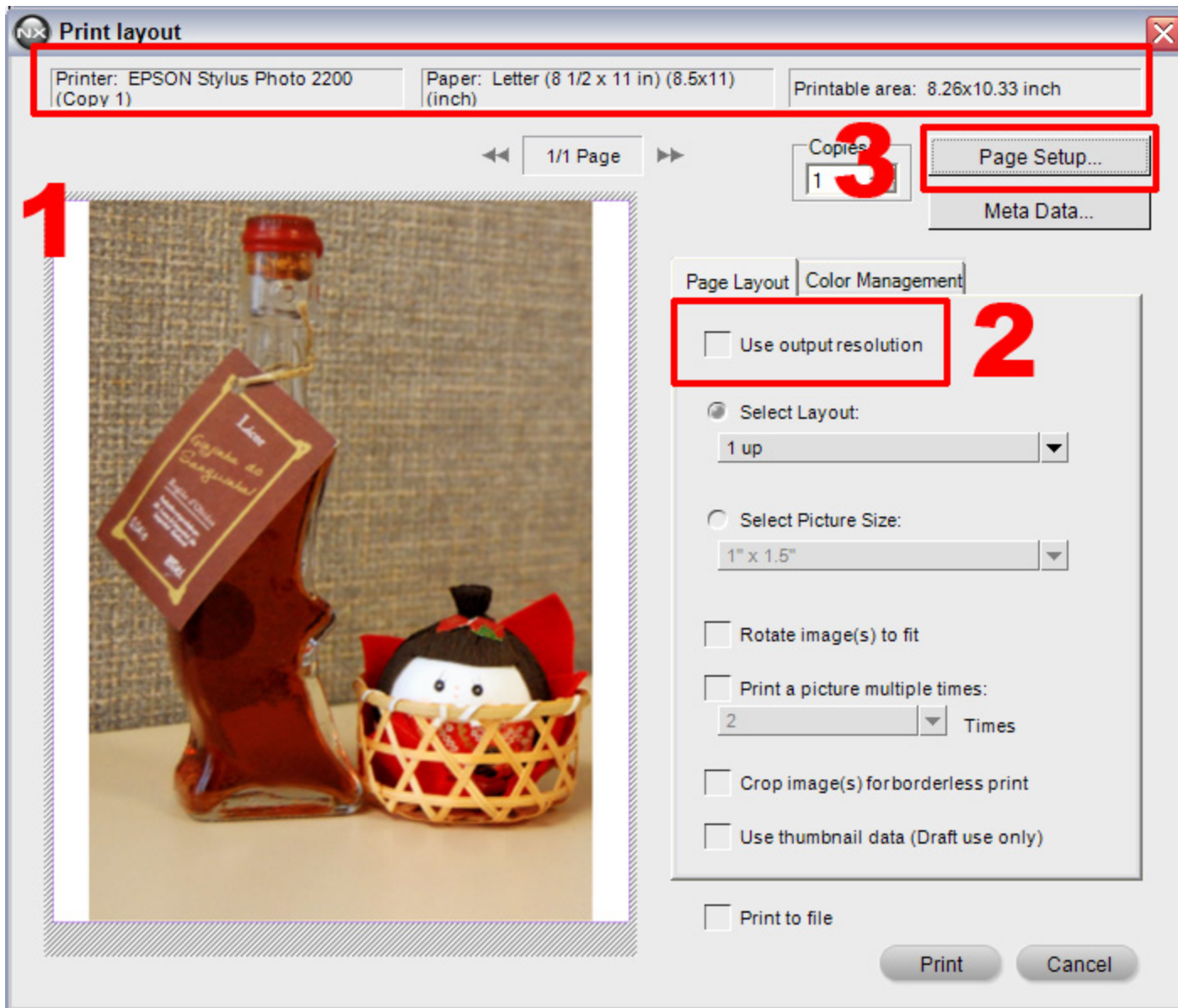


Step 4 - Select "Print..." from the "File" menu.



Step 5 - Specify paper size in the "Print layout" dialog.

- 1) The "Print layout" dialog is displayed.
- 2) Be sure that the "Use output resolution" box is not checked.
- 3) Click the "Page Setup..." button.

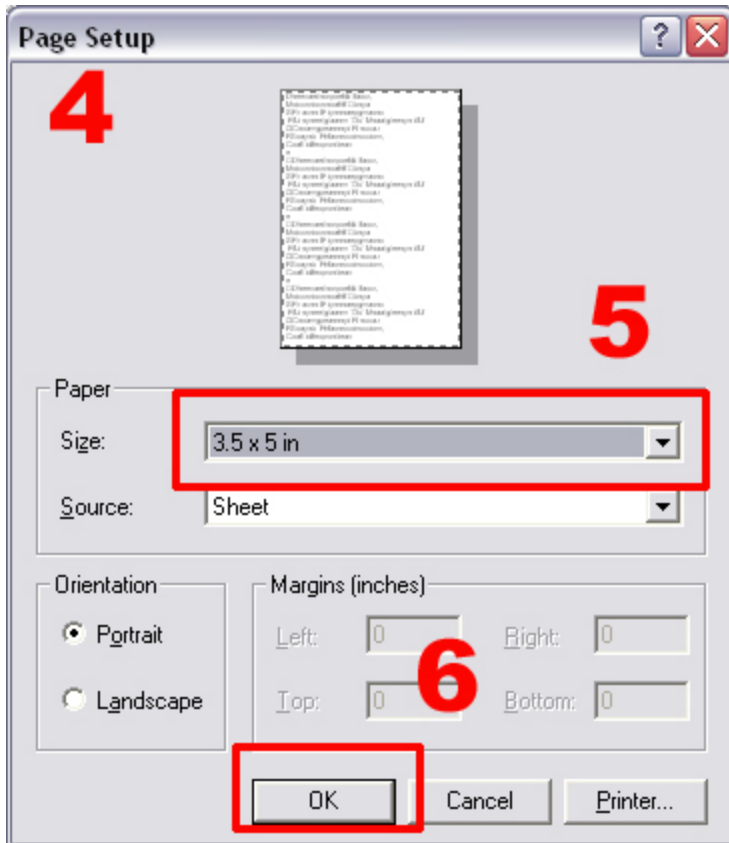


4) The "Page Setup" dialog is displayed.

5) Select the paper size form the "Size" pulldown menu. Here we have selected 3.5" x 5" to print on 3.5" x 5" paper.

6) Click "OK".

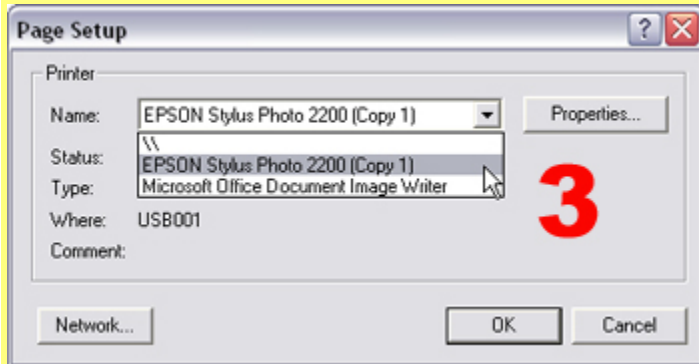
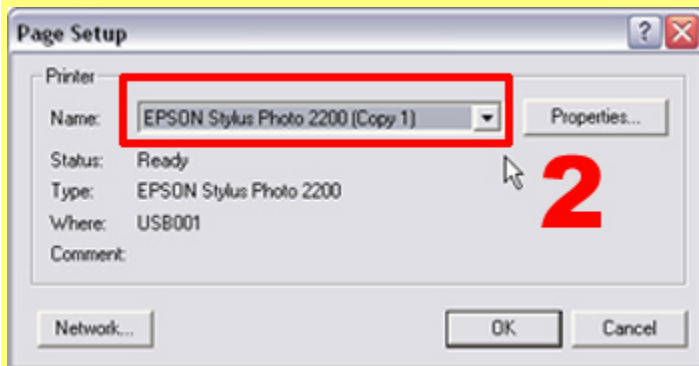
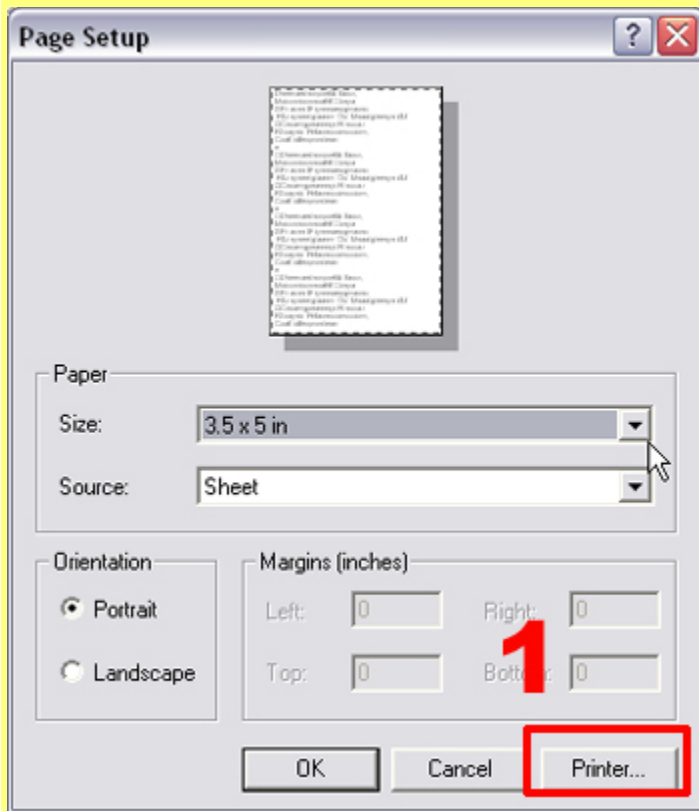
7) The "Print layout" dialog is displayed again and the print settings are reflected in the preview image.



What do I do if the printer I want to use is not displayed?

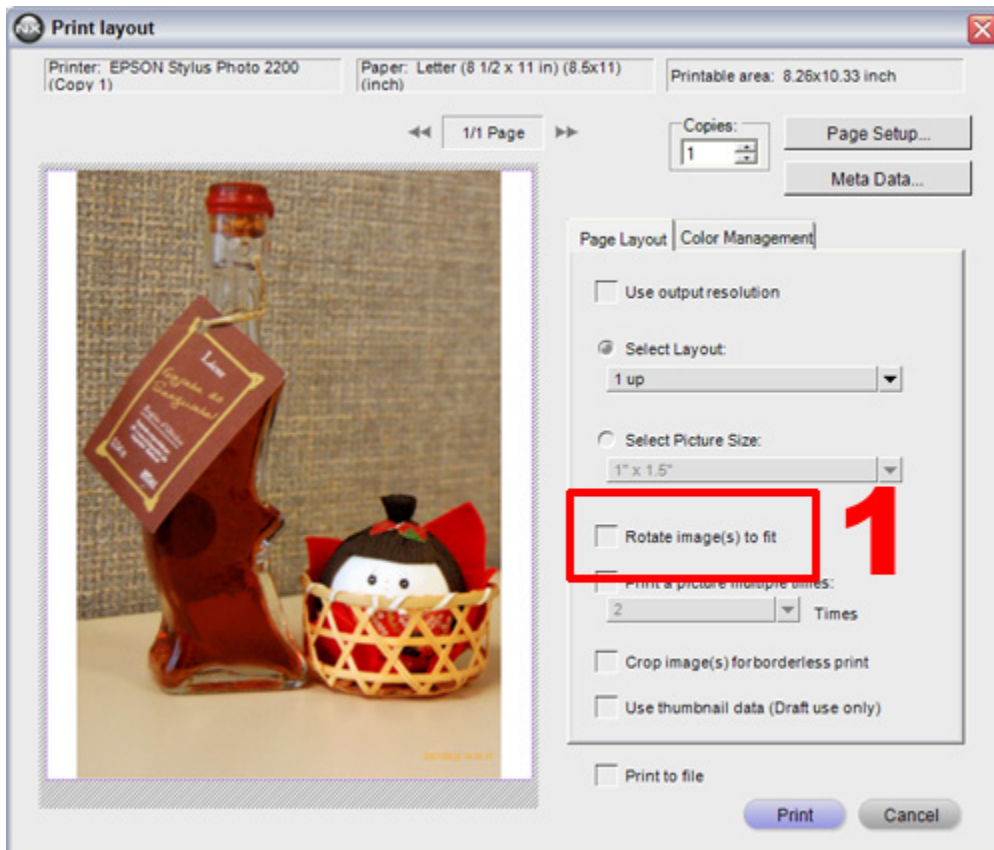
When multiple printers are connected to the computer, the desired printer may not be displayed in the "Print Layout" and "Page Setup" dialogs. Should this occur, follow the instructions below to switch to the desired printer.

- 1) Click the "Printer..." button in the "Page Setup" dialog.
- 2) In the next "Page Setup" dialog window, click the "Name" pulldown menu and
- 3) select the desired printer.
- 4) Click "OK".



Step 6 - Modify print orientation if necessary.

1) Check the "Rotate image(s) to fit" option. Images captured in landscape orientation are rotated 90° so that they are in the same orientation as the paper. This image is already in portrait orientation, which is the same as the printer paper.

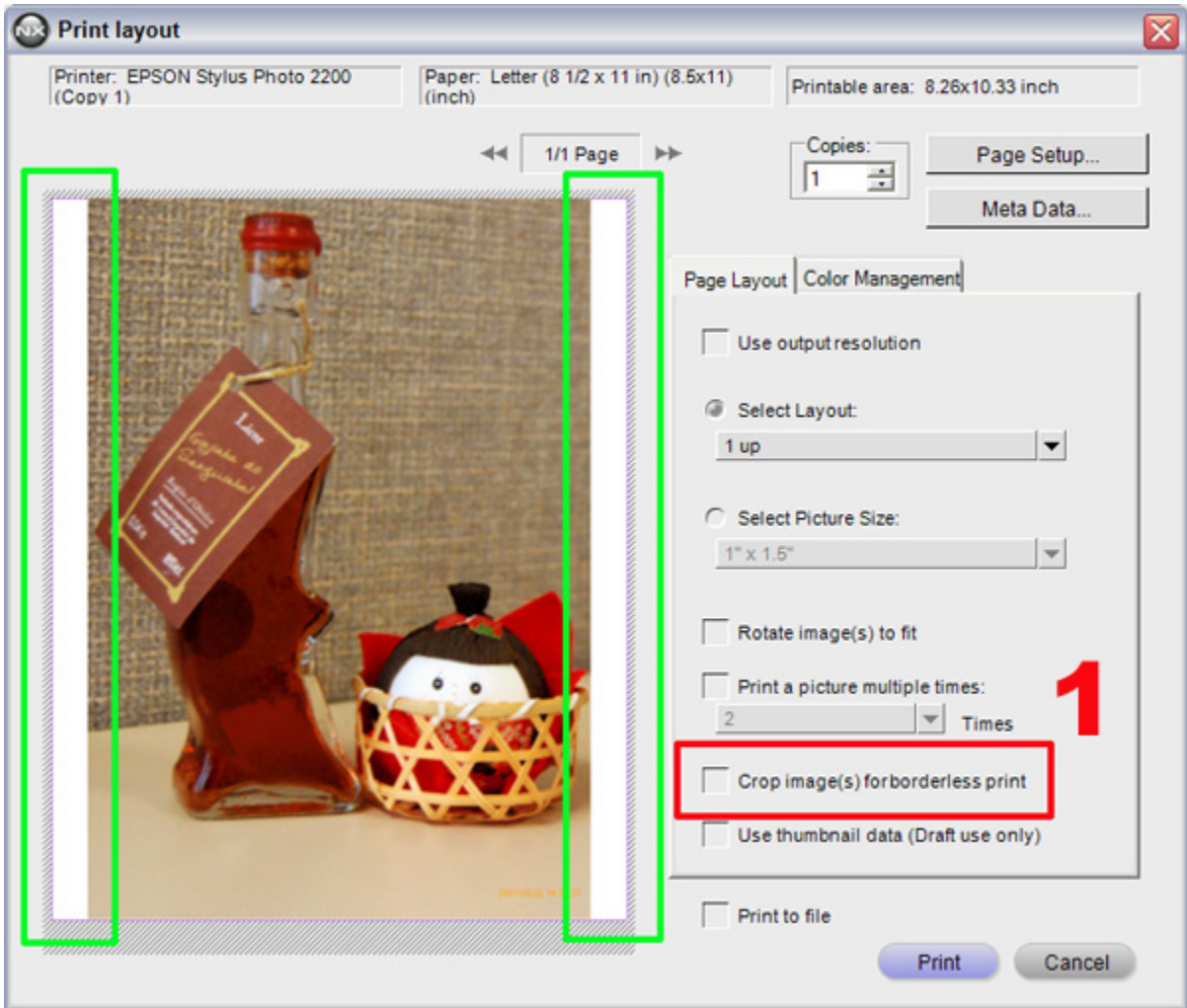


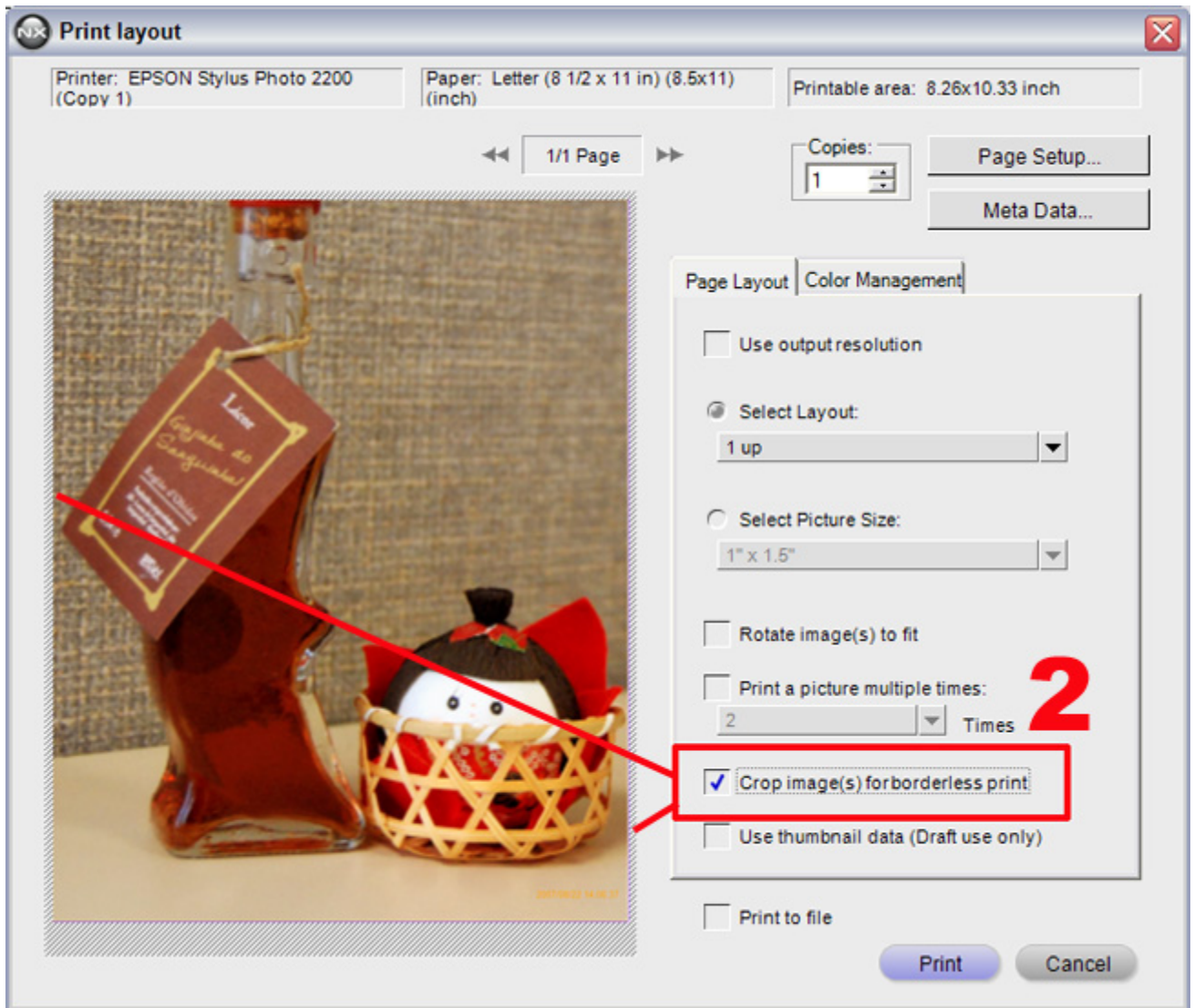
Step 7 - Be sure that the maximum printable area possible with your printer is utilized.

To ensure that the image file fits the maximum printable area, check the "Crop image(s) for borderless print" option. However, portions of the image may be cut off to maximize the printable surface. To prevent portions of the image from being cut off, uncheck the "Crop image(s) for borderless print" option.

1) Check the "Crop image for borderless print"

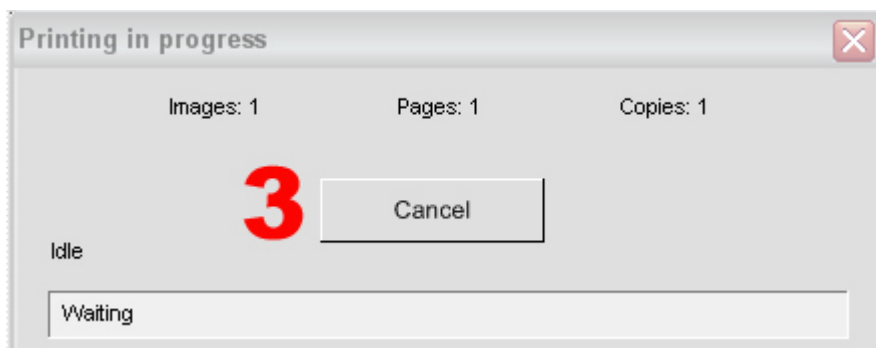
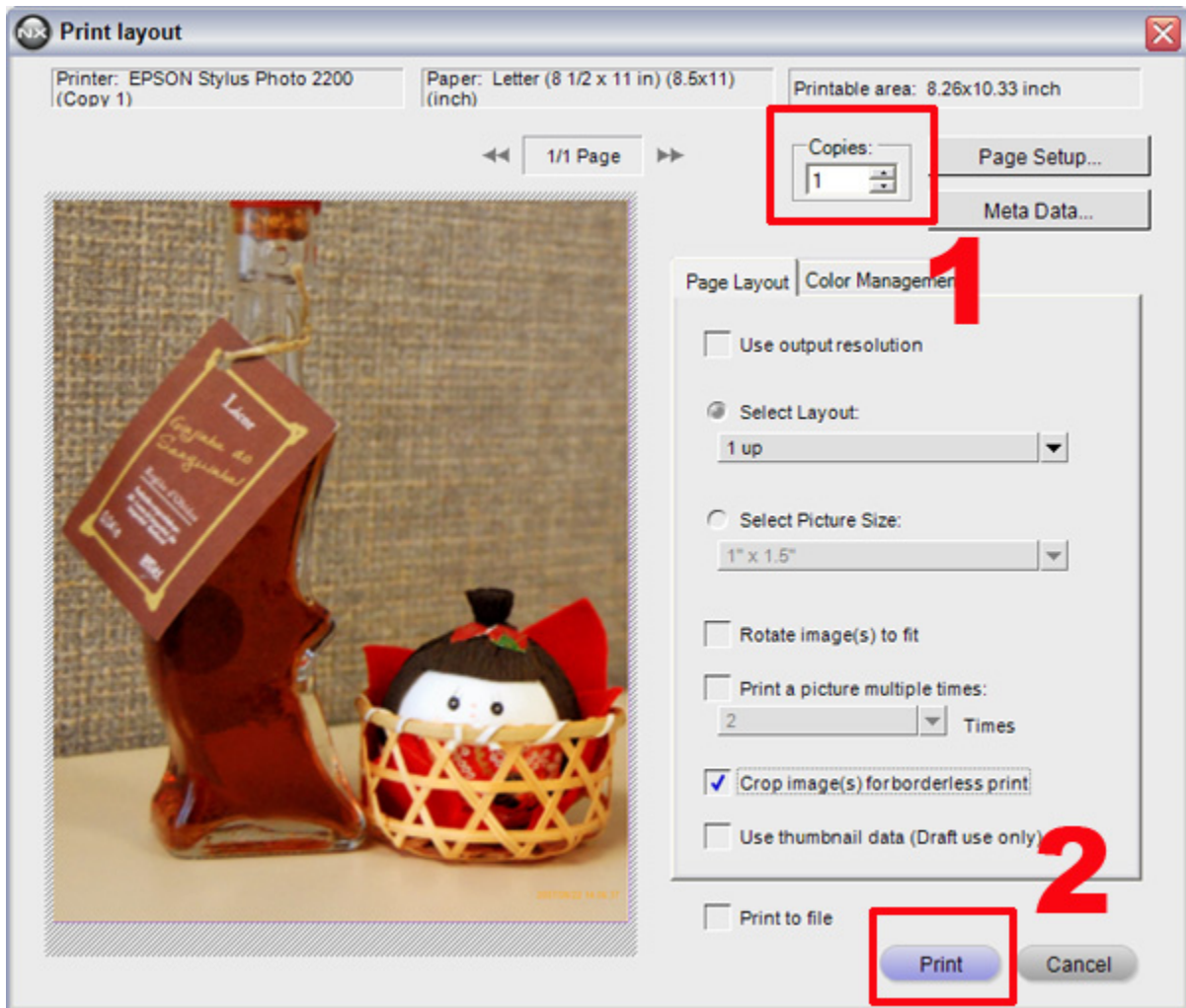
2) Border edges are reduced





Step 8 - Begin printing.

- 1) Confirm the number of copies to be printed.
- 2) Click "Print" to initiate printing.
- 3) The "Printing in progress" dialog is displayed during printing.



Achieving optimum prints.

To print images at the best possible quality, it is important that the paper used is the same paper specified in the printer's

properties or preferences dialog. Before printing, specify the correct paper type or verify that the correct paper type or verify that the correct paper type is already selected.

