

Nikon Capture NX "How To..." Series

Article 23: How to correct a color cast in a JPEG or TIFF image to produce a more natural color.

Purpose: There are different ways we can correct for a color cast situation, where white or gray (achromatic) portions of an image appear blue, or yellow. This situation may be corrected using the "Neutral Control Point" or with a "White Balance" enhancement within Capture NX.

We will discuss correcting a JPEG image, which displays a blue cast, back to its normal natural colors using these different methods.

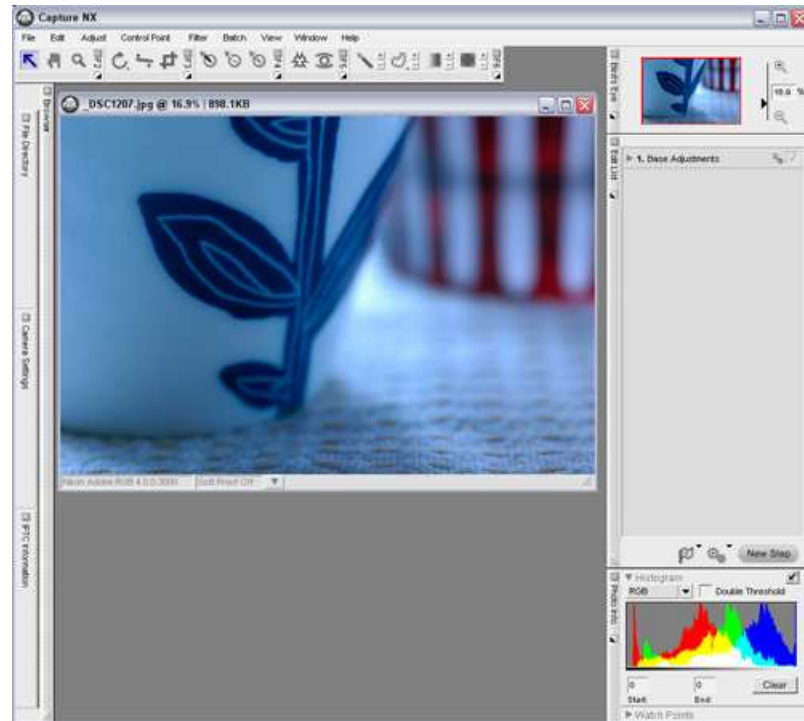
Process:

Step 1 - Open an image.

Step 2 - Apply "Neutral Control Point" enhancement.

Step 3 - Add additional "Neutral Control Point(s)".

Step 1 - This image exhibits a blue cast. We will correct this image to exhibit natural colors.



Step 2 - Apply "Neutral Control Point" enhancement.

1) Click the "Neutral Control Point" tool.

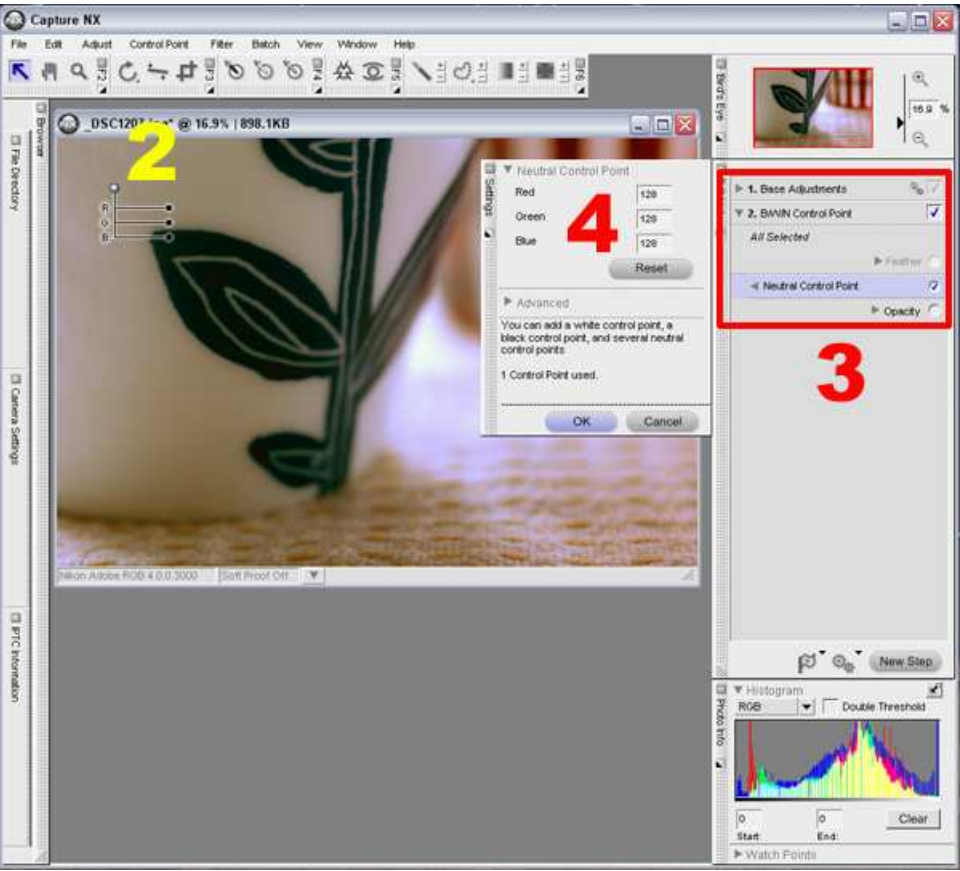


2) Click on the area of the image that should have been originally white or gray (achromatic). A "Neutral Control Point" will appear over the portion of the image that was clicked.

3) A "B/W/N Control Point" step is added to the "Edit List".

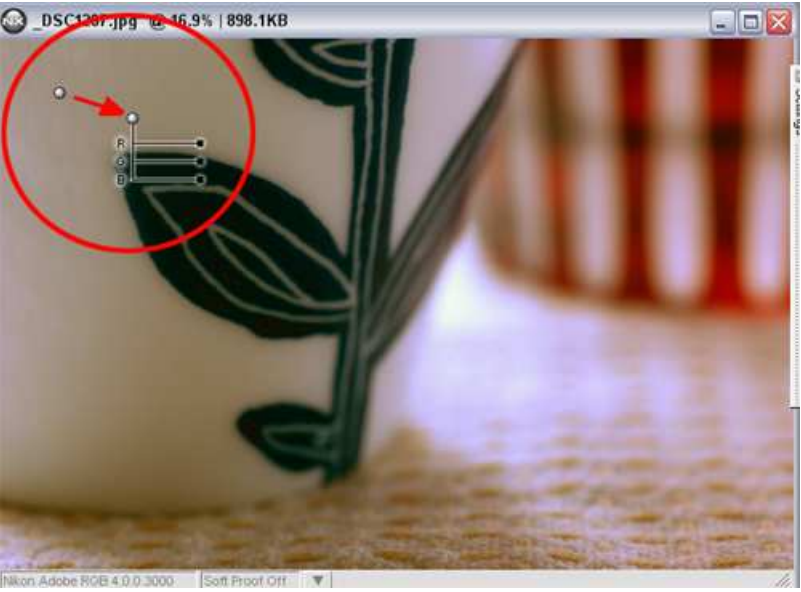
"Neutral Control Point" is displayed under the "B/W/N Control Point" step.

4) At the same time, the "Neutral Control Point" dialog is displayed.



5) When the "Neutral Control Point" is moved, image colors are modified, so drag the "Neutral Control Point" to the position that achieves the most natural colors.

5



Step 3 - Add additional "Neutral Control Point(s)".

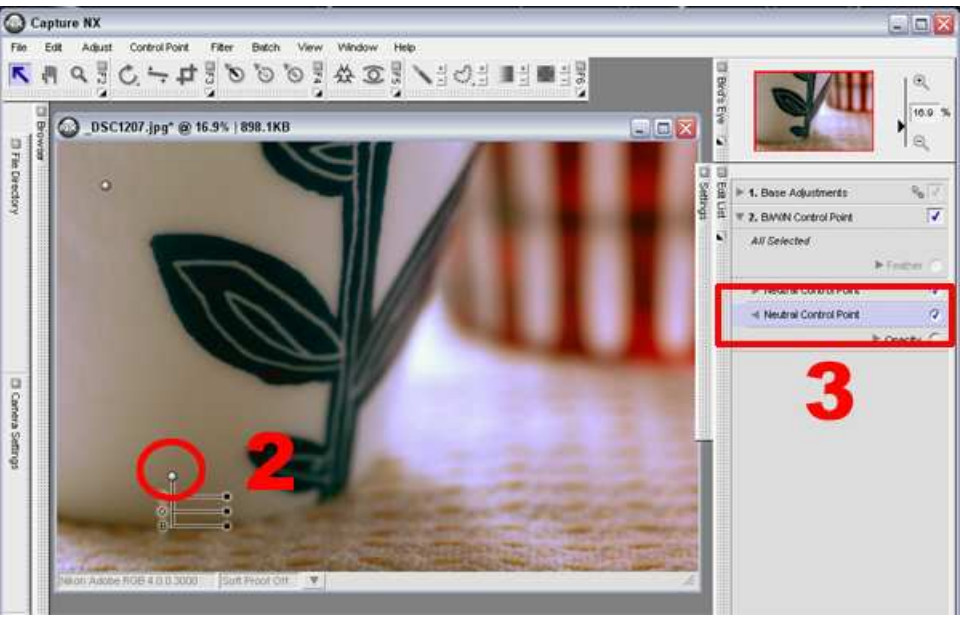
If the results achieved are not sufficient, adding one or more additional "Neutral Control Points" increases enhancement precision.

1) Click the "Neutral Control Point" again.



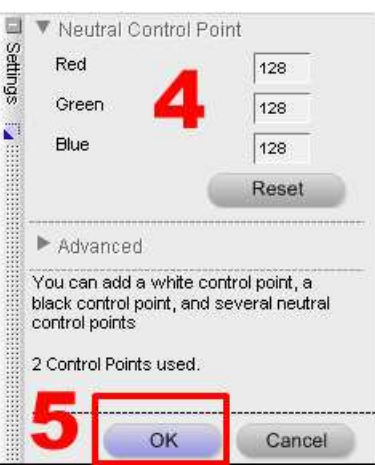
2) Click again on the area of the image that should have been originally white or gray. Reposition the "Neutral Control Point" so that the image appear to have natural colors.

3) A second "Neutral Control Point" is displayed under the "B/W/N Control Point" step in the "Edit List".



4) At the same time, the "Neutral Control Point" dialog is displayed.

5) When the "Neutral Control Point" has been positioned to achieve the best effective color correction, click "OK" in the "Neutral Control Point" dialog



Multiple Neutral Control Points can be used.

An unlimited number of "Neutral Control Points" can be positioned over the image, as explained in Step 3. The effects reflected when multiple "Neutral Control Points" are used are the result of the averaging of all "Neutral Control Point" enhancement values.

Try the Black and White Control Points as well.

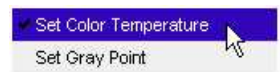
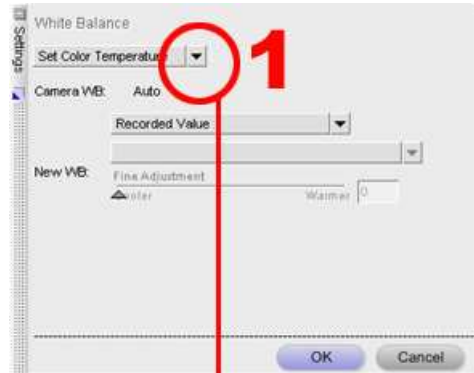
When enhancement or correction using "Neutral Control Points" is not satisfactory, the additional use of "White Control Points" or "Black Control Points" is recommended.

Correction using "White Balance" enhancement:

When working with RAW NEF images, color cast can be easily corrected using the "White Balance" item under "Camera Adjustments" in the "Edit List's 1.Base Adjustments" step. Here, we will introduce two methods for using this feature.

1) Set Color Temperature:

When "Set Color Temperature" is selected from the pull-down menu in the "White Balance" dialog, color cast can be corrected by modifying the light source or fine-tuning color temperature.



2) Set Gray Point:

Color cast can also be corrected by selecting "Set Gray Point" in the "White Balance" dialog.

- 1) Select "Set Gray Point" from the pull down menu.
- 2) Select "Use a single point" or "Marquee Sample" in the "Sample Gray Point" area. Here we have selected "Use a single point".
- 3) Click "Start".
- 4) Color cast enhancement is applied by clicking on the area of the image that should have been originally white or gray. To re-sample the gray point, click the "Reset" button, click "Start" again, and click on the image again.
- 5) Click OK.

