

## Nikon Capture NX "How To..." Series

---

### Article 29 - How to print an image without margins. (Borderless print)

---

**Purpose:** Using the "Print" option for "Borderless" print, images can be printed without margins. We will demonstrate with a 5x7 inch print.

---

**NOTE:** Your printer must support borderless printing. This explanation is based on operation under Windows XP. Dialog display and details may differ depending upon your system.

---

#### Process:

**Step 1** - Open an image you would like to print.

**Step 2** - Select "Print..." from the "File" menu.

**Step 3** - Specify paper size in the "Print layout" dialog.

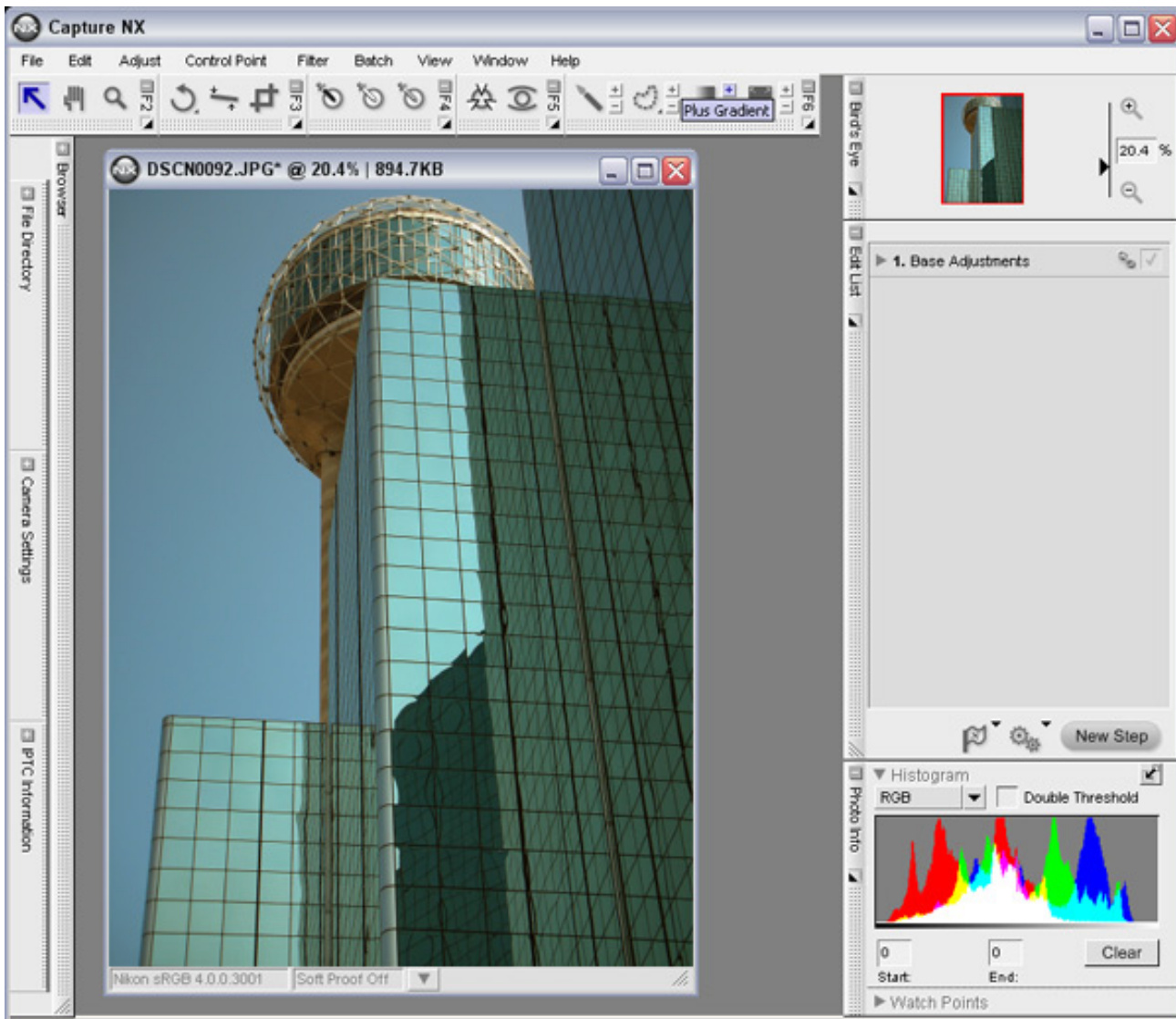
**Step 4** - Check "Crop image for borderless print".

**Step 5** - Begin printing.

---

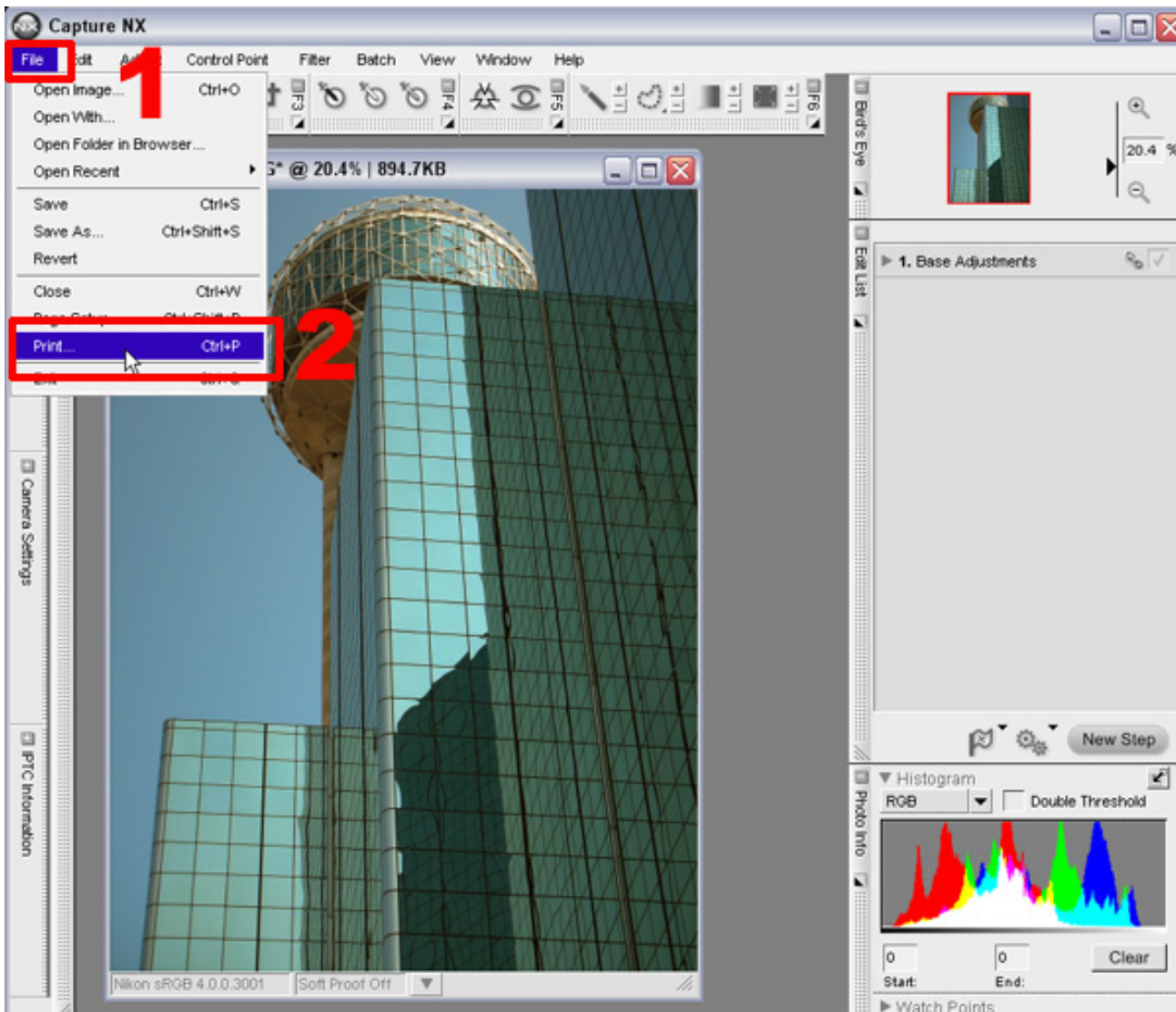
#### Step 1 - Open the image you would like to print.

Before attempting to print, be sure that the printer is connected to the computer, that paper is loaded in the printer, and that the printer is on. Open the image you would like to print.



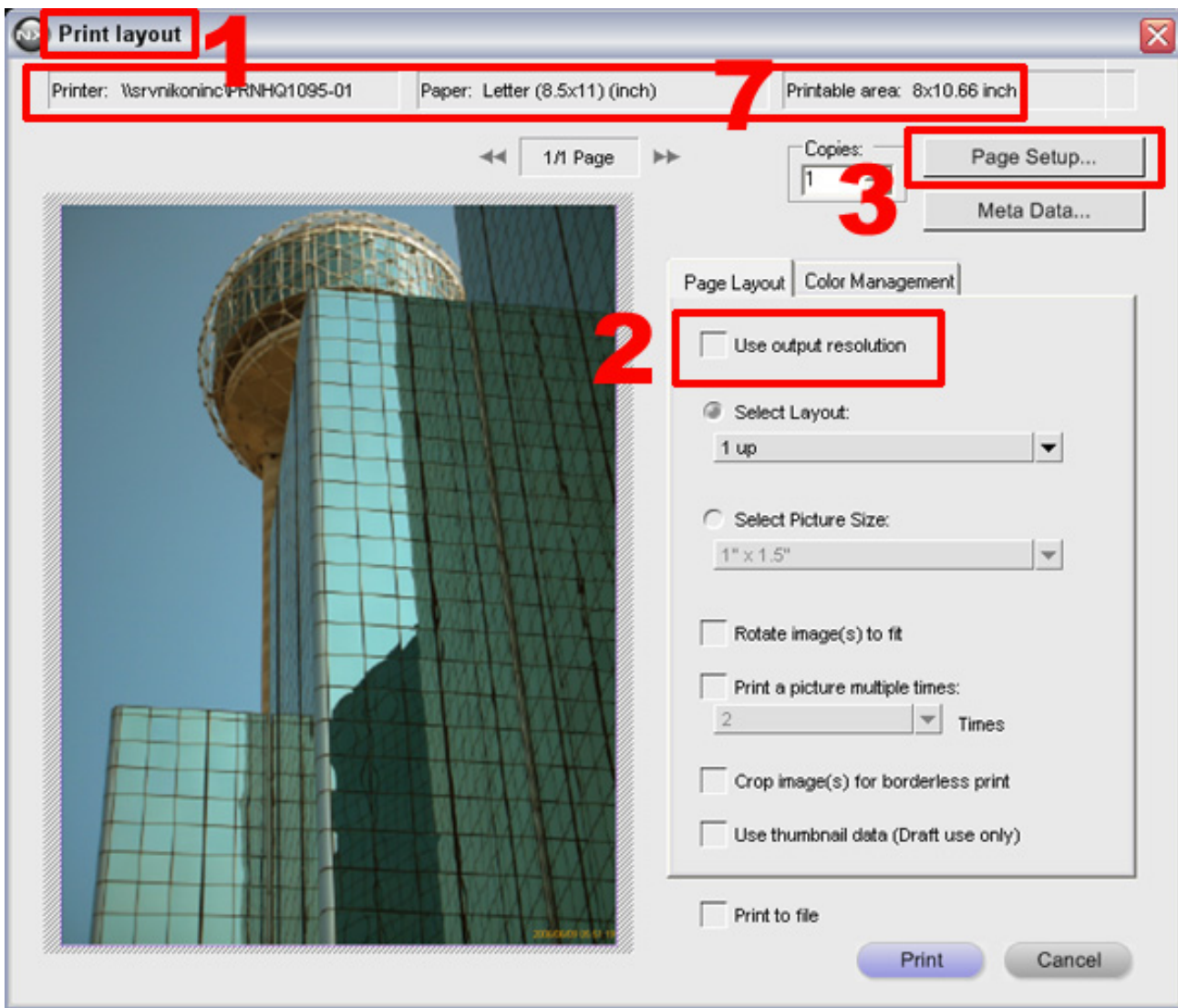
## Step 2 - Select "Print..." from the "File" menu.

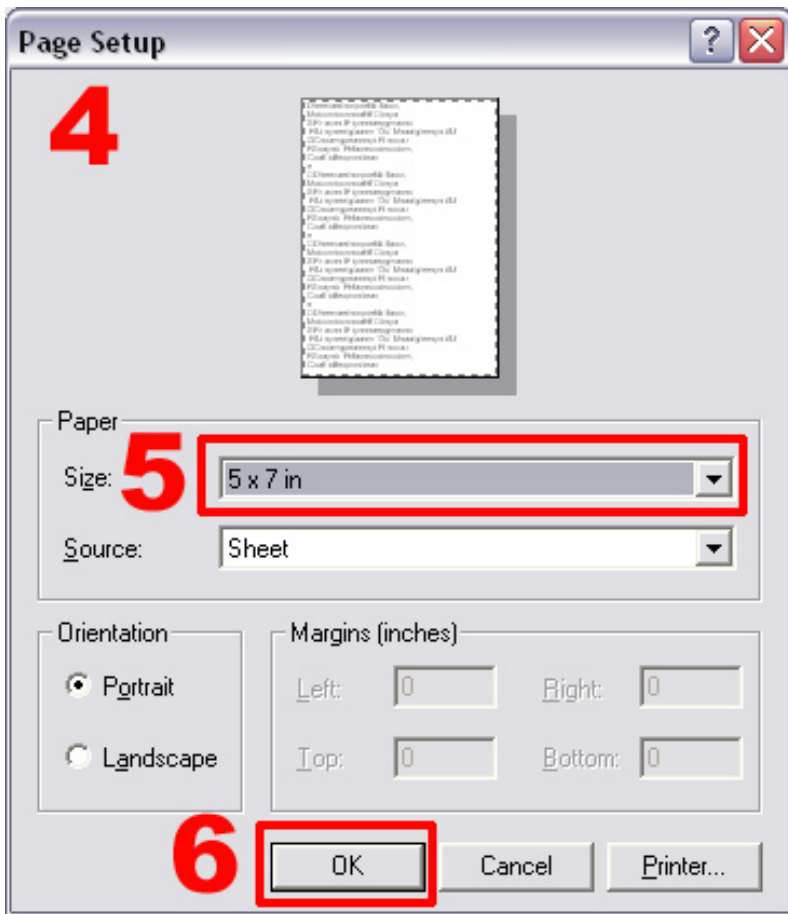
- 1) Click "File", and
- 2) select "Print"



### Step 3 - Specify the paper size in the "Print..." layout dialog.

- 1) The "Print layout" dialog is displayed.
- 2) Be sure that the "Use Output Resolution" option is NOT checked.
- 3) Click the "Page Setup..." button.
- 4) The "Page Setup" dialog is displayed again and the print settings are reflected in the preview image.
- 5) Select the paper size from the "Size" pulldown menu. Here we have selected 5 x 7 in.
- 6) Click "OK".
- 7) The "Print layout..." dialog is displayed again and the print settings are reflected in the preview image.

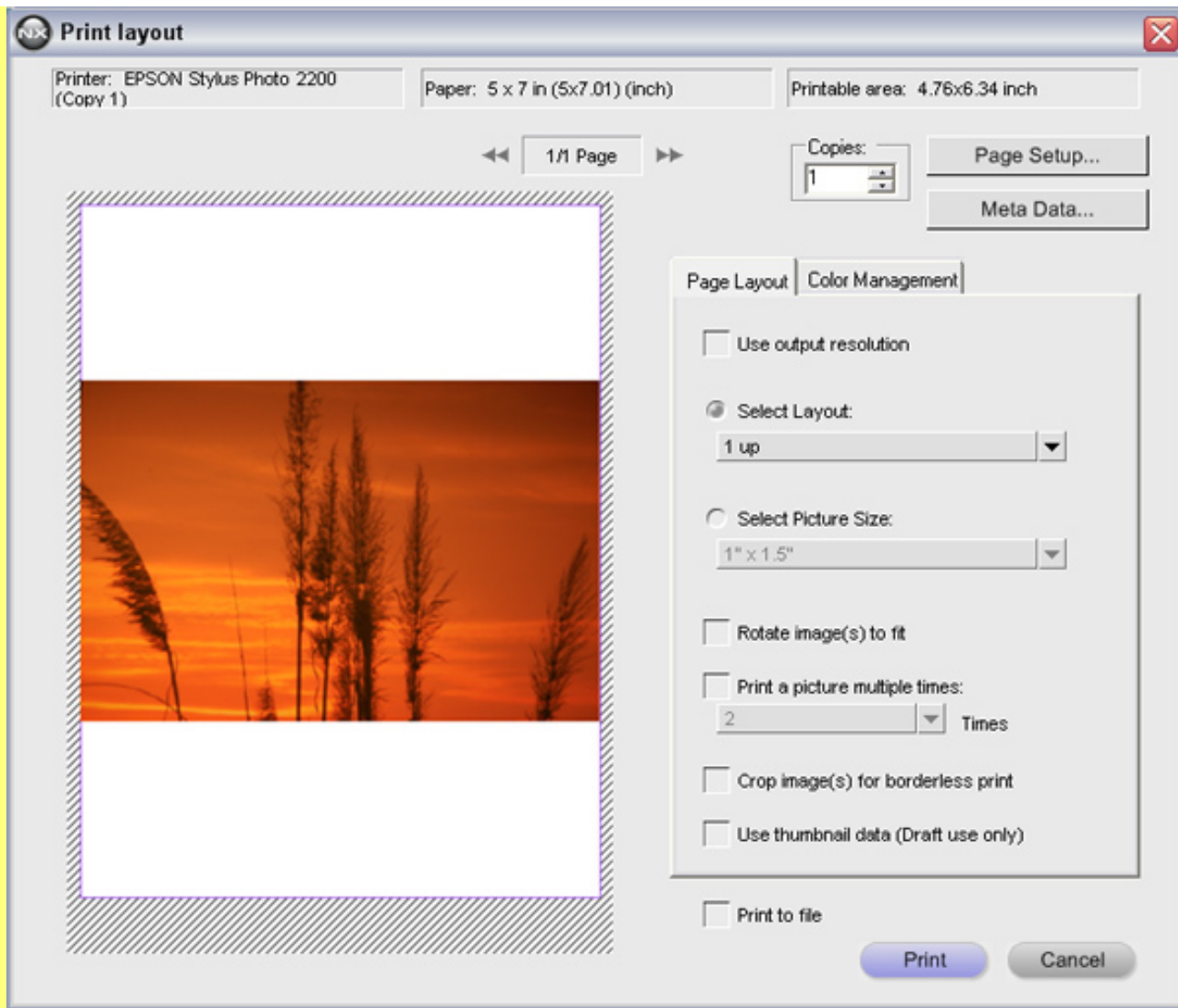




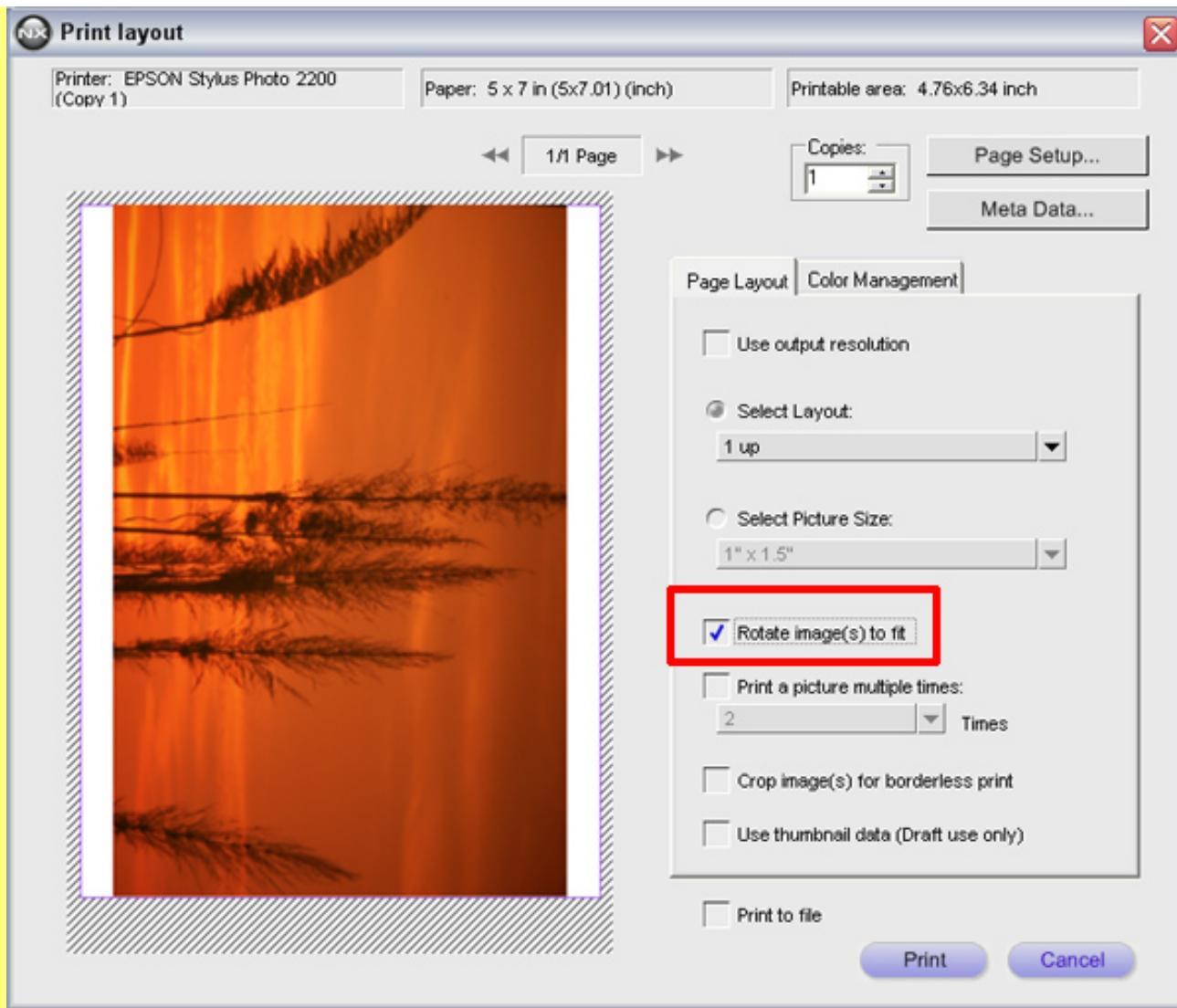
### Correlating image orientation and paper orientation:

If image orientation (portrait or landscape) and paper orientation differ this can be adjusted in the "Print layout" dialog. Check the "Rotate image(s) to fit" option to match image orientation to paper orientation.





**If image orientation and paper orientation differ, printed images will have very large margins.**

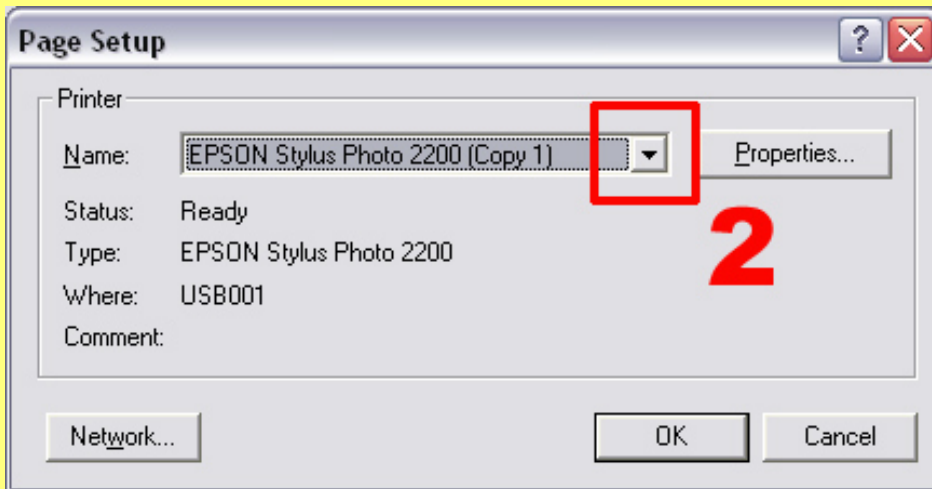
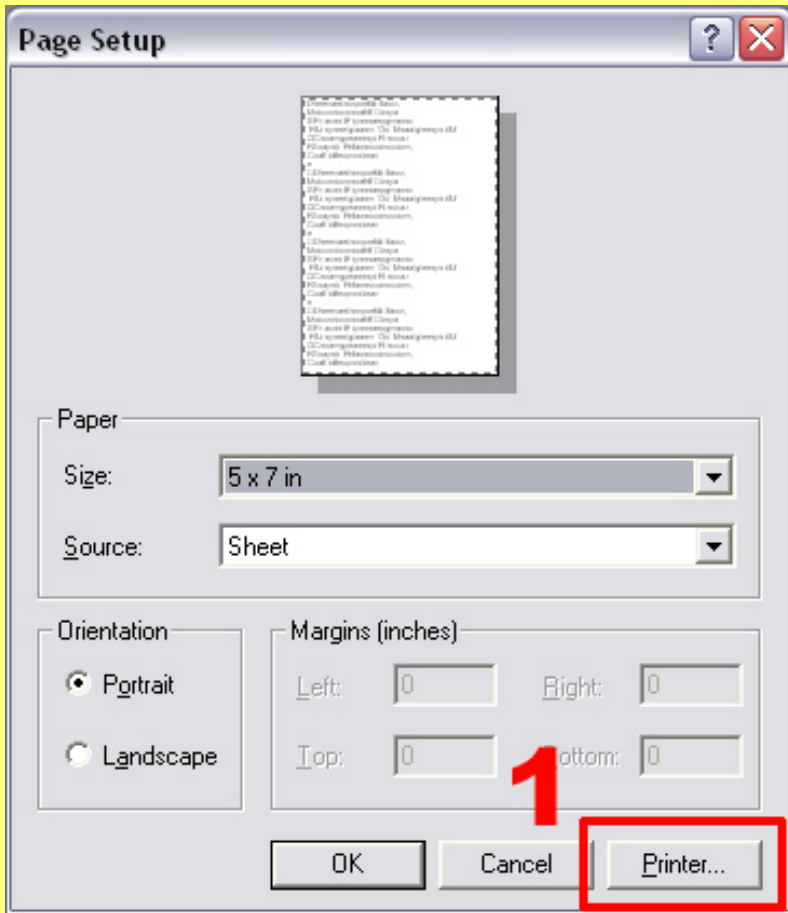


Check the "Rotate images to fit" option to match orientation to paper orientation.

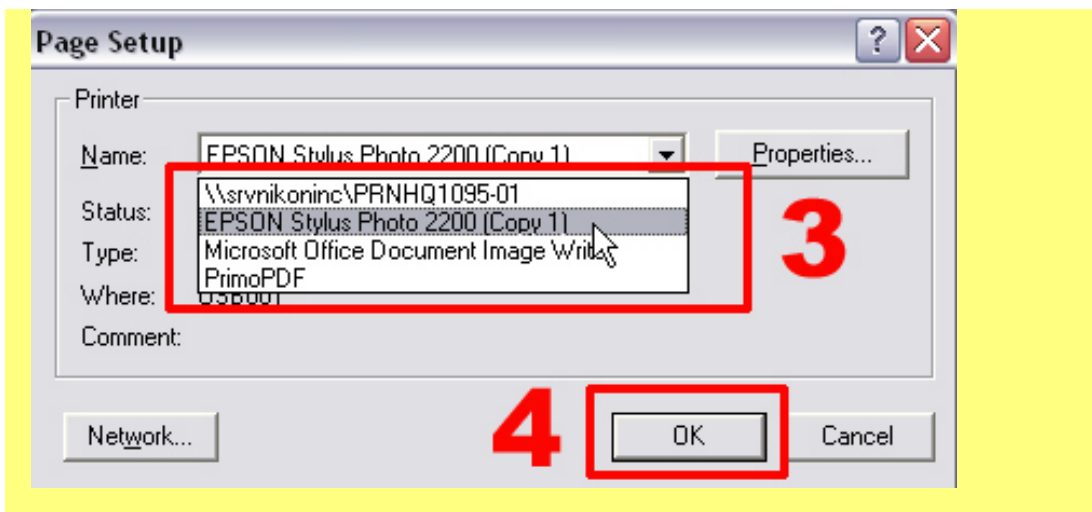
### What do I do if the printer I want to use is not displayed?

When multiple printers are connected to the computer at the same time, the desired printer may not be displayed in the "Print layout" and "Page setup" dialogs. Should this occur, follow the instructions below to switch to another printer.

- 1) Click the "Printer..." button in the "Page setup" dialog.
- 2) In the next "Page setup" dialog displayed, click the "Name" pulldown menu and select the desired printer.
- 3) Choose the printer you want to print to.
- 4) Click "OK".

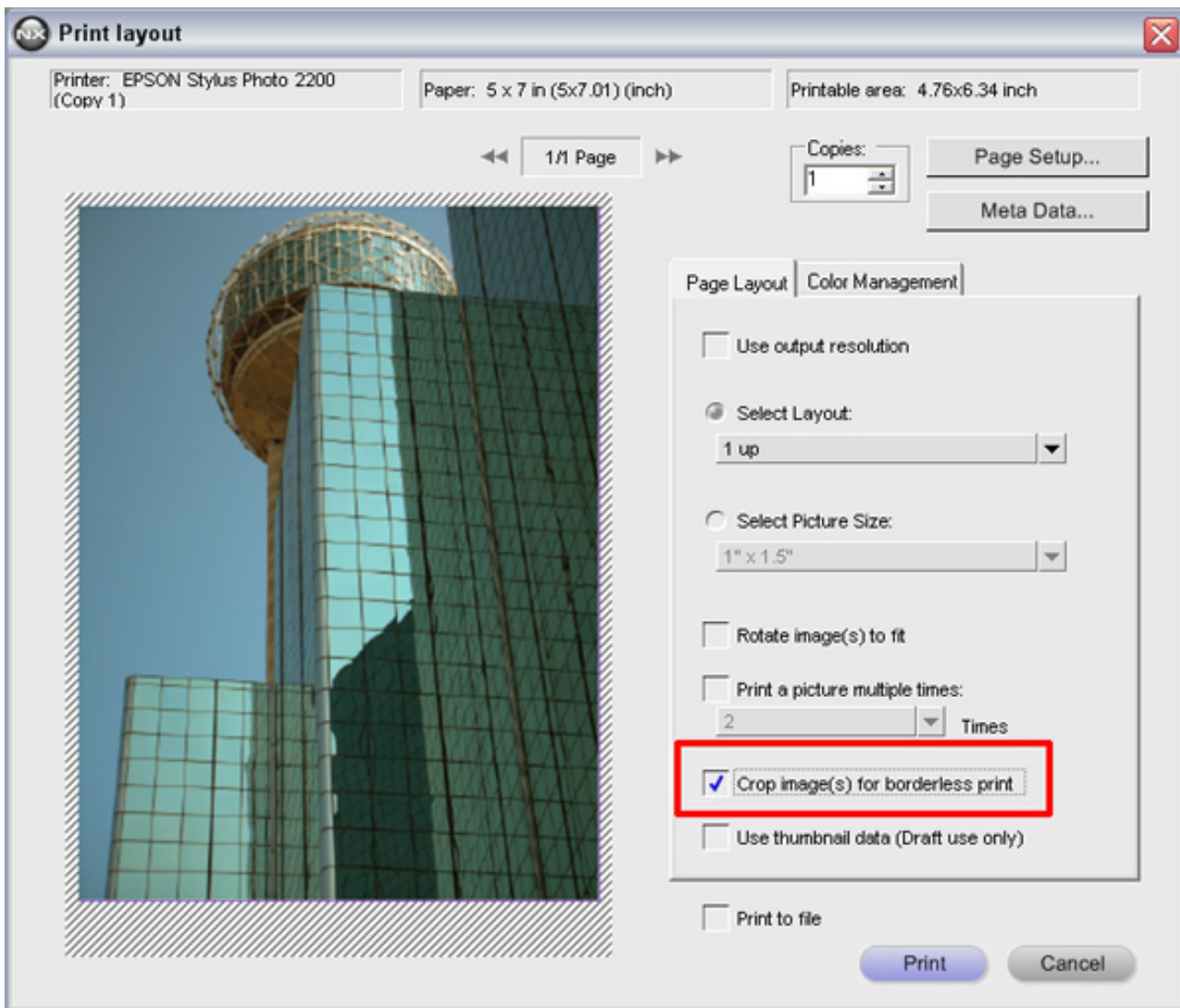






**Step 4** - Check the "Crop image(s) for borderless print".

To print images without margins, check the "Crop image(s) for borderless print" option.



**Step 5** -Begin printing

1) Confirm the number of copies to be printed.

- 2) Click "Print".
- 3) The "Page Setup" dialog is displayed.
- 4) Click the "Properties..." button.
- 5) When the printer dialog is displayed, click the "Main" tab.
- 6) Check the "Borderless" option.
- 7) Click "OK" to return to the "Page Setup" dialog.
- 8) Click "OK" in the "Page Setup" dialog to initiate printing.
- 9) The "Printing in progress" dialog.

**NOTE:** With borderless printing, portions of the image may be cut off to maximize the printable surface. Printer properties may vary with each printer. For details regarding your printer, please refer to its reference manual.

