

# Nikon Capture NX "How To..." Series

---

**Article 14:** How to use the different printing options available.

---

## **Process:**

**Step 1** - Open an image and select Print... from the file menu.

**Step 2** - Specify paper size in the Print layout dialog.

**Step 3** - Modify print orientation if necessary.

**Step 4** - Enable or Disable printing of photo information with images as required.

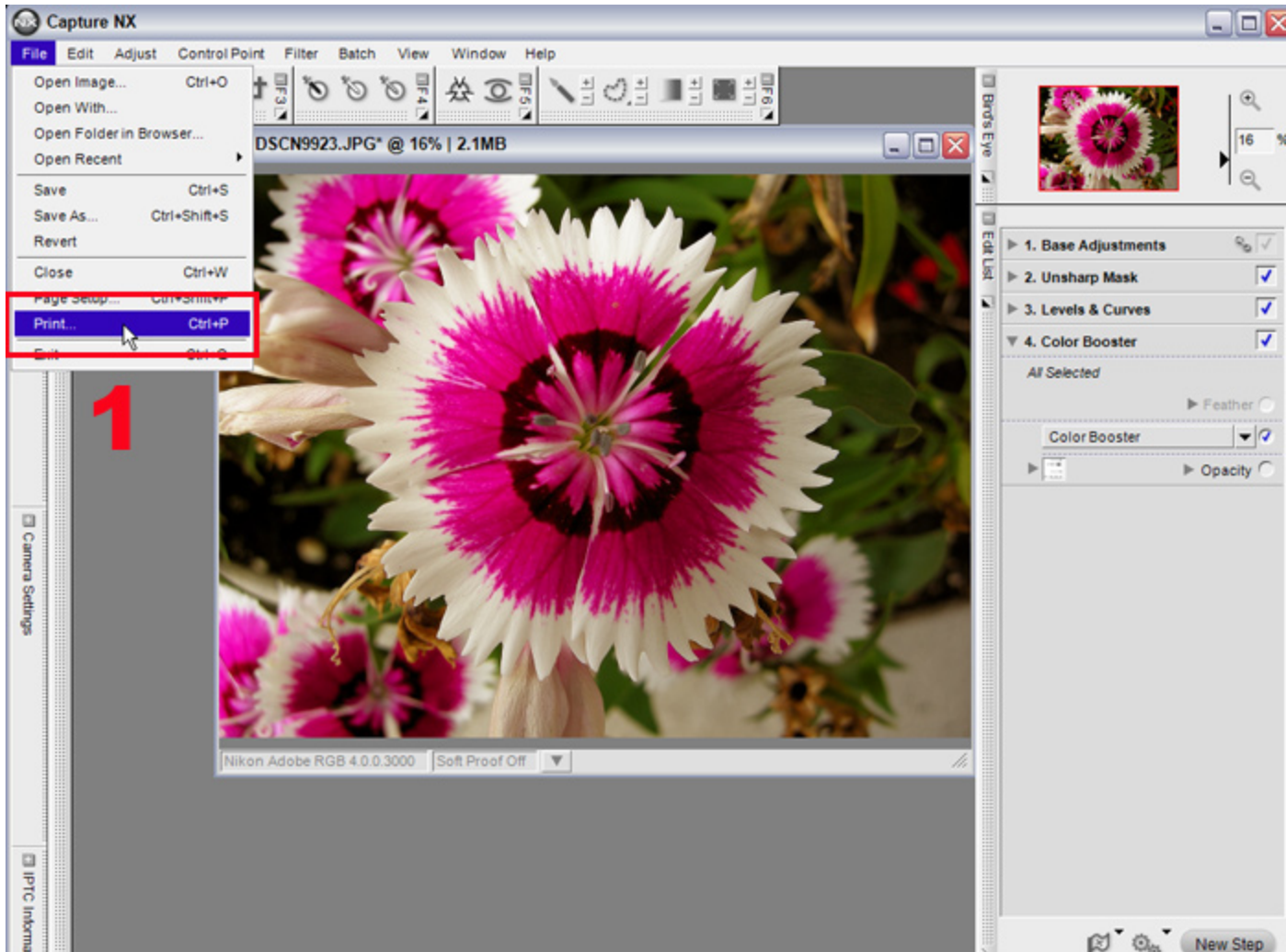
**Step 5** - Begin printing.

---

**Step 1** - Open an image and select "Print..." from the "File" menu.

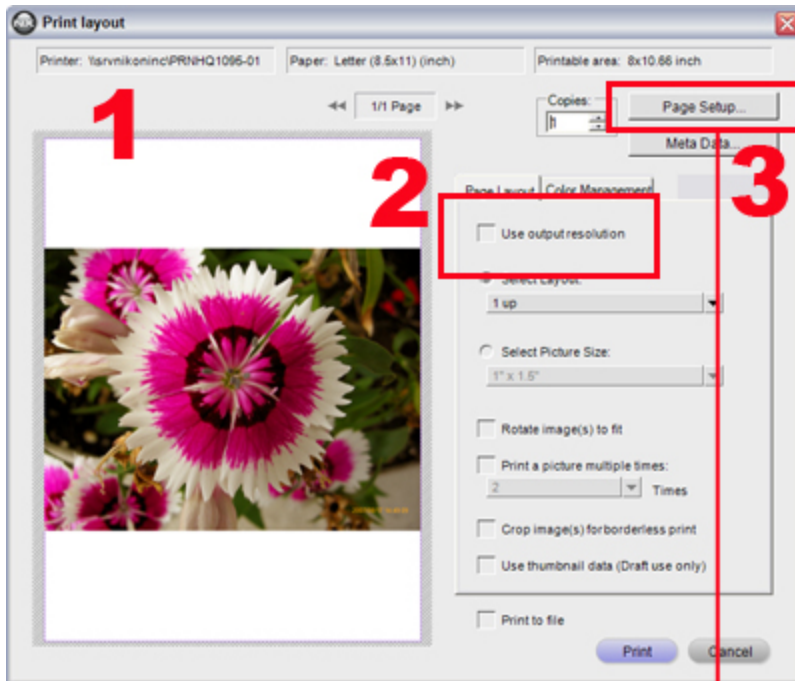
***Before attempting to print, be sure that the printer is connected to the computer, that paper is loaded in the printer, and that the printer is on and ready.***

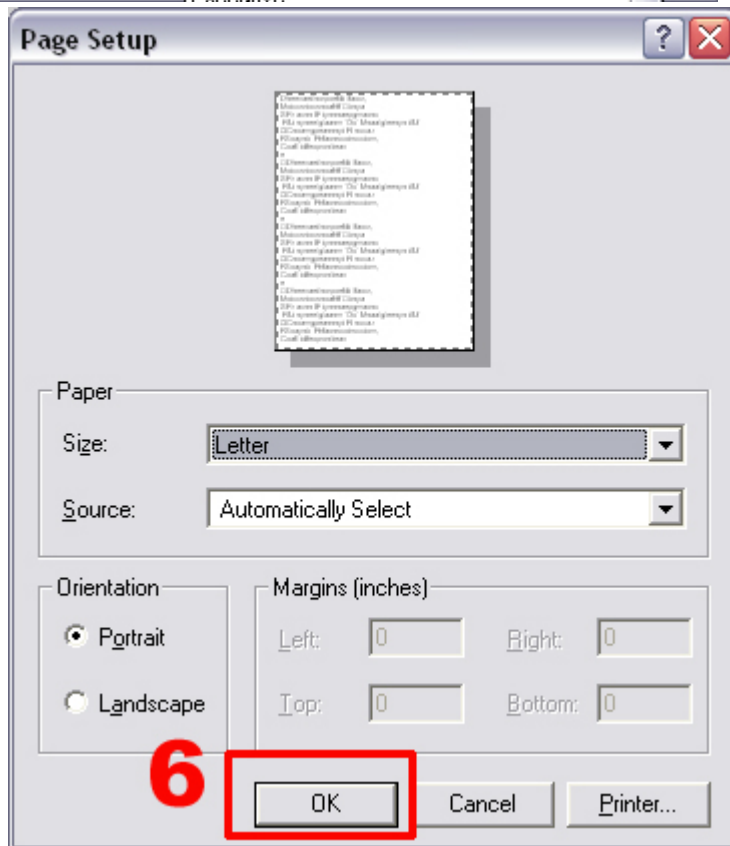
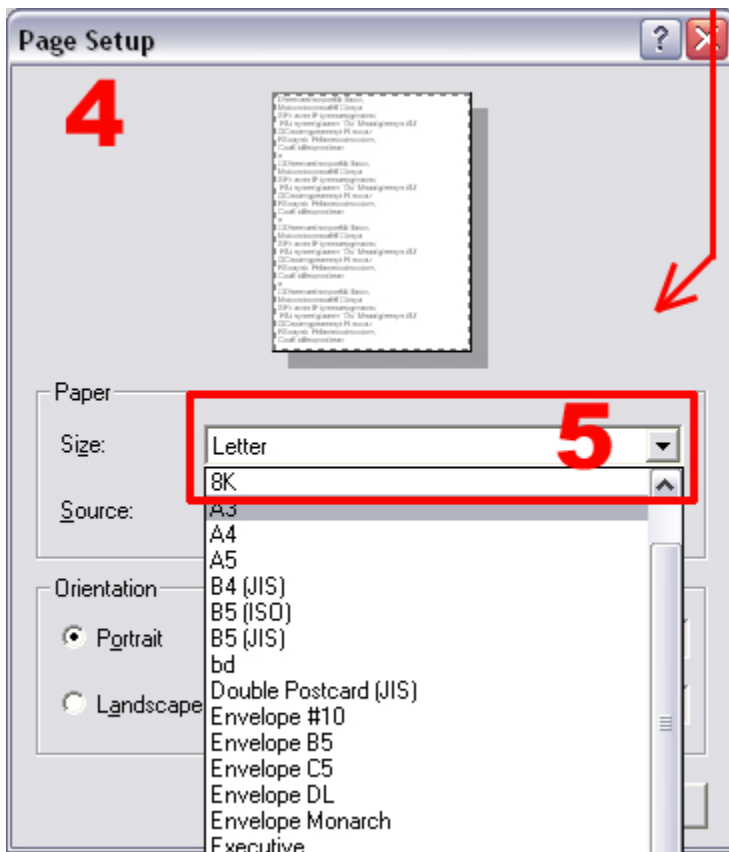
1) Open an image and select "Print..." from the "File" menu.



**Step 2** - Specify a paper size in the "Print layout" dialog.

- 1) The "Print layout" dialog is displayed, after **Step 1**.
- 2) Be sure that the "Use Output Resolution" box is not checked. If it is, clear the checkbox.
- 3) Click the "Page Setup..." button.
- 4) The "Page Setup" dialog is displayed.
- 5) Select the paper size from the "Size" pulldown menu. Here we have selected Letter size paper, typical printer size 8 1/2" x 11". Many other sizes are available here, which you may select depending on your printer capabilities.
- 6) Click "OK" to return to the "Print" dialog.

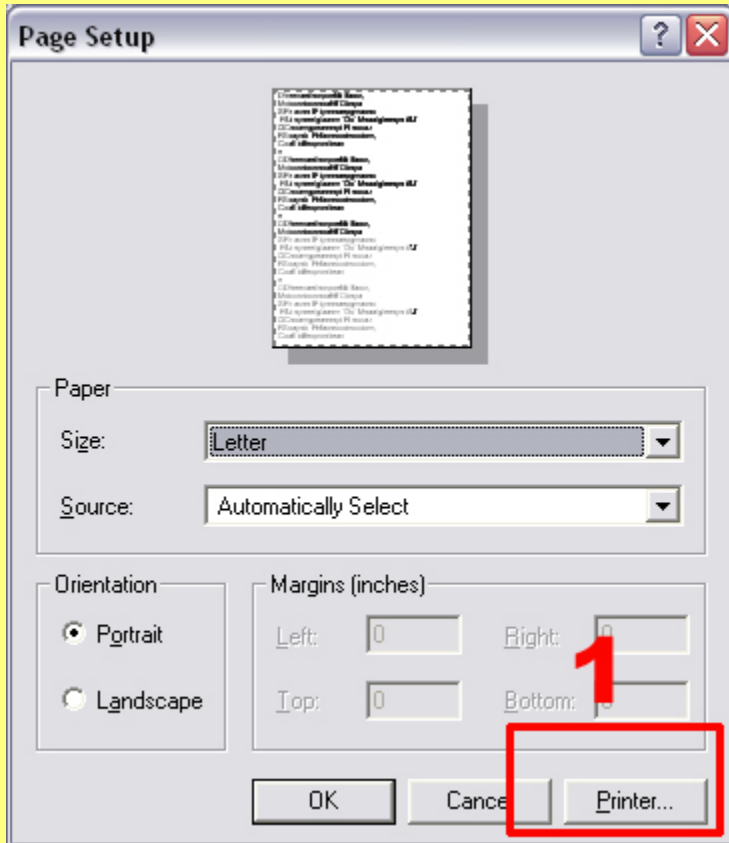




## What do I do if the printer I want to use is not displayed?

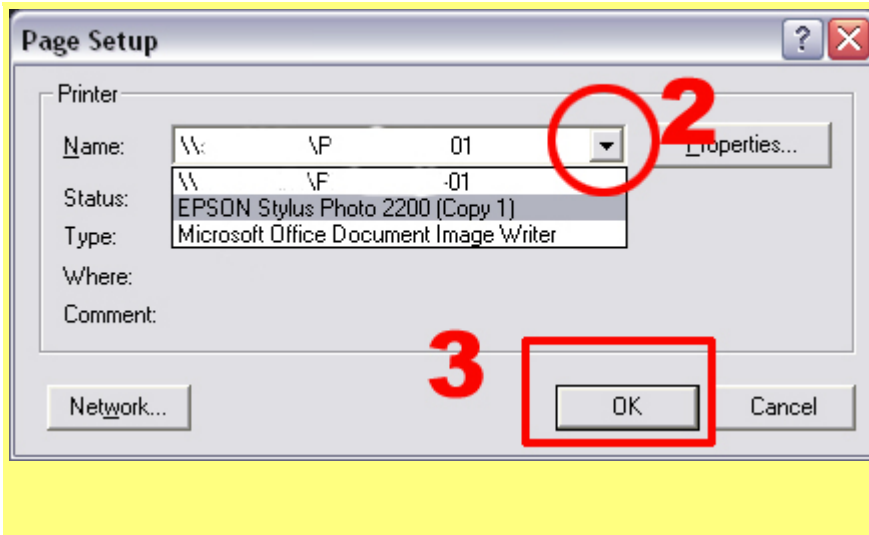
When multiple printers are connected to the computer, the desired printer may not be displayed in the "Print layout" and "Page Setup" dialog. Should this occur, follow the instructions below to switch to another printer.

1) Click the "Printer..." button in the "Page Setup" dialog.



2) In the next "Page Setup" dialog displayed, click the "Name" pulldown menu and select the desired printer.

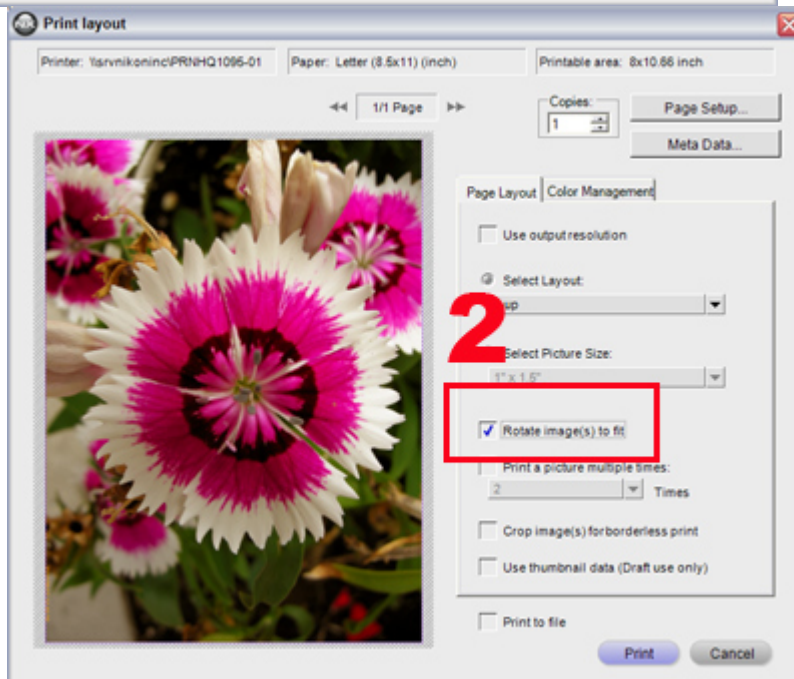
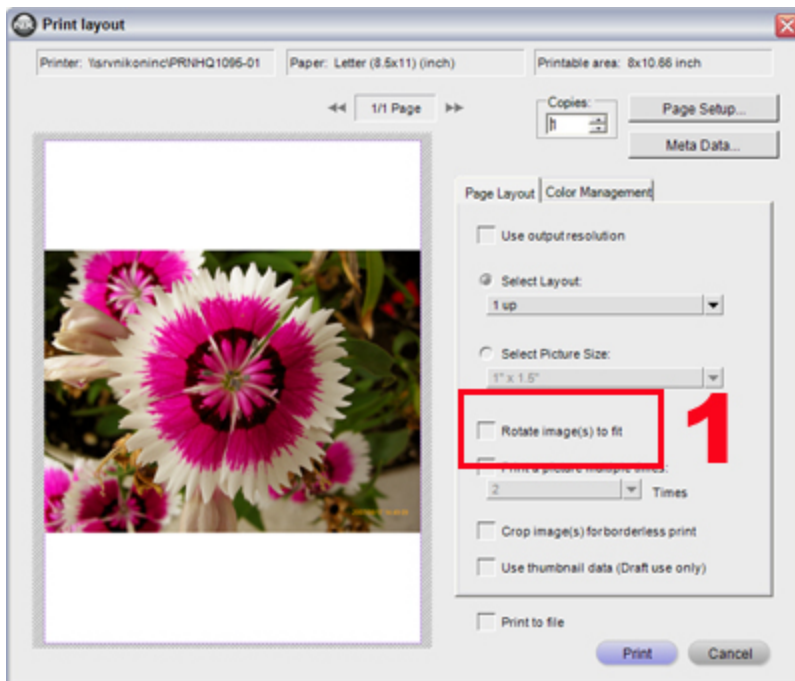
3) Click "OK".



**Step 3** - Modify Print orientation if necessary.

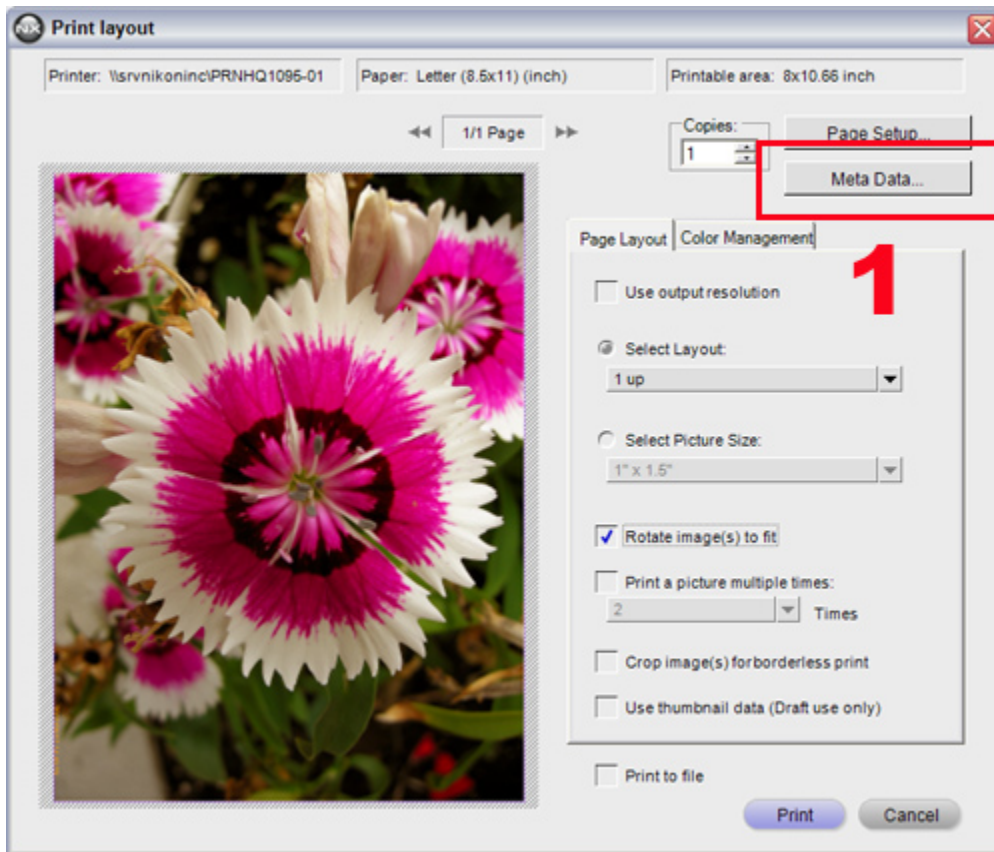
1) Check the "Rotate image(s) to fit" option.

2) Images captured in landscape orientation are rotated 90° so that they are in the same orientation as the paper.



**Step 4** - Enable or disable printing of photo information with images as required.

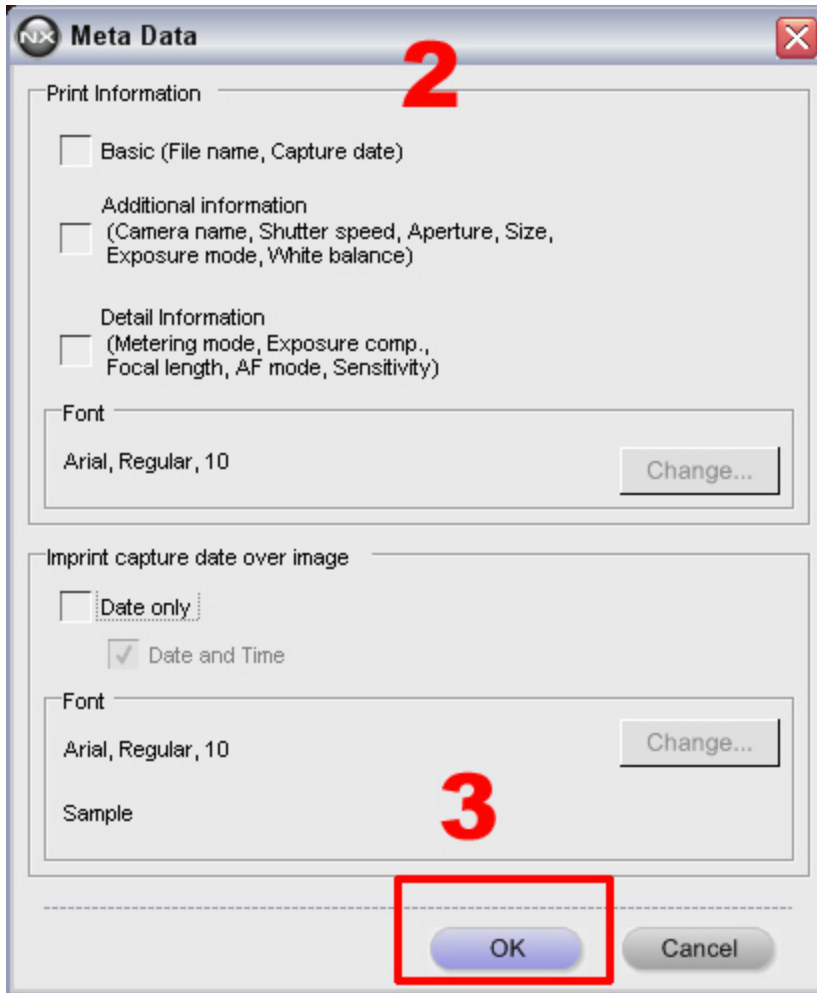
1) Click the "Meta Data..." button.



2) The "Meta Data" dialog is displayed. Check the box(es) corresponding to the information you would like to have printed with images. We will not print information with our images here, so we have left the box unchecked.

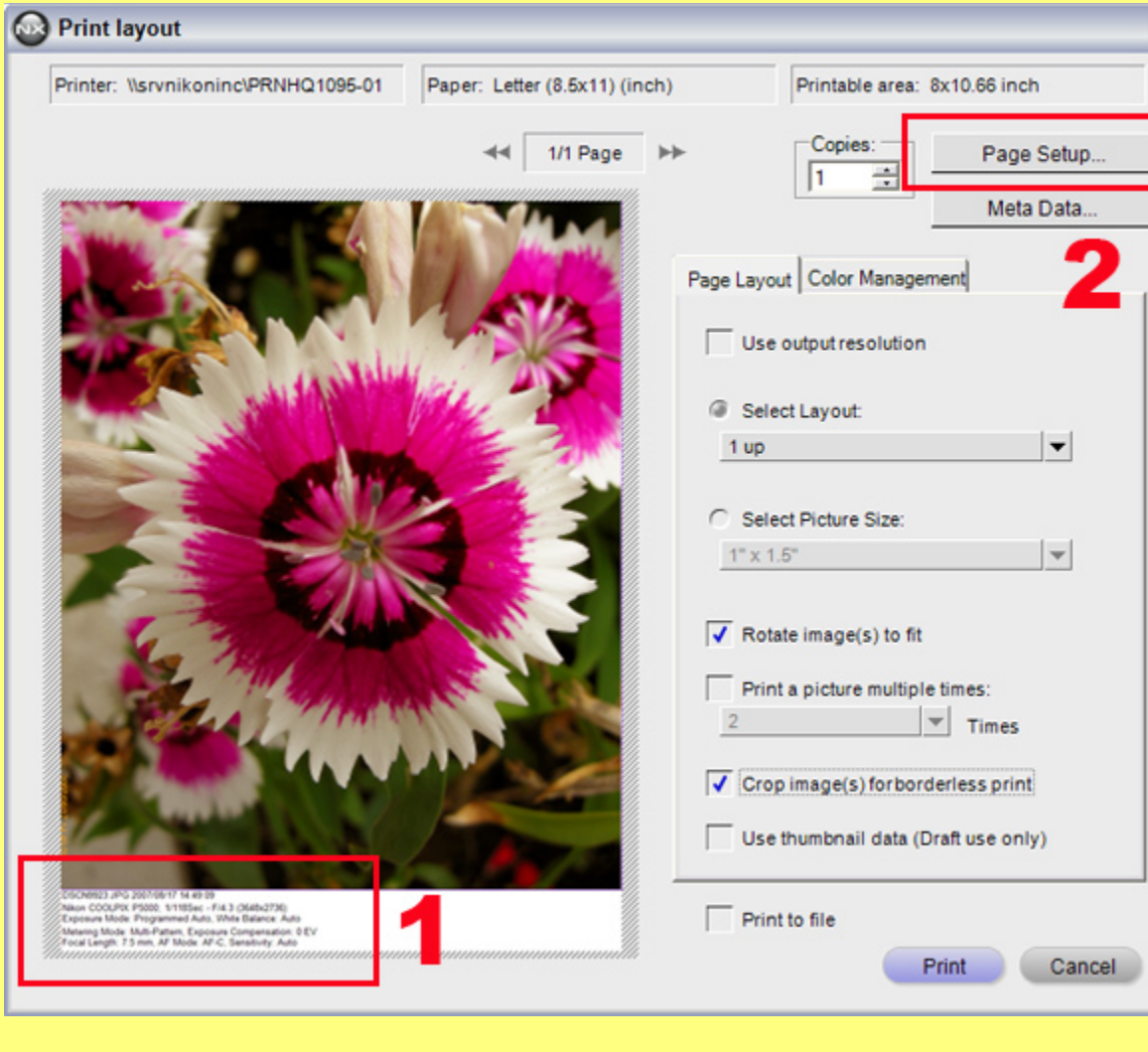
3) Click "OK" to return to the "Print layout" dialog.

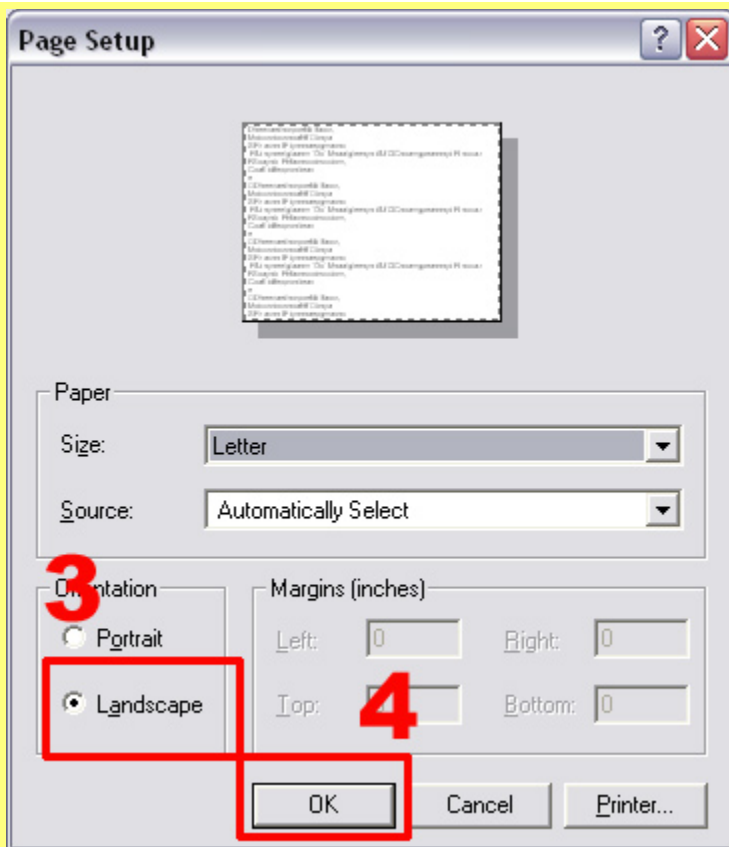


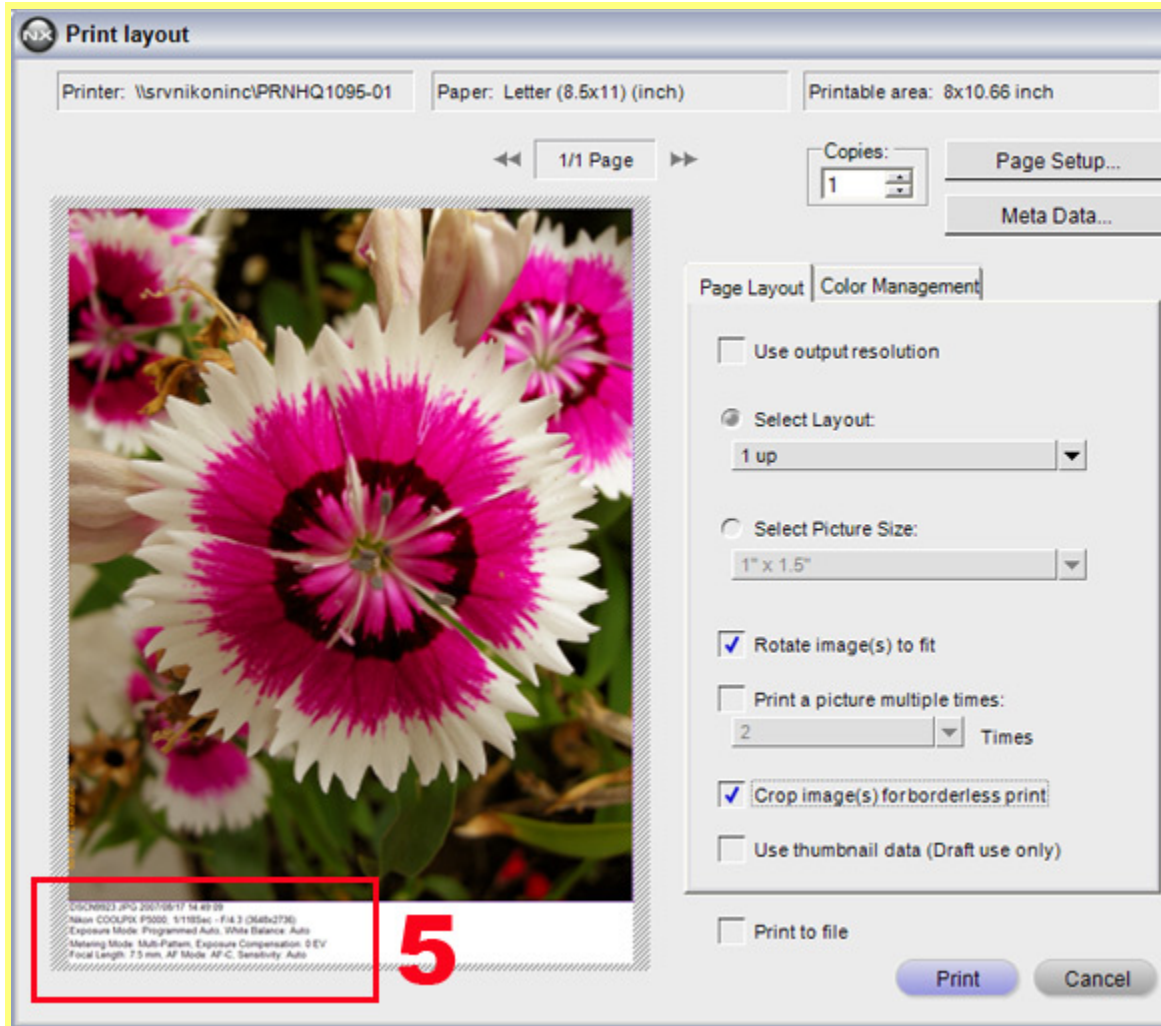


### Printing photo information (meta data).

When photo information is printed with images, margins around the images are automatically preserved and photo information is printed in the margin. When images captured in landscape orientation are rotated for printing, photo information will be printed at the side of the image (1). If you dislike this format, open the "Page Setup" dialog (2) and choose "Landscape" orientation to have photo information printed below the image. (4) Click "OK" to exit "Page Setup". (5) Meta data is displayed.

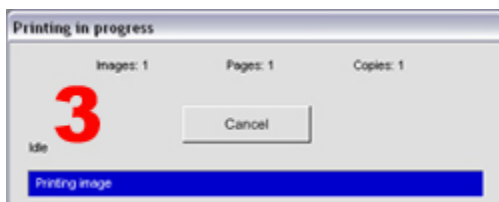
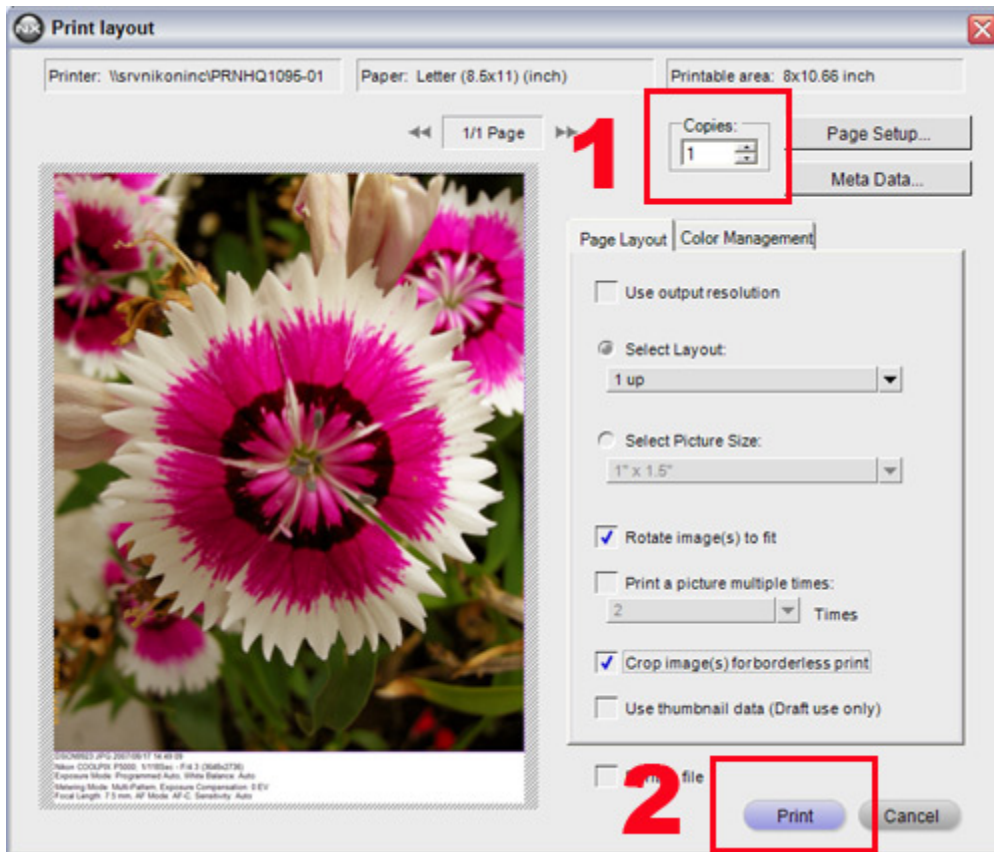






#### Step 5 - Begin printing.

- 1) Confirm the number of copies to be printed.
- 2) Click "Print" to initiate printing.
- 3) The "Printing in progress" dialog is displayed during printing.



### Digital camera pixel count and print size.

The level of detail in images is determined by the pixel count of image data and the size at which images are printed. While cameras like the Nikon D40, D70, and D70s, with pixel counts in the 6-million range provide adequate image data for printing at A4 size, a much higher level of detail is visible when images captured with cameras like the D80 and D200, with pixel counts in the 10-million range, are printed at the same size.

### Achieving optimum prints.

To print images at the best possible quality, it is important that the paper used is the same paper specified in the printer's properties or preferences dialog. Before printing, specify the correct paper type is already selected.

This concludes Article 14 of the Nikon Capture NX "How to..." series. [Click here](#) for quick links to each article.