

Nikon Capture NX "How To..." Series

Article 20: How do I correct for red-eye?

Purpose:

Reduction or removal of red eye images is easily performed using the "Red Eye Control Point" tool.

Before: The red-eye phenomenon occurs with flash photography in dimly lit surroundings.



After: The red-eye is almost completely eliminated.

Process:

Step 1 - Open an image exhibiting the red eye phenomenon.

Step 2 - Enlarge display, centering on the eye.

Step 3 - Select the "Red-Eye Control Point" enhancement.

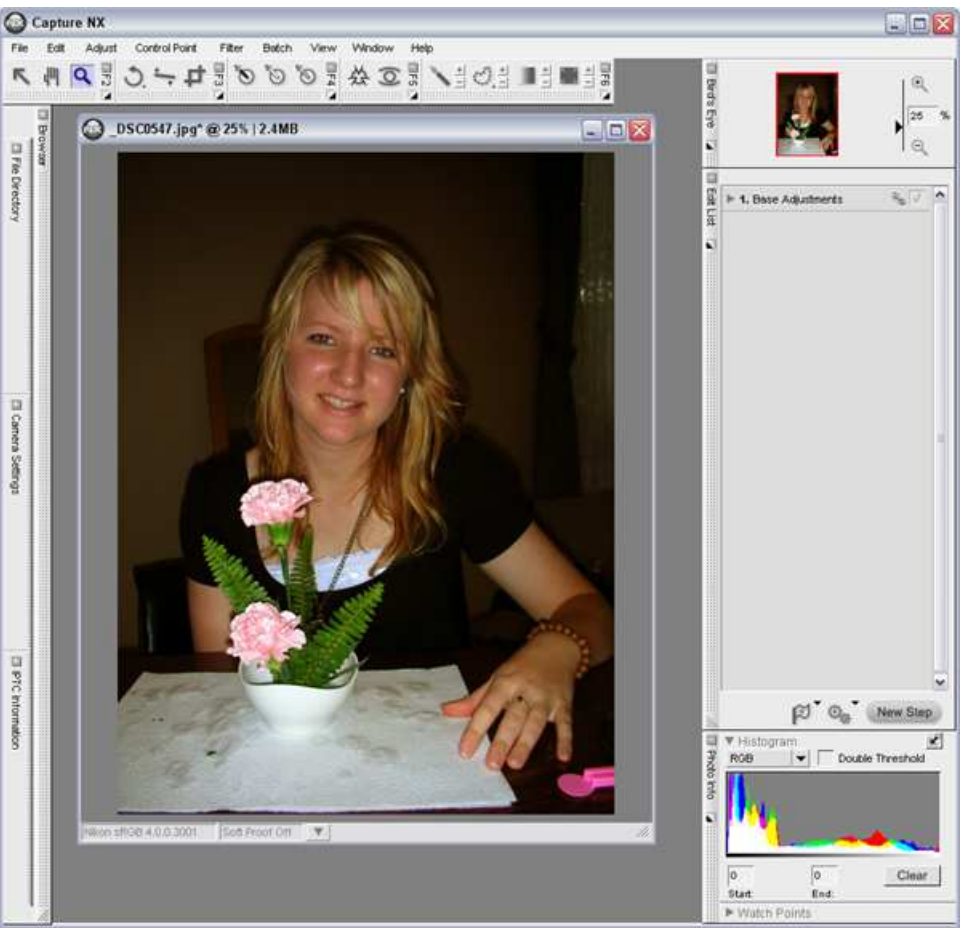
Step 4 - Apply "Red-Eye Control Point" enhancement.

Step 5 - Drag the image to display the other eye.

Step 6 - Apply "Red-Eye Control Point" enhancement.

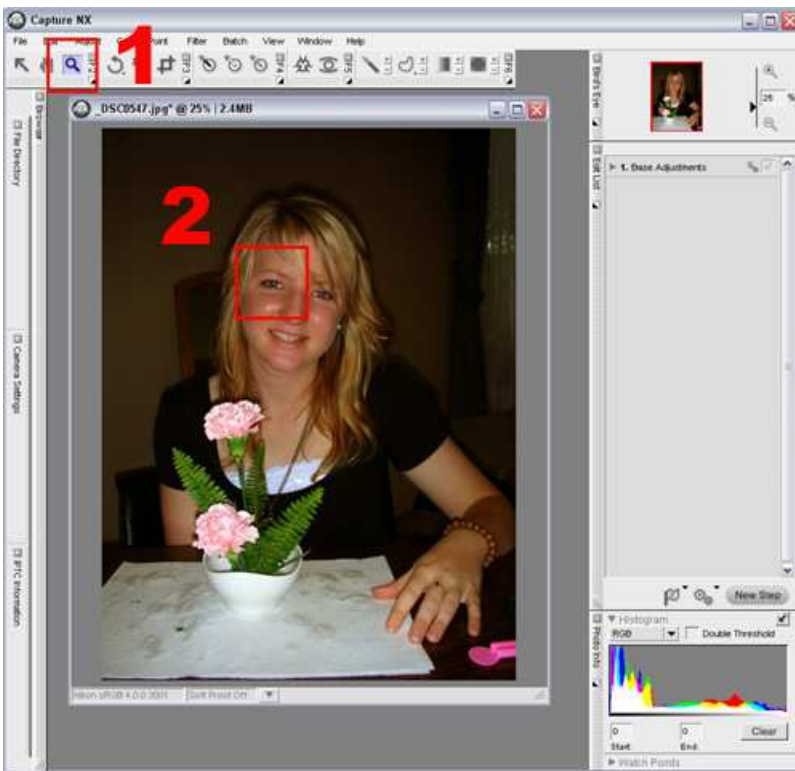
Step 1 - Open an image exhibiting the red-eye phenomenon.

Open an image exhibiting red-eye.

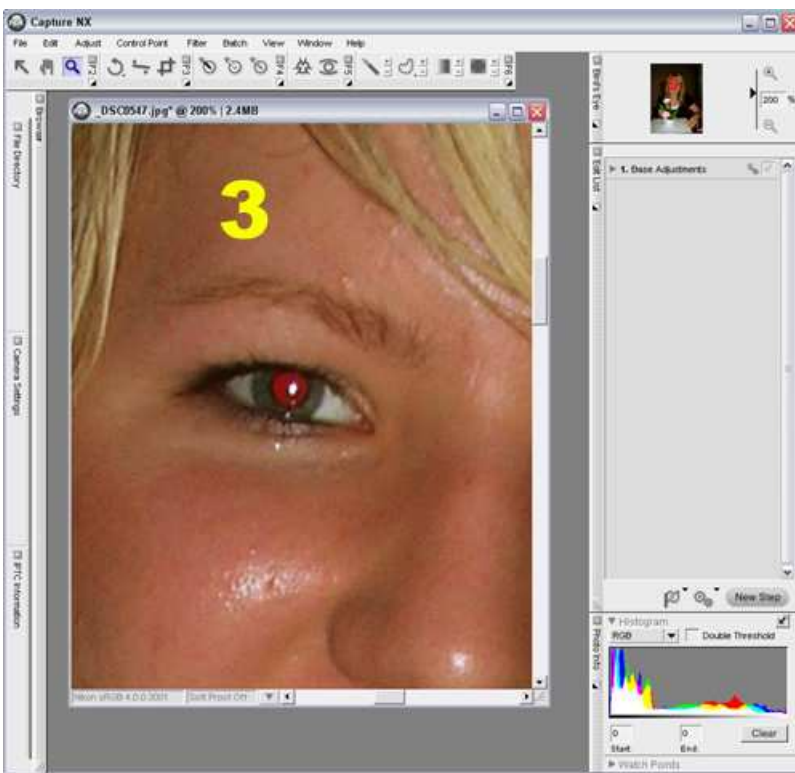


Step 2 - Enlarge display, centering on one eye.

- 1) Select the "Zoom" tool.
- 2) Click on one eye, or drag the "Zoom" tool across one eye to enlarge display to 100 - 200%.



3) The eye portion of the image is enlarged.



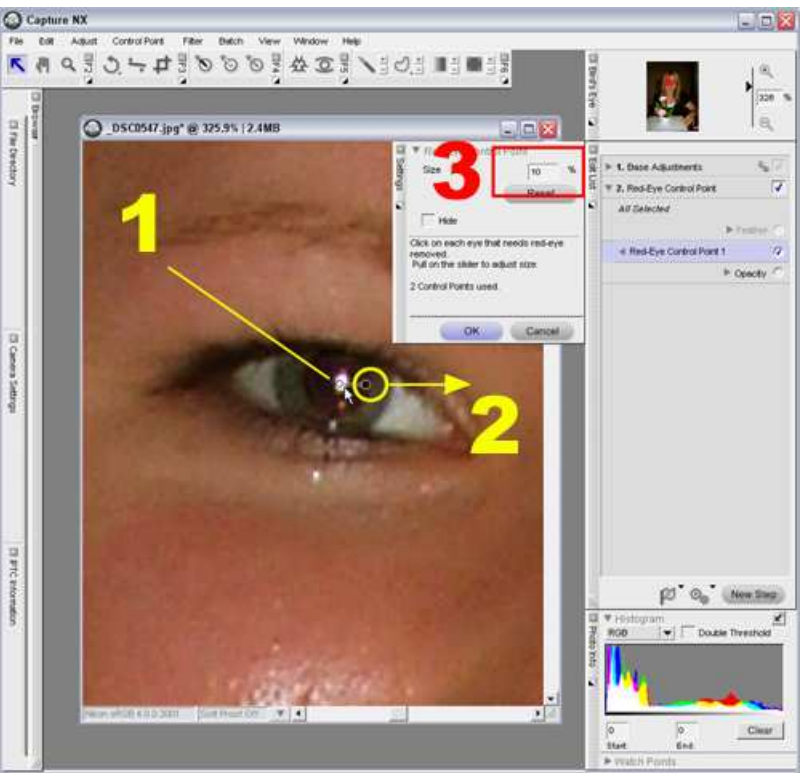
Step 3 - Select the "Red-Eye Control Point".

Select the "Red-Eye Control Point".

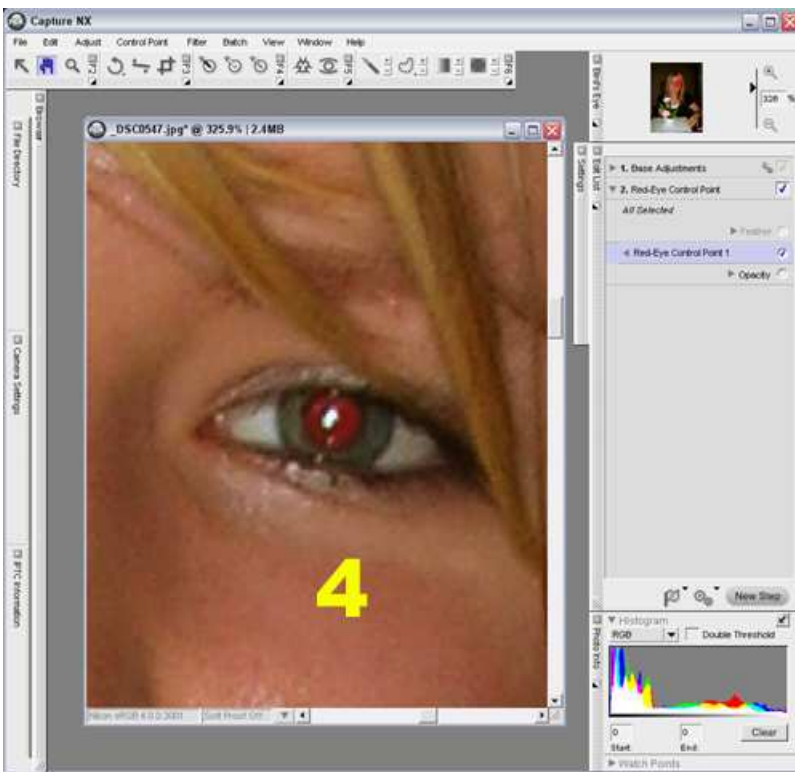
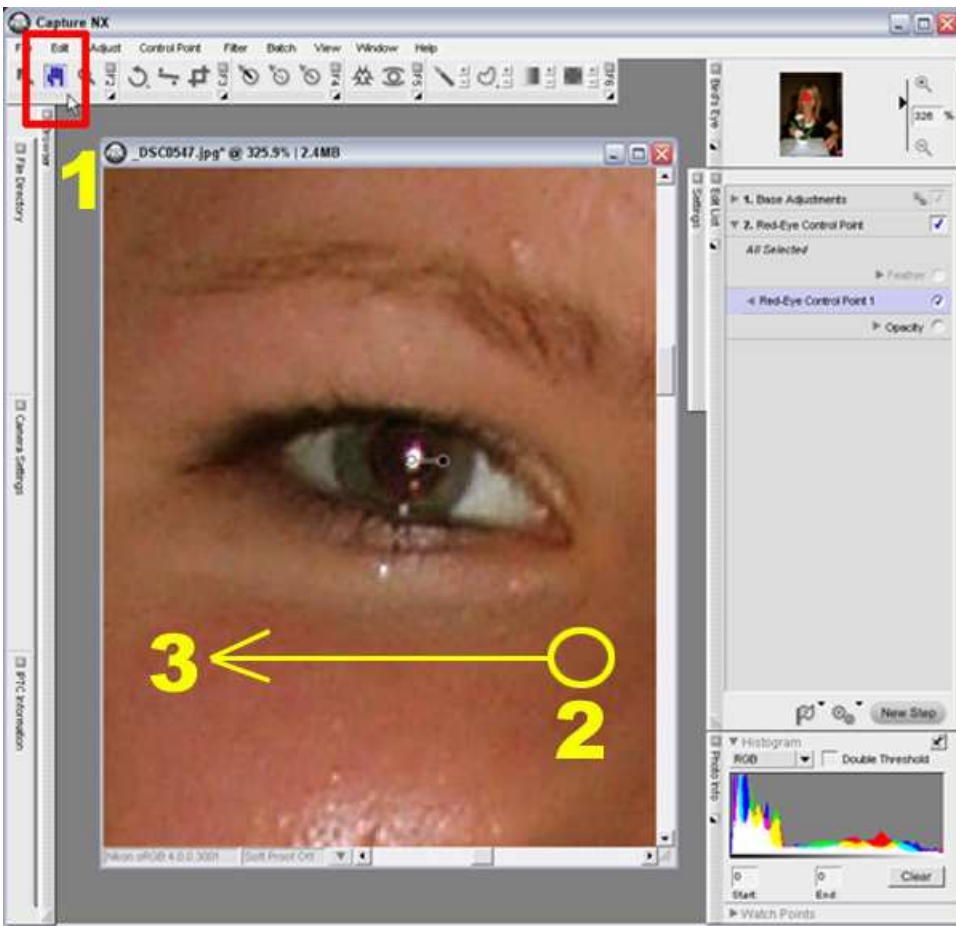


Step 4 - Apply "Red-Eye Control Point" enhancement.

- 1) Click in the center of the pupil to add a "Red-Eye Control Point". The Red-Eye phenomenon is reduced or eliminated.
- 2) Drag the size slider left or right to adjust the size of the "Red-Eye Control Point's" effective area until maximum results are achieved.
- 3) The "Red-Eye Control Point" dialog is displayed.

**Step 5 - Drag the image to display the other eye.**

- 1) Select the "Hand Tool".
- 2) Click the hand on the right side of the image, hold and
- 3) drag the image to the left.
- 4) Display the other eye.



Step 6 - Apply "Red-Eye Control Point" enhancement.

- 1) Select the "Red-Eye Control Point" again to reduce the red-eye phenomenon for the other eye.
- 2) Place the "Red-Eye Control Point" as in STEP 4 and adjust the size of the effective area to reduce or eliminate the red-eye phenomenon.

3) Click "OK" in the "Red-Eye Control Point" dialog. A "Red-Eye Control Point" step is added to the "Edit List" and enhancement is complete. Click the arrow to close the "Red-Eye Correction" tool and remove the "Control Points" from view.

