

# Nikon Capture NX "How To..." Series

---

## Article 22 - How to convert multiple RAW NEF images to JPEG

---

**Purpose:** Using the "Batch" process, you can convert all RAW NEF images in a *single folder* to JPEG images. Please also see " [Article 1](#): How to batch convert files", and " [Article 6](#): How to batch process using the "Save As..." option" for more Capture NX file batching possibilities.

---

### Process:

**Step 1** - Create a folder for the original RAW NEF images and one for the converted JPEG images.

**Step 2** - Confirm that the RAW NEF image folder contains the RAW NEF images to be converted.

**Step 3** - Apply the appropriate settings in the Batch process panel and start the Batch process.

**Step 4** - Start the Batch process.

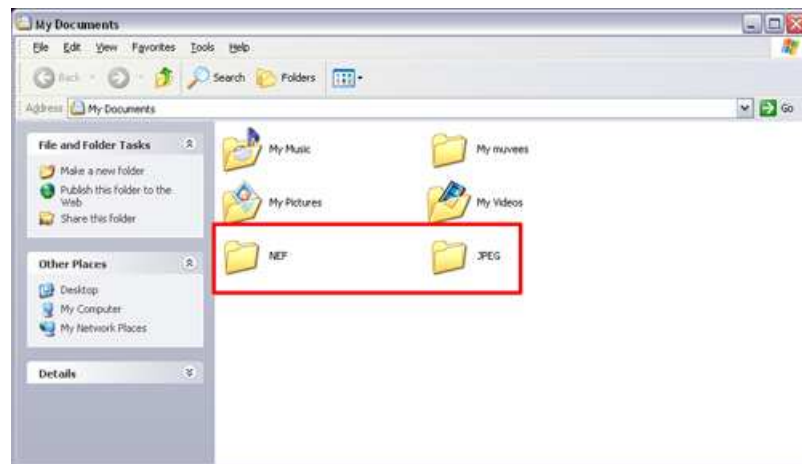
**Step 5** - When the Batch Process is complete close the "Processing Queue - Process Running" dialog.

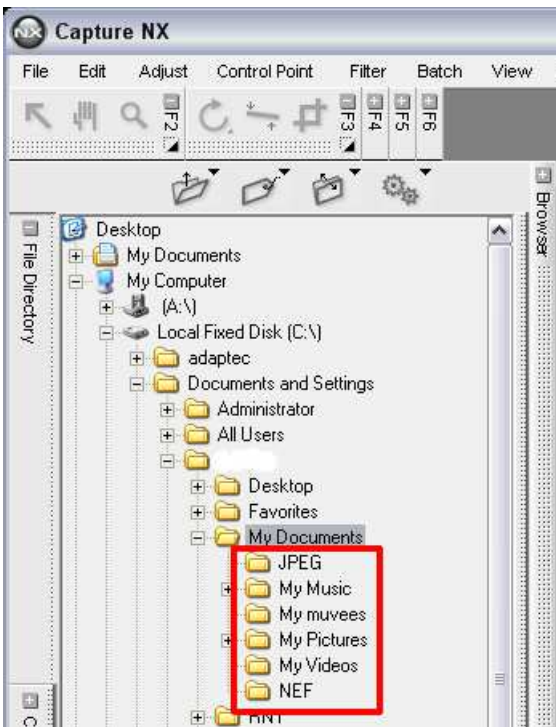
**Step 6** - Check the images converted to JPEG format.

---

**Step 1** - Create a folder for the original RAW NEF images and one for the JPEG images.

In preparation for a Batch Process, first create a folder to store the original RAW NEF images and a second folder for the converted JPEG images. Here we have created folders named "NEF" and "JPEG".



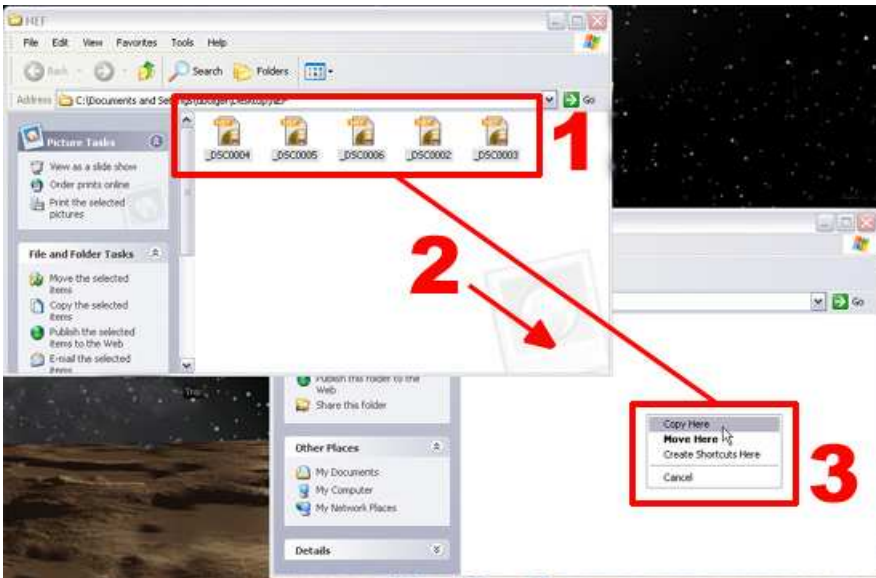


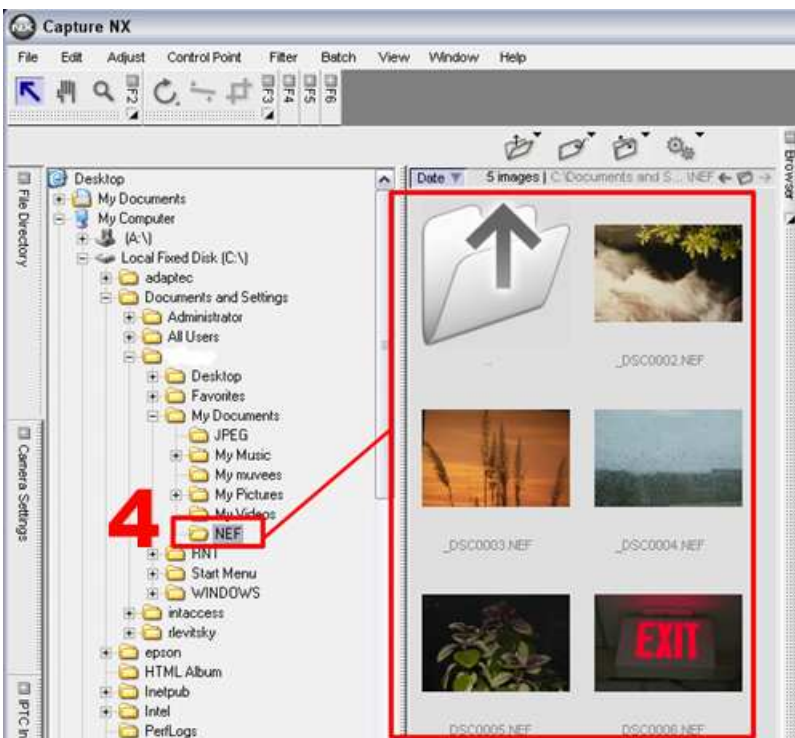
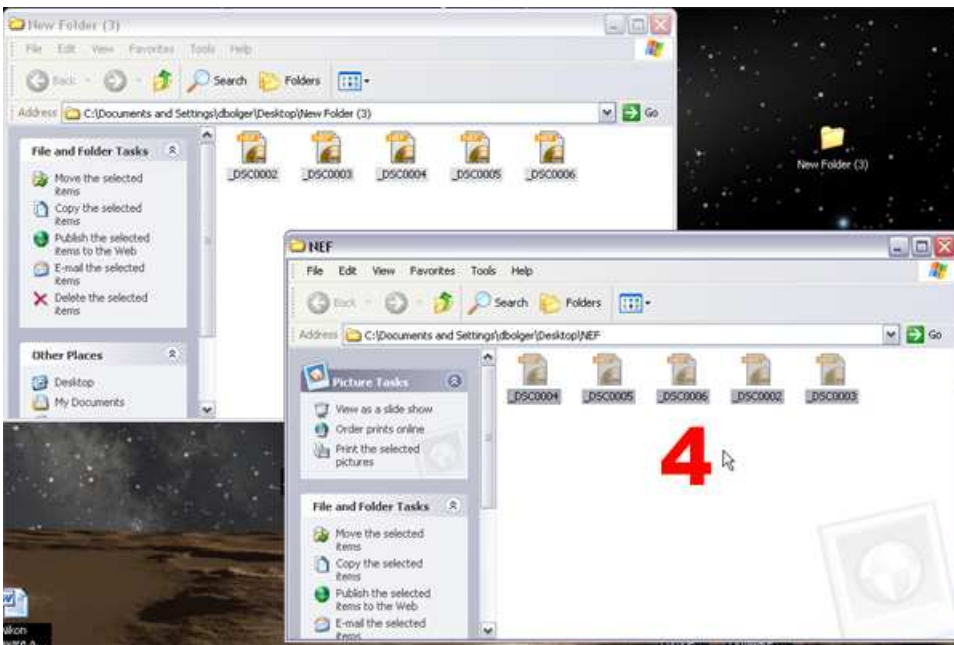
**Step 2** - Confirm that the NEF image folder contains the RAW NEF images to be converted.

- 1) With the source folder and destination folders open, highlight the RAW NEF images to be Copied, then RIGHT-CLICK and hold, and drag to the white space in the NEF folder.
- 2) Let go of the right mouse button, and
- 3) select "Move" or "Copy" to transfer the RAW NEF images to be converted to JPEG format to the NEF folder created in Step 1.

**NOTE:** To ensure that original images are not accidentally deleted or lost, it is recommended that the images are **Copied** rather than **Moved**.

- 4) The NEF folder now contains the images to be converted.



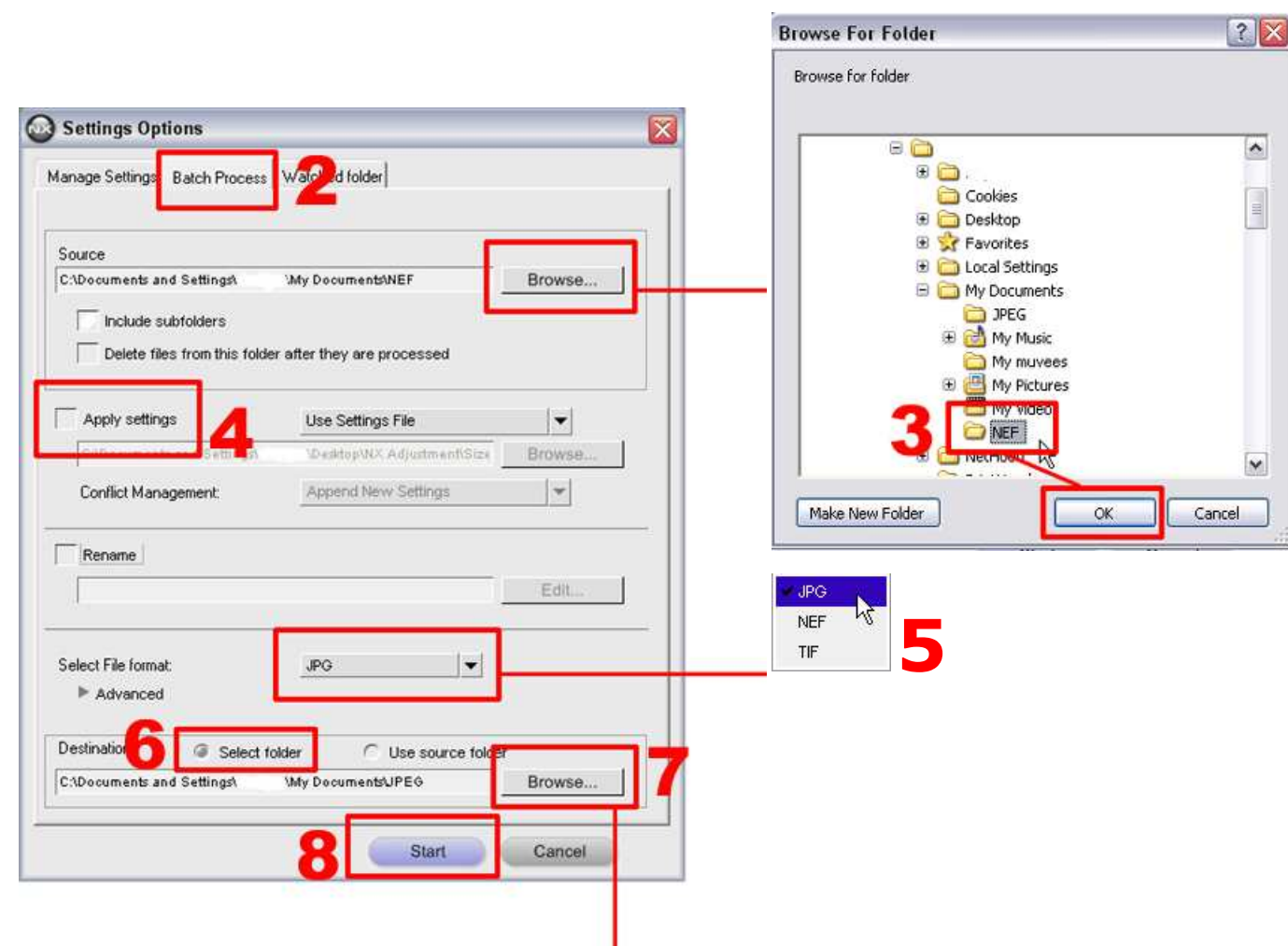


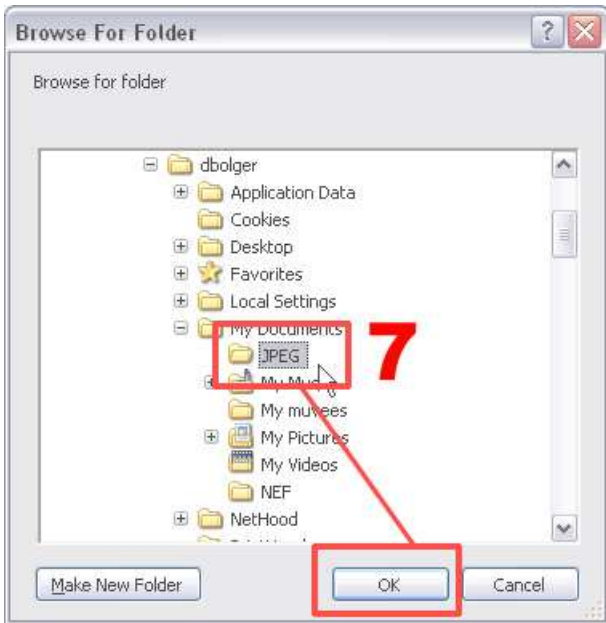
**Step 3 -** Apply the appropriate settings in the Batch process panel and start the "Batch Process".

1) Select "Run Batch Process..." from the "Batch" menu.



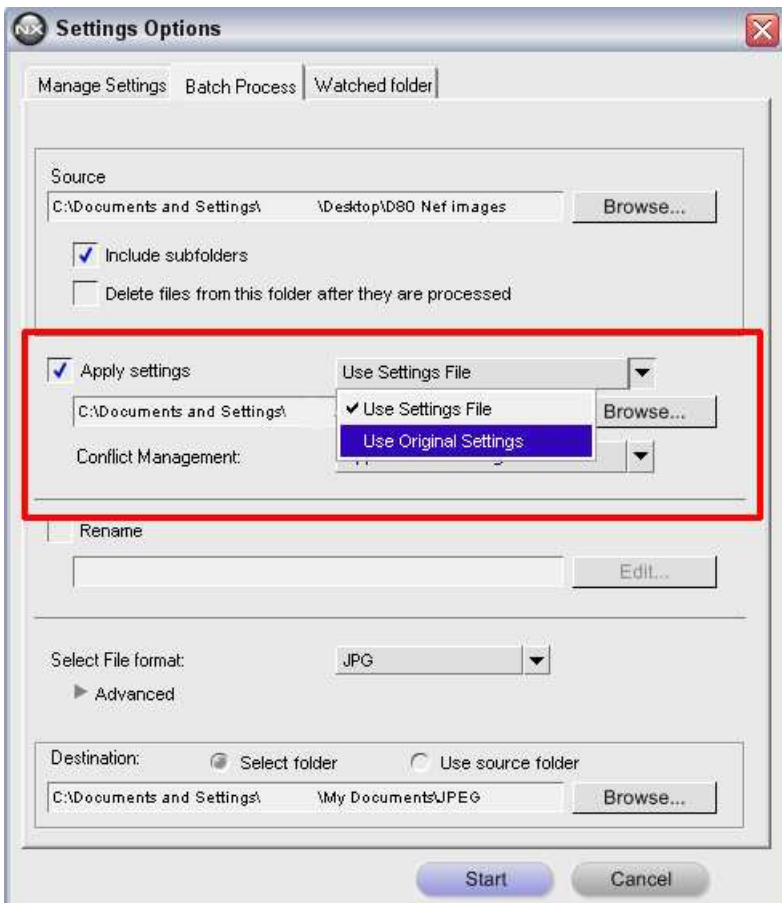
- 2) The "Batch Process" panel in the "Settings Options" dialog will be displayed.
- 3) Click "Browse..." in the "Source" area, navigate to the NEF image folder, and click "OK".
- 4) Be sure that the "Apply Settings" option is not enabled. (not checked).
- 5) Select "JPG" from the "Select File" format pulldown menu.
- 6) Choose "Select folder" in the "Destination" area.
- 7) With the "Select folder" radio button in the "Destination" area enabled, click "Browse..." and navigate to the folder created for converted JPEG images (JPEG).
- 8) Click "Start" to initiate JPEG conversion.





### The Apply Settings option.

If the "Apply Settings" option is enabled (checked), a settings file previously saved using the "Save Settings..." option in the "Batch" menu can be applied, or settings already applied to the RAW NEF images can be disabled so that the RAW NEF images are reverted to their original form before conversion to JPEG format.



### Two Batch Process modes:

There are two Batch Process modes available when the "Apply Settings" option is enabled: "Use Settings File" and "Use Original Settings". The two modes operate as follows:

**(1) Use Settings File**

When this option is selected, click "Browse..." to choose the settings file to be applied with JPEG conversion. The settings file may be created by simply saving your editing changes

**(2) Use Original Settings:**

When this option is selected, enhancements applied to the RAW NEF images with Capture NX are disabled and the images are reverted to their original state.

---

**Step 4 - Start the Batch Process**

The "Processing Queue - Process Running" dialog, shown below, is displayed while images are converted.

- 1) The first screenshot shows the "Processing Queue - Process Running" dialog in its minimized form,
- 2) while the second shows the same dialog when details are displayed by clicking the "Details" show / hide triangle.

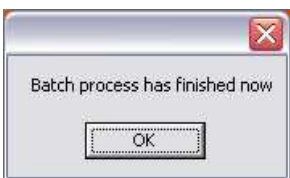






**Step 5** - When the "Batch Process" is complete, close the "Processing Queue - Process Running" dialog.

1) When the "Batch Process" is complete, "Batch process is complete" will be displayed. Click "OK" to close the window.



**Step 6** - Check the images converted to JPEG format.

1) Select the folder, " JPEG", created for images converted to JPEG.

2) Verify that the images displayed in the Browser are those originally selected for conversion to JPEG format.

