

## Nikon Capture NX "How To..." Series

---

### Article 4 - How to brighten only a portion of the image using the Selection Brush.

---

**Purpose:** To brighten portions of an image that are dark due to backlighting by using the Selection Brush to create a selection to edit.

---

**Before:** The orange tulip in the foreground is dark, as if it were backlit .



**After:** The orange tulip in the foreground is sufficiently brightened.

---

#### Process:

**Step 1** - Open an image.

**Step 2** - Select the "Brush Selection Tool", and choose a contrasting color to highlight your selected area..

**Step 3** - Drag the "Plus Brush" over the portion of the image to be brightened.

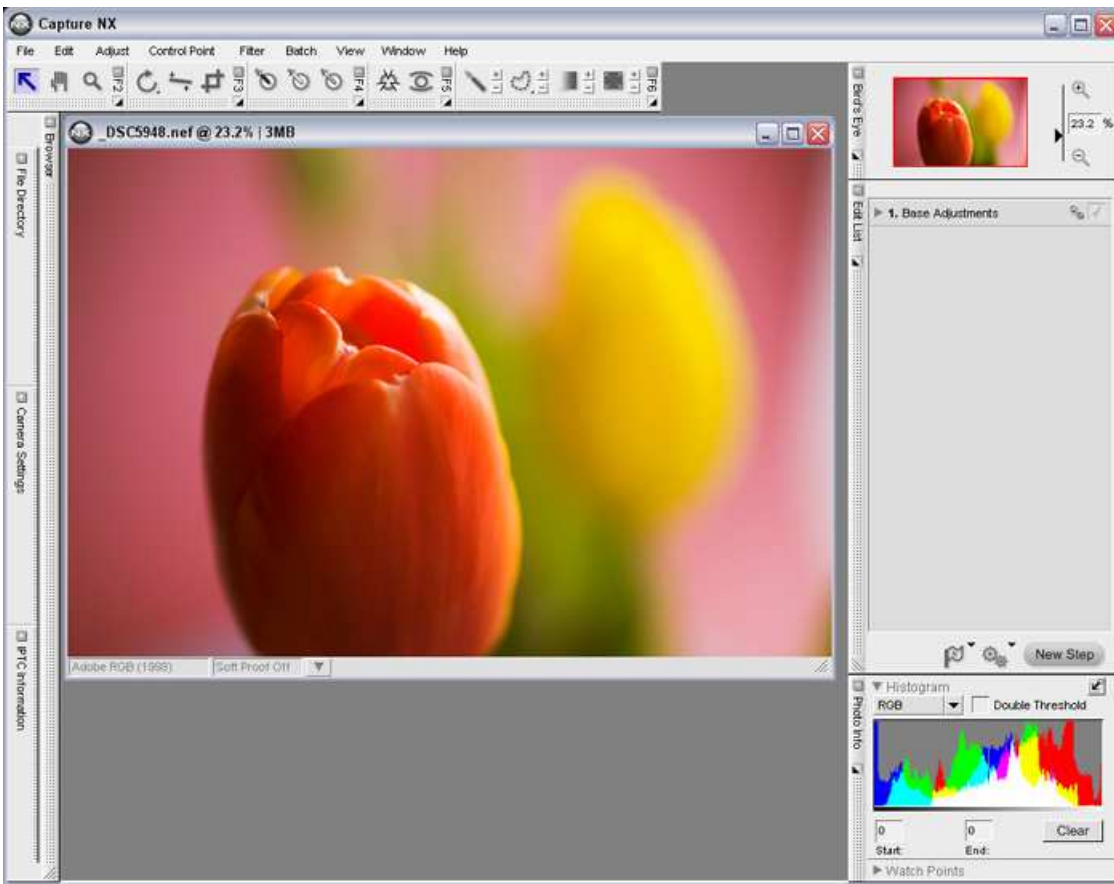
**Step 4** - Change enhancement from "Colorize" to "D-Lighting".

**Step 5** - Adjust D-Lighting brightness and enhancement is complete.

---

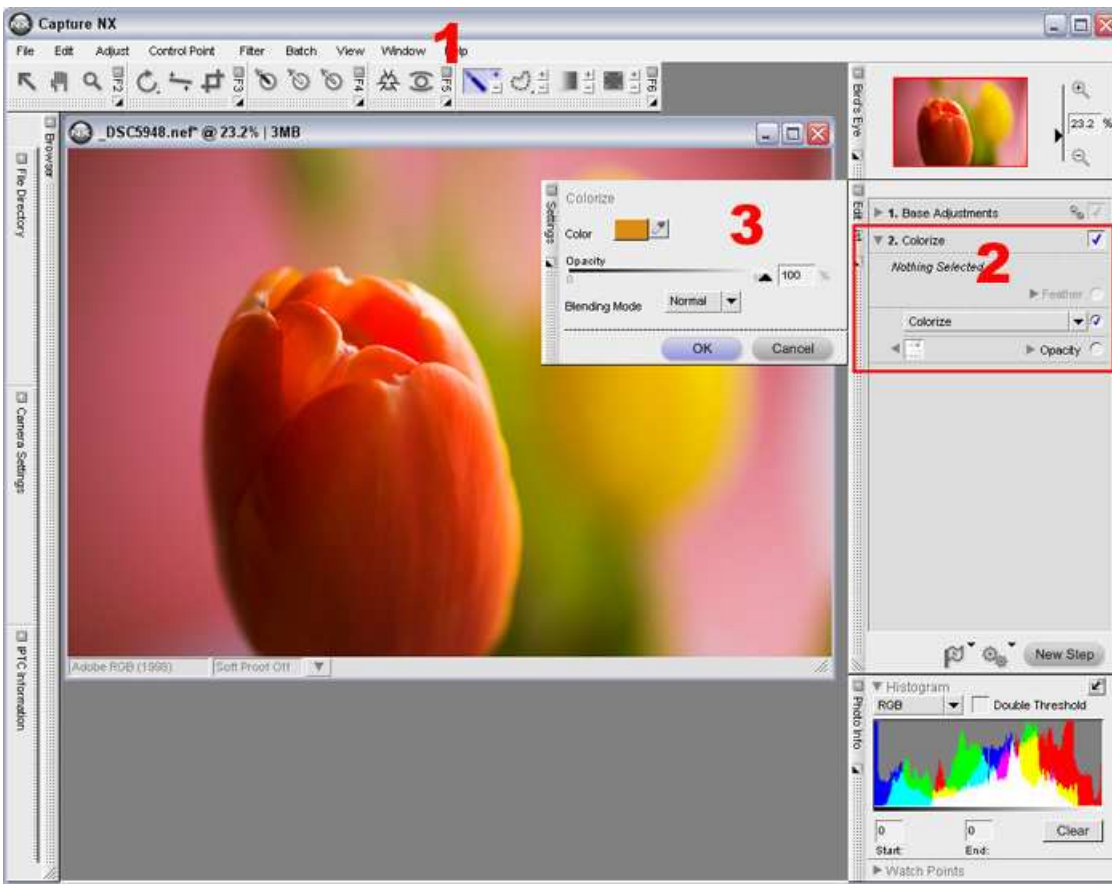
**Step 1** - Open an image.

This is the image before enhancement. The orange tulip in the foreground is dark, so we will brighten only this tulip.



**Step 2 - Select the "Plus Brush Selection Tool"**

- (1) Select the "Plus Brush Selection" Tool.
- (2) A "Colorize" step will be added to the "Edit List".
- (3) At the same time, the "Colorize" dialog will be displayed.



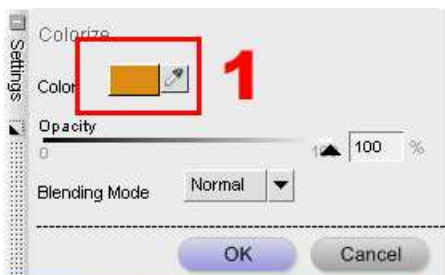
### What does Colorize mean?

When Selection Tools such as the "Selection Brush" or the "Lasso Tool" is selected, a "Colorize" operation is initiated for coloring images. This coloring of images makes it easy to see which portions have been selected for enhancement. "Colorize" can also be used to easily add color, or "paint" images.

### Distinguishing the Colorize color:

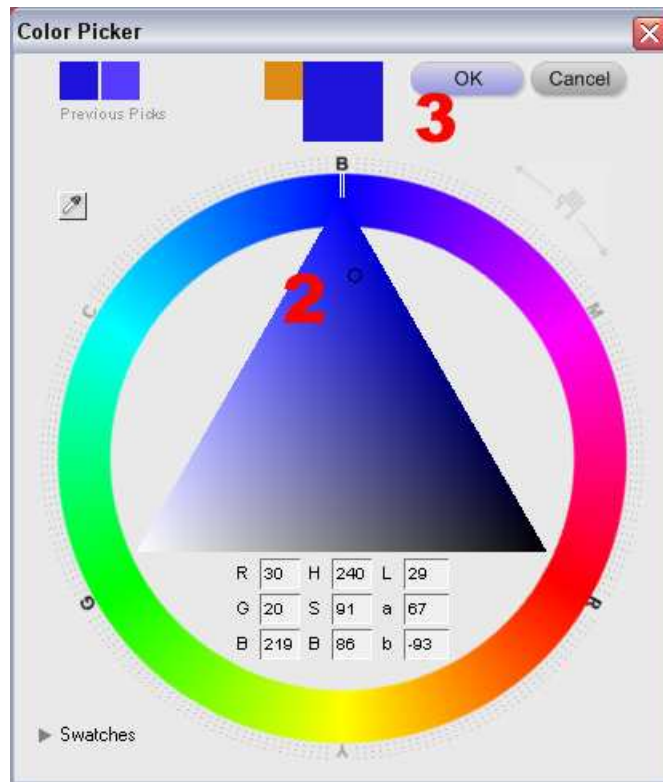
The default "Colorize" color is orange. If, as with this example, the Colorize color is similar to the color of the selected area in the image, it may be difficult to distinguish the selected area from the rest of the image. If this is the case, use the "Color Picker" to change the "Colorize" color to one that stands out from the image.

(1) Click on the color swatch in the colorize dialog to open the "Color Picker".

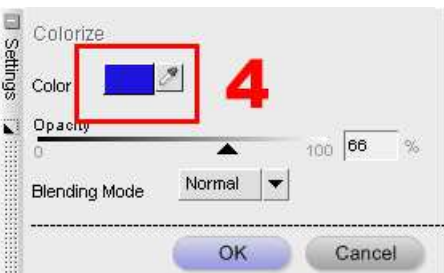


(2) When the "Color Picker" is displayed, select a color that is easily distinguishable from the rest of the image.

(3) Click "OK".



(4) The color of the swatch in the "Colorize" dialog will reflect the selected color.

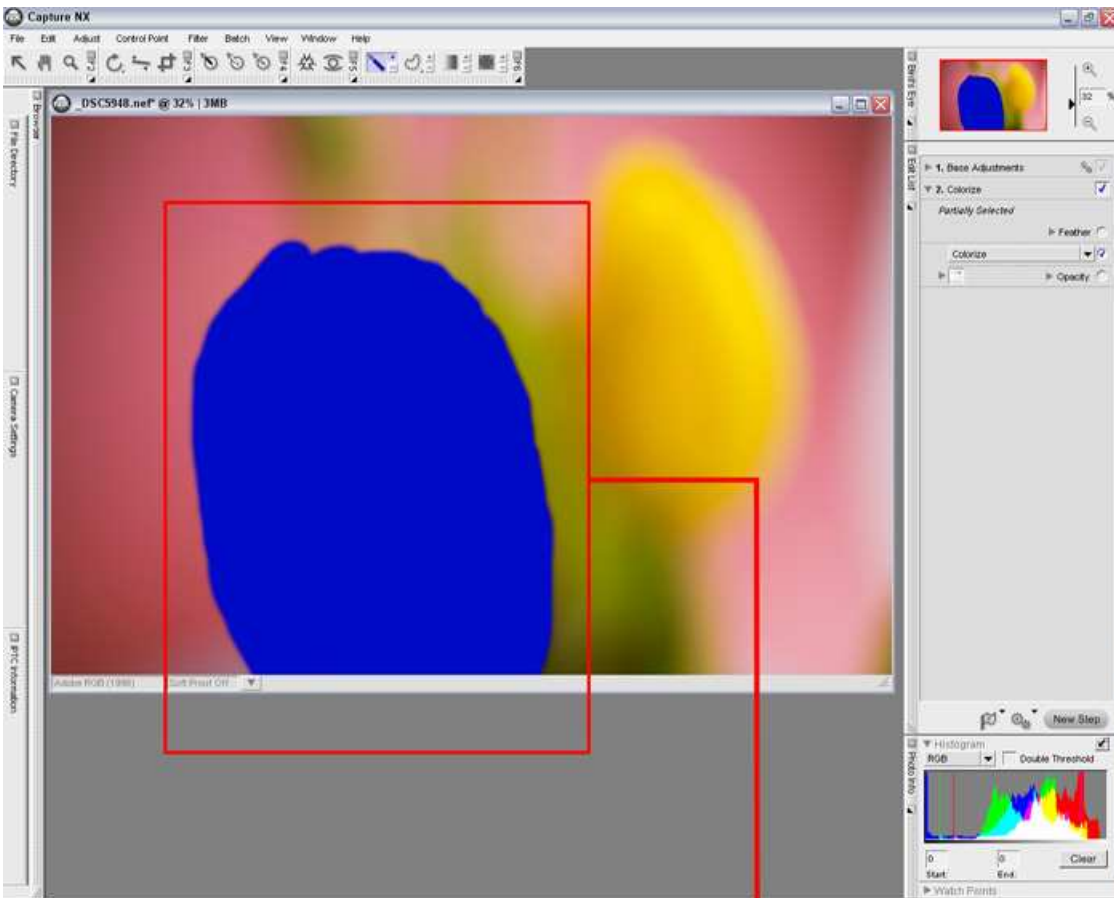


(5) The "Selection Brush" will no longer be selected, so choose the "Plus Brush" again.



**Step 3** - Drag the Plus Brush over the portion of the image to be brightened

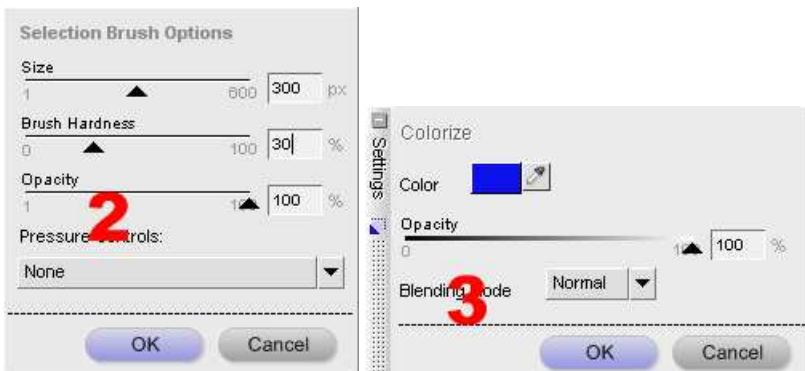
(1) Drag the "Plus Brush" over the portion of the image to be brightened to "paint" it.



(1) Drag the "Plus Brush" over the portion of the image to be brightened to "paint" it. (We have used Blue in this example to colorize the selected portion).

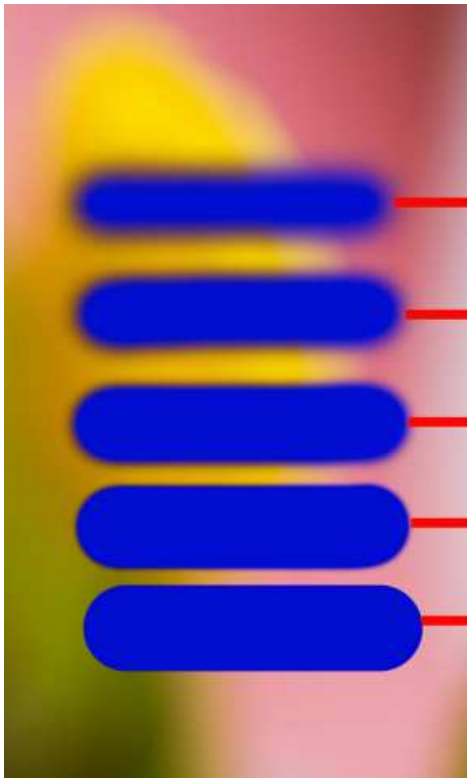
(2) If necessary, double-click the "Selection Brush" to open the "Selection Brush Options" dialog and adjust the "Size", "Brush Hardness", and "Opacity" (in this example, we have used the settings indicated in the screenshots below).

(3) When you have dragged the "Plus Brush" over the necessary portion, click "OK".



### Brush hardness in the Selection Brush Options Dialog:

The "Selection Brush Options" dialog contains "Size", "Hardness", and "Opacity" settings. "Size" indicates the size of the brush, "Opacity" indicates the degree of enhancement opacity, and "Brush Hardness" indicates the degree of softening applied to the brush edges. Adjusting the degree of edge softening is effective for producing more natural results with enhancements, including "Brightness", applied using the "Selection Brush".



Brush Hardness = 0  
 Brush Hardness = 25  
 Brush Hardness = 50  
 Brush hardness = 75  
 Brush hardness = 100

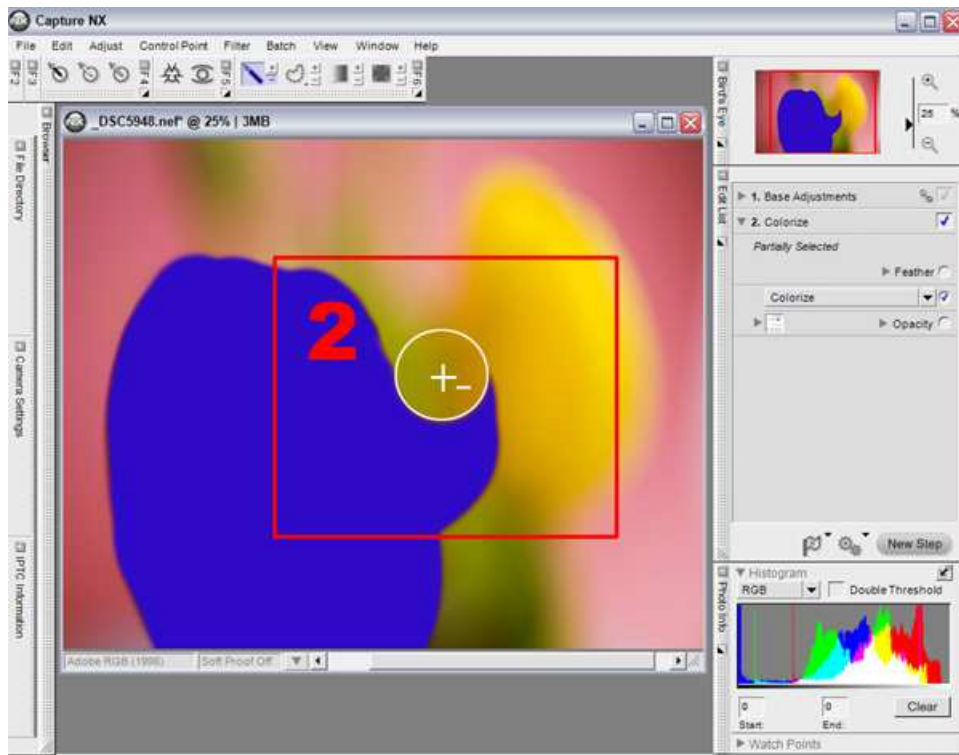
This illustration shows the degree of edge softening when the "Brush Hardness" slider is adjusted. Lower values apply greater edge softening while higher values apply less softening and create sharp boundaries.

**Eliminating a portion of the Selected Area:** If you accidentally drag the "Plus Brush" (+) over a portion of the image for which enhancement was not intended, you can drag the "Minus Brush" (-) over that portion to eliminate the selected area.



(1) The extended portion of blue on the right side of the tulip is unnecessary, so we will erase that portion of selected area. Select the Minus Brush. (-)

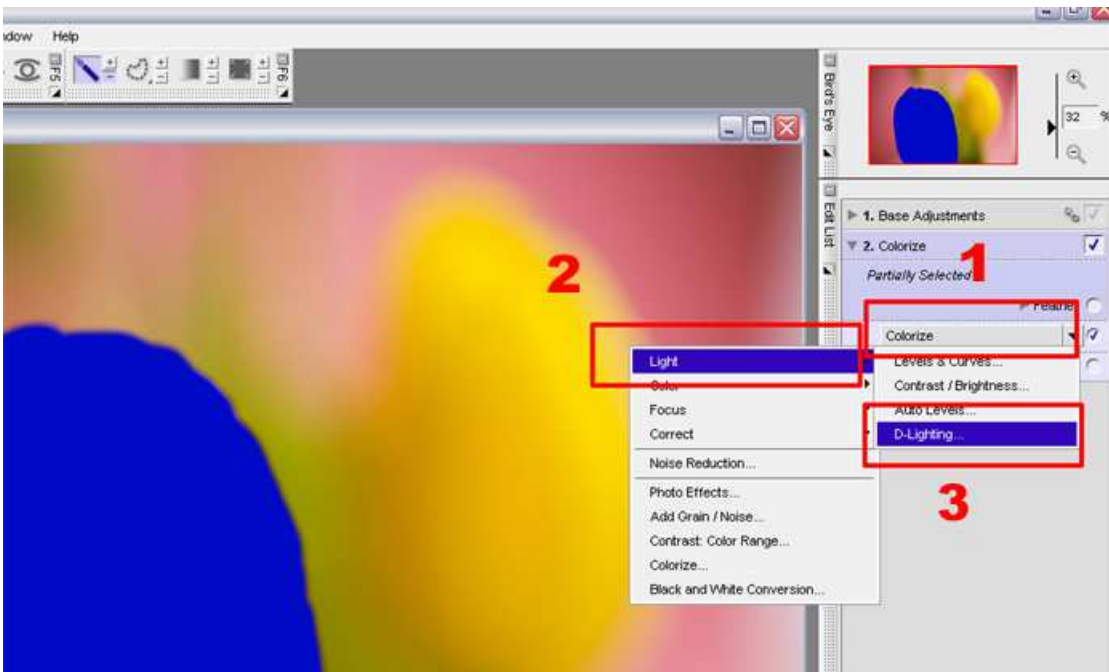


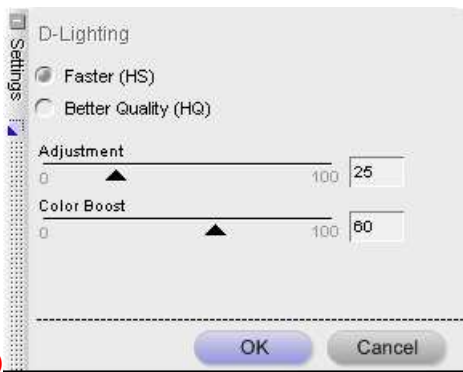


(2) Click and Drag the Minus Brush over the area you wish to erase from the selected area.

#### Step 4 - Change enhancement from Colorize to D-Lighting

- (1) Click on the "Colorize" step in the "Edit List".
- (2) Click the pulldown menu and choose "D-Lighting" from the "Light" submenu.
- (3) The D-Lighting dialog will be displayed.



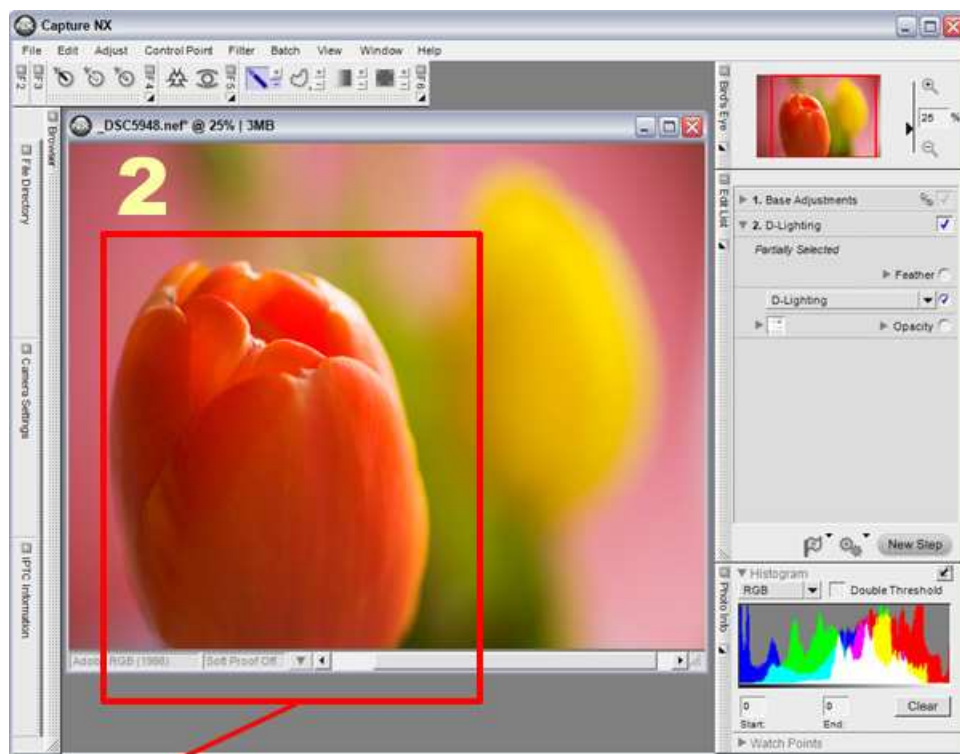
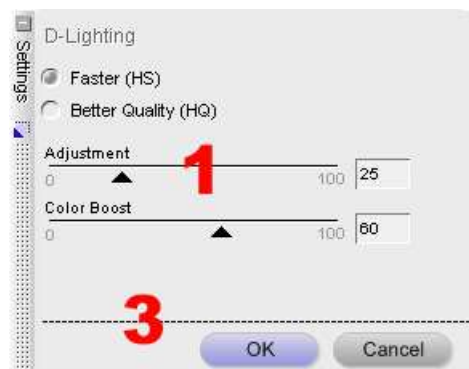


**Step 5** - Adjust D-Lighting brightness and enhancement is complete.

(1) Move the D-Lighting Adjustment slider to the right until the desired level of brightness is achieved in the selected area of the image. In this example, we have used Faster (HS) enhancement.

(2) Only the portion selected in Step 3 (the orange tulip) is brightened.

(3) Click OK to fix any changes, and enhancement is complete.



Only the orange tulip selected in Step 3 is brightened.



**D-Lighting:**

The D-Lighting feature restores tones in portions of an image that appear dark due to backlighting, insufficient flash lighting, or when details are lost in highlight portions (blown out highlights). There are two easy to use types of processing. Faster (HS) for quick processing and Better Quality (HQ) for higher quality processing that takes a little more time. When Better Quality (HQ) is selected, two more sliders appear in place of Adjustment - Shadow Adjustment and Highlight Adjustment. These offer separate control of tone range, and the Color Boost slider enhances saturation changed with tone compensation.

