

2012 Touareg



Das Auto.





Better engineering for you.

German engineering isn't just about creating a faster car. Or a tighter ride. Or even the most fuel-efficient engine. We're not merely designing the sleekest silhouette. Or the roomiest cargo space. Or the most breathtaking sunroof. And even though we place safety at the top of our list, we're not in this solely to get recognition for our success. Or to break records. Or to add extra safety features just to be safe. At Volkswagen, we're about all of these things happening together, beautifully and precisely, to create a car that's actually fun to drive. Because we're not just making any car, we're making your car. That's the power of German engineering.

The Touareg

Refinement. Redefined.

Whether you're looking for a premium driving experience, a distinctive ride, or a true SUV, with the Touareg you don't have to choose. It combines the best of German engineering with the ultimate refinements, such as an available state-of-the-art navigation system with 3D landmarks and dual climate control, all within a sophisticated and assertive SUV design. With a range of powerful engines, including the world's first supercharged hybrid, a TDI® Clean Diesel, and a V6, the Touareg is more than just an SUV. It's the only SUV that delivers a truly first-class ride, with the unique soul of a Volkswagen.





How Volkswagen does refinement.

In addition to the visible luxury of the Touareg, we thought you might like an available heated, leather-wrapped steering wheel that's also power-adjustable so you can position it exactly where it fits you best. And available 12-way heated power front seats that you and your passenger can adjust just the way you like them.

Sometimes you're too cold and your passenger is too warm. Or vice versa. Which is why we include dual-zone climate control on every Touareg. That's our way of letting you personalize your comfort in almost every way.

Every Touareg comes with rear seats that slide forward and back with adjustable backrests so your passengers can stretch out or you can stash more in the trunk. You can also choose to get rear heated seats for those extra cold winter days.



V6 FSI Executive shown in Cornsilk Beige leather

Design

Bluetooth® technology

12-way power-adjustable front seats*

Three-setting memory seating*



Hybrid shown in Cornsilk Beige leather

Understated. Over delivered.

Go ahead, walk up to your Touareg and grip the driver's side door handle. Thanks to the available keyless access with push-button start, you can leave your keys in your pocket or purse so you never have to fish for them in order to drive away. And in case you want to plug in your phone while you're on the road, you can simply use the 115V power outlet in back. It's just like a regular outlet. Only mobile.

That available sunroof is mesmerizing, isn't it? The gorgeous sky window lets in triple the amount of light of the average sunroof and extends the view into the backseats, making the ride more scenic for everyone.

*Feature available on select models.

Utility

Have style. Will travel.

When you own an SUV, you know that it's designed to hold a lot. That's probably one of the reasons you like it. So the fact that the Touareg has rear seats that fold down in a 40/20/40 split should come as no surprise to you. But perhaps the fact that they fold down and lock, and slide forward and back, is surprising. In a good way.

Did you know that the available memory seating function can be synchronized with your key? So you can set it to adjust your seat automatically when it senses your key fob.

Take a peek at the rear liftgate. Thanks to the smart little key to your Touareg, you can open and close the gate with a press of the button. So loading your latest find into the trunk just got a whole lot easier.

*Feature available on select models.



V6 TDI Sport shown in Night Blue Metallic



Technology

Touchscreen stereo system

Dynaudio® sound system*

Three-month trial to SiriusXM Satellite Radio



The best of everything we've perfected.

The Touareg comes with our available top-of-the-line navigation system complete with 3D landmarks. So the world that you see ahead of you is replicated right in the full-color display in the dash, making it even easier to navigate to your next destination. In fact, turn-by-turn directions are also displayed in color in the trip computer, right in your line of sight behind the steering wheel, so you don't have to take your eyes off the road to find your way.



Thanks to the available Dynaudio sound system with 10 premium speakers and DSP technology, road noise almost disappears as you spend mile after mile listening to music on your iPod®, SiriusXM Satellite Radio, or the internal 60GB hard drive. If the phone rings, the music will automatically pause as you answer the call using the built-in Bluetooth® with voice command and phonebook download that you can access right from the multi-function steering wheel.

*Feature is available on some models.

V6 FSI Executive shown in Black Anthracite leather

Performance

7,700-pound towing capacity*
4MOTION® all-wheel drive
Get up to 728 miles on one tank of fuel**

Engineered to defy classification.

When it comes to choosing the Touareg model that's right for you, the real question is, how do you like your power? Choose between a powerful V6, a super efficient TDI Clean Diesel, and the world's first supercharged hybrid. No matter which one you choose, all three models are built to handle almost any type of terrain.

V6 FSI® engine. The 3.6L V6 engine is one of our most powerful, especially with the eight-speed automatic transmission. With 280 horsepower and 266 lbs/ft of torque, the V6 turns the gas pedal into a gift that keeps on giving.

TDI Clean Diesel engine. Go ahead, pass the next filling station. And the next. Because the TDI engine gets up to 728 miles on just one tank of clean diesel.** It also has 225 horsepower and 406 lbs/ft of torque for exceptional power off the line and plenty of speed to keep you going.†

3.0L supercharged hybrid. Not only does it have the world's first supercharged hybrid powertrain, but it also packs a powerful punch with a combined output of 380 horsepower and 428 lbs/ft of torque and a towing capacity of 7,700 lbs.*

*Optional towing package required. **2012 3.0L TDI Clean Diesel, automatic transmission: 19 city/28 highway mpg. Range based on 28 highway mpg EPA estimate and a 26-gallon tank. EPA estimates. Your mileage will vary. †Always obey speed and traffic laws.



V6 FSI Executive shown in Flint Gray Metallic

Efficiency



TDI

Clean Diesel

T is for Turbo.

225 horsepower

406 lbs/ft of torque

Mileage

28

highway miles per gallon*

Travel

728

miles per tank*

90%

fewer sooty emissions compared to previous diesel engines

95%

less sulfur content in the ultra-low-sulfur diesel fuel

3.0L

Supercharged Hybrid

World's first supercharged hybrid.

380 horsepower

428 lbs/ft of torque

Mileage

24

highway miles per gallon**

Travel

624

miles per tank**

On the hybrid Touareg, the navigation system also comes with an on-screen display of hybrid system information that helps you to monitor your energy usage, driving range, and battery percentage. So you can help maximize your power and minimize your trips to the gas station.

When the hybrid is traveling at autobahn speeds,† the engine can switch off and the Touareg can coast without using fuel. Which is what the Volkswagen engineers call "sailing" and what the planet calls "zero emissions."

*2012 3.0L TDI Clean Diesel, automatic transmission: 19 city/28 highway mpg EPA estimates. Range based on 28 highway mpg EPA estimate and a 26-gallon tank. Your mileage will vary. **2012 3.0L supercharged hybrid, automatic transmission: 20 city/24 highway mpg EPA estimates. 624 miles per tank. Range based on 24 highway mpg EPA estimate and a 26-gallon tank. Your mileage will vary. †Always obey speed and traffic laws.

Passive Safety

Rollover Sensor System

The Touareg monitors the vehicle's turning angle and speed, which can help detect a possible rollover situation. If it determines that you're at risk of a rollover, it deploys the Side Curtain Protection® airbags* to help reduce the risk of injury.

Intelligent Crash Response System (ICRS)

After the airbags have been deployed, the Intelligent Crash Response System automatically unlocks all doors, disconnects the battery from the starter, disables the fuel pump, and turns on the hazard and interior lights. That's why we call it intelligent.**

Safety cage

Beneath its sheet metal, every Touareg has a specially reinforced safety cage complete with anti-intrusion side beams and heat-formed B-pillars. Surrounding the cage are crumple zones that provide space and material to help absorb the impact while the cage helps insulate you.

Crash-optimized front end

Integrated right into the front structure of your Touareg are impact-absorbing elements that allow for compression during a collision. That means the energy from the impact is absorbed by the car, which helps minimize the amount of energy that reaches you.

Passive safety. The Touareg is designed with a comprehensive system of passive safety features that help protect you during an accident, such as safety belts, airbags,* steel-reinforced seating, a safety cage, and crumple zones. They work together when they're needed most to help keep you safe in the event of a collision.

*Airbags are supplemental restraints only and will not deploy under all crash circumstances. Always use safety belts and seat children only in the rear, using restraint systems appropriate for their size and age. **The Intelligent Crash Response System (ICRS) will only activate in a collision where the airbags deploy or safety belt pretensioners activate. Not all collisions cause airbags to deploy or safety belt pretensioners to activate.



This is a dramatization and does not depict what will happen in a collision. All bags will not inflate in real world collisions and if multiple bags do deploy they will be in various stages of inflating/deflating and will never all be inflated at the same time.

V6 TDI Executive shown in Black

Active Safety

Anti-Slip Regulation (ASR)

ASR helps prevent the wheels on your Touareg from spinning when you accelerate by denying engine power in situations when it senses wheel slippage.

Anti-lock Braking System (ABS)

ABS actually serves two purposes when it comes to safety. It helps keep the brakes from locking up during sudden stops, and it helps you retain control over the steering in the event of emergency braking. So you can still maneuver the car as you attempt to avoid whatever is standing in your way.

Brake disc wiping

Starting fast is nice. But stopping fast is a must. So we included a brake disc wiping feature on the Touareg that helps keep the brake pads dry when it's raining, which helps optimize braking and minimize the distance required to stop completely. Which is particularly helpful in avoiding collisions.

Tire Pressure Monitoring System (TPMS)

You have enough to think about without having to remember to check your tires. So we added the TPMS to monitor inflated tire pressure and inform you of any loss in pressure. It may sound simple, but it can help you avoid an accident due to a flat tire or slow leak.



Active safety. The Touareg is designed with a comprehensive system of active safety features that can help you prevent a collision, such as adaptive headlights, turn signals, mirrors, brakes, steering, and traction control. These features help you maintain control in a variety of situations and assist in avoiding collisions.

Carefree Maintenance®

Buy one, get three.

Yes, you read that right. When you buy or lease a new Volkswagen, you get three years or 36,000 miles of no-charge scheduled Carefree Maintenance.* That's the first three years of scheduled maintenance at no extra charge. Stop by in the first 90 days, or 6,000 miles, for your courtesy vehicle check. Ask us any questions you might have while we give your Touareg a checkup. On the house. Then come by every year, or 10,000 miles, for your remaining scheduled maintenance checks. It's really that simple. If only everything in life could be this carefree.



No-charge scheduled Carefree Maintenance

3 or 36,000*
Years Miles

*The Volkswagen Carefree Maintenance Program covers the vehicle's scheduled maintenance for three years or 36,000 miles, whichever comes first. Coverage during the term of the new vehicle limited warranty at no additional charge. Some limitations apply. See dealer or vehicle maintenance program booklet for details.



V6 FSI Executive shown in Cool Silver Metallic

Technology



The Touareg comes with so many standard features, it's hard to believe there's anything more to add. It combines the best of German engineering with the ultimate in refinements, together in a true SUV.

Standard

Dual-zone climate control

You'd think that regulating temperature would be simple. But sometimes you're too cold and your passenger's too warm. Or vice versa. Which is precisely why we include dual climate control on every Touareg. Because comfort is personal. So we let you personalize your comfort in almost every way.

Remote key fob

Using just your key, you can open and close the rear liftgate with a simple press of the button. So loading groceries, or gardening supplies, or your latest find from your favorite vintage store into the back just got a whole lot easier.

Touchscreen sound system

On the touchscreen stereo, you've got an in-dash six-CD changer, AM/FM radio with crystal-clear HD Radio,[™] and an SD card reader, all playing tunes through eight speakers. Plus, all of that music, entertainment, and more can be easily navigated using the intuitive touchscreen interface right in the dash of your Touareg.

iPod integration

Stashed discreetly within the glove box of the Touareg is a Media Device Interface (MDI) with iPod cable that allows you to connect your iPod directly to the stereo system and easily navigate your playlists, albums, and songs all through the intuitive touchscreen interface. It's like having hours of music right at your fingertips. Actually, it's exactly like that.

Multi-function steering wheel

Go ahead, grip the multi-function steering wheel. Marvel at its soft leather wrapping and functional design. Doesn't that feel nice? This steering wheel comes with integrated controls for easy access to the entertainment system and to information such as average trip speed and miles to empty. It's your connection to the road, your car, and so much more.

Bi-Xenon[™] headlights with AFS

Brighter than halogen or regular filament bulbs, the Bi-Xenon light is created by an arc of electricity inside the bulb that's filled with xenon gas. It's so effective that both the low and the high beams can use the same bulb. The LED footlights set the stage for the Adaptive Front-lighting System (AFS) that actually turns the headlight up to 15 degrees around corners, helping you to effectively see into the future.

Available

Park Distance Control (PDC)

Meet the parallel parking solution. With the Park Distance Control system, ultrasonic sensors in the bumpers alert you when you get too close to another car. Or giant pole in the parking garage. Or anything that isn't an empty parking space. It's like having an assistant when you need one most.

Dynaudio premium sound system

Thanks to the 620-watt Dynaudio sound system with 10 premium speakers and DSP technology, road noise will practically disappear as you spend mile after mile listening to music through the premium touchscreen sound system.

Memory seating

When you climb in the cockpit, you can fine-tune the available 12-way power front seats exactly the way you like them and then have the all-new Touareg remember the settings for you. Automatically. And that works for up to three drivers.

Keyless access with push-button start

The days of locking your keys in the car are over, thanks to keyless access with push-button start. With your keys in your pocket or purse, your door will automatically unlock when you grip the door handle. Then, once you're inside, a simple press of the start button turns on the ignition so you can drive off on your next adventure.

Hybrid system interface

On the supercharged hybrid Touareg, the navigation system comes with an on-screen display of hybrid system information that allows you to monitor your energy usage, driving range, and battery percentage. So you can help maximize your power and minimize your trips to the gas station.

Heated rear seats

Every Touareg comes with rear seats that slide forward and back so your passengers can stretch out and get comfortable. You can also opt for heated rear seats to help warm up those chilly mornings on the way to school, on the way up to the mountains, or just during a trip to and from the grocery store.



Wondering which features are available on the Touareg? Every premium feature we offer. Make your ride even more distinctive by adding one of our top-of-the-line packages.

V6

Sport

Includes: 3.6L VR6, 280-hp engine with FSI,[®] 4MOTION[®] all-wheel drive, 8-speed automatic transmission; 18" Tacora alloy wheels with all-season tires; silver roof rails; halogen reflector lens foglights; Bi-Xenon[™] high-intensity headlights with Adaptive Front-lighting System (AFS) and LED Daytime Running Lights (DRL); Climatronic[®] dual-zone automatic climate control; leather-wrapped, multi-function steering wheel; premium color multi-function instrument cluster display; four 12V power outlets; one 115V power outlet; remote opening and closing power tailgate with closing assist and comfort opening cargo cover; HomeLink[®]; V-*Tex* leatherette seating surfaces; black high-gloss center console and trim surrounds; 8-way power, heated front seats; heated windshield washer nozzles; 40/20/40-split folding rear seat with 60/40 fore and aft sliding adjustment and 3-stage adjustable backrest; Bluetooth[®]; RCD-550 radio sound system with 6.5" color touchscreen in center console, HD Radio[™] receiver, SD memory card reader, AUX-in for portable audio players, SiriusXM Satellite Radio with 3-month trial subscription, MDI with iPod[®] cable and 8 speakers; Electronic Stability Control (ESC); Tire Pressure Monitoring System (TPMS).

Sport with Navigation

Includes Sport features, plus: RNS-850 navigation system with 8" color touchscreen in center console, 60GB hard disk, 3D landmarks, and DVD player with advanced audio converting, SirusXM Traffic with 3-month trial subscription.

Lux

Includes all Sport with Navigation features, plus: 19" Everest alloy wheels; panoramic power sunroof; heated, power-adjustable side mirrors with memory; walnut interior trim and center console with metallic trim surrounds; Vienna leather seating surfaces; 12-way power driver's seat with memory and power-adjustable lumbar; electric rear seat release located in rear cargo area.

Executive

Includes Lux features, plus: 20" Pikes Peak alloy wheels; heated, multi-function steering wheel; heated rear seats; keyless access with push-button start; Park Distance Control (PDC) with front and rear proximity sensors; Dynaudio[®] premium sound system.

The best powertrain warranty in its class.

The Touareg comes with a 10-year/100,000-mile, whichever comes first, Powertrain Limited Warranty.* Which means if something goes wrong with the engine, the transmission, or the available 4MOTION[®] all-wheel drive system, Volkswagen has you covered.

TDI Clean Diesel

Sport

Includes: 3.0L V6, 225-hp TDI[®] Clean Diesel engine; 4MOTION all-wheel drive, 8-speed automatic transmission; 18" Tacora alloy wheels with all-season tires; silver roof rails; halogen reflector lens foglights; Bi-Xenon high-intensity headlights with Adaptive Front-lighting System (AFS) and LED Daytime Running Lights (DRL); Climatronic dual-zone automatic climate control; leather-wrapped, multi-function steering wheel; premium color multi-function instrument cluster display; four 12V power outlets; one 115V power outlet; remote opening and closing power tailgate with closing assist and comfort opening cargo cover; HomeLink; V-*Tex* leatherette seating surfaces; black high-gloss center console and trim surrounds; 8-way power, heated front seats; heated windshield washer nozzles; 40/20/40-split folding rear seat with 60/40 fore and aft sliding adjustment and 3-stage adjustable backrest; Bluetooth; RCD-550 radio sound system with 6.5" color touchscreen in center console, HD Radio receiver, SD memory card reader, AUX-in for portable audio players, SiriusXM Satellite Radio with 3-month trial subscription, MDI with iPod cable and 8 speakers; Electronic Stability Control (ESC); Tire Pressure Monitoring System (TPMS).

Sport with Navigation

Includes Sport features, plus: RNS-850 navigation system with 8" color touchscreen in center console, 60GB hard disk, 3D landmarks, and DVD player with advanced audio converting, SirusXM Traffic with 3-month trial subscription.

Lux

Includes all Sport with Navigation features, plus: 19" Everest alloy wheels; panoramic power sunroof; heated, power-adjustable side mirrors with memory; walnut interior trim and center console with metallic trim surrounds; Vienna leather seating surfaces; 12-way power driver's seat with memory and power-adjustable lumbar; electric rear seat release located in rear cargo area.

Executive

Includes Lux features, plus: 20" Pikes Peak alloy wheels; heated, multi-function steering wheel; heated rear seats; keyless access with push-button start; Park Distance Control (PDC) with front and rear proximity sensors; Dynaudio premium sound system.

Supercharged Hybrid

Hybrid

Includes V6 Sport with Navigation features, plus: 3.0L, 380-hp hybrid powerplant; 19" Everest alloy wheels with all-season, low-rolling-resistance tires; panoramic power sunroof; heated, multi-function steering wheel; heated rear seats; heated, power-adjustable side mirrors with memory; power-adjustable steering column with memory; keyless access with push-button start; Park Distance Control (PDC) with front and rear proximity sensors; walnut interior trim and center console with metallic trim surrounds; Vienna leather seating surfaces; 12-way power front seats with driver and passenger seat memory and power-adjustable lumbar; metal scuff plates on door sills; aluminum appearance pedals.

Specifications

Design	Sport/TDI	Lux/TDI	Exec/TDI	Hybrid
Bi-Xenon high-intensity headlights with LED Daytime Running Lights (DRL), and Adaptive Front-lighting System (AFS)	●	●	●	●
Halogen reflector lens foglights	●	●	●	●
Power-operated, heated side mirrors with integrated turn signals	●	–	–	–
Power-operated, heated side mirrors with memory and integrated turn signals	–	●	●	●
Power sliding panoramic sunroof	–	●	●	●
Remote opening and closing power tailgate with closing assist	●	●	●	●
Trailer hitch	○	○	○	○
18" alloy wheels with anti-theft wheel locks	●	–	–	–
19" alloy wheels with anti-theft wheel locks	–	●	–	●
20" alloy wheels with anti-theft wheel locks	–	–	●	–
Rain-sensing windshield wipers with heated washer nozzles	●	●	●	●

Performance	Sport/TDI	Lux/TDI	Exec/TDI	Hybrid
3.6L, 24-valve, DOHC, narrow-angle V6 with FSI direct fuel injection; 280 hp, 266 lbs/ft of torque	○	○	○	–
3.0L, 24-valve, DOHC, V6, TDI Clean Diesel engine with common rail direct injection; 225 hp, 406 lbs/ft of torque	○	○	○	–
3.0L supercharged V6 gas engine and electric motor, combined 380 hp, 428 lbs/ft of torque	–	–	–	●
4MOTION all-wheel-drive system	●	●	●	●
Servotronic [®] steering system (power assisted)	●	●	●	●
Double wishbone front and rear independent suspension	●	●	●	●
8-speed automatic transmission	●	●	●	●

Comfort	Sport/TDI	Lux/TDI	Exec/TDI	Hybrid
Climatronic dual-zone electronic climate control with pollen filter	●	●	●	●
Speedometer, tachometer, odometer, trip odometer, fuel gauge, coolant temperature, clock, and outside temperature	●	●	●	●
Premium color multi-function trip computer with compass, trip time, trip length, average trip speed, average trip fuel consumption, current fuel consumption, miles to empty, radio station display, and personalizing function	●	●	●	●
2 radio-frequency remote transmitter key fobs with lock, unlock, trunk release, panic button, and selectable access valet key feature	●	●	●	●
Four 12V power outlets; one 115V power outlet	●	●	●	●
Self-dimming rearview mirror with on/off switch	●	●	●	●
Black high-gloss center console and trim surrounds	●	–	–	–
Walnut interior trim and center console	–	●	●	●
8-way power-adjustable front seats	●	–	–	–
12-way power-adjustable driver's seat with 4-way power lumbar support and 3-position memory function for driver's seat and side mirrors	–	●	●	–
12-way power adjustable front seats with 4-way power lumbar support and 3-position memory function for front seats, side mirrors, and power steering column	–	–	–	●
Heated front seats	●	●	●	●
Heated rear seats	–	–	●	●
3-spoke leather-wrapped multi-function steering wheel	●	●	–	–
Heated 3-spoke leather-wrapped multi-function steering wheel	–	–	●	●
Center front armrest with integrated storage box	●	●	●	●
4 cupholders, 2 front and 2 rear	●	●	●	●
Glovebox, lockable and illuminated, with adjustable cooling feature	●	●	●	●
Fully upholstered luggage compartment	●	●	●	●
V- <i>Tex</i> leatherette seating surfaces	●	–	–	–
Vienna leather seating surfaces	–	●	●	●

Comfort cont.	Sport/TDI	Lux/TDI	Exec/TDI	Hybrid
Power windows with pinch protection; front windows with automatic 1-touch feature	●	●	●	●

Technology	Sport/TDI	Lux/TDI	Exec/TDI	Hybrid
RCD-550 sound system with 6.5" color touchscreen in center console, HD Radio receiver, SD memory card reader, AUX-in for portable audio players, and 8 speakers	●	–	–	–
RNS-850 navigation system with 8" color touchscreen in center console, 3D landmarks, CD/DVD player, advanced audio converting, SD card reader, 60GB hard drive, AUX-in, HD Radio receiver, and 8 speakers	N	●	●	●
SiriusXM Satellite Radio with 3-month trial subscription	●	●	●	●
Media Device Interface (MDI) with iPod cable	●	●	●	●
Bluetooth hands-free calling system	●	●	●	●
Dynaudio premium sound system, with 10 high-end speakers (4 tweeters, 2 midrange, 4 woofers), 620-watt amplifier, and Digital Sound Processor (DSP) technology	–	–	●	–
Park Distance Control (PDC) with front and rear proximity sensors	–	–	●	●
Keyless access with push-button start	–	–	●	●

Safety	Sport/TDI	Lux/TDI	Exec/TDI	Hybrid
Tire Pressure Monitoring System (TPMS)	●	●	●	●
Anti-theft vehicle alarm system for doors, hood, trunk, radio; starter interrupt with autolock function and audible and visual activation	●	●	●	●
Immobilizer theft-deterrent system	●	●	●	●
Intelligent Crash Response System (ICRS); in the case of airbag** deployment the doors unlock, the fuel supply is shut off, and the hazard lights are activated	●	●	●	●
Driver and passenger front and side thorax airbag supplemental restraint system**	●	●	●	●
Side Curtain Protection [®] head airbags, front and rear**	●	●	●	●
3-point safety belts for all 5 seating positions; belt force limiters for all 5 seats, and belt tensioners for front seats	●	●	●	●
LATCH (Lower Anchors and Tethers for CHildren) child seat anchor points	●	●	●	●
Anti-lock Braking System (ABS), Electronic Brake-pressure Distribution (EBD), and Hydraulic Brake Assist (HBA)	●	●	●	●
Electric parking brake	●	●	●	●
Electronic Stability Control (ESC), Anti-Slip Regulation (ASR), Electronic Differential Lock (EDL), and Engine Braking Assist (EBA)	●	●	●	●

Dimensions	
Wheelbase	113.9 inches (2,893 mm)
Front track	64.9 inches (1,650 mm)
Rear track	65.7 inches (1,670 mm)
Length	188.8 inches (4,795 mm)
Width	76.4 inches (1,940 mm)
Height	68.2 inches (1,732 mm)
Ground clearance	7.9 inches (200 mm)

Quality	Sport/TDI	Lux/TDI	Exec/TDI	Hybrid
12-year/unlimited mileage Limited Warranty Against Corrosion Perforation	●	●	●	●
10-year/100,000-mile (whichever occurs first) Powertrain Limited Warranty	●	●	●	●
3-year/36,000-mile (whichever occurs first) New Vehicle Limited Warranty	●	●	●	●
3-year/36,000-mile (whichever occurs first) Roadside Assistance ¹	●	●	●	●
Volkswagen Carefree Maintenance [®] Program	●	●	●	●

● Standard, at no additional cost

○ Optional, additional cost

N Sport with Navigation

– Not Available

^[1] *See dealer or warranty booklet for details; some restrictions apply

^[2] **Airbags are supplemental restraints only and will not deploy under all crash circumstances. Always use safety belts and seat children only in the rear, using restraint systems appropriate for their size and age.
^[3] Roadside Assistance provided by Cross Country Automotive Services.

Wheels

Accessories

Exterior

Interior

Standard

drivergear.vw.com



18" Tacora



Base Carrier Bars with Roof Box Carrier Holder



Base Carrier Bars with Snowboard/Ski Holder



Base Carrier Bars with Barracuda™ Bike Holder



19" Everest



Monster Mat®



MojoMat®



Side Window Deflectors



20" Pikes Peak



Splash Guards

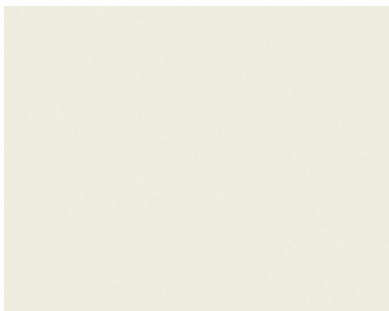


Sun Blind



Touareg Plate Frame

Paint



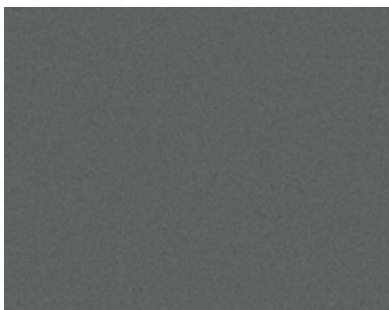
Campanella White



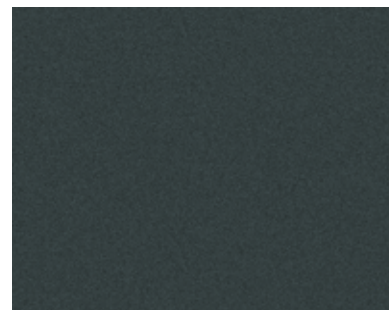
Cool Silver Metallic



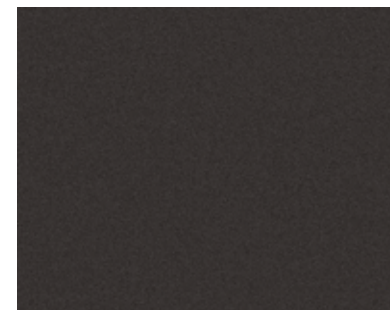
Tungsten Silver Metallic (Hybrid only)



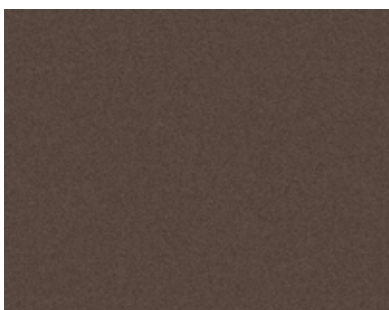
Canyon Gray Metallic



Flint Gray Metallic



Galapagos Gray Metallic



Toffee Brown Metallic



Night Blue Metallic



Black

Leather



Black Anthracite

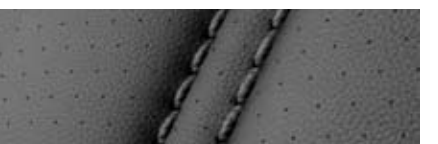


Corn silk Beige



Saddle Brown

V-Tex Leatherette



Black Anthracite



Corn silk Beige



That's Das Auto.

2012 Volkswagen Family

All-new Beetle



All-new Passat



Tiguan



Jetta



Eos



Golf



Touareg



CC



GTI



Jetta SportWagen



Routan



vw.com

©2011 Volkswagen of America, Inc. Printed in the U.S.A. Volkswagen of America, Inc., believes the specifications in this brochure to be correct at the time of printing. Specifications, standard equipment, options, fabrics and colors are subject to change without notice. Some features may be unavailable when your vehicle is built. Some vehicles are pictured with options that may be available at extra cost or may not be available on some models. Ask your dealer about availability of options and verify that the vehicle you ordered includes the equipment you ordered. Tires are supplied and warranted by their manufacturer. "Volkswagen," the Volkswagen logo, "Das Auto," "Touareg," "TDI," "TSI," "Climatronic," "DSP," and "4MOTION" are registered trademarks of Volkswagen AG. "Carefree Maintenance," the Carefree Maintenance logo and "Side Curtain Protection" are registered trademarks of Volkswagen Group of America, Inc. "FSI" is a trademark of Audi AG. "Dynaudio" is a registered trademark of Continental Audio Electronic GMBH. "Bluetooth" is a registered trademark of Bluetooth SIG, Inc. "Bi-Xenon" is a trademark of Hella, Inc. U.S.A. Eames Molded Plywood Chair, a Herman Miller, Inc., product. Image courtesy of Herman Miller, Inc. Subscriptions to all SiriusXM services are sold separately after 3-month trial expires. SiriusXM Traffic service available in select markets. If you decide to continue your SiriusXM service at the end of your subscription, the plan you choose will automatically renew and bill at then-current rates until you call 1-866-635-2349 to cancel. See SiriusXM Customer Agreement for complete terms at www.siriusxm.com. Sirius U.S. Satellite service available only to those at least 18 years of age in the 48 contiguous U.S.A., D.C. and P.R. (with coverage limitations). Sirius, XM and all related marks and logos are trademarks of Sirius XM Radio Inc. Volkswagen DVD navigation depends on the signals from the worldwide Global Positioning Satellite network. The vehicle's electrical system, and existing wireless and satellite technologies, must be available and operating properly for the system to function. The system is designed to provide you with suggested routes to location addresses, destinations, and other points of interest. Changes in street names, construction zones, traffic flow, points of interest, and other road system changes are beyond the control of Volkswagen of America, Inc. Complete detailed mapping of lanes, roads, streets, toll roads, highways, etc., is not possible, therefore you may encounter discrepancies between the mapping and your actual location. Please rely on your individual judgment in determining whether or not to follow a suggested navigation route. Periodically, the mapping is updated and a new DVD will be required in order to maintain the latest navigation information available to us. These will be available for purchase from time to time at additional cost. Summer performance tires are designed for optimum performance and handling in warm climates. They are not suitable for cold, snowy or icy weather conditions. If you drive under those circumstances, you should equip your vehicle with all-season or winter tires, which offer better traction under those conditions. We suggest you use the recommended winter or all-season tires specified for your car or its equivalent. These high-performance tires also have a lower aspect ratio that aids performance and handling; however, in order to avoid tire, rim or vehicle damage, it is important that the inflation pressure is regularly checked and maintained at recommended levels. Please also remember in making your selection that, while the tires deliver responsive handling, they may ride less comfortably and make more noise than other choices. Finally, these tires may wear more quickly than other choices. For further information on all these topics, please consult the owner's manual, your local dealer or call 1-800-DRIVE-VW. For further information regarding any Volkswagen model, please call 1-800-DRIVE-VW, or just look us up at vw.com. VW12TSBUS

